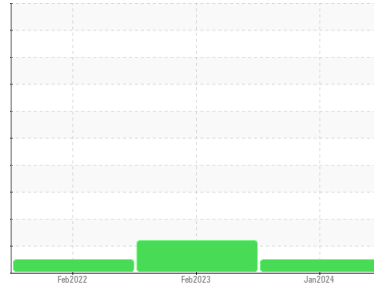




FUEL REPORT

Sample Rating Trend

NORMAL



Machine Id
NYU KIMMEL FARM TANK 1

Component
Diesel Fuel
Fluid

No.2 DIESEL FUEL (ULTRALOW SULPHUR) (25000 GAL)

DIAGNOSIS

Recommendation

All laboratory tests indicate that this sample meets specifications for No.2 ultra-low-sulfur diesel fuel.

Corrosion

All metal levels are normal indicating no corrosion in the system.

Contaminants

There is no bacteria or fungus (yeast and/or mold) indicated in the sample. The water content is negligible. There is no indication of any contamination in the fuel. The amount and size of particulates present in the system are acceptable.

Fuel Condition

Sulfur value derived by ASTM D5453 method for ULSD validation. Sulfur level is acceptable for ULSD specification.

SAMPLE INFORMATION		method	limit/base	current	history1	history2
Sample Number	Client Info			WC06073455	WC05761178	WC05461860
Sample Date	Client Info			29 Jan 2024	07 Feb 2023	07 Feb 2022
Machine Age	hrs	Client Info		0	0	0
Sample Status				NORMAL	ATTENTION	NORMAL

PHYSICAL PROPERTIES		method	limit/base	current	history1	history2
Specific Gravity		*ASTM D1298	0.839	0.840	0.841	0.837
Fuel Color	text	*Visual Screen	Yellow	Red	Red	Orang
ASTM Color	scalar	*ASTM D1500		L4.0	L4.0	L1.5
Visc @ 40°C	cSt	ASTM D445	3.0	2.46	2.59	2.48

SULFUR CONTENT		method	limit/base	current	history1	history2
Sulfur	ppm	ASTM D5185m	10	0	0	12
Sulfur (UVF)	ppm	ASTM D5453		6	7	6

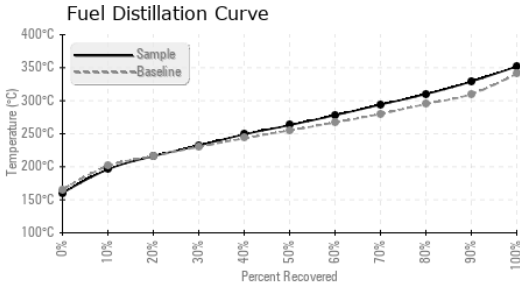
DISTILLATION		method	limit/base	current	history1	history2
Initial Boiling Point	°C	ASTM D86	165	160	161	167
5% Distillation Point	°C	ASTM D86		184	189	192
10% Distill Point	°C	ASTM D86	201	196	201	201
15% Distillation Point	°C	ASTM D86		207	211	208
20% Distill Point	°C	ASTM D86	216	216	220	215
30% Distill Point	°C	ASTM D86	230	232	236	230
40% Distill Point	°C	ASTM D86	243	249	252	245
50% Distill Point	°C	ASTM D86	255	263	267	260
60% Distill Point	°C	ASTM D86	267	278	283	276
70% Distill Point	°C	ASTM D86	280	294	298	293
80% Distill Point	°C	ASTM D86	295	310	314	310
85% Distillation Point	°C	ASTM D86		319	322	319
90% Distill Point	°C	ASTM D86	310	329	331	329
95% Distillation Point	°C	ASTM D86		343	343	342
Final Boiling Point	°C	ASTM D86	341	352	350	352
Distillation Residue	%	ASTM D86	3.0	1.4	1.4	1.4
Distillation Loss	%	ASTM D86	3.0	0.6	0.9	0.5

IGNITION QUALITY		method	limit/base	current	history1	history2
API Gravity		ASTM D7777	37.7	37.0	36.8	37.6
Cetane Index		ASTM D4737	<40.0	48.6	49.1	49.4

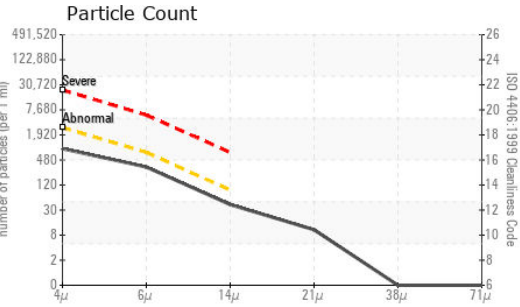
CONTAMINANTS		method	limit/base	current	history1	history2
Silicon	ppm	ASTM D5185m	<1.0	0	0	0
Sodium	ppm	ASTM D5185m	<0.1	0	0	0
Potassium	ppm	ASTM D5185m	<0.1	0	<1	0
Water	%	ASTM D6304	<0.05	0.005	0.003	0.003
ppm Water	ppm	ASTM D6304	<500	55	38.2	37.7
% Gasoline	%	*In-House	<0.50	0.0	0.0	0.0
% Biodiesel	%	*In-House	<20.0	3.8	7.0	5.6



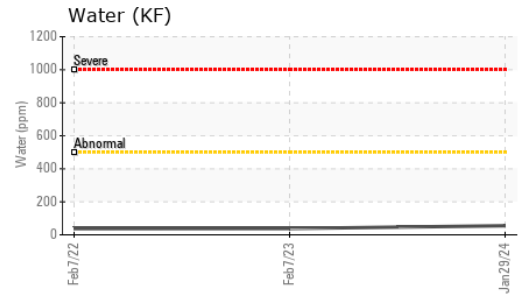
FUEL REPORT



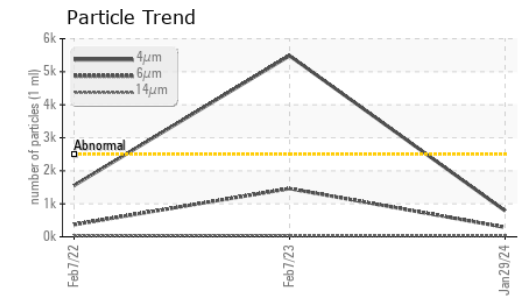
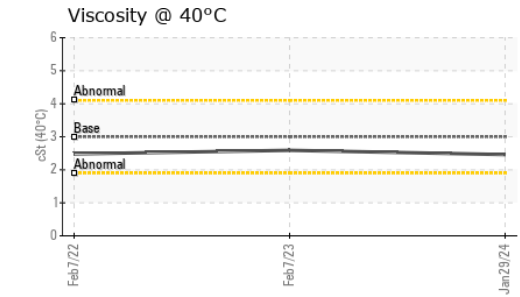
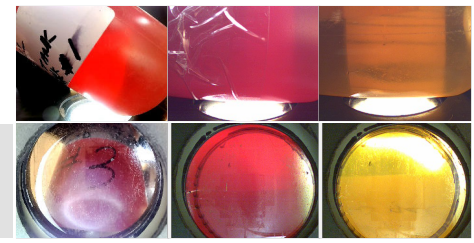
FLUID CLEANLINESS	method	limit/base	current	history1	history2
Particles >4µm	ASTM D7647	>2500	788	▲ 5484	1556
Particles >6µm	ASTM D7647	>640	286	▲ 1460	370
Particles >14µm	ASTM D7647	>80	36	36	28
Particles >21µm	ASTM D7647	>20	9	5	9
Particles >38µm	ASTM D7647	>4	0	1	0
Particles >71µm	ASTM D7647	>3	0	0	0
Oil Cleanliness	ISO 4406 (c)	>18/16/13	17/15/12	▲ 20/18/12	18/16/12



HEAVY METALS	method	limit/base	current	history1	history2
Aluminum	ppm	ASTM D5185m <0.1	0	0	0
Nickel	ppm	ASTM D5185m <0.1	0	0	0
Lead	ppm	ASTM D5185m <0.1	0	0	0
Vanadium	ppm	ASTM D5185m <0.1	0	0	0
Iron	ppm	ASTM D5185m <0.1	0	0	0
Calcium	ppm	ASTM D5185m <0.1	0	0	0
Magnesium	ppm	ASTM D5185m <0.1	0	0	0
Phosphorus	ppm	ASTM D5185m <0.1	0	9	2
Zinc	ppm	ASTM D5185m <0.1	0	0	0



SAMPLE IMAGES	method	limit/base	current	history1	history2
Color					
Bottom					



Laboratory : WearCheck USA - 501 Madison Ave., Cary, NC 27513
Sample No. : WC06073455 **Received** : 30 Jan 2024
Lab Number : **06073455** **Diagnosed** : 06 Feb 2024
Unique Number : 10850132 **Diagnostician** : Doug Bogart
Test Package : DF-1 (Additional Tests: Screen)

ISP FUEL SYSTEMS
 9 CHRIS COURT, SUITE F
 DAYTON, NJ
 US 08810
 Contact: AJ THOMPSON
 aj@ispfuelsystems.com
 T:
 F:

Certificate L2367
 To discuss this sample report, contact Customer Service at 1-800-237-1369.
 * - Denotes test methods that are outside of the ISO 17025 scope of accreditation.
 Statements of conformity to specifications are based on the simple acceptance decision rule (JCGM 106:2012)