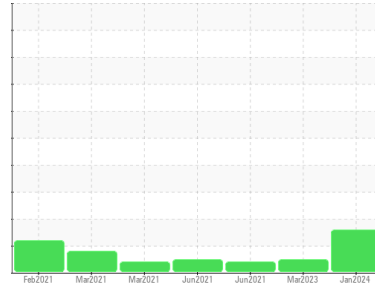




FUEL REPORT

Sample Rating Trend

ISO



Area
GUAY SON/Yavaros [CONHER]
Machine Id
PISA2 diésel tanque almacenamiento

Component
Diesel Fuel
Fluid
Diesel fuel (--- GAL)

DIAGNOSIS

Recommendation

This is a baseline read-out on the submitted sample. We recommend you service the filters on this component.

Corrosion

All metal levels are normal indicating no corrosion in the system.

Contaminants

There is a high amount of particulates present in the fuel. Fuel content negligible.

Fuel Condition

The condition of the fuel is acceptable for the time in service.

SAMPLE INFORMATION		method	limit/base	current	history1	history2
Sample Number	Client Info			KL0013465	KL0011384	KL0006794
Sample Date	Client Info			25 Jan 2024	25 Mar 2023	26 Jun 2021
Machine Age	hrs	Client Info		0	0	0
Sample Status				ABNORMAL	NORMAL	ATTENTION

PHYSICAL PROPERTIES		method	limit/base	current	history1	history2
Visc @ 40°C	cSt	ASTM D445		2.56	2.72	2.18

SULFUR CONTENT		method	limit/base	current	history1	history2
Sulfur	ppm	ASTM D5185m		2	25	10

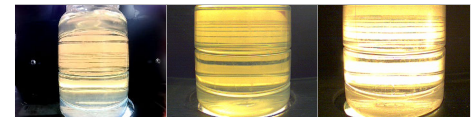
CONTAMINANTS		method	limit/base	current	history1	history2
Silicon	ppm	ASTM D5185m	<1.0	0	<1	<1
Sodium	ppm	ASTM D5185m	<0.1	<1	0	<1
Potassium	ppm	ASTM D5185m	<0.1	2	<1	0
Water	%	ASTM D6304	<0.05	0.006	0.003	---
ppm Water	ppm	ASTM D6304	<500	67	27.5	---

FLUID CLEANLINESS		method	limit/base	current	history1	history2
Particles >4µm		ASTM D7647		10735	1622	4004
Particles >6µm		ASTM D7647	>640	▲ 2047	347	▲ 754
Particles >14µm		ASTM D7647	>80	▲ 92	15	73
Particles >21µm		ASTM D7647	>20	▲ 22	2	21
Particles >38µm		ASTM D7647	>4	0	0	0
Particles >71µm		ASTM D7647	>3	0	0	0
Oil Cleanliness		ISO 4406 (c)	>16/13	▲ 18/14	16/11	▲ 17/13

HEAVY METALS		method	limit/base	current	history1	history2
Aluminum	ppm	ASTM D5185m	<0.1	0	<1	0
Nickel	ppm	ASTM D5185m	<0.1	0	0	0
Lead	ppm	ASTM D5185m	<0.1	0	0	0
Vanadium	ppm	ASTM D5185m	<0.1	0	0	0
Iron	ppm	ASTM D5185m	<0.1	0	0	0
Calcium	ppm	ASTM D5185m	<0.1	0	0	0
Magnesium	ppm	ASTM D5185m	<0.1	0	<1	0
Phosphorus	ppm	ASTM D5185m	<0.1	0	9	0
Zinc	ppm	ASTM D5185m	<0.1	0	0	0

SAMPLE IMAGES		method	limit/base	current	history1	history2
---------------	--	--------	------------	---------	----------	----------

Color

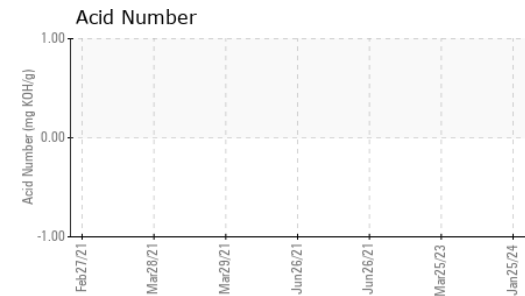
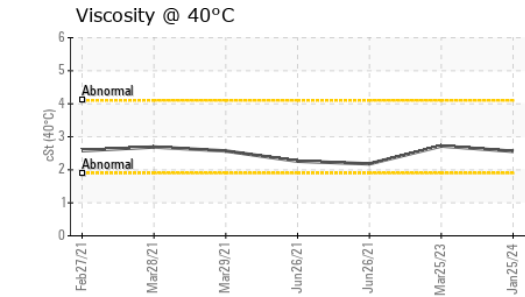
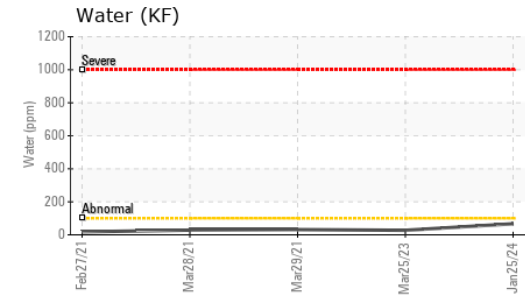
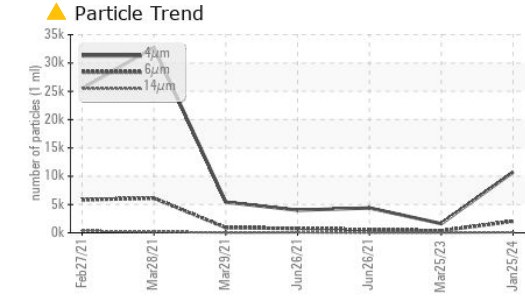
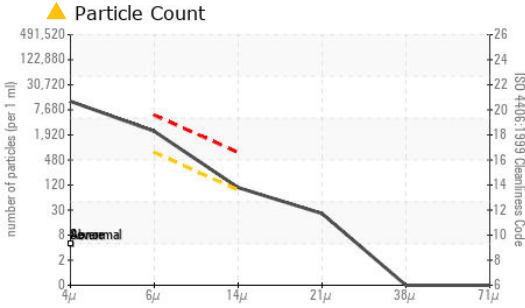


Bottom

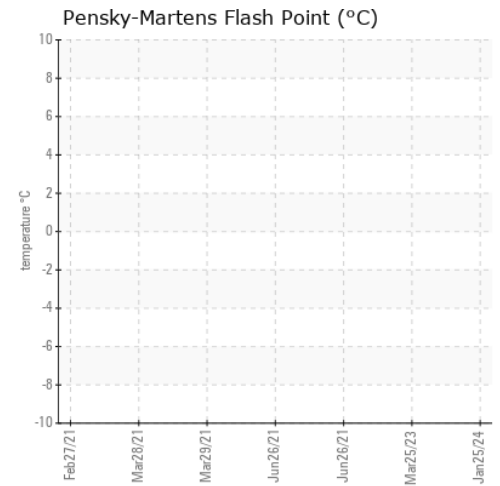




FUEL REPORT



GRAPHS



Certificate L2367

Laboratory : WearCheck USA - 501 Madison Ave., Cary, NC 27513
Sample No. : KL0013465 **Received** : 30 Jan 2024
Lab Number : 06075280 **Diagnosed** : 05 Feb 2024
Unique Number : 10857371 **Diagnostician** : Jonathan Hester
Test Package : MOB 2 (Additional Tests: KF, PrtCount)

To discuss this sample report, contact Customer Service at 1-800-237-1369.

* - Denotes test methods that are outside of the ISO 17025 scope of accreditation.

Statements of conformity to specifications are based on the simple acceptance decision rule (JCGM 106:2012)

CONOR
 JUAREZ 348
 HERMOSILLO,
 MX 83140
 Contact: EDUARDO GARCIA
 egarcia.comsa@gmail.com
 T: (526)622-1581 x:81
 F: x: