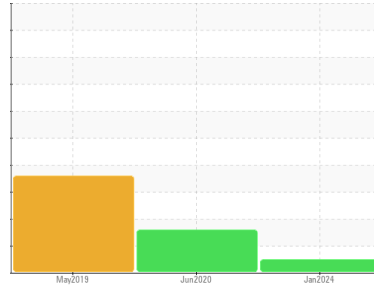




OIL ANALYSIS REPORT

Sample Rating Trend



NORMAL



Area
ULTRA COOLANT 46
 Machine Id
CBV491515 - WELLS PET FOOD
 Component
Compressor

DIAGNOSIS

Recommendation

Resample at the next service interval to monitor.

Wear

All component wear rates are normal.

Contamination

There is no indication of any contamination in the oil.

Fluid Condition

The AN level is acceptable for this fluid. The condition of the oil is suitable for further service.

SAMPLE INFORMATION

	method	limit/base	current	history1	history2
Sample Number	Client Info		UCH06075962	UCH05018506	UCH04886190
Sample Date	Client Info		25 Jan 2024	26 Jun 2020	24 May 2019
Machine Age	hrs	Client Info	27777	19879	13337
Oil Age	hrs	Client Info	4000	2000	6500
Oil Changed	Client Info		N/A	Not Changd	Changed
Sample Status			NORMAL	ATTENTION	SEVERE

CONTAMINATION

	method	limit/base	current	history1	history2
Water	WC Method	>0.1	NEG	NEG	NEG

WEAR METALS

	method	limit/base	current	history1	history2
Iron	ppm	ASTM D5185m >50	0	4	8
Chromium	ppm	ASTM D5185m >10	0	0	0
Nickel	ppm	ASTM D5185m	<1	0	<1
Titanium	ppm	ASTM D5185m	0	0	0
Silver	ppm	ASTM D5185m	0	0	0
Aluminum	ppm	ASTM D5185m >25	1	<1	2
Lead	ppm	ASTM D5185m >25	1	1	<1
Copper	ppm	ASTM D5185m >50	1	4	4
Tin	ppm	ASTM D5185m >15	1	0	0
Antimony	ppm	ASTM D5185m	---	7	<1
Vanadium	ppm	ASTM D5185m	0	0	0
Cadmium	ppm	ASTM D5185m	0	0	0

ADDITIVES

	method	limit/base	current	history1	history2
Boron	ppm	ASTM D5185m 0	0	4	16
Barium	ppm	ASTM D5185m 500	616	221	144
Molybdenum	ppm	ASTM D5185m 0	0	0	<1
Manganese	ppm	ASTM D5185m	<1	1	<1
Magnesium	ppm	ASTM D5185m 0	2	0	<1
Calcium	ppm	ASTM D5185m 0	4	2	4
Phosphorus	ppm	ASTM D5185m 20	3	2	6
Zinc	ppm	ASTM D5185m 0	64	41	6
Sulfur	ppm	ASTM D5185m 200	357	179	241

CONTAMINANTS

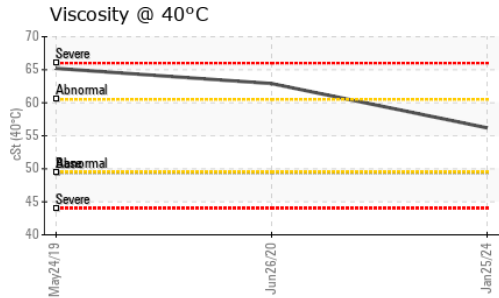
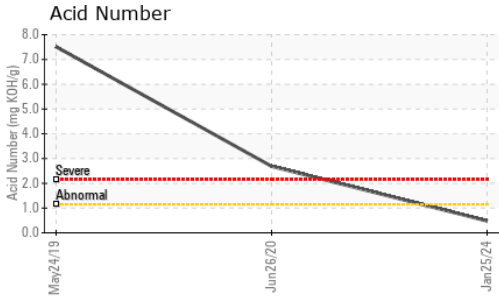
	method	limit/base	current	history1	history2
Silicon	ppm	ASTM D5185m >25	6	2	<1
Sodium	ppm	ASTM D5185m	60	107	65
Potassium	ppm	ASTM D5185m >20	9	10	8

FLUID DEGRADATION

	method	limit/base	current	history1	history2
Acid Number (AN)	mg KOH/g	ASTM D8045	0.48	▲ 2.686	● 7.515



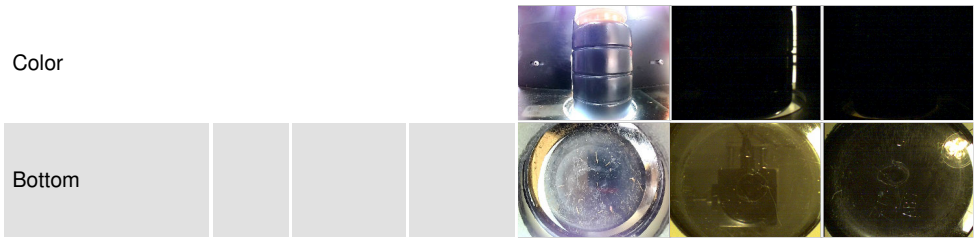
OIL ANALYSIS REPORT



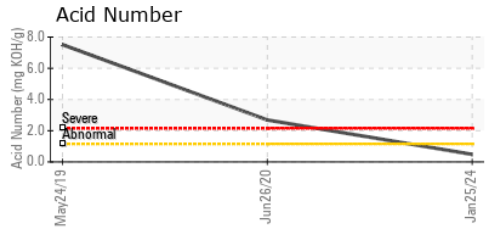
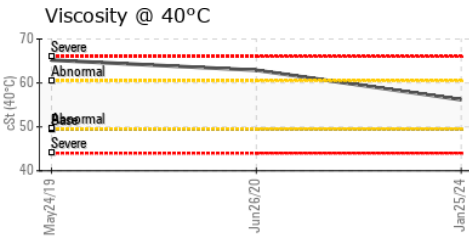
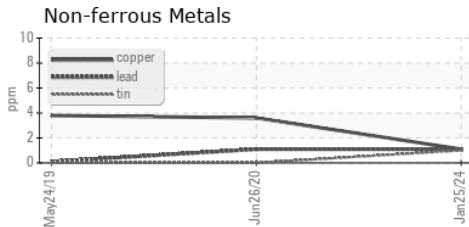
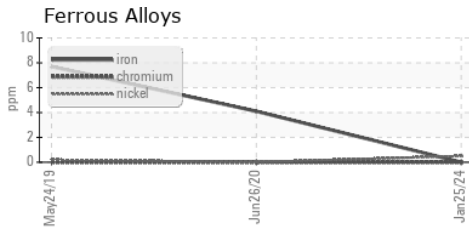
VISUAL	method	limit/base	current	history1	history2
White Metal	scalar	*Visual	NONE	NONE	NONE
Yellow Metal	scalar	*Visual	NONE	VLITE	NONE
Precipitate	scalar	*Visual	NONE	NONE	NONE
Silt	scalar	*Visual	NONE	NONE	NONE
Debris	scalar	*Visual	NONE	VLITE	NONE
Sand/Dirt	scalar	*Visual	NONE	NONE	NONE
Appearance	scalar	*Visual	NORML	NORML	NORML
Odor	scalar	*Visual	NORML	NORML	NORML
Emulsified Water	scalar	*Visual	>0.1	NEG	NEG
Free Water	scalar	*Visual		NEG	NEG

FLUID PROPERTIES	method	limit/base	current	history1	history2
Visc @ 40°C	cSt	ASTM D445	56.2	▲ 62.9	▲ 65.2

SAMPLE IMAGES	method	limit/base	current	history1	history2
---------------	--------	------------	---------	----------	----------



GRAPHS



Certificate L2367

Laboratory : WearCheck USA - 501 Madison Ave., Cary, NC 27513
Sample No. : UCH06075962 **Received** : 31 Jan 2024
Lab Number : 06075962 **Diagnosed** : 02 Feb 2024
Unique Number : 10858053 **Diagnostician** : Don Baldrige
Test Package : IND 2

A-L-L EQUIPMENT INC
 204 38TH ST
 MOLINE, IL
 US 61265
 Contact: KEVIN DESPOT
 kevind@a-l-equipment.com
 T: (815)877-7000
 F: (309)762-9950

To discuss this sample report, contact Customer Service at 1-800-237-1369.

* - Denotes test methods that are outside of the ISO 17025 scope of accreditation.

Statements of conformity to specifications are based on the simple acceptance decision rule (JCGM 106:2012)