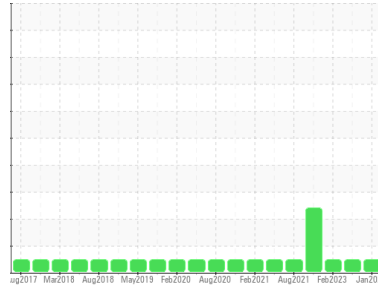




OIL ANALYSIS REPORT

Sample Rating Trend



NORMAL



Area
25
 Machine Id
[25] A25 FAN 2
 Component
Center Gearbox
 Fluid
GEAR LIFE 220 (5 GAL)

DIAGNOSIS

Recommendation

Resample at the next service interval to monitor. (Customer Sample Comment: Gear Life 220)

Wear

All component wear rates are normal.

Contamination

There is no indication of any contamination in the oil.

Fluid Condition

The AN level is acceptable for this fluid. The condition of the oil is suitable for further service.

SAMPLE INFORMATION

| | method | limit/base | current | history1 | history2 |
|---------------|-------------|-------------|--------------------|-------------|-------------|
| Sample Number | Client Info | | HPL0002398 | HPL0003182 | HPL0001854 |
| Sample Date | Client Info | | 30 Jan 2024 | 30 Oct 2023 | 09 Feb 2023 |
| Machine Age | hrs | Client Info | 0 | 0 | 0 |
| Oil Age | hrs | Client Info | 1620 | 0 | 3990 |
| Oil Changed | Client Info | | Not Chngd | Changed | Not Chngd |
| Sample Status | | | NORMAL | NORMAL | NORMAL |

CONTAMINATION

| | method | limit/base | current | history1 | history2 |
|-------|-----------|------------|------------|----------|----------|
| Water | WC Method | >0.2 | NEG | NEG | NEG |

WEAR METALS

| | method | limit/base | current | history1 | history2 |
|----------|--------|------------------|--------------|----------|----------|
| Iron | ppm | ASTM D5185m >200 | 18 | 7 | 27 |
| Chromium | ppm | ASTM D5185m >10 | <1 | 0 | 0 |
| Nickel | ppm | ASTM D5185m >10 | 0 | 0 | 0 |
| Titanium | ppm | ASTM D5185m | <1 | 0 | 0 |
| Silver | ppm | ASTM D5185m | 0 | 0 | 0 |
| Aluminum | ppm | ASTM D5185m >25 | 2 | 0 | <1 |
| Lead | ppm | ASTM D5185m >50 | 0 | 0 | 0 |
| Copper | ppm | ASTM D5185m >200 | 0 | 0 | 0 |
| Tin | ppm | ASTM D5185m >10 | <1 | 0 | 0 |
| Antimony | ppm | ASTM D5185m >5 | --- | --- | --- |
| Vanadium | ppm | ASTM D5185m | <1 | 0 | 0 |
| Cadmium | ppm | ASTM D5185m | 0 | 0 | 0 |

ADDITIVES

| | method | limit/base | current | history1 | history2 |
|------------|--------|-------------|--------------|----------|----------|
| Boron | ppm | ASTM D5185m | 0 | 4 | 0 |
| Barium | ppm | ASTM D5185m | 0 | 0 | 0 |
| Molybdenum | ppm | ASTM D5185m | 0 | 0 | 0 |
| Manganese | ppm | ASTM D5185m | <1 | 0 | <1 |
| Magnesium | ppm | ASTM D5185m | 0 | <1 | <1 |
| Calcium | ppm | ASTM D5185m | 13 | 57 | 25 |
| Phosphorus | ppm | ASTM D5185m | 127 | 121 | 133 |
| Zinc | ppm | ASTM D5185m | 0 | 16 | 0 |
| Sulfur | ppm | ASTM D5185m | 17125 | 17863 | 20170 |

CONTAMINANTS

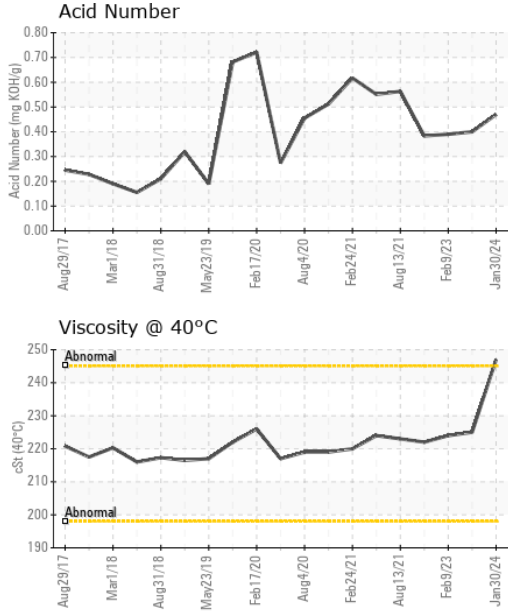
| | method | limit/base | current | history1 | history2 |
|-----------|--------|-----------------|--------------|----------|----------|
| Silicon | ppm | ASTM D5185m >50 | 1 | <1 | 3 |
| Sodium | ppm | ASTM D5185m | 0 | 0 | <1 |
| Potassium | ppm | ASTM D5185m >20 | <1 | 0 | 0 |

FLUID DEGRADATION

| | method | limit/base | current | history1 | history2 |
|------------------|----------|------------|-------------|----------|----------|
| Acid Number (AN) | mg KOH/g | ASTM D8045 | 0.47 | 0.40 | 0.39 |



OIL ANALYSIS REPORT

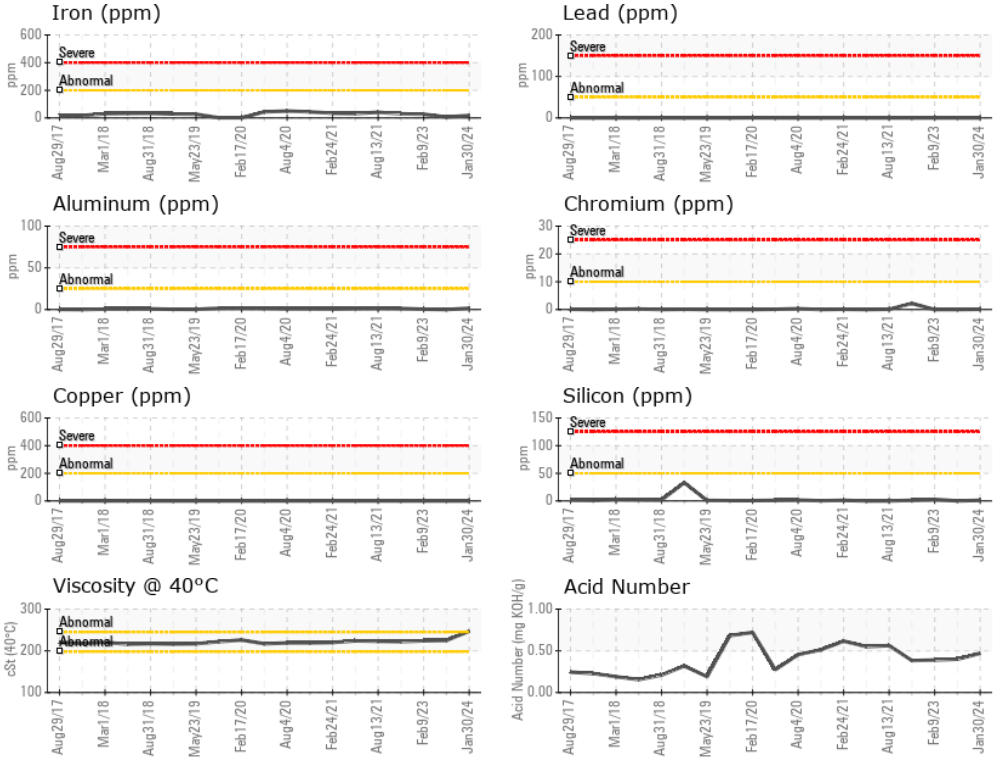


| VISUAL | method | limit/base | current | history1 | history2 |
|------------------|--------|------------|---------|----------|----------|
| White Metal | scalar | *Visual | NONE | MODER | MODER |
| Yellow Metal | scalar | *Visual | NONE | NONE | NONE |
| Precipitate | scalar | *Visual | NONE | NONE | NONE |
| Silt | scalar | *Visual | NONE | MODER | NONE |
| Debris | scalar | *Visual | NONE | LIGHT | NONE |
| Sand/Dirt | scalar | *Visual | NONE | NONE | NONE |
| Appearance | scalar | *Visual | NORML | NORML | NORML |
| Odor | scalar | *Visual | NORML | NORML | NORML |
| Emulsified Water | scalar | *Visual | >0.2 | NEG | 0.2% |
| Free Water | scalar | *Visual | | NEG | NEG |

| FLUID PROPERTIES | method | limit/base | current | history1 | history2 |
|------------------|--------|------------|------------|----------|----------|
| Visc @ 40°C | cSt | ASTM D445 | 247 | 225 | 224 |

| SAMPLE IMAGES | method | limit/base | current | history1 | history2 |
|---------------|--------|------------|---------|----------|----------|
| Color | | | | no image | no image |
| Bottom | | | | no image | no image |

GRAPHS



Certificate L2367

Laboratory : WearCheck USA - 501 Madison Ave., Cary, NC 27513
Sample No. : HPL0002398 **Recieved** : 31 Jan 2024
Lab Number : 06076395 **Diagnosed** : 02 Feb 2024
Unique Number : 10858486 **Diagnostician** : Don Baldrige
Test Package : MOB 2

KENSING
 2525 S KENSINGTON RD
 KANKAKEE, IL
 US 60901

Contact: TIM HUBERT
 timothy.hubert@kensingolutions.com

T: (815)939-8918

F: x:

To discuss this sample report, contact Customer Service at 1-800-237-1369.

* - Denotes test methods that are outside of the ISO 17025 scope of accreditation.

Statements of conformity to specifications are based on the simple acceptance decision rule (JCGM 106:2012)