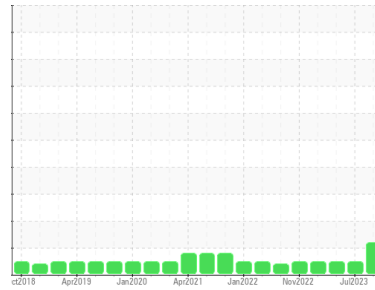


# OIL ANALYSIS REPORT

Sample Rating Trend



**DEGRADATION**



Area  
**DIAMOND BLUE 8K [SVO-56504]**  
 Machine Id  
**SULLAR 201308270008 - DOE RUN - SCRUBBER**  
 Component  
**Compressor**

**DIAGNOSIS**

**▲ Recommendation**

Oil and filter change at the time of sampling has been noted. Resample at the next service interval to monitor.

**Wear**

All component wear rates are normal.

**Contamination**

There is no indication of any contamination in the oil.

**▲ Fluid Condition**

The AN level is at the top-end of the recommended limit.

SAMPLE INFORMATION		method	limit/base	current	history1	history2
Sample Number	Client Info			<b>UCH06097854</b>	UCH05917683	UCH05842239
Sample Date	Client Info			<b>08 Feb 2024</b>	18 Jul 2023	01 May 2023
Machine Age	hrs	Client Info		<b>83995</b>	79077	77222
Oil Age	hrs	Client Info		<b>0</b>	2000	2000
Oil Changed	Client Info			<b>Changed</b>	Not Changd	Not Changd
Sample Status				<b>ATTENTION</b>	NORMAL	NORMAL

CONTAMINATION		method	limit/base	current	history1	history2
Water	WC Method		>0.1	<b>NEG</b>	NEG	NEG

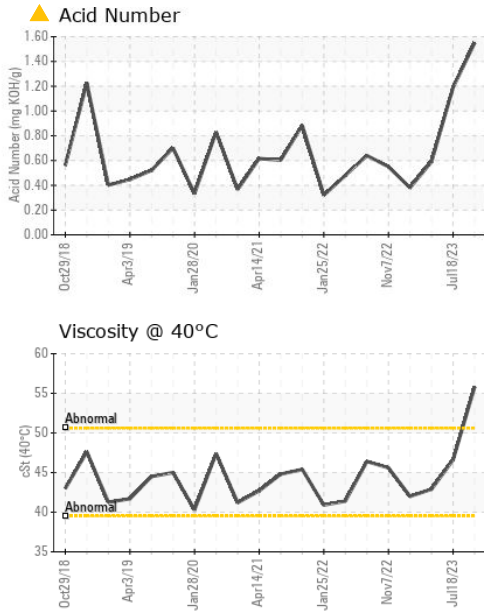
WEAR METALS		method	limit/base	current	history1	history2
Iron	ppm	ASTM D5185m	>50	<b>&lt;1</b>	1	2
Chromium	ppm	ASTM D5185m	>10	<b>&lt;1</b>	0	<1
Nickel	ppm	ASTM D5185m		<b>&lt;1</b>	0	<1
Titanium	ppm	ASTM D5185m		<b>&lt;1</b>	<1	<1
Silver	ppm	ASTM D5185m		<b>&lt;1</b>	0	<1
Aluminum	ppm	ASTM D5185m	>25	<b>&lt;1</b>	0	0
Lead	ppm	ASTM D5185m	>25	<b>1</b>	11	10
Copper	ppm	ASTM D5185m	>50	<b>2</b>	3	4
Tin	ppm	ASTM D5185m	>15	<b>1</b>	<1	<1
Vanadium	ppm	ASTM D5185m		<b>&lt;1</b>	<1	<1
Cadmium	ppm	ASTM D5185m		<b>&lt;1</b>	<1	<1

ADDITIVES		method	limit/base	current	history1	history2
Boron	ppm	ASTM D5185m		<b>0</b>	0	0
Barium	ppm	ASTM D5185m		<b>22</b>	366	602
Molybdenum	ppm	ASTM D5185m		<b>&lt;1</b>	0	<1
Manganese	ppm	ASTM D5185m		<b>&lt;1</b>	<1	1
Magnesium	ppm	ASTM D5185m		<b>0</b>	0	11
Calcium	ppm	ASTM D5185m		<b>&lt;1</b>	4	11
Phosphorus	ppm	ASTM D5185m		<b>0</b>	0	3
Zinc	ppm	ASTM D5185m		<b>3</b>	0	0
Sulfur	ppm	ASTM D5185m		<b>263</b>	387	425

CONTAMINANTS		method	limit/base	current	history1	history2
Silicon	ppm	ASTM D5185m	>25	<b>&lt;1</b>	<1	2
Sodium	ppm	ASTM D5185m		<b>2</b>	57	68
Potassium	ppm	ASTM D5185m	>20	<b>1</b>	7	11

FLUID DEGRADATION		method	limit/base	current	history1	history2
Acid Number (AN)	mg KOH/g	ASTM D8045		<b>▲ 1.55</b>	1.19	0.59

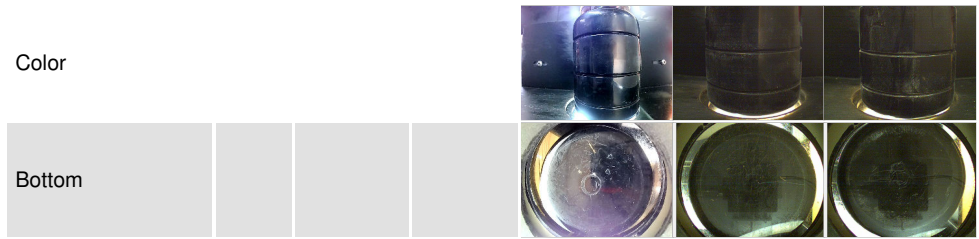
# OIL ANALYSIS REPORT



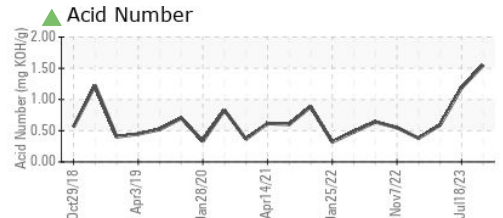
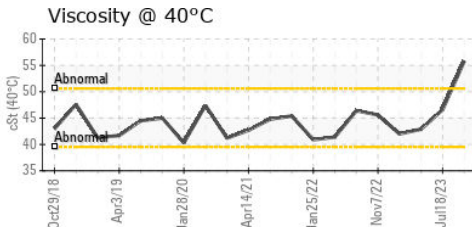
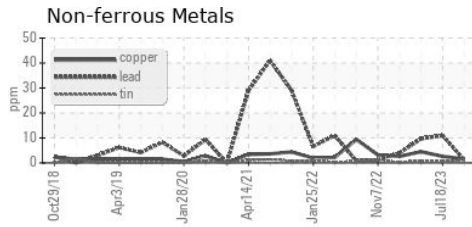
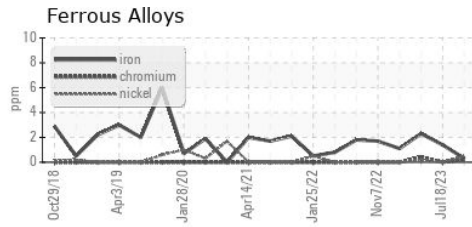
VISUAL	method	limit/base	current	history1	history2
White Metal	scalar	*Visual	NONE	NONE	NONE
Yellow Metal	scalar	*Visual	NONE	NONE	NONE
Precipitate	scalar	*Visual	NONE	NONE	NONE
Silt	scalar	*Visual	NONE	NONE	NONE
Debris	scalar	*Visual	NONE	NONE	NONE
Sand/Dirt	scalar	*Visual	NONE	NONE	NONE
Appearance	scalar	*Visual	NORML	NORML	NORML
Odor	scalar	*Visual	NORML	NORML	NORML
Emulsified Water	scalar	*Visual	>0.1	NEG	NEG
Free Water	scalar	*Visual		NEG	NEG

FLUID PROPERTIES	method	limit/base	current	history1	history2
Visc @ 40°C	cSt	ASTM D445	55.8	46.6	42.9

SAMPLE IMAGES	method	limit/base	current	history1	history2
---------------	--------	------------	---------	----------	----------



## GRAPHS



Certificate L2367

**Laboratory** : WearCheck USA - 501 Madison Ave., Cary, NC 27513  
**Sample No.** : UCH06097854  
**Lab Number** : 06097854  
**Unique Number** : 10896084  
**Test Package** : IND 2

**Received** : 22 Feb 2024  
**Tested** : 23 Feb 2024  
**Diagnosed** : 25 Feb 2024 - Don Baldrige

**JOHN HENRY FOSTER COMPANY**  
 4700 LEBOURGET STREET  
 SAINT LOUIS, MO  
 US 63134  
 Contact: RACHEL VON HATTEN  
 rvonhatten@jhfc.com  
 T: (314)593-1267  
 F: (314)874-0965

To discuss this sample report, contact Customer Service at 1-800-237-1369.

\* - Denotes test methods that are outside of the ISO 17025 scope of accreditation.

Statements of conformity to specifications are based on the simple acceptance decision rule (JCGM 106:2012)