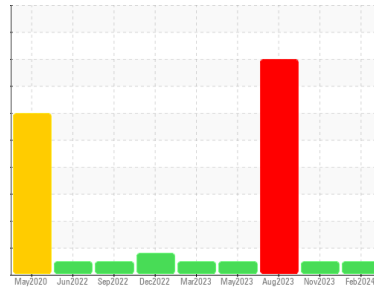




OIL ANALYSIS REPORT

Sample Rating Trend



NORMAL



Machine Id
CALE_U2 CALE_U2_P2
 Component
Non-Drive End Pump
 Fluid
SHELL TELLUS 32 (--- GAL)

DIAGNOSIS

Recommendation

Resample at the next service interval to monitor.

Wear

All component wear rates are normal.

Contamination

The water content is negligible. There is no indication of any contamination in the oil.

Fluid Condition

The AN level is acceptable for this fluid. The condition of the oil is suitable for further service.

SAMPLE INFORMATION

	method	limit/base	current	history1	history2
Sample Number	Client Info		RP0036998	RP0032729	RP0027207
Sample Date	Client Info		15 Feb 2024	21 Nov 2023	03 Aug 2023
Machine Age	hrs	Client Info	0	0	0
Oil Age	hrs	Client Info	0	0	0
Oil Changed	Client Info		N/A	N/A	N/A
Sample Status			NORMAL	NORMAL	SEVERE

WEAR METALS

	method	limit/base	current	history1	history2
Iron	ppm	ASTM D5185m >90	23	32	41
Chromium	ppm	ASTM D5185m >5	0	<1	<1
Nickel	ppm	ASTM D5185m >5	0	<1	0
Titanium	ppm	ASTM D5185m >3	0	<1	0
Silver	ppm	ASTM D5185m >3	0	0	0
Aluminum	ppm	ASTM D5185m >7	<1	<1	0
Lead	ppm	ASTM D5185m >12	<1	1	<1
Copper	ppm	ASTM D5185m >30	<1	2	2
Tin	ppm	ASTM D5185m >9	<1	<1	1
Vanadium	ppm	ASTM D5185m	0	0	0
Cadmium	ppm	ASTM D5185m	0	<1	0

ADDITIVES

	method	limit/base	current	history1	history2
Boron	ppm	ASTM D5185m	0	0	0
Barium	ppm	ASTM D5185m	0	<1	1
Molybdenum	ppm	ASTM D5185m	0	<1	0
Manganese	ppm	ASTM D5185m	<1	<1	0
Magnesium	ppm	ASTM D5185m 11	68	75	65
Calcium	ppm	ASTM D5185m 35	13	13	13
Phosphorus	ppm	ASTM D5185m 259	297	327	280
Zinc	ppm	ASTM D5185m 277	351	369	363

CONTAMINANTS

	method	limit/base	current	history1	history2
Silicon	ppm	ASTM D5185m >60	2	3	2
Sodium	ppm	ASTM D5185m	<1	0	2
Potassium	ppm	ASTM D5185m >20	<1	1	0
Water	%	ASTM D6304 >.1	0.004	0.007	▲ 0.314
ppm Water	ppm	ASTM D6304 >1000	41	75	▲ 3140

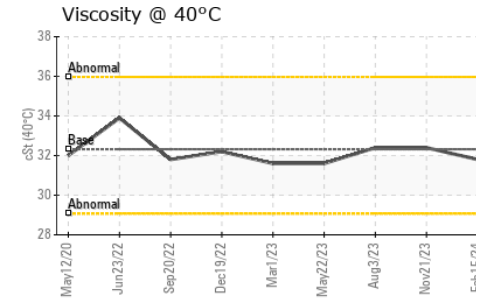
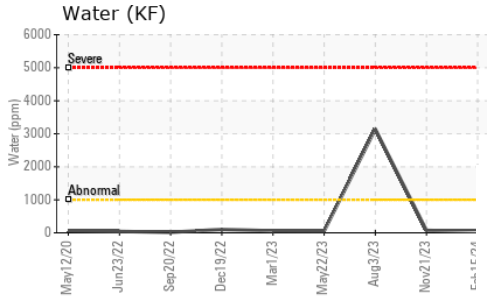
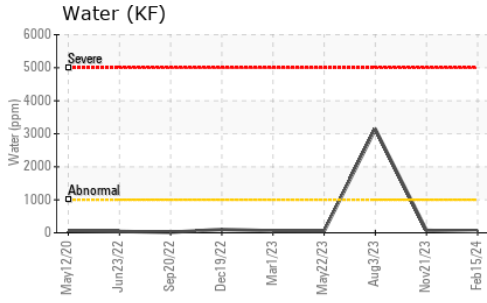
FLUID DEGRADATION

	method	limit/base	current	history1	history2
Acid Number (AN)	mg KOH/g	ASTM D8045 0.32	0.34	0.34	0.42

VISUAL

	method	limit/base	current	history1	history2
White Metal	scalar	*Visual NONE	NONE	LIGHT	NONE
Yellow Metal	scalar	*Visual NONE	NONE	NONE	NONE
Precipitate	scalar	*Visual NONE	NONE	NONE	NONE
Silt	scalar	*Visual NONE	NONE	NONE	▲ MODER
Debris	scalar	*Visual NONE	NONE	LIGHT	NONE
Sand/Dirt	scalar	*Visual NONE	NONE	NONE	NONE
Appearance	scalar	*Visual NORML	NORML	NORML	▲ HAZY
Odor	scalar	*Visual NORML	NORML	NORML	NORML
Emulsified Water	scalar	*Visual >.1	NEG	NEG	▲ 0.2%
Free Water	scalar	*Visual	NEG	NEG	▲ 0.2%

OIL ANALYSIS REPORT



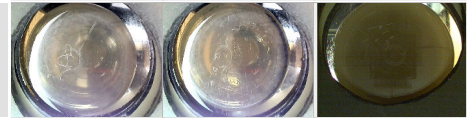
FLUID PROPERTIES		method	limit/base	current	history1	history2
Visc @ 40°C	cSt	ASTM D445	32.32	31.8	32.4	32.4

SAMPLE IMAGES		method	limit/base	current	history1	history2
---------------	--	--------	------------	---------	----------	----------

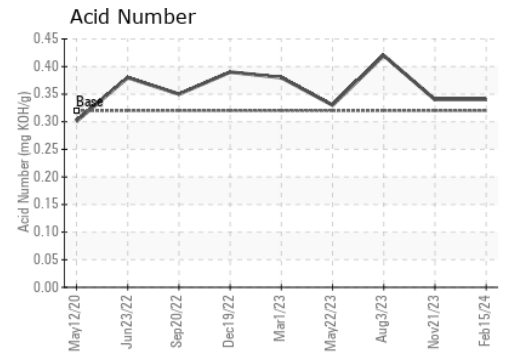
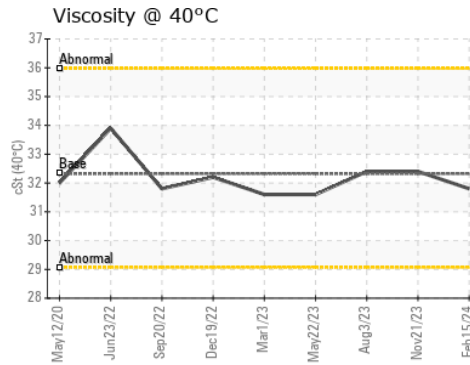
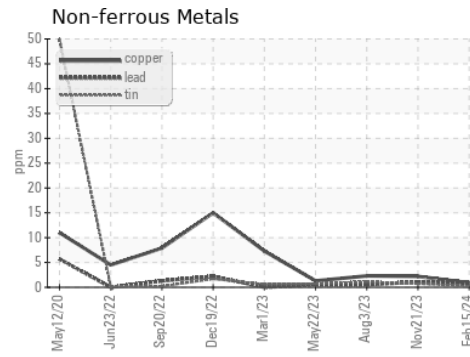
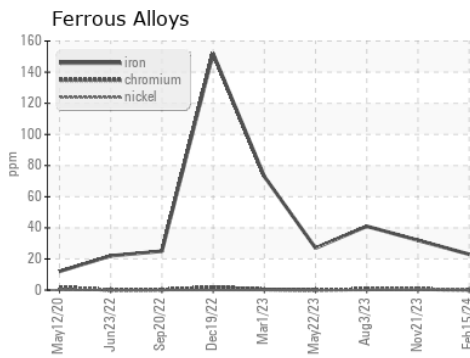
Color



Bottom



GRAPHS



Certificate L2367

Laboratory : WearCheck USA - 501 Madison Ave., Cary, NC 27513
Sample No. : RP0036998
Lab Number : 06099240
Unique Number : 10897470
Test Package : IND 2

Received : 23 Feb 2024
Tested : 27 Feb 2024
Diagnosed : 27 Feb 2024 - Don Baldrige

ENERGY TRANSFER - CALEDONIA
 3591 COLD SPRING ROAD
 CALEDONIA, NY
 US 14423
 Contact: JERRY HIGGINS

To discuss this sample report, contact Customer Service at 1-800-237-1369.

* - Denotes test methods that are outside of the ISO 17025 scope of accreditation.

Statements of conformity to specifications are based on the simple acceptance decision rule (JCGM 106:2012)

T: (610)858-3838

F: