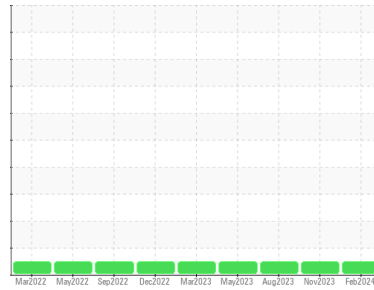




# OIL ANALYSIS REPORT

Sample Rating Trend

**NORMAL**



Machine Id  
**CRNG\_U1 CRNG\_U1\_P1**

Component  
**Non-Drive End Pump**

Fluid  
**SHELL TELLUS 32 (--- GAL)**

## DIAGNOSIS

### Recommendation

Resample at the next service interval to monitor.

### Wear

All component wear rates are normal.

### Contamination

The water content is negligible. There is no indication of any contamination in the oil.

### Fluid Condition

The AN level is acceptable for this fluid. The condition of the oil is suitable for further service.

SAMPLE INFORMATION		method	limit/base	current	history1	history2
Sample Number	Client Info			<b>RP0032742</b>	RP0027367	RP0027197
Sample Date	Client Info			<b>15 Feb 2024</b>	14 Nov 2023	03 Aug 2023
Machine Age	hrs	Client Info		<b>0</b>	0	0
Oil Age	hrs	Client Info		<b>0</b>	0	0
Oil Changed	Client Info			<b>N/A</b>	N/A	N/A
Sample Status				<b>NORMAL</b>	NORMAL	NORMAL

WEAR METALS		method	limit/base	current	history1	history2
Iron	ppm	ASTM D5185m	>90	<b>2</b>	3	1
Chromium	ppm	ASTM D5185m	>5	<b>&lt;1</b>	<1	0
Nickel	ppm	ASTM D5185m	>5	<b>&lt;1</b>	<1	0
Titanium	ppm	ASTM D5185m	>3	<b>&lt;1</b>	<1	0
Silver	ppm	ASTM D5185m	>3	<b>&lt;1</b>	0	0
Aluminum	ppm	ASTM D5185m	>7	<b>&lt;1</b>	<1	0
Lead	ppm	ASTM D5185m	>12	<b>&lt;1</b>	<1	<1
Copper	ppm	ASTM D5185m	>30	<b>2</b>	1	3
Tin	ppm	ASTM D5185m	>9	<b>&lt;1</b>	<1	0
Vanadium	ppm	ASTM D5185m		<b>0</b>	0	0
Cadmium	ppm	ASTM D5185m		<b>&lt;1</b>	<1	0

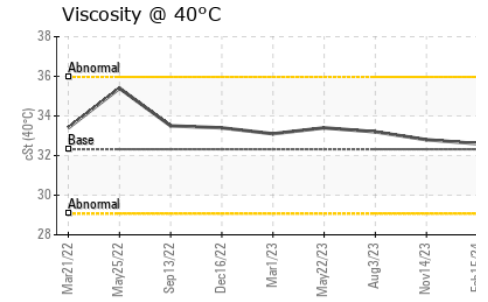
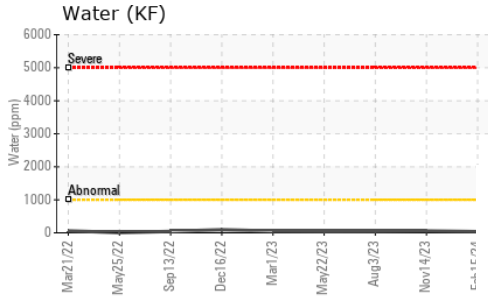
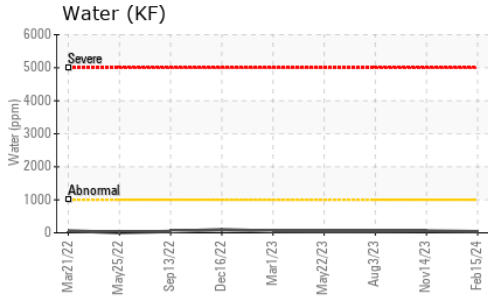
ADDITIVES		method	limit/base	current	history1	history2
Boron	ppm	ASTM D5185m		<b>1</b>	0	0
Barium	ppm	ASTM D5185m		<b>5</b>	<1	1
Molybdenum	ppm	ASTM D5185m		<b>&lt;1</b>	<1	<1
Manganese	ppm	ASTM D5185m		<b>&lt;1</b>	<1	0
Magnesium	ppm	ASTM D5185m	11	<b>55</b>	62	7
Calcium	ppm	ASTM D5185m	35	<b>20</b>	17	44
Phosphorus	ppm	ASTM D5185m	259	<b>220</b>	284	287
Zinc	ppm	ASTM D5185m	277	<b>343</b>	329	368

CONTAMINANTS		method	limit/base	current	history1	history2
Silicon	ppm	ASTM D5185m	>60	<b>&lt;1</b>	<1	<1
Sodium	ppm	ASTM D5185m		<b>0</b>	0	2
Potassium	ppm	ASTM D5185m	>20	<b>&lt;1</b>	<1	<1
Water	%	ASTM D6304	>.1	<b>0.003</b>	0.005	0.004
ppm Water	ppm	ASTM D6304	>1000	<b>35</b>	60	45.2

FLUID DEGRADATION		method	limit/base	current	history1	history2
Acid Number (AN)	mg KOH/g	ASTM D8045	0.32	<b>0.35</b>	0.33	0.36

VISUAL		method	limit/base	current	history1	history2
White Metal	scalar	*Visual	NONE	<b>NONE</b>	NONE	NONE
Yellow Metal	scalar	*Visual	NONE	<b>NONE</b>	NONE	NONE
Precipitate	scalar	*Visual	NONE	<b>NONE</b>	NONE	NONE
Silt	scalar	*Visual	NONE	<b>NONE</b>	NONE	NONE
Debris	scalar	*Visual	NONE	<b>NONE</b>	NONE	NONE
Sand/Dirt	scalar	*Visual	NONE	<b>NONE</b>	NONE	NONE
Appearance	scalar	*Visual	NORML	<b>NORML</b>	NORML	NORML
Odor	scalar	*Visual	NORML	<b>NORML</b>	NORML	NORML
Emulsified Water	scalar	*Visual	>.1	<b>NEG</b>	NEG	NEG
Free Water	scalar	*Visual		<b>NEG</b>	NEG	NEG

# OIL ANALYSIS REPORT



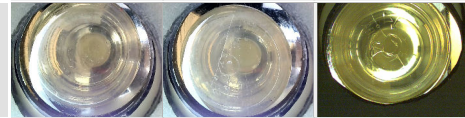
FLUID PROPERTIES		method	limit/base	current	history1	history2
Visc @ 40°C	cSt	ASTM D445	32.32	<b>32.6</b>	32.8	33.2

SAMPLE IMAGES		method	limit/base	current	history1	history2
---------------	--	--------	------------	---------	----------	----------

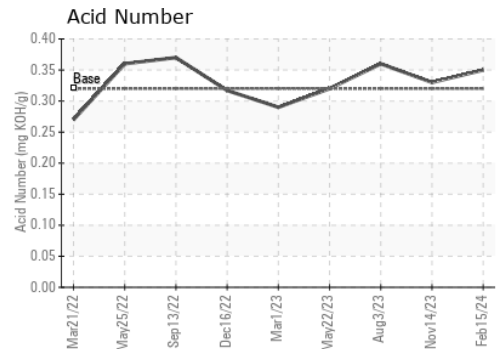
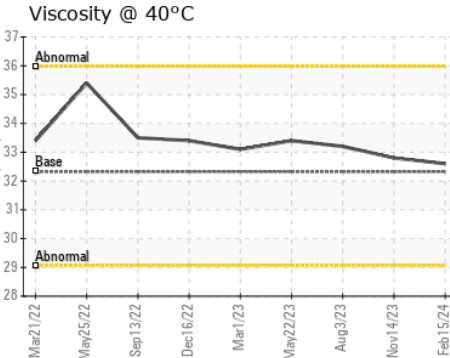
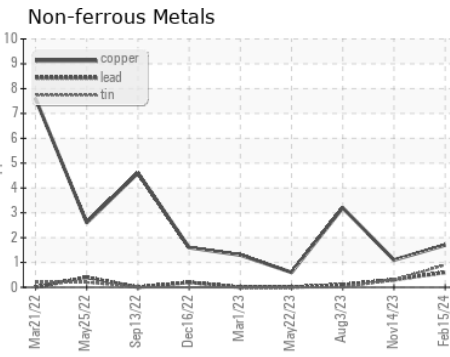
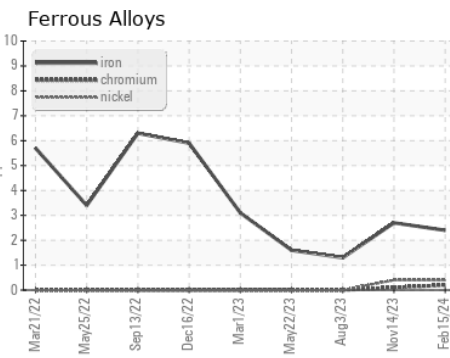
Color



Bottom



## GRAPHS



Certificate L2367

**Laboratory** : WearCheck USA - 501 Madison Ave., Cary, NC 27513  
**Sample No.** : RP0032742  
**Lab Number** : 06099245  
**Unique Number** : 10897475  
**Test Package** : IND 2  
**Received** : 23 Feb 2024  
**Tested** : 27 Feb 2024  
**Diagnosed** : 27 Feb 2024 - Don Baldrige

**ENERGY TRANSFER - CORNING**  
 3346 GORTON ROAD  
 CORNING, NY  
 US 14830  
 Contact: NICHOLAS PUCCI  
 NICHOLAS.PUCCI@ENERGYTRANSFER.COM  
 T: (610)858-3838  
 F:

To discuss this sample report, contact Customer Service at 1-800-237-1369.

\* - Denotes test methods that are outside of the ISO 17025 scope of accreditation.

Statements of conformity to specifications are based on the simple acceptance decision rule (JCGM 106:2012)