



FUEL REPORT

Sample Rating Trend

NORMAL



Machine Id
KIOTI CK2610 PL95A0577

Component
Diesel Fuel
Fluid
{not provided} (--- GAL)

DIAGNOSIS

Recommendation

No corrective action is recommended at this time. All laboratory tests indicate that this sample meets specifications for No.2 ultra-low-sulfur diesel fuel.

Corrosion

All metal levels are normal indicating no corrosion in the system.

Contaminants

There is a light amount of silt (particulates < 6 microns in size) present in the fuel. The water content is negligible. There is no bacteria or fungus (yeast and/or mold) present in the sample.

Fuel Condition

Sulfur value derived by ASTM D5453 method for ULSD validation. Sulfur level is acceptable for ULSD specification.

SAMPLE INFORMATION		method	limit/base	current	history1	history2
Sample Number	Client Info			KT0000944	---	---
Sample Date	Client Info			20 Feb 2024	---	---
Machine Age	hrs	Client Info		143	---	---
Sample Status				NORMAL	---	---

PHYSICAL PROPERTIES		method	limit/base	current	history1	history2
Specific Gravity		*ASTM D1298		0.836	---	---
Fuel Color	text	*Visual Screen		Yellow	---	---
ASTM Color	scalar	*ASTM D1500		L3.0	---	---
Visc @ 40°C	cSt	ASTM D445		2.29	---	---
Pensky-Martens Flash Point	°C	*PMCC Calculated		58	---	---

SULFUR CONTENT		method	limit/base	current	history1	history2
Sulfur	ppm	ASTM D5185m		0	---	---
Sulfur (UVF)	ppm	ASTM D5453		8	---	---

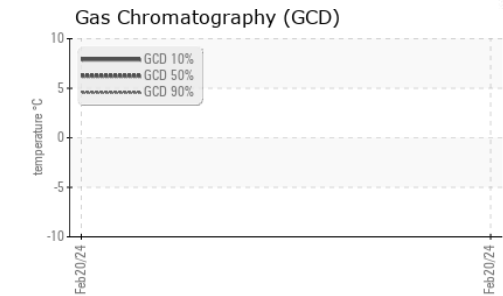
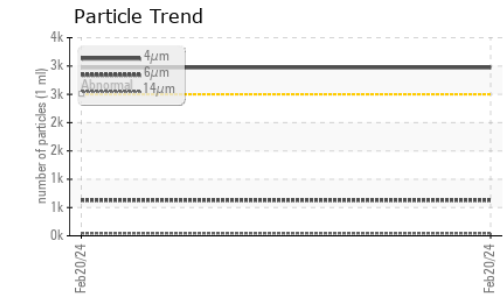
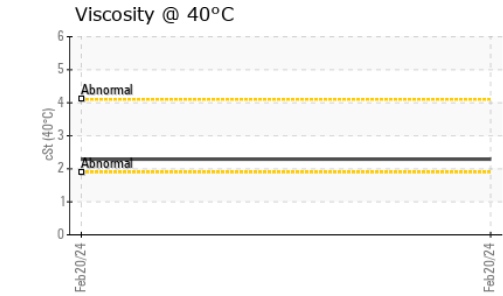
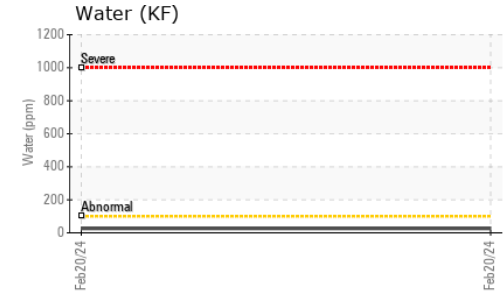
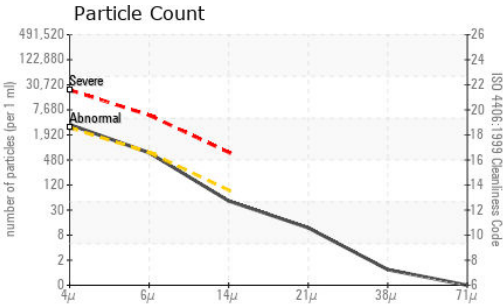
DISTILLATION		method	limit/base	current	history1	history2
Initial Boiling Point	°C	ASTM D86		162	---	---
5% Distillation Point	°C	ASTM D86		186	---	---
10% Distill Point	°C	ASTM D86		196	---	---
15% Distillation Point	°C	ASTM D86		204	---	---
20% Distill Point	°C	ASTM D86		212	---	---
30% Distill Point	°C	ASTM D86		226	---	---
40% Distill Point	°C	ASTM D86		241	---	---
50% Distill Point	°C	ASTM D86		254	---	---
60% Distill Point	°C	ASTM D86		269	---	---
70% Distill Point	°C	ASTM D86		284	---	---
80% Distill Point	°C	ASTM D86		302	---	---
85% Distillation Point	°C	ASTM D86		312	---	---
90% Distill Point	°C	ASTM D86		324	---	---
95% Distillation Point	°C	ASTM D86		342	---	---
Final Boiling Point	°C	ASTM D86		352	---	---
Distillation Residue	%	ASTM D86		1.4	---	---
Distillation Loss	%	ASTM D86		0.6	---	---

IGNITION QUALITY		method	limit/base	current	history1	history2
API Gravity		ASTM D7777		37.8	---	---
Cetane Index		ASTM D4737	<40.0	48.5	---	---

CONTAMINANTS		method	limit/base	current	history1	history2
Silicon	ppm	ASTM D5185m	<1.0	0	---	---
Sodium	ppm	ASTM D5185m	<0.1	1	---	---
Potassium	ppm	ASTM D5185m	<0.1	0	---	---
Water	%	ASTM D6304	<0.05	0.003	---	---
ppm Water	ppm	ASTM D6304	<500	26	---	---
% Gasoline	%	*In-House	<0.50	0.0	---	---
% Biodiesel	%	*In-House	<20.0	0.0	---	---

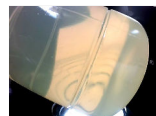



FUEL REPORT

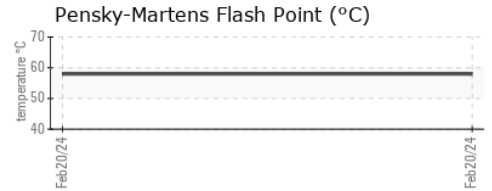
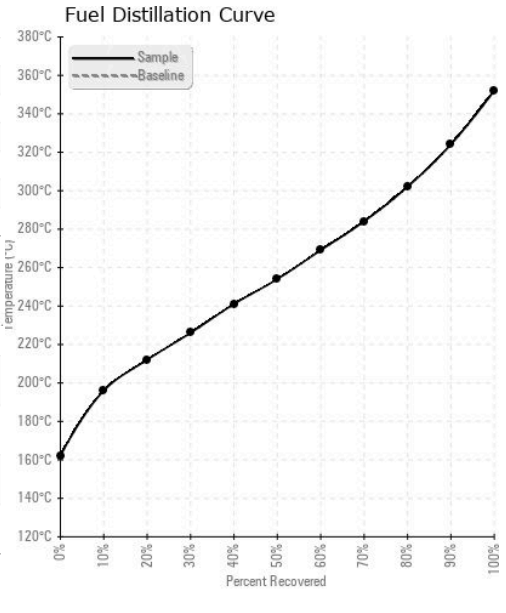


FLUID CLEANLINESS	method	limit/base	current	history1	history2
Particles >4µm	ASTM D7647	>2500	2972	---	---
Particles >6µm	ASTM D7647	>640	629	---	---
Particles >14µm	ASTM D7647	>80	44	---	---
Particles >21µm	ASTM D7647	>20	10	---	---
Particles >38µm	ASTM D7647	>4	1	---	---
Particles >71µm	ASTM D7647	>3	0	---	---
Oil Cleanliness	ISO 4406 (c)	>18/16/13	19/16/13	---	---

HEAVY METALS	method	limit/base	current	history1	history2
Aluminum	ppm	ASTM D5185m <0.1	0	---	---
Nickel	ppm	ASTM D5185m <0.1	0	---	---
Lead	ppm	ASTM D5185m <0.1	0	---	---
Vanadium	ppm	ASTM D5185m <0.1	0	---	---
Iron	ppm	ASTM D5185m <0.1	0	---	---
Calcium	ppm	ASTM D5185m <0.1	0	---	---
Magnesium	ppm	ASTM D5185m <0.1	0	---	---
Phosphorus	ppm	ASTM D5185m <0.1	0	---	---
Zinc	ppm	ASTM D5185m <0.1	0	---	---

SAMPLE IMAGES	method	limit/base	current	history1	history2
Color				no image	no image
Bottom				no image	no image

GRAPHS



Laboratory : WearCheck USA - 501 Madison Ave., Cary, NC 27513
Sample No. : KT0000944 **Received** : 23 Feb 2024
Lab Number : 06099546 **Tested** : 01 Mar 2024
Unique Number : 10897776 **Diagnosed** : 01 Mar 2024 - Doug Bogart
Test Package : DF-2 (Additional Tests: Screen)

STEC EQUIPMENT
 405 MCGEE RD
 ANDERSON, SC
 US 29625
 Contact: SERVICE MANAGER
 hs@stecequipment.com
 T: (864)225-3666
 F:

Certificate L2367
 To discuss this sample report, contact Customer Service at 1-800-237-1369.
 * - Denotes test methods that are outside of the ISO 17025 scope of accreditation.
 Statements of conformity to specifications are based on the simple acceptance decision rule (JCGM 106:2012)