



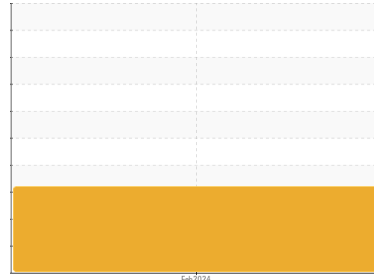
OIL ANALYSIS REPORT

Sample Rating Trend

WATER



Area
[179127-N2STV4W]
 Machine Id
FORKLIFT A390V19048X
 Component
Hydraulic System
 Fluid
SHELL TELLUS PREMIUM 46 (46 QTS)



DIAGNOSIS

SAMPLE INFORMATION		method	limit/base	current	history1	history2
Sample Number	Client Info			PH06100113	---	---
Sample Date	Client Info			20 Feb 2024	---	---
Machine Age	hrs	Client Info		0	---	---
Oil Age	hrs	Client Info		7	---	---
Oil Changed	Client Info			N/A	---	---
Sample Status				ABNORMAL	---	---

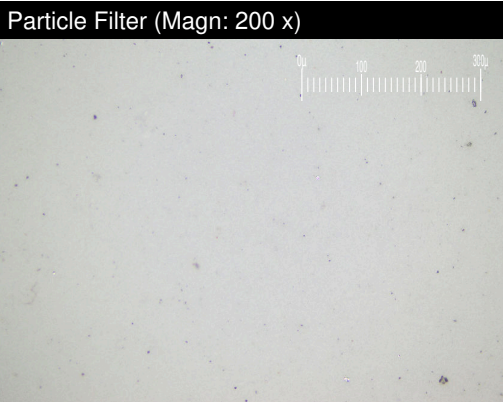
WEAR METALS		method	limit/base	current	history1	history2
Iron	ppm	ASTM D5185m	>20	0	---	---
Chromium	ppm	ASTM D5185m	>20	0	---	---
Nickel	ppm	ASTM D5185m	>20	0	---	---
Titanium	ppm	ASTM D5185m		0	---	---
Silver	ppm	ASTM D5185m		0	---	---
Aluminum	ppm	ASTM D5185m	>20	0	---	---
Lead	ppm	ASTM D5185m	>20	0	---	---
Copper	ppm	ASTM D5185m	>20	1	---	---
Tin	ppm	ASTM D5185m	>20	0	---	---
Vanadium	ppm	ASTM D5185m		0	---	---
Cadmium	ppm	ASTM D5185m		0	---	---

ADDITIVES		method	limit/base	current	history1	history2
Boron	ppm	ASTM D5185m		0	---	---
Barium	ppm	ASTM D5185m		0	---	---
Molybdenum	ppm	ASTM D5185m		0	---	---
Manganese	ppm	ASTM D5185m		0	---	---
Magnesium	ppm	ASTM D5185m		49	---	---
Calcium	ppm	ASTM D5185m		10	---	---
Phosphorus	ppm	ASTM D5185m		251	---	---
Zinc	ppm	ASTM D5185m		291	---	---
Sulfur	ppm	ASTM D5185m		615	---	---

CONTAMINANTS		method	limit/base	current	history1	history2
Silicon	ppm	ASTM D5185m	>15	<1	---	---
Sodium	ppm	ASTM D5185m		4	---	---
Potassium	ppm	ASTM D5185m	>20	0	---	---
Water	%	ASTM D6304	>0.05	▲ 0.130	---	---
ppm Water	ppm	ASTM D6304	>500	▲ 1300	---	---

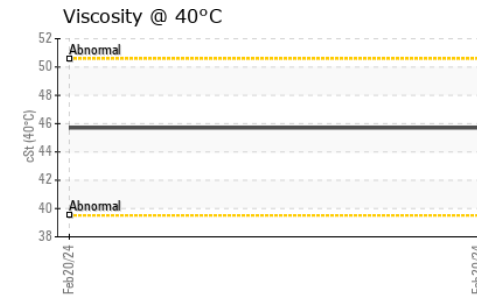
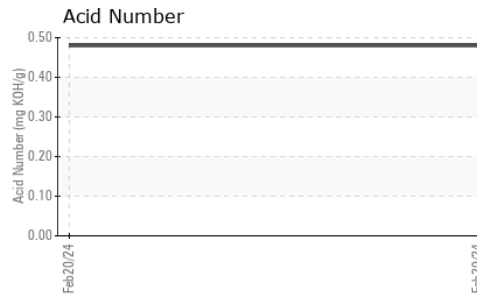
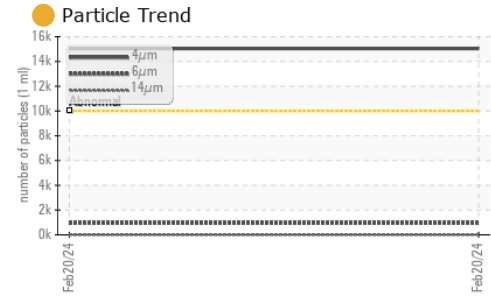
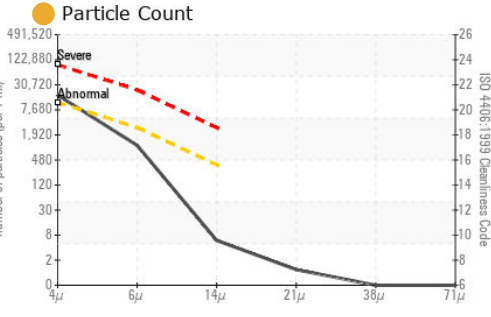
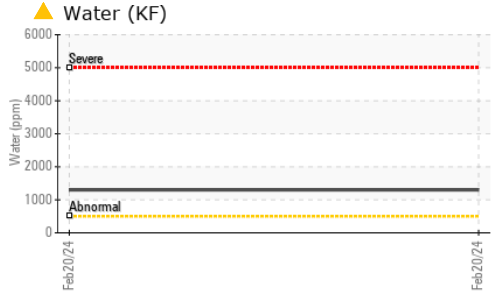
FLUID CLEANLINESS		method	limit/base	current	history1	history2
Particles >4µm		ASTM D7647	>10000	● 15040	---	---
Particles >6µm		ASTM D7647	>2500	944	---	---
Particles >14µm		ASTM D7647	>320	5	---	---
Particles >21µm		ASTM D7647	>80	1	---	---
Particles >38µm		ASTM D7647	>20	0	---	---
Particles >71µm		ASTM D7647	>4	0	---	---
Oil Cleanliness		ISO 4406 (c)	>20/18/15	● 21/17/10	---	---

FLUID DEGRADATION		method	limit/base	current	history1	history2
Acid Number (AN)	mg KOH/g	ASTM D8045		0.48	---	---





OIL ANALYSIS REPORT

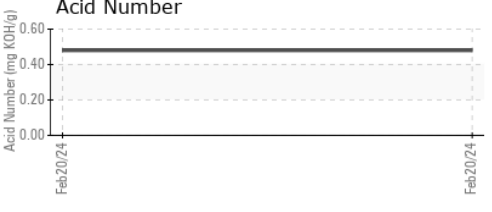
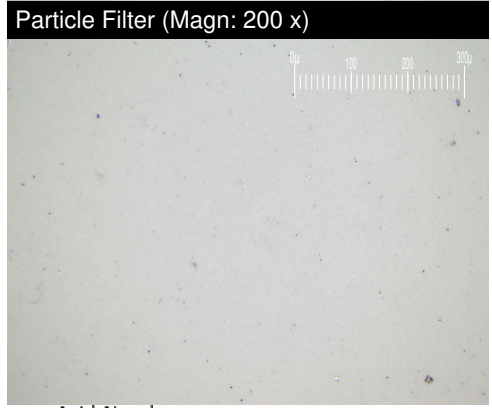
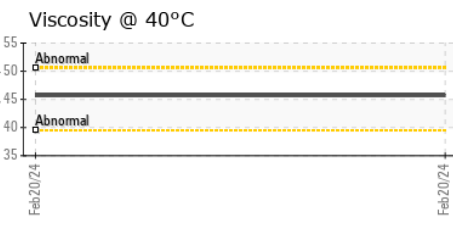
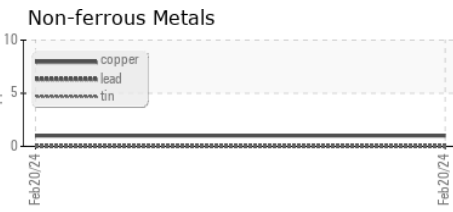
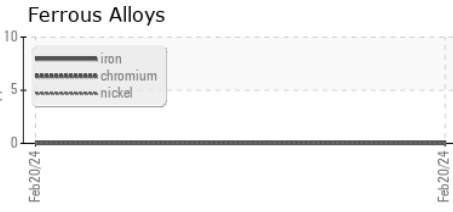


VISUAL	method	limit/base	current	history1	history2
White Metal	scalar	*Visual	NONE	NONE	---
Yellow Metal	scalar	*Visual	NONE	NONE	---
Precipitate	scalar	*Visual	NONE	NONE	---
Silt	scalar	*Visual	NONE	NONE	---
Debris	scalar	*Visual	NONE	NONE	---
Sand/Dirt	scalar	*Visual	NONE	NONE	---
Appearance	scalar	*Visual	NORML	HAZY	---
Odor	scalar	*Visual	NORML	NORML	---
Emulsified Water	scalar	*Visual	>0.05	0.2%	---
Free Water	scalar	*Visual		NEG	---

FLUID PROPERTIES	method	limit/base	current	history1	history2
Visc @ 40°C	cSt	ASTM D445	45.7	---	---

SAMPLE IMAGES	method	limit/base	current	history1	history2
Color				no image	no image
Bottom				no image	no image
PrtFilter				no image	no image

GRAPHS



Laboratory : WearCheck USA - 501 Madison Ave., Cary, NC 27513
Sample No. : PH06100113 **Received** : 26 Feb 2024
Lab Number : 06100113 **Tested** : 04 Mar 2024
Unique Number : 10898343 **Diagnosed** : 04 Mar 2024 - Doug Bogart
Test Package : PLANT (Additional Tests: KF, PrtFilter)

PAPE MATERIAL HANDLING FONTANA
 8089 CHERRY AVE
 FONTANA, CA
 US 92336
 Contact: MICHAEL HALSTEAD
 mhalstead@papemh.com
 T: (562)843-0558
 F:

Certificate L2367
 To discuss this sample report, contact Customer Service at 1-800-237-1369.
 * - Denotes test methods that are outside of the ISO 17025 scope of accreditation.
 Statements of conformity to specifications are based on the simple acceptance decision rule (JCGM 106:2012)