



FUEL REPORT

Sample Rating Trend

NORMAL



Machine Id
KIOTI CK3510HSEB YJJ801195

Component
Diesel Fuel
Fluid
{not provided} (--- GAL)

DIAGNOSIS

Recommendation

All laboratory tests indicate that this sample meets specifications for No.2 ultra-low-sulfur diesel fuel.

Corrosion

All metal levels are normal indicating no corrosion in the system.

Contaminants

The water content is negligible. There is no bacteria or fungus (yeast and/or mold) indicated in the sample. There is no indication of any contamination in the fuel. The amount and size of particulates present in the system are acceptable.

Fuel Condition

Sulfur value derived by ASTM D5453 method for ULSD validation. Sulfur level is acceptable for ULSD specification.

SAMPLE INFORMATION		method	limit/base	current	history1	history2
Sample Number	Client Info			KT0000917	---	---
Sample Date	Client Info			21 Feb 2024	---	---
Machine Age	hrs	Client Info		36	---	---
Sample Status				NORMAL	---	---

PHYSICAL PROPERTIES		method	limit/base	current	history1	history2
Specific Gravity		*ASTM D1298		0.834	---	---
Fuel Color	text	*Visual Screen		Yellow	---	---
ASTM Color	scalar	*ASTM D1500		L2.5	---	---
Visc @ 40°C	cSt	ASTM D445		2.29	---	---
Pensky-Martens Flash Point	°C	*PMCC Calculated		54	---	---

SULFUR CONTENT		method	limit/base	current	history1	history2
Sulfur	ppm	ASTM D5185m		3	---	---
Sulfur (UVF)	ppm	ASTM D5453		8	---	---

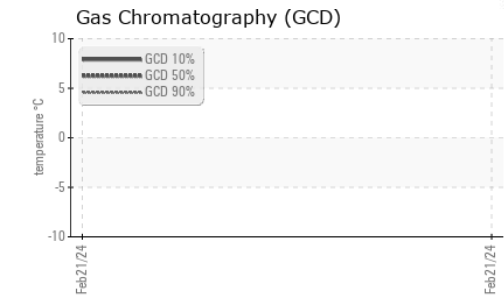
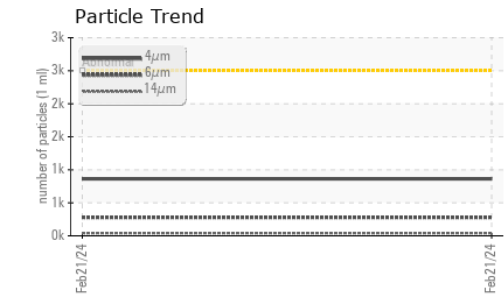
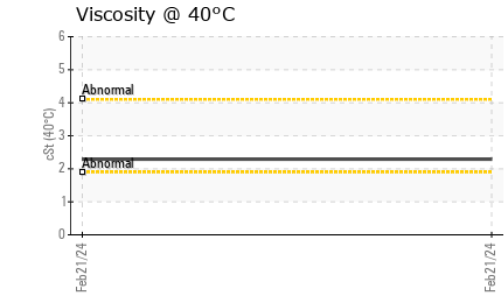
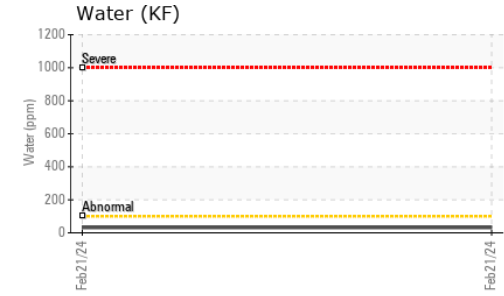
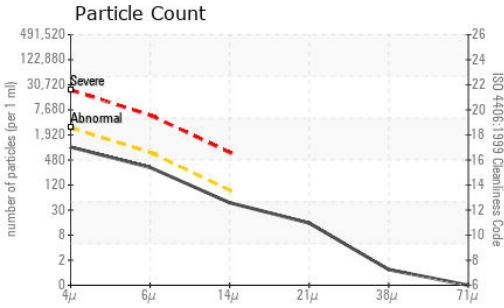
DISTILLATION		method	limit/base	current	history1	history2
Initial Boiling Point	°C	ASTM D86		149	---	---
5% Distillation Point	°C	ASTM D86		177	---	---
10% Distill Point	°C	ASTM D86		190	---	---
15% Distillation Point	°C	ASTM D86		201	---	---
20% Distill Point	°C	ASTM D86		210	---	---
30% Distill Point	°C	ASTM D86		227	---	---
40% Distill Point	°C	ASTM D86		243	---	---
50% Distill Point	°C	ASTM D86		259	---	---
60% Distill Point	°C	ASTM D86		274	---	---
70% Distill Point	°C	ASTM D86		290	---	---
80% Distill Point	°C	ASTM D86		306	---	---
85% Distillation Point	°C	ASTM D86		316	---	---
90% Distill Point	°C	ASTM D86		328	---	---
95% Distillation Point	°C	ASTM D86		346	---	---
Final Boiling Point	°C	ASTM D86		354	---	---
Distillation Residue	%	ASTM D86		1.4	---	---
Distillation Loss	%	ASTM D86		0.9	---	---

IGNITION QUALITY		method	limit/base	current	history1	history2
API Gravity		ASTM D7777		38.2	---	---
Cetane Index		ASTM D4737	<40.0	49.9	---	---

CONTAMINANTS		method	limit/base	current	history1	history2
Silicon	ppm	ASTM D5185m	<1.0	0	---	---
Sodium	ppm	ASTM D5185m	<0.1	0	---	---
Potassium	ppm	ASTM D5185m	<0.1	0	---	---
Water	%	ASTM D6304	<0.05	0.003	---	---
ppm Water	ppm	ASTM D6304	<500	32	---	---
% Gasoline	%	*In-House	<0.50	0.0	---	---
% Biodiesel	%	*In-House	<20.0	0.0	---	---



FUEL REPORT

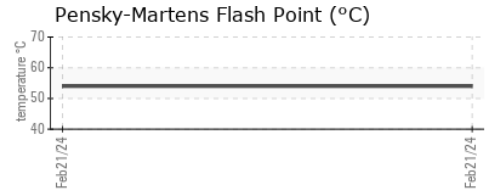
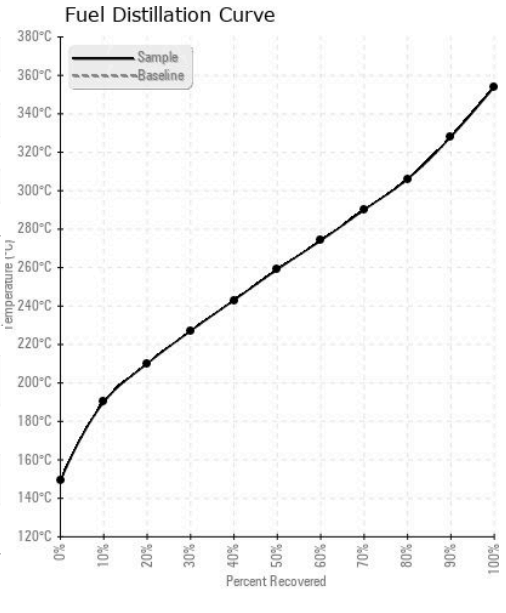


FLUID CLEANLINESS	method	limit/base	current	history1	history2
Particles >4µm	ASTM D7647	>2500	862	---	---
Particles >6µm	ASTM D7647	>640	279	---	---
Particles >14µm	ASTM D7647	>80	40	---	---
Particles >21µm	ASTM D7647	>20	13	---	---
Particles >38µm	ASTM D7647	>4	1	---	---
Particles >71µm	ASTM D7647	>3	0	---	---
Oil Cleanliness	ISO 4406 (c)	>18/16/13	17/15/12	---	---

HEAVY METALS	method	limit/base	current	history1	history2
Aluminum	ppm	ASTM D5185m <0.1	0	---	---
Nickel	ppm	ASTM D5185m <0.1	0	---	---
Lead	ppm	ASTM D5185m <0.1	0	---	---
Vanadium	ppm	ASTM D5185m <0.1	0	---	---
Iron	ppm	ASTM D5185m <0.1	0	---	---
Calcium	ppm	ASTM D5185m <0.1	0	---	---
Magnesium	ppm	ASTM D5185m <0.1	0	---	---
Phosphorus	ppm	ASTM D5185m <0.1	0	---	---
Zinc	ppm	ASTM D5185m <0.1	0	---	---

SAMPLE IMAGES	method	limit/base	current	history1	history2	
Color					no image	no image
Bottom					no image	no image

GRAPHS



Laboratory : WearCheck USA - 501 Madison Ave., Cary, NC 27513
Sample No. : KT0000917 **Received** : 26 Feb 2024
Lab Number : **06100578** **Tested** : 01 Mar 2024
Unique Number : 10898808 **Diagnosed** : 01 Mar 2024 - Doug Bogart
Test Package : DF-2 (Additional Tests: Screen)

BLUEGRASS LAWN AND GARDEN
 12711 DIXIE HWY
 LOUISVILLE, KY
 US 40272
 Contact: SERVICE DEPT
 service@bluegrasslawnandgarden.com
 T: (502)933-1724
 F:

Certificate L2367
 To discuss this sample report, contact Customer Service at 1-800-237-1369.
 * - Denotes test methods that are outside of the ISO 17025 scope of accreditation.
 Statements of conformity to specifications are based on the simple acceptance decision rule (JCGM 106:2012)