



# FUEL REPORT

Sample Rating Trend

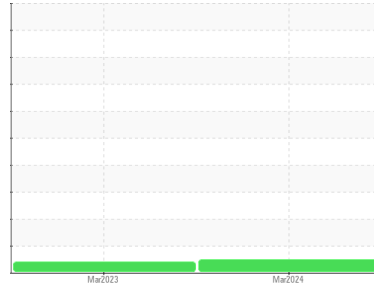
**NORMAL**



Machine Id  
**HF HOSPICE HOUSE**

Component  
**Diesel Fuel**  
Fluid

**No.2 DIESEL FUEL (ULTRALOW SULPHUR) (939 GAL)**



## DIAGNOSIS

### Recommendation

All laboratory tests indicate that this sample meets specifications for No.2 low-sulfur diesel fuel.

### Corrosion

All metal levels are normal indicating no corrosion in the system.

### Contaminants

There is no bacteria or fungus (yeast and/or mold) indicated in the sample. The water content is negligible. There is no indication of any contamination in the fuel.

### Fuel Condition

Sulfur value derived by ASTM D5453 method for ULSD validation.

## SAMPLE INFORMATION

	method	limit/base	current	history1	history2
Sample Number	Client Info		<b>WCDF4528</b>	WCDF4333	---
Sample Date	Client Info		<b>11 Mar 2024</b>	16 Mar 2023	---
Machine Age	mls	Client Info	<b>0</b>	0	---
Sample Status			<b>NORMAL</b>	ABNORMAL	---

## PHYSICAL PROPERTIES

	method	limit/base	current	history1	history2
Specific Gravity	*ASTM D1298	0.839	---	0.844	---
Fuel Color	text	*Visual Screen	Yellow	<b>Red</b>	Red
ASTM Color	scalar	*ASTM D1500		<b>L4.5</b>	L4.0
Visc @ 40°C	cSt	ASTM D445	3.0	<b>2.73</b>	2.48
Pensky-Martens Flash Point	°C	*PMCC Calculated	52	<b>64.9</b>	62
Cloud Point	°C	ASTM D5771		<b>-12</b>	-13

## SULFUR CONTENT

	method	limit/base	current	history1	history2
Sulfur	ppm	ASTM D5185m	10	<b>31</b>	0
Sulfur (UVF)	ppm	ASTM D5453		<b>21</b>	13

## DISTILLATION

	method	limit/base	current	history1	history2
Initial Boiling Point	°C	ASTM D86	165	<b>176</b>	171
5% Distillation Point	°C	ASTM D86		<b>199</b>	193
10% Distill Point	°C	ASTM D86	201	<b>209</b>	205
15% Distillation Point	°C	ASTM D86		<b>218</b>	215
20% Distill Point	°C	ASTM D86	216	<b>226</b>	223
30% Distill Point	°C	ASTM D86	230	<b>241</b>	239
40% Distill Point	°C	ASTM D86	243	<b>254</b>	254
50% Distill Point	°C	ASTM D86	255	<b>268</b>	268
60% Distill Point	°C	ASTM D86	267	<b>281</b>	282
70% Distill Point	°C	ASTM D86	280	<b>295</b>	296
80% Distill Point	°C	ASTM D86	295	<b>310</b>	311
85% Distillation Point	°C	ASTM D86		<b>320</b>	319
90% Distill Point	°C	ASTM D86	310	<b>329</b>	329
95% Distillation Point	°C	ASTM D86		<b>344</b>	345
Final Boiling Point	°C	ASTM D86	341	<b>358</b>	352
Distillation Residue	%	ASTM D86	3.0	---	1.4
Distillation Loss	%	ASTM D86	3.0	---	0.8

## IGNITION QUALITY

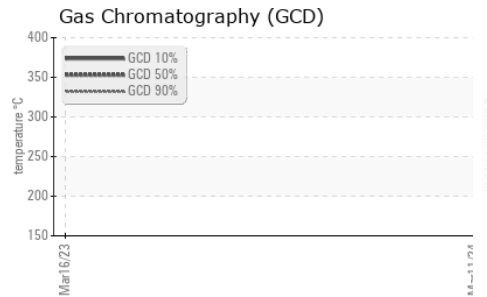
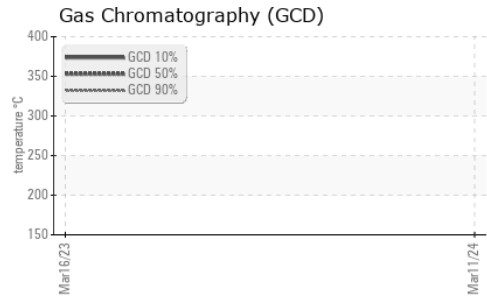
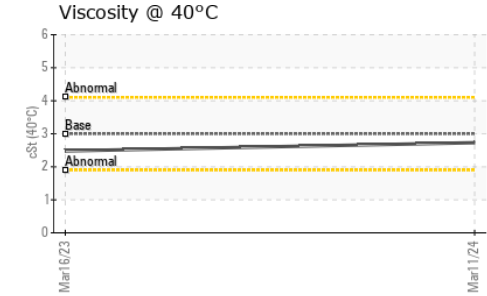
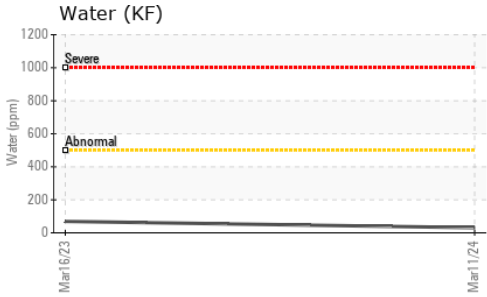
	method	limit/base	current	history1	history2
API Gravity	ASTM D7777	37.7	<b>35.9</b>	36.2	---
Cetane Index	ASTM D4737	<40.0	<b>48</b>	48.4	---

## CONTAMINANTS

	method	limit/base	current	history1	history2
Silicon	ppm	ASTM D5185m	<1.0	<b>0</b>	1
Sodium	ppm	ASTM D5185m	<0.1	<b>&lt;1</b>	<1
Potassium	ppm	ASTM D5185m	<0.1	<b>&lt;1</b>	0
Water	%	ASTM D6304	<0.05	<b>0.003</b>	0.006
ppm Water	ppm	ASTM D6304	<500	<b>31</b>	69.5
% Gasoline	%	*In-House	<0.50	<b>0.0</b>	0.0
% Biodiesel	%	*In-House	<20.0	<b>0.0</b>	1.6

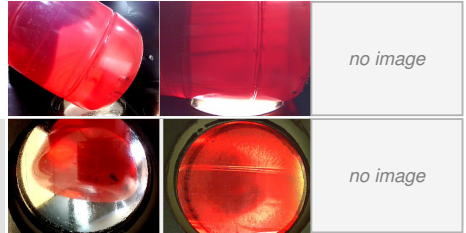


# FUEL REPORT

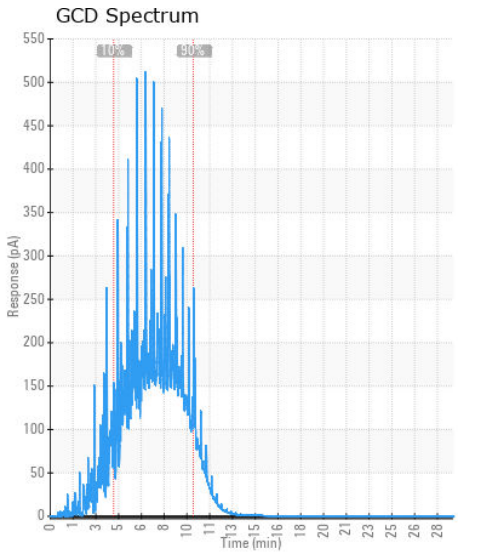
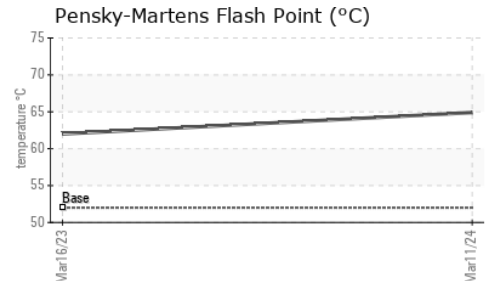
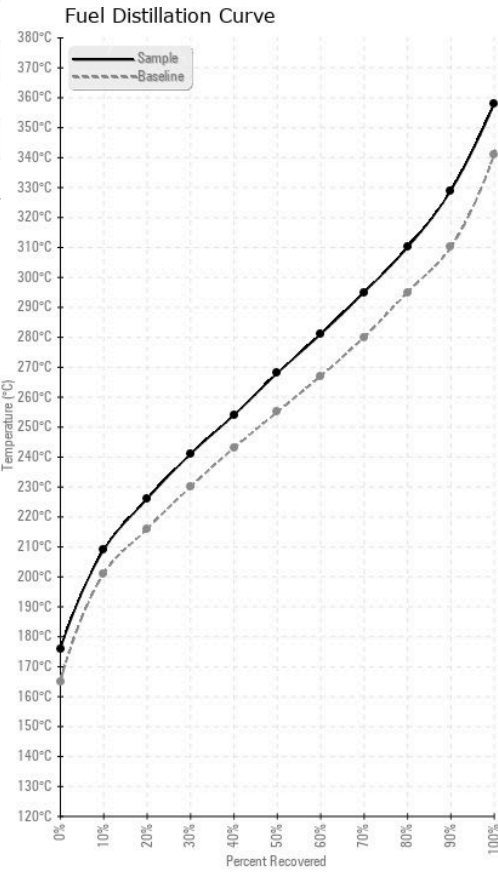


HEAVY METALS	method	limit/base	current	history1	history2
Aluminum	ppm	ASTM D5185m <0.1	0	<1	---
Nickel	ppm	ASTM D5185m <0.1	0	0	---
Lead	ppm	ASTM D5185m <0.1	0	0	---
Vanadium	ppm	ASTM D5185m <0.1	0	<1	---
Iron	ppm	ASTM D5185m <0.1	0	0	---
Calcium	ppm	ASTM D5185m <0.1	<1	0	---
Magnesium	ppm	ASTM D5185m <0.1	0	4	---
Phosphorus	ppm	ASTM D5185m <0.1	0	7	---
Zinc	ppm	ASTM D5185m <0.1	0	0	---

SAMPLE IMAGES	method	limit/base	current	history1	history2
Color					
Bottom					



## GRAPHS



Certificate L2367

**Laboratory** : WearCheck USA - 501 Madison Ave., Cary, NC 27513  
**Sample No.** : WCDF4528 **Received** : 18 Mar 2024  
**Lab Number** : 06121301 **Tested** : 01 Apr 2024  
**Unique Number** : 10930134 **Diagnosed** : 01 Apr 2024 - Doug Bogart  
**Test Package** : DF-2 ( Additional Tests: CldPt, Fuel, Screen )

**TANK WIZARDS**  
 1511 MASTERS RD NW  
 PALM BAY, FL  
 US 32907

**Contact: WENDALL STRODERD**  
 wendall@tankwizards.com  
 T: (321)427-5149  
 F: (321)574-4131

To discuss this sample report, contact Customer Service at 1-800-237-1369.

\* - Denotes test methods that are outside of the ISO 17025 scope of accreditation.

Statements of conformity to specifications are based on the simple acceptance decision rule (JCGM 106:2012)