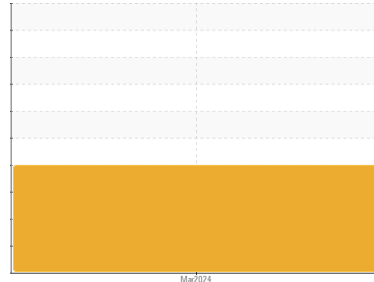




OIL ANALYSIS REPORT

Sample Rating Trend



DIRT



Machine Id
VTU102

Component
Hydraulic System

Fluid
AW HYDRAULIC OIL ISO 46 (--- GAL)

DIAGNOSIS

▲ Recommendation

We recommend you service the filters on this component if applicable. Resample at the next service interval to monitor.

Wear

All component wear rates are normal.

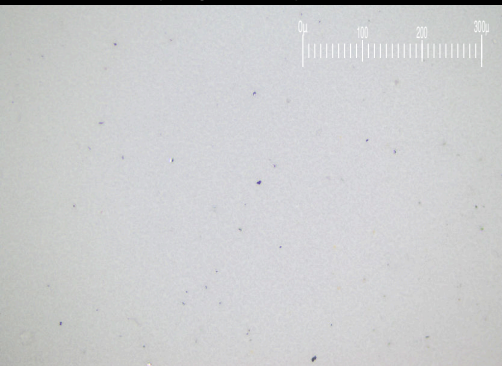
▲ Contamination

There is a high amount of particulates present in the oil. Elemental level of silicon (Si) above normal indicating ingress of seal material.

● Fluid Condition

Viscosity of sample indicates oil is within ISO 320 range, advise investigate. Confirm oil type. The AN level is acceptable for this fluid.

Particle Filter (Magn: 200 x)



SAMPLE INFORMATION

method	limit/base	current	history1	history2
Sample Number	Client Info	PH0003607	---	---
Sample Date	Client Info	18 Mar 2024	---	---
Machine Age	hrs Client Info	0	---	---
Oil Age	hrs Client Info	0	---	---
Oil Changed	Client Info	N/A	---	---
Sample Status		ABNORMAL	---	---

CONTAMINATION

method	limit/base	current	history1	history2
Water	WC Method >0.05	NEG	---	---

WEAR METALS

method	limit/base	current	history1	history2
Iron	ppm ASTM D5185m >20	0	---	---
Chromium	ppm ASTM D5185m >20	0	---	---
Nickel	ppm ASTM D5185m >20	0	---	---
Titanium	ppm ASTM D5185m	0	---	---
Silver	ppm ASTM D5185m	0	---	---
Aluminum	ppm ASTM D5185m >20	<1	---	---
Lead	ppm ASTM D5185m >20	0	---	---
Copper	ppm ASTM D5185m >20	0	---	---
Tin	ppm ASTM D5185m >20	<1	---	---
Vanadium	ppm ASTM D5185m	0	---	---
Cadmium	ppm ASTM D5185m	0	---	---

ADDITIVES

method	limit/base	current	history1	history2
Boron	ppm ASTM D5185m 5	0	---	---
Barium	ppm ASTM D5185m 5	0	---	---
Molybdenum	ppm ASTM D5185m 5	0	---	---
Manganese	ppm ASTM D5185m	0	---	---
Magnesium	ppm ASTM D5185m 25	0	---	---
Calcium	ppm ASTM D5185m 200	0	---	---
Phosphorus	ppm ASTM D5185m 300	469	---	---
Zinc	ppm ASTM D5185m 370	0	---	---
Sulfur	ppm ASTM D5185m 2500	2549	---	---

CONTAMINANTS

method	limit/base	current	history1	history2
Silicon	ppm ASTM D5185m >15	▲ 28	---	---
Sodium	ppm ASTM D5185m	0	---	---
Potassium	ppm ASTM D5185m >20	0	---	---

FLUID CLEANLINESS

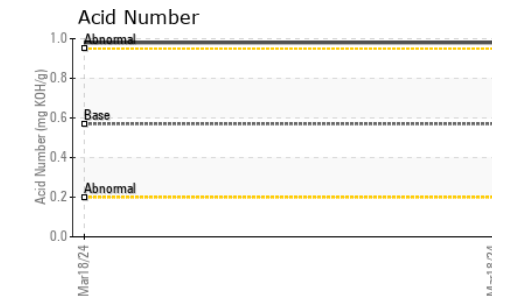
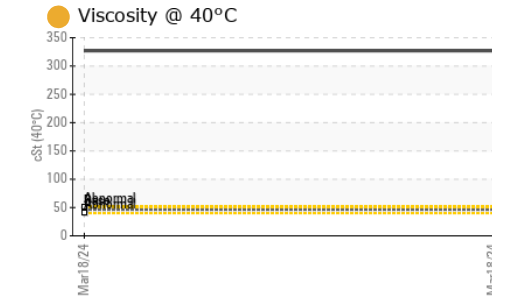
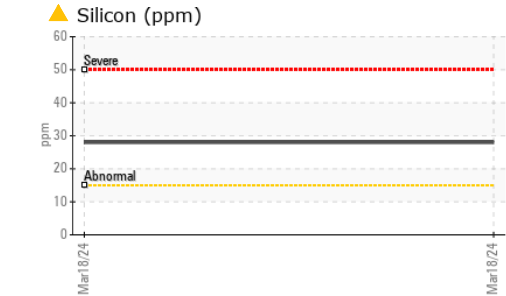
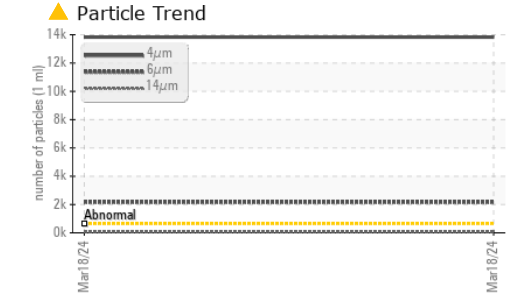
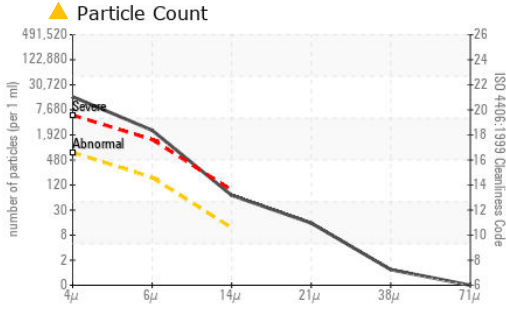
method	limit/base	current	history1	history2
Particles >4µm	ASTM D7647 >640	▲ 13828	---	---
Particles >6µm	ASTM D7647 >160	▲ 2170	---	---
Particles >14µm	ASTM D7647 >10	▲ 60	---	---
Particles >21µm	ASTM D7647 >3	▲ 13	---	---
Particles >38µm	ASTM D7647 >3	1	---	---
Particles >71µm	ASTM D7647 >3	0	---	---
Oil Cleanliness	ISO 4406 (c) >16/14/10	▲ 21/18/13	---	---

FLUID DEGRADATION

method	limit/base	current	history1	history2
Acid Number (AN)	mg KOH/g ASTM D8045 0.57	0.98	---	---



OIL ANALYSIS REPORT



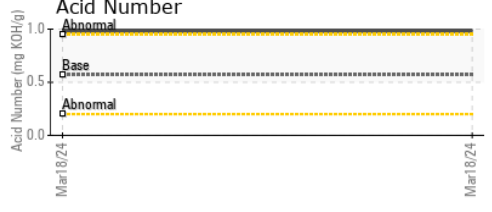
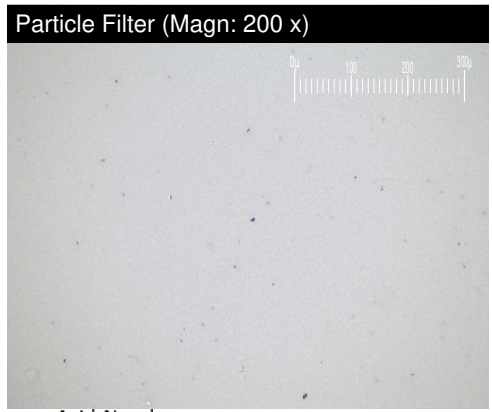
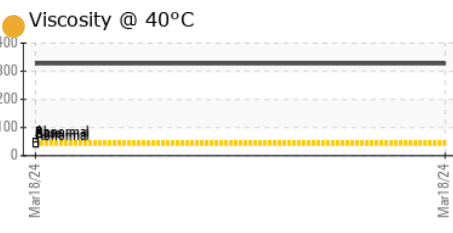
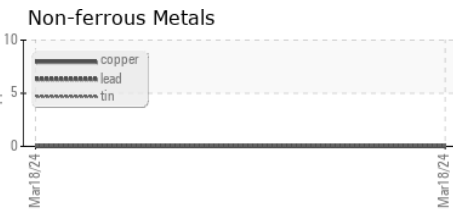
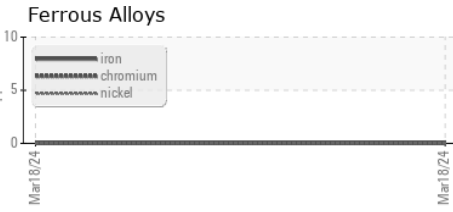
VISUAL	method	limit/base	current	history1	history2
White Metal	scalar	*Visual	NONE	NONE	---
Yellow Metal	scalar	*Visual	NONE	NONE	---
Precipitate	scalar	*Visual	NONE	NONE	---
Silt	scalar	*Visual	NONE	NONE	---
Debris	scalar	*Visual	NONE	NONE	---
Sand/Dirt	scalar	*Visual	NONE	NONE	---
Appearance	scalar	*Visual	NORML	NORML	---
Odor	scalar	*Visual	NORML	NORML	---
Emulsified Water	scalar	*Visual	>0.05	NEG	---
Free Water	scalar	*Visual		NEG	---

FLUID PROPERTIES	method	limit/base	current	history1	history2
Visc @ 40°C	cSt	ASTM D445	46	327.0	---

SAMPLE IMAGES	method	limit/base	current	history1	history2
---------------	--------	------------	---------	----------	----------

Color				no image	no image
Bottom				no image	no image
PrtFilter				no image	no image

GRAPHS



Laboratory : WearCheck USA - 501 Madison Ave., Cary, NC 27513
Sample No. : PH0003607
Lab Number : 06122307
Unique Number : 10936458
Test Package : PLANT (Additional Tests: PrtFilter)

UNIVERSAL STUDIOS HOLLYWOOD
 100 UNIVERSAL CITY PLAZA
 UNIVERSAL CITY, CA
 US 91608
 Contact: TS WAREHOUSE
 ts.warehouse@nbcuni.com

To discuss this sample report, contact Customer Service at 1-800-237-1369.
 * - Denotes test methods that are outside of the ISO 17025 scope of accreditation.
 Statements of conformity to specifications are based on the simple acceptance decision rule (JCGM 106:2012)