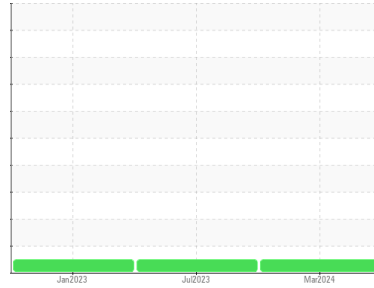


# OIL ANALYSIS REPORT

## Sample Rating Trend

**NORMAL**



Machine Id  
**ATLAS COPCO API663073 - HEARTLAND DRY 1**  
Component  
**Compressor**

### DIAGNOSIS

#### Recommendation

Resample at the next service interval to monitor.

#### Wear

All component wear rates are normal.

#### Contamination

There is no indication of any contamination in the oil.

#### Fluid Condition

The AN level is acceptable for this fluid. The condition of the oil is suitable for further service.

SAMPLE INFORMATION		method	limit/base	current	history1	history2
Sample Number	Client Info			<b>UCH06122491</b>	UCH05907763	UCH05759527
Sample Date	Client Info			<b>07 Mar 2024</b>	12 Jul 2023	24 Jan 2023
Machine Age	hrs	Client Info		<b>48250</b>	46690	46529
Oil Age	hrs	Client Info		<b>1720</b>	100	1988
Oil Changed	Client Info			<b>Not Changed</b>	Not Changed	Changed
Sample Status				<b>NORMAL</b>	NORMAL	NORMAL

CONTAMINATION		method	limit/base	current	history1	history2
Water	WC Method		>0.1	<b>NEG</b>	NEG	NEG

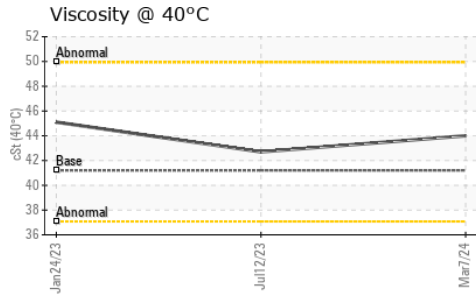
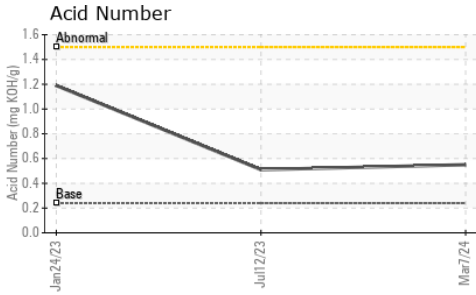
WEAR METALS		method	limit/base	current	history1	history2
Iron	ppm	ASTM D5185m	>50	<b>0</b>	<1	4
Chromium	ppm	ASTM D5185m	>5	<b>0</b>	0	0
Nickel	ppm	ASTM D5185m		<b>0</b>	0	0
Titanium	ppm	ASTM D5185m		<b>0</b>	<1	0
Silver	ppm	ASTM D5185m		<b>0</b>	0	0
Aluminum	ppm	ASTM D5185m	>15	<b>0</b>	<1	0
Lead	ppm	ASTM D5185m	>65	<b>0</b>	0	0
Copper	ppm	ASTM D5185m	>65	<b>8</b>	4	<1
Tin	ppm	ASTM D5185m	>10	<b>0</b>	0	0
Vanadium	ppm	ASTM D5185m		<b>0</b>	<1	0
Cadmium	ppm	ASTM D5185m		<b>0</b>	0	0

ADDITIVES		method	limit/base	current	history1	history2
Boron	ppm	ASTM D5185m		<b>0</b>	0	0
Barium	ppm	ASTM D5185m		<b>0</b>	0	0
Molybdenum	ppm	ASTM D5185m		<b>0</b>	0	0
Manganese	ppm	ASTM D5185m		<b>0</b>	0	0
Magnesium	ppm	ASTM D5185m		<b>0</b>	0	0
Calcium	ppm	ASTM D5185m		<b>0</b>	0	0
Phosphorus	ppm	ASTM D5185m	75	<b>31</b>	46	83
Zinc	ppm	ASTM D5185m		<b>2</b>	12	10
Sulfur	ppm	ASTM D5185m	1500	<b>1084</b>	1659	312

CONTAMINANTS		method	limit/base	current	history1	history2
Silicon	ppm	ASTM D5185m	>35	<b>0</b>	0	<1
Sodium	ppm	ASTM D5185m		<b>0</b>	<1	<1
Potassium	ppm	ASTM D5185m	>20	<b>0</b>	0	0

FLUID DEGRADATION		method	limit/base	current	history1	history2
Acid Number (AN)	mg KOH/g	ASTM D8045	0.24	<b>0.55</b>	0.51	1.19

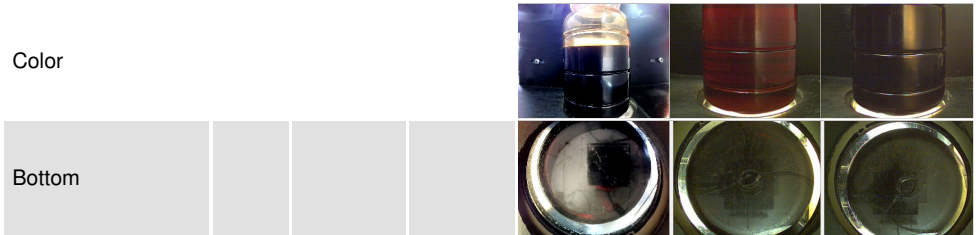
# OIL ANALYSIS REPORT



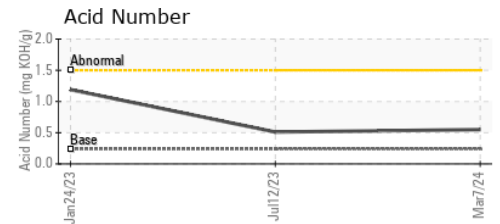
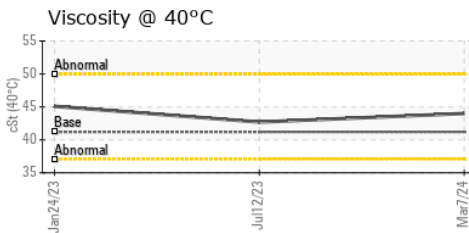
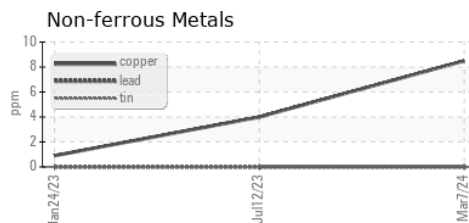
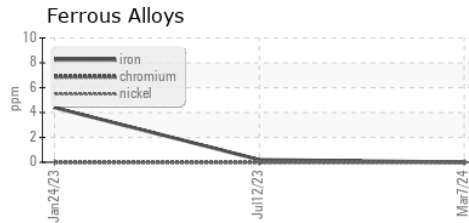
VISUAL	method	limit/base	current	history1	history2	
White Metal	scalar	*Visual	NONE	<b>NONE</b>	LIGHT	MODER
Yellow Metal	scalar	*Visual	NONE	<b>NONE</b>	NONE	NONE
Precipitate	scalar	*Visual	NONE	<b>NONE</b>	NONE	NONE
Silt	scalar	*Visual	NONE	<b>NONE</b>	NONE	NONE
Debris	scalar	*Visual	NONE	<b>NONE</b>	LIGHT	LIGHT
Sand/Dirt	scalar	*Visual	NONE	<b>NONE</b>	NONE	NONE
Appearance	scalar	*Visual	NORML	<b>NORML</b>	NORML	NORML
Odor	scalar	*Visual	NORML	<b>NORML</b>	NORML	NORML
Emulsified Water	scalar	*Visual	>0.1	<b>NEG</b>	NEG	NEG
Free Water	scalar	*Visual		<b>NEG</b>	NEG	NEG

FLUID PROPERTIES	method	limit/base	current	history1	history2	
Visc @ 40°C	cSt	ASTM D445	41.2	<b>44.0</b>	42.7	45.1

SAMPLE IMAGES	method	limit/base	current	history1	history2
---------------	--------	------------	---------	----------	----------



## GRAPHS



Certificate L2367

**Laboratory** : WearCheck USA - 501 Madison Ave., Cary, NC 27513  
**Sample No.** : UCH06122491  
**Lab Number** : **06122491**  
**Unique Number** : 10936642  
**Test Package** : IND 2

**DIRECT AIR - AIR TECHNOLOGIES**  
 400 WRIGHT AVE  
 MIDDLETOWN, OH  
 US 45044  
 Contact: DAVID DUNCAN  
 david.duncan@aircompressors.com  
 T: (502)254-2520  
 F: (513)539-6040

To discuss this sample report, contact Customer Service at 1-800-237-1369.

\* - Denotes test methods that are outside of the ISO 17025 scope of accreditation.

Statements of conformity to specifications are based on the simple acceptance decision rule (JCGM 106:2012)