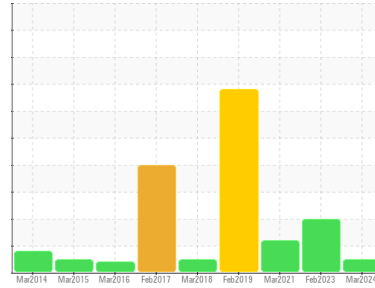




OIL ANALYSIS REPORT

Sample Rating Trend



NORMAL



Area
[603865964 SDR]
 Machine Id
EFFULENT PMP 8 (S/N 20065009)
 Component
Gearbox
 Fluid
SAE 30W (--- GAL)

DIAGNOSIS

Recommendation

Resample at the next service interval to monitor.

Wear

All component wear rates are normal.

Contamination

There is no indication of any contamination in the oil.

Fluid Condition

The AN level is acceptable for this fluid. The condition of the oil is suitable for further service.

SAMPLE INFORMATION

method	limit/base	current	history1	history2
Sample Number	Client Info	WC0854406	WC0605307	WC0440564
Sample Date	Client Info	07 Mar 2024	20 Feb 2023	05 Mar 2021
Machine Age	hrs	Client Info	0	0
Oil Age	hrs	Client Info	0	0
Oil Changed	Client Info	Changed	Changed	Changed
Sample Status		NORMAL	ABNORMAL	ABNORMAL

WEAR METALS

method	limit/base	current	history1	history2	
Iron	ppm	ASTM D5185m >200	13	193	▲ 214
Chromium	ppm	ASTM D5185m >15	<1	1	<1
Nickel	ppm	ASTM D5185m >15	<1	<1	0
Titanium	ppm	ASTM D5185m	<1	<1	<1
Silver	ppm	ASTM D5185m	<1	0	0
Aluminum	ppm	ASTM D5185m >25	2	1	<1
Lead	ppm	ASTM D5185m >100	<1	0	0
Copper	ppm	ASTM D5185m >200	<1	<1	0
Tin	ppm	ASTM D5185m >25	1	0	0
Antimony	ppm	ASTM D5185m >5	---	---	0
Vanadium	ppm	ASTM D5185m	<1	0	0
Cadmium	ppm	ASTM D5185m	<1	0	0

ADDITIVES

method	limit/base	current	history1	history2	
Boron	ppm	ASTM D5185m	0	0	<1
Barium	ppm	ASTM D5185m	1	0	0
Molybdenum	ppm	ASTM D5185m	<1	<1	<1
Manganese	ppm	ASTM D5185m	<1	2	2
Magnesium	ppm	ASTM D5185m	<1	2	2
Calcium	ppm	ASTM D5185m	4	5	10
Phosphorus	ppm	ASTM D5185m	17	25	23
Zinc	ppm	ASTM D5185m	4	4	3
Sulfur	ppm	ASTM D5185m	302	1423	1822

CONTAMINANTS

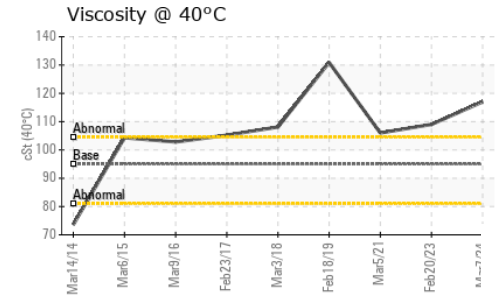
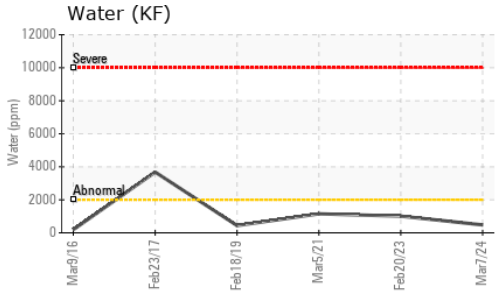
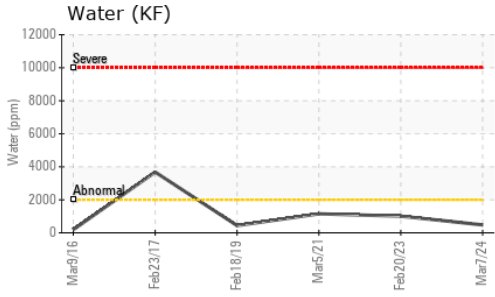
method	limit/base	current	history1	history2	
Silicon	ppm	ASTM D5185m >50	<1	1	0
Sodium	ppm	ASTM D5185m	0	2	3
Potassium	ppm	ASTM D5185m >20	2	2	0
Water	%	ASTM D6304 >0.2	0.048	0.101	0.115
ppm Water	ppm	ASTM D6304 >2000	480	1010	1150

FLUID DEGRADATION

method	limit/base	current	history1	history2	
Acid Number (AN)	mg KOH/g	ASTM D8045	0.054	0.092	0.05



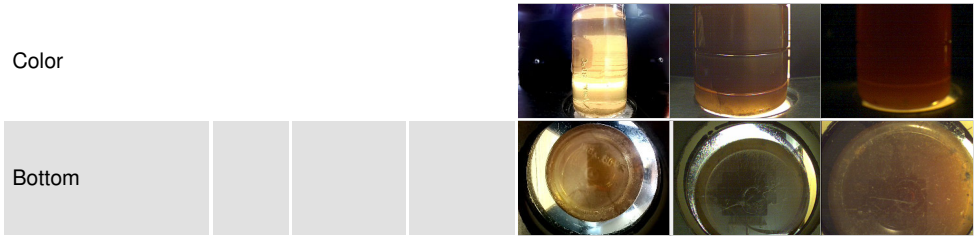
OIL ANALYSIS REPORT



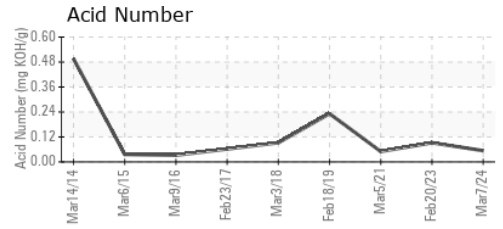
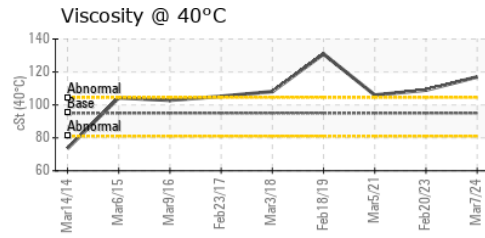
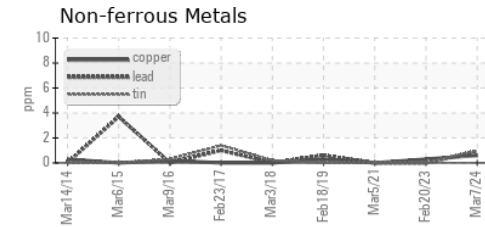
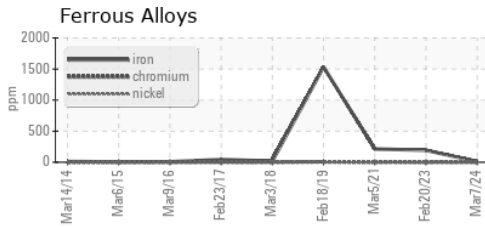
VISUAL	method	limit/base	current	history1	history2
White Metal	scalar	*Visual	NONE	NONE	NONE
Yellow Metal	scalar	*Visual	NONE	NONE	NONE
Precipitate	scalar	*Visual	NONE	NONE	NONE
Silt	scalar	*Visual	NONE	NONE	NONE
Debris	scalar	*Visual	NONE	NONE	NONE
Sand/Dirt	scalar	*Visual	NONE	NONE	NONE
Appearance	scalar	*Visual	NORML	NORML	NORML
Odor	scalar	*Visual	NORML	NORML	NORML
Emulsified Water	scalar	*Visual	>0.2	0.2%	0.2%
Free Water	scalar	*Visual	NEG	1.0	NEG

FLUID PROPERTIES	method	limit/base	current	history1	history2	
Visc @ 40°C	cSt	ASTM D445	95.0	117	109	106

SAMPLE IMAGES	method	limit/base	current	history1	history2
---------------	--------	------------	---------	----------	----------



GRAPHS



Certificate L2367

Laboratory : WearCheck USA - 501 Madison Ave., Cary, NC 27513
Sample No. : WC0854406 **Received** : 19 Mar 2024
Lab Number : 06122550 **Tested** : 26 Mar 2024
Unique Number : 10936701 **Diagnosed** : 26 Mar 2024 - Jonathan Hester
Test Package : IND 2 (Additional Tests: KF)

MARS CHOCOLATE
 2019 NORTH OAK PARK
 CHICAGO, IL
 US 60707
 Contact: TONY FIORE
 tony.fiore@effem.com
 T: (773)745-2279
 F:

To discuss this sample report, contact Customer Service at 1-800-237-1369.

* - Denotes test methods that are outside of the ISO 17025 scope of accreditation.

Statements of conformity to specifications are based on the simple acceptance decision rule (JCGM 106:2012)