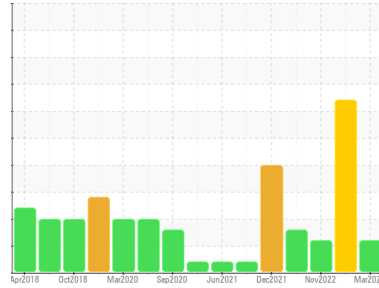


OIL ANALYSIS REPORT

Sample Rating Trend



ISO



Area
PF RESIN
Machine Id
RX1 A1 AGITATOR (S/N 30292 7)
Component
Gearbox
Fluid
CHEVRON MEROPA 150 (1 GAL)

DIAGNOSIS

Recommendation

Filter oil if possible using the drum station filter. If filtration is not possible, consider flushing and filling the gearbox at next available opportunity. Review that sample port is not being pulled from drain. Resample at next normal interval.

Wear

Wear particles are low and acceptable.

Contamination

Particle contamination is significantly elevated. Filtration can help extend machine life.

Fluid Condition

Fluid health is acceptable for continued use.

SAMPLE INFORMATION

	method	limit/base	current	history1	history2
Sample Number	Client Info		PLS0000842	PLS0000627	PLS0000630
Sample Date	Client Info		15 Mar 2024	18 Jul 2023	28 Nov 2022
Machine Age	yrs	Client Info	39	39	39
Oil Age	yrs	Client Info	0	0	0
Oil Changed	Client Info		Not Changed	Not Changed	Not Changed
Sample Status			ABNORMAL	SEVERE	ABNORMAL

CONTAMINATION

	method	limit/base	current	history1	history2
Water	WC Method	>0.2	NEG	NEG	NEG

WEAR METALS

	method	limit/base	current	history1	history2
PQ	ASTM D8184		18	33	14
Iron	ppm	ASTM D5185m >200	19	24	8
Chromium	ppm	ASTM D5185m >15	0	<1	0
Nickel	ppm	ASTM D5185m >15	0	0	0
Titanium	ppm	ASTM D5185m	0	0	0
Silver	ppm	ASTM D5185m	0	0	0
Aluminum	ppm	ASTM D5185m >25	0	<1	0
Lead	ppm	ASTM D5185m >100	0	0	0
Copper	ppm	ASTM D5185m >200	<1	2	0
Tin	ppm	ASTM D5185m >25	<1	0	0
Vanadium	ppm	ASTM D5185m	0	0	0
Cadmium	ppm	ASTM D5185m	0	<1	0

ADDITIVES

	method	limit/base	current	history1	history2
Boron	ppm	ASTM D5185m	22	28	23
Barium	ppm	ASTM D5185m	0	0	0
Molybdenum	ppm	ASTM D5185m	1	2	<1
Manganese	ppm	ASTM D5185m	<1	<1	<1
Magnesium	ppm	ASTM D5185m	0	1	2
Calcium	ppm	ASTM D5185m	95	108	122
Phosphorus	ppm	ASTM D5185m	334	368	236
Zinc	ppm	ASTM D5185m	41	49	39
Sulfur	ppm	ASTM D5185m	12555	14191	10124

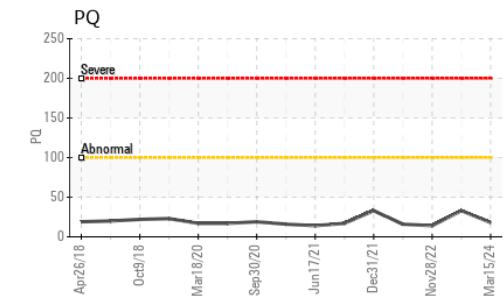
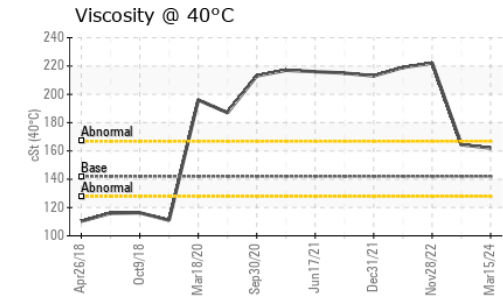
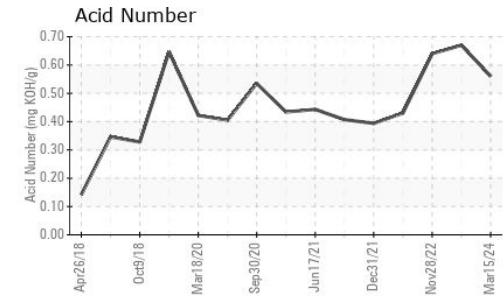
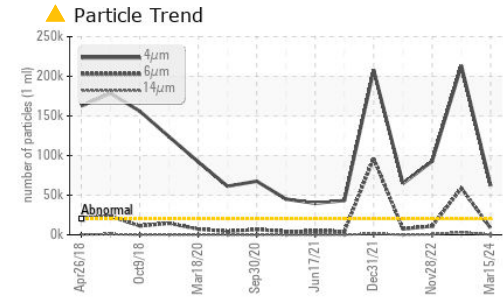
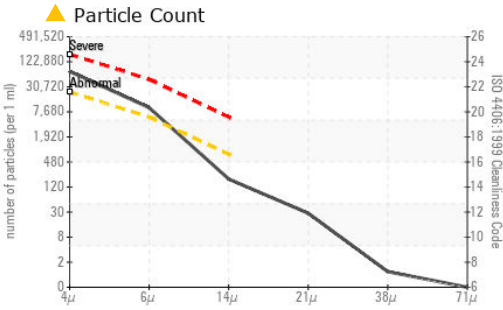
CONTAMINANTS

	method	limit/base	current	history1	history2
Silicon	ppm	ASTM D5185m >50	1	2	<1
Sodium	ppm	ASTM D5185m	0	<1	0
Potassium	ppm	ASTM D5185m >20	0	0	<1

INFRA-RED

	method	limit/base	current	history1	history2
Soot %	%	*ASTM D7844	0	0	0.1
Nitration	Abs/cm	*ASTM D7624	2.9	2.9	3.0
Sulfation	Abs/.1mm	*ASTM D7415	12.2	12.4	13.0

OIL ANALYSIS REPORT



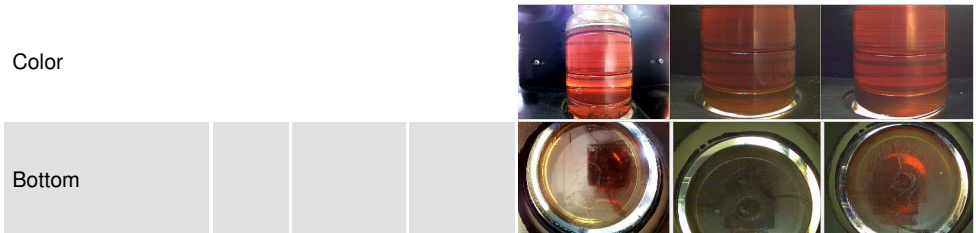
FLUID CLEANLINESS	method	limit/base	current	history1	history2
Particles >4µm	ASTM D7647	>20000	▲ 62083	▲ 213411	▲ 92771
Particles >6µm	ASTM D7647	>5000	● 8432	▲ 58800	▲ 10975
Particles >14µm	ASTM D7647	>640	165	▲ 3213	526
Particles >21µm	ASTM D7647	>160	25	▲ 735	172
Particles >38µm	ASTM D7647	>40	1	34	27
Particles >71µm	ASTM D7647	>10	0	3	6
Oil Cleanliness	ISO 4406 (c)	>21/19/16	▲ 23/20/15	▲ 25/23/19	▲ 24/21/16

FLUID DEGRADATION	method	limit/base	current	history1	history2
Oxidation	Abs./1mm *ASTM D7414		3.9	3.8	3.2
Acid Number (AN)	mg KOH/g ASTM D8045		0.56	0.67	0.64

VISUAL	method	limit/base	current	history1	history2
White Metal	scalar *Visual	NONE	NONE	LIGHT	NONE
Yellow Metal	scalar *Visual	NONE	NONE	NONE	NONE
Precipitate	scalar *Visual	NONE	NONE	NONE	NONE
Silt	scalar *Visual	NONE	NONE	NONE	NONE
Debris	scalar *Visual	NONE	NONE	NONE	LIGHT
Sand/Dirt	scalar *Visual	NONE	NONE	NONE	NONE
Appearance	scalar *Visual	NORML	NORML	NORML	NORML
Odor	scalar *Visual	NORML	NORML	NORML	NORML
Emulsified Water	scalar *Visual	>0.2	NEG	NEG	NEG
Free Water	scalar *Visual		NEG	NEG	NEG

FLUID PROPERTIES	method	limit/base	current	history1	history2
Visc @ 40°C	cSt ASTM D445	142	162	▲ 164.4	222

SAMPLE IMAGES	method	limit/base	current	history1	history2
---------------	--------	------------	---------	----------	----------



Laboratory : WearCheck USA - 501 Madison Ave., Cary, NC 27513
Sample No. : PLS0000842
Lab Number : **06123067**
Unique Number : 10937218
Test Package : IND 2 (Additional Tests: FT-IR, PQ, PrtCount)

HEXION INC - LA GRANDE PLANT
 62575 OREGON HWY 82
 LA GRANDE, OR
 US 97850
 Contact: IAN PARKS
 ian.parks@hexion.com
 T: (541)963-7155
 F: (541)963-0957

Certificate L2367
 To discuss this sample report, contact Customer Service at 1-800-237-1369.
 * - Denotes test methods that are outside of the ISO 17025 scope of accreditation.
 Statements of conformity to specifications are based on the simple acceptance decision rule (JCGM 106:2012)