



COOLANT REPORT

Sample Rating Trend

WEAR



Area
THUNDER SPIRIT [200005313]
 Machine Id
06WEA84032 - GEN
 Component
Coolant
 Fluid
{not provided} (--- QTS)



DIAGNOSIS

▲ Recommendation

We advise that you inspect for the source(s) of wear. We recommend an early resample to monitor this condition.

▲ Corrosion

Metal levels indicate corrosion in the cooling system.

Contaminants

There is no indication of any contamination in the coolant.

Coolant Condition

Glycol and nitrite levels are acceptable. The pH level of this fluid is within the acceptable limits.

SAMPLE INFORMATION

	method	limit/base	current	history1	history2
Sample Number	Client Info		NX015508	---	---
Sample Date	Client Info		14 Feb 2024	---	---
Machine Age	hrs	Client Info	51413	---	---
Oil Age	hrs	Client Info	0	---	---
Oil Changed	Client Info		N/A	---	---
Sample Status			SEVERE	---	---

PHYSICAL TEST RESULTS

	method	limit/base	current	history1	history2
Glycol Type	FT-IR		---	---	---
Specific Gravity	*ASTM D1298		1.075	---	---
pH	Scale 0-14	ASTM D1287	8.49	---	---
Nitrites	ppm	AP-053:2009	748	---	---
Reserve Alkalinity	Scale 0-20	*ASTM D1121	---	---	---
Percentage Glycol	%	ASTM D3321	56.3	---	---
Freezing Point	°F	ASTM D3321	-50	---	---
Total Dissolved Solids			304.5	---	---
Carboxylate			n/a	---	---

CORROSION INHIBITORS

	method	limit/base	current	history1	history2
Silicon	ppm	ASTM D6130	66	---	---
Phosphorus	ppm	ASTM D6130	1060	---	---
Boron	ppm	ASTM D6130	184	---	---
Molybdenum	ppm	ASTM D6130	120	---	---

CORROSION

	method	limit/base	current	history1	history2
Iron	ppm	ASTM D6130	>15 ▲ 60	---	---
Aluminum	ppm	ASTM D6130	>10 3	---	---
Copper	ppm	ASTM D6130	>10 1	---	---
Lead	ppm	ASTM D6130	>10 1	---	---
Tin	ppm	ASTM D6130	>10 0	---	---
Zinc	ppm	ASTM D6130	4	---	---

CONTAMINANTS

	method	limit/base	current	history1	history2
Chlorine	ppm	ASTM D6130	24	---	---

CARRIER SALTS

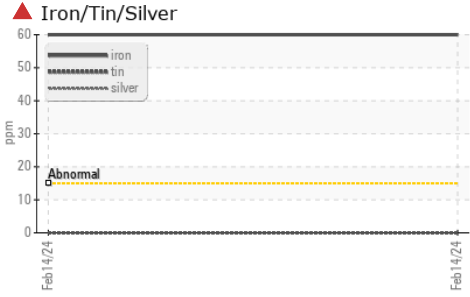
	method	limit/base	current	history1	history2
Sodium	ppm	ASTM D6130	567	---	---
Potassium	ppm	ASTM D6130	3115	---	---



SCALE POTENTIAL

	method	limit/base	current	history1	history2
Calcium	ppm	ASTM D6130	1	---	---
Magnesium	ppm	ASTM D6130	<1	---	---

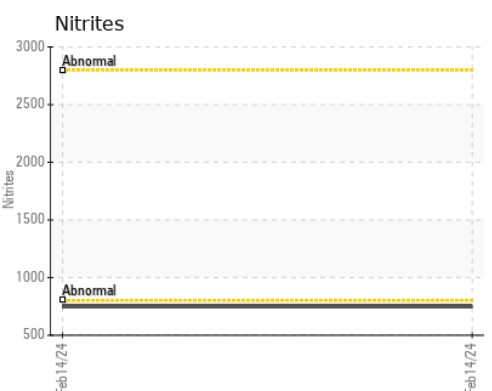
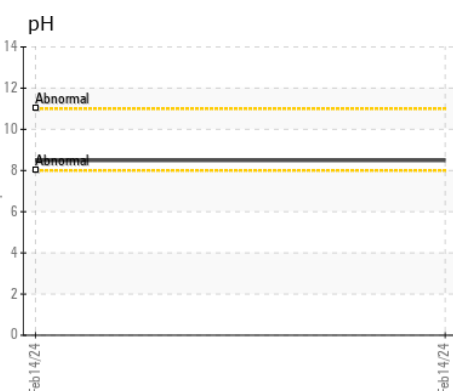
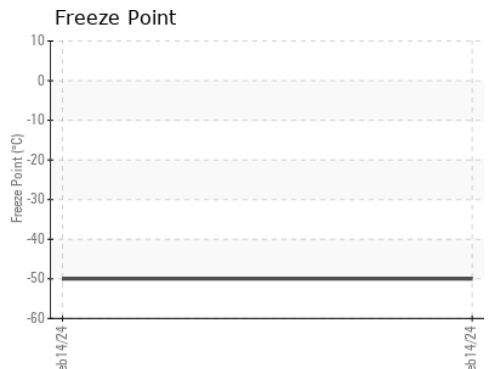
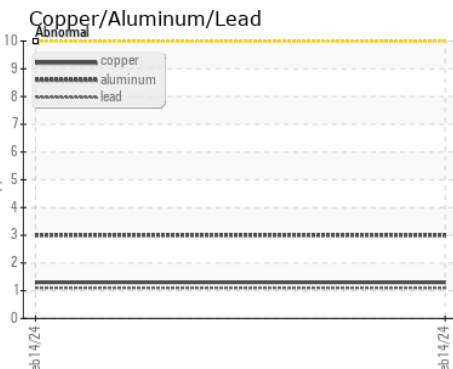
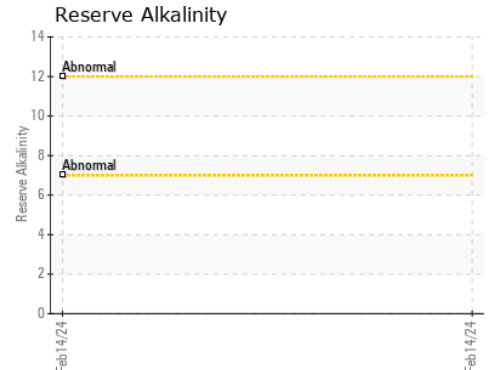
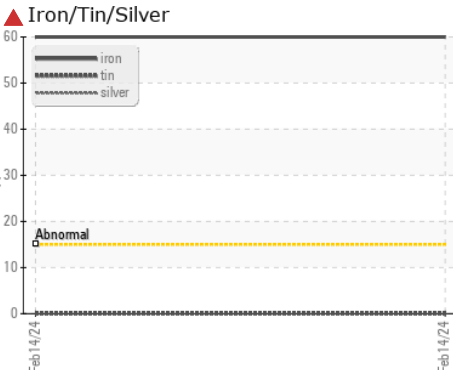


COOLANT REPORT



VISUAL	method	limit/base	current	history1	history2
Coolant Color	*Visual		Purpl	---	---
Coolant Appearance	*Visual	Clear	normal	---	---
Color				no image	no image
Bottom				no image	no image

GRAPHS



Laboratory : WearCheck USA - 501 Madison Ave., Cary, NC 27513
Sample No. : NX015508 **Received** : 19 Mar 2024
Lab Number : **06123278** **Tested** : 22 Mar 2024
Unique Number : 10937429 **Diagnosed** : 22 Mar 2024 - Jonathan Hester
Test Package : COOL- (Additional Tests: BoilingPoint, COOL, GlycolType, ICP)

NORDEX USA - Chicago
 300 SOUTH WACKER DRIVE, SUITE 1500
 CHICAGO, IL
 US 60606
 Contact: DEVIN LINEHAN
 DLinehan@nordex-online.com
 T: (312)386-4124
 F: (312)386-7102

Certificate L2367
 To discuss this sample report, contact Customer Service at 1-800-237-1369.
 * - Denotes test methods that are outside of the ISO 17025 scope of accreditation.
 Statements of conformity to specifications are based on the simple acceptance decision rule (JCGM 106:2012)