



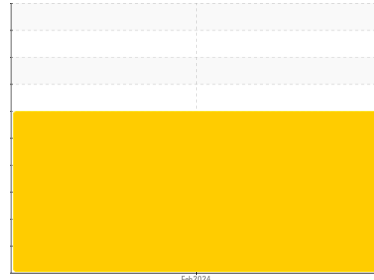
COOLANT REPORT

Sample Rating Trend

WEAR



Area
THUNDER SPIRIT [200005313]
 Machine Id
01WEA84010 - GEN (S/N 72802187632)
 Component
Coolant
 Fluid
CONVENTIONAL COOLANT (--- LTR)



DIAGNOSIS

▲ Recommendation

We advise that you inspect for the source(s) of wear. We recommend an early resample to monitor this condition.

▲ Corrosion

Metal levels indicate corrosion in the cooling system.

Contaminants

There is no indication of any contamination in the coolant.

Coolant Condition

Glycol and nitrite levels are acceptable. The pH level of this fluid is within the acceptable limits.

SAMPLE INFORMATION

	method	limit/base	current	history1	history2
Sample Number	Client Info		NX014498	---	---
Sample Date	Client Info		15 Feb 2024	---	---
Machine Age	hrs	Client Info	57300	---	---
Oil Age	hrs	Client Info	0	---	---
Oil Changed	Client Info		N/A	---	---
Sample Status			SEVERE	---	---

PHYSICAL TEST RESULTS

	method	limit/base	current	history1	history2
Glycol Type	FT-IR		---	---	---
Specific Gravity	*ASTM D1298		1.073	---	---
pH	Scale 0-14	ASTM D1287	8.43	---	---
Nitrites	ppm	AP-053:2009	936	---	---
Reserve Alkalinity	Scale 0-20	*ASTM D1121	---	---	---
Percentage Glycol	%	ASTM D3321	54.6	---	---
Freezing Point	°F	ASTM D3321	-45	---	---
Total Dissolved Solids			267.0	---	---
Carboxylate			n/a	---	---

CORROSION INHIBITORS

	method	limit/base	current	history1	history2
Silicon	ppm	ASTM D6130	23	---	---
Phosphorus	ppm	ASTM D6130	1031	---	---
Boron	ppm	ASTM D6130	173	---	---
Molybdenum	ppm	ASTM D6130	160	---	---

CORROSION

	method	limit/base	current	history1	history2
Iron	ppm	ASTM D6130 >15	▲ 38	---	---
Aluminum	ppm	ASTM D6130 >10	5	---	---
Copper	ppm	ASTM D6130 >10	1	---	---
Lead	ppm	ASTM D6130 >10	1	---	---
Tin	ppm	ASTM D6130 >10	0	---	---
Zinc	ppm	ASTM D6130	6	---	---

CONTAMINANTS

	method	limit/base	current	history1	history2
Chlorine	ppm	ASTM D6130	23	---	---

CARRIER SALTS

	method	limit/base	current	history1	history2
Sodium	ppm	ASTM D6130	523	---	---
Potassium	ppm	ASTM D6130	2999	---	---

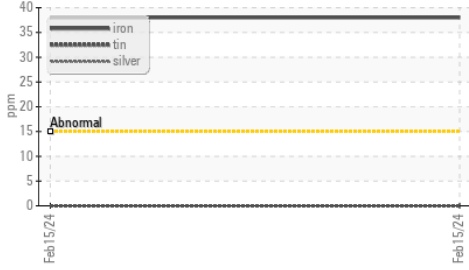
SCALE POTENTIAL

	method	limit/base	current	history1	history2
Calcium	ppm	ASTM D6130	<1	---	---
Magnesium	ppm	ASTM D6130	<1	---	---

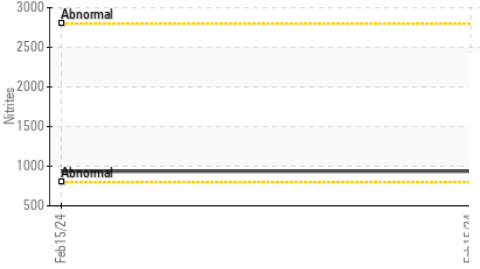




COOLANT REPORT

▲ Iron/Tin/Silver



Nitrites



VISUAL	method	limit/base	current	history1	history2
Coolant Color	*Visual		Pink	---	---
Coolant Appearance	*Visual	Clear	normal	---	---
Color				no image	no image
Bottom				no image	no image

GRAPHS

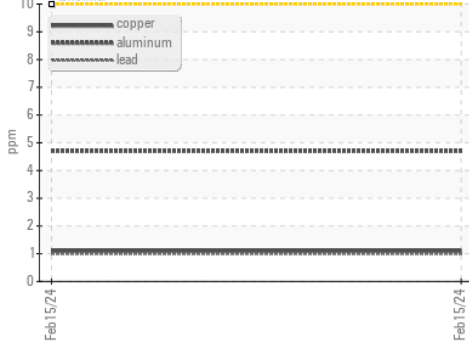
▲ Iron/Tin/Silver



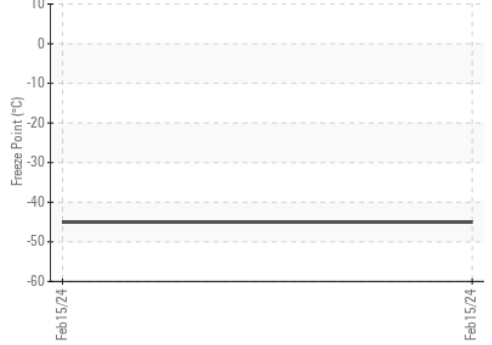
Reserve Alkalinity



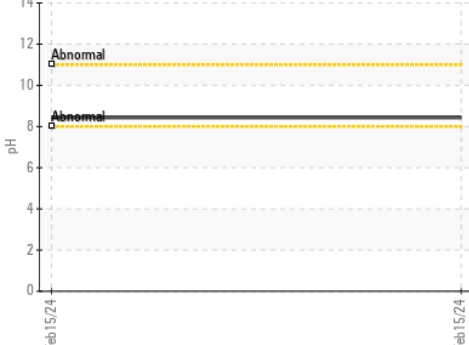
Copper/Aluminum/Lead



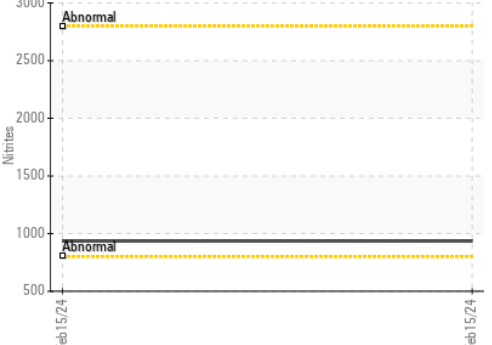
Freeze Point



pH



Nitrites



Certificate L2367

Laboratory : WearCheck USA - 501 Madison Ave., Cary, NC 27513
Sample No. : NX014498 **Received** : 19 Mar 2024
Lab Number : 06123289 **Tested** : 20 Mar 2024
Unique Number : 10937440 **Diagnosed** : 22 Mar 2024 - Jonathan Hester
Test Package : COOL- (Additional Tests: BoilingPoint, COOL, GlycolType, ICP)

NORDEX USA - Chicago
 300 SOUTH WACKER DRIVE, SUITE 1500
 CHICAGO, IL
 US 60606
 Contact: DEVIN LINEHAN
 DLinehan@nordex-online.com
 T: (312)386-4124
 F: (312)386-7102

To discuss this sample report, contact Customer Service at 1-800-237-1369.
 * - Denotes test methods that are outside of the ISO 17025 scope of accreditation.
 Statements of conformity to specifications are based on the simple acceptance decision rule (JCGM 106:2012)