

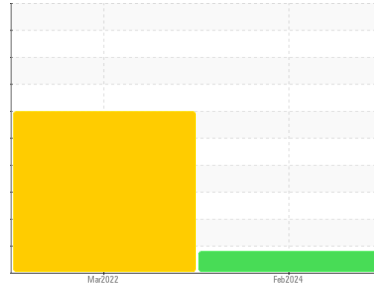


COOLANT REPORT

Sample Rating Trend

WEAR

Area
THUNDER SPIRIT [200005313]
 Machine Id
17WEA84035 - GENERATOR (S/N 10615063)
 Component
Coolant
 Fluid
EXTENDED LIFE COOLANT (--- QTS)



DIAGNOSIS

Recommendation

We advise that you inspect for the source(s) of wear. We recommend an early resample to monitor this condition.

Corrosion

Metal levels indicate corrosion in the cooling system.

Contaminants

There is no indication of any contamination in the coolant.

Coolant Condition

Glycol and nitrite levels are acceptable. The pH level of this fluid is within the acceptable limits.

SAMPLE INFORMATION

method	limit/base	current	history1	history2	
Sample Number	Client Info	NX014475	NX010559	---	
Sample Date	Client Info	26 Feb 2024	15 Mar 2022	---	
Machine Age	hrs	Client Info	62319	47709	---
Oil Age	hrs	Client Info	0	0	---
Oil Changed	Client Info	N/A	N/A	---	
Sample Status			ABNORMAL	SEVERE	---

PHYSICAL TEST RESULTS

method	limit/base	current	history1	history2	
Glycol Type	FT-IR	---	---	---	
Specific Gravity	*ASTM D1298	1.076	1.075	---	
pH	Scale 0-14	ASTM D1287	7.81	8.32	---
Nitrites	ppm	AP-053:2009	900	560	---
Reserve Alkalinity	Scale 0-20	*ASTM D1121	---	---	---
Percentage Glycol	%	ASTM D3321	56.7	55.9	---
Freezing Point	°F	ASTM D3321	-50	-47	---
Total Dissolved Solids			326.0	252.0	---
Carboxylate			n/a	n/a	---

CORROSION INHIBITORS

method	limit/base	current	history1	history2	
Silicon	ppm	ASTM D6130	8	23	---
Phosphorus	ppm	ASTM D6130	1698	985	---
Boron	ppm	ASTM D6130	255	291	---
Molybdenum	ppm	ASTM D6130	71	358	---

CORROSION

method	limit/base	current	history1	history2		
Iron	ppm	ASTM D6130	>15	2	4	---
Aluminum	ppm	ASTM D6130	>10	2	2	---
Copper	ppm	ASTM D6130	>10	▲ 15	▲ 163	---
Lead	ppm	ASTM D6130	>10	<1	0	---
Tin	ppm	ASTM D6130	>10	0	0	---
Zinc	ppm	ASTM D6130		0	4	---

CONTAMINANTS

method	limit/base	current	history1	history2	
Chlorine	ppm	ASTM D6130	23	0	---

CARRIER SALTS

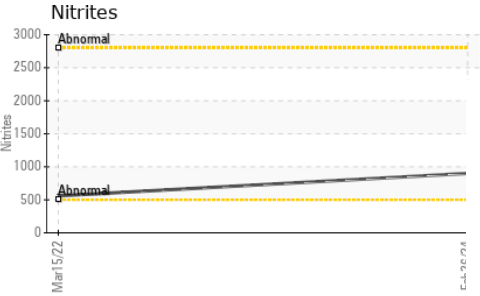
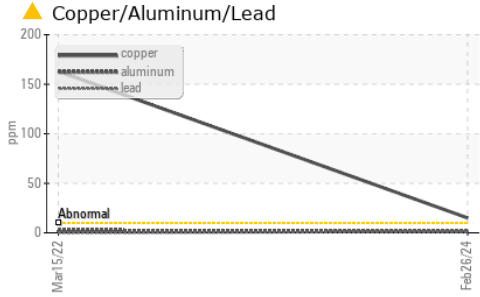
method	limit/base	current	history1	history2	
Sodium	ppm	ASTM D6130	470	548	---
Potassium	ppm	ASTM D6130	4304	1893	---

SCALE POTENTIAL

method	limit/base	current	history1	history2	
Calcium	ppm	ASTM D6130	<1	<1	---
Magnesium	ppm	ASTM D6130	0	<1	---

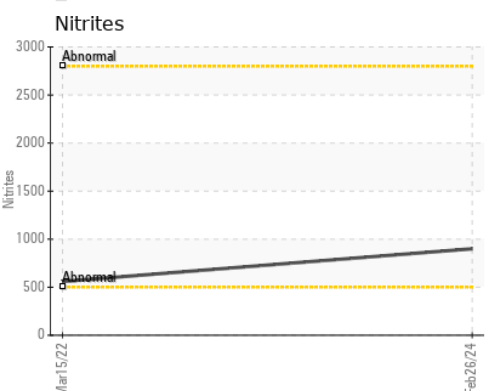
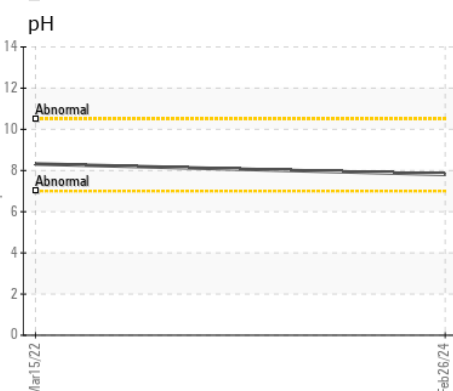
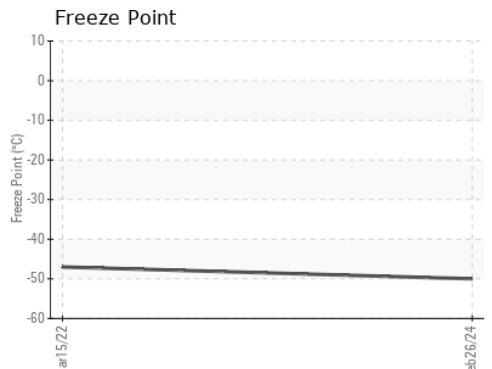
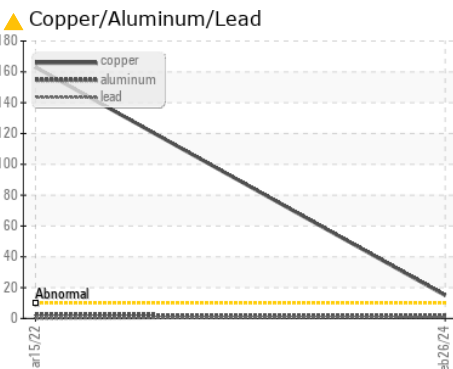
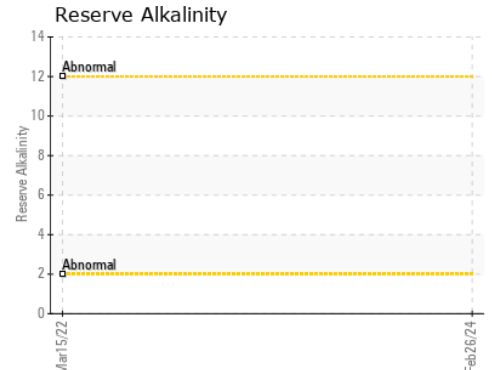
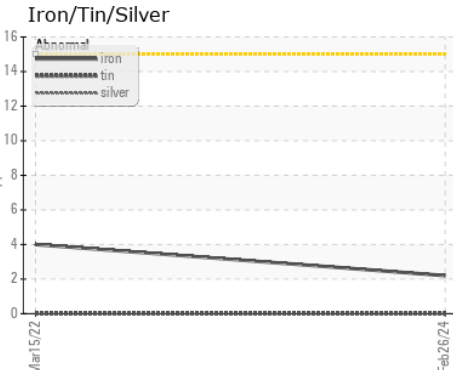


COOLANT REPORT



VISUAL	method	limit/base	current	history1	history2
Coolant Color	*Visual		Orange	Yellow	---
Coolant Appearance	*Visual	Clear	normal	normal	---
Color					no image
Bottom					no image

GRAPHS



Certificate L2367

Laboratory : WearCheck USA - 501 Madison Ave., Cary, NC 27513
Sample No. : NX014475 **Received** : 19 Mar 2024
Lab Number : 06123299 **Tested** : 20 Mar 2024
Unique Number : 10937450 **Diagnosed** : 22 Mar 2024 - Jonathan Hester
Test Package : COOL- (Additional Tests: BoilingPoint, COOL, GlycolType, ICP)

NORDEX USA - Chicago
 300 SOUTH WACKER DRIVE, SUITE 1500
 CHICAGO, IL
 US 60606
 Contact: DEVIN LINEHAN
 DLinehan@nordex-online.com
 T: (312)386-4124
 F: (312)386-7102

To discuss this sample report, contact Customer Service at 1-800-237-1369.

* - Denotes test methods that are outside of the ISO 17025 scope of accreditation.

Statements of conformity to specifications are based on the simple acceptance decision rule (JCGM 106:2012)