



FUEL REPORT

Sample Rating Trend



ISO



Machine Id
SPEC OPS

Component
Diesel Fuel

Fluid
DIESEL FUEL No. 2 (--- GAL)

DIAGNOSIS

Recommendation

We advise that you filter this fluid before use. All laboratory tests indicate that this sample meets specifications for No.2 low-sulfur diesel fuel.

Corrosion

All metal levels are normal indicating no corrosion in the system.

Contaminants

There is a high amount of particulates present in the fuel. There is no bacteria or fungus (yeast and/or mold) indicated in the sample. The water content is negligible.

Fuel Condition

Sulfur value derived by ASTM D5453 method for ULSD validation.

SAMPLE INFORMATION		method	limit/base	current	history1	history2
Sample Number	Client Info			WC0882482	---	---
Sample Date	Client Info			23 Jan 2024	---	---
Machine Age	hrs	Client Info		0	---	---
Sample Status				ABNORMAL	---	---

PHYSICAL PROPERTIES		method	limit/base	current	history1	history2
Fuel Color	text	*Visual Screen		Red	---	---
ASTM Color	scalar	*ASTM D1500		L4.0	---	---
Visc @ 40°C	cSt	ASTM D445	4.1	2.56	---	---
Pensky-Martens Flash Point	°C	*PMCC Calculated		60.5	---	---
Cloud Point	°C	ASTM D5771		-11	---	---
Pour Point	°C	ASTM D5950		-34	---	---

SULFUR CONTENT		method	limit/base	current	history1	history2
Sulfur	ppm	ASTM D5185m		182	---	---
Sulfur (UVF)	ppm	ASTM D5453		218	---	---

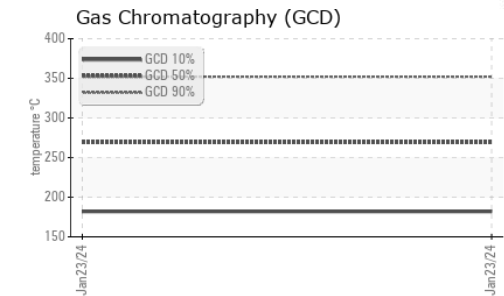
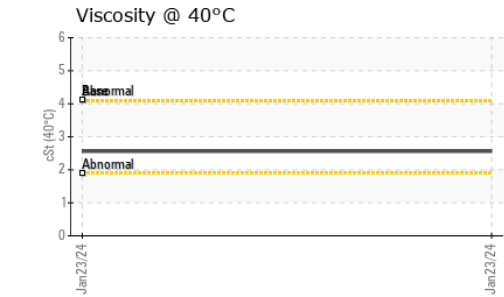
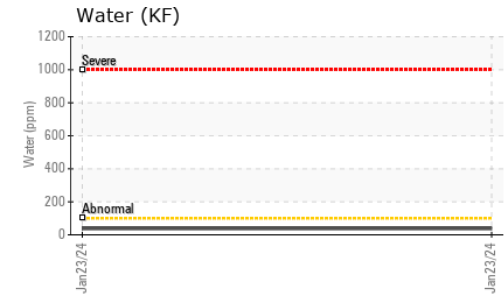
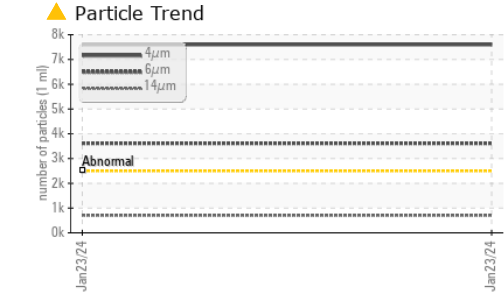
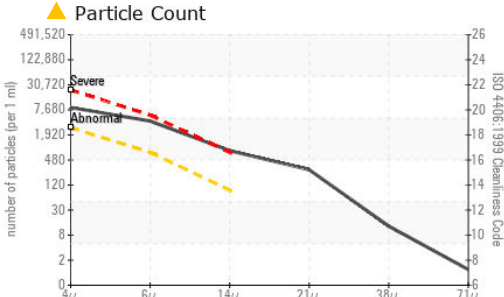
DISTILLATION		method	limit/base	current	history1	history2
Initial Boiling Point	°C	ASTM D86		171	---	---
5% Distillation Point	°C	ASTM D86		194	---	---
10% Distill Point	°C	ASTM D86		205	---	---
15% Distillation Point	°C	ASTM D86		213	---	---
20% Distill Point	°C	ASTM D86		222	---	---
30% Distill Point	°C	ASTM D86		238	---	---
40% Distill Point	°C	ASTM D86		252	---	---
50% Distill Point	°C	ASTM D86		266	---	---
60% Distill Point	°C	ASTM D86		280	---	---
70% Distill Point	°C	ASTM D86		294	---	---
80% Distill Point	°C	ASTM D86		309	---	---
85% Distillation Point	°C	ASTM D86		319	---	---
90% Distill Point	°C	ASTM D86		330	---	---
95% Distillation Point	°C	ASTM D86		345	---	---
Final Boiling Point	°C	ASTM D86		359	---	---

IGNITION QUALITY		method	limit/base	current	history1	history2
API Gravity		ASTM D7777		35	---	---
Cetane Index		ASTM D4737	<40.0	47	---	---

CONTAMINANTS		method	limit/base	current	history1	history2
Silicon	ppm	ASTM D5185m	<1.0	<1	---	---
Sodium	ppm	ASTM D5185m	<0.1	0	---	---
Potassium	ppm	ASTM D5185m	<0.1	<1	---	---
Water	%	ASTM D6304	<0.05	0.003	---	---
ppm Water	ppm	ASTM D6304	<500	38	---	---
% Gasoline	%	*In-House	<0.50	0.0	---	---
% Biodiesel	%	*In-House	<20.0	1.0	---	---



FUEL REPORT

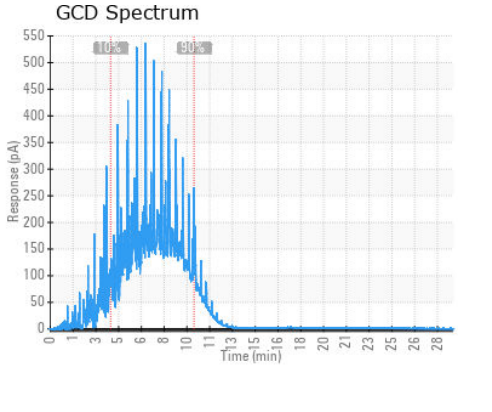
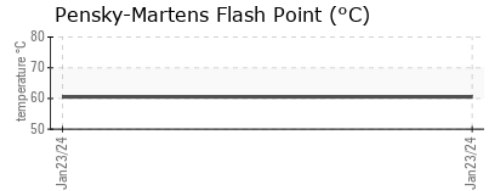
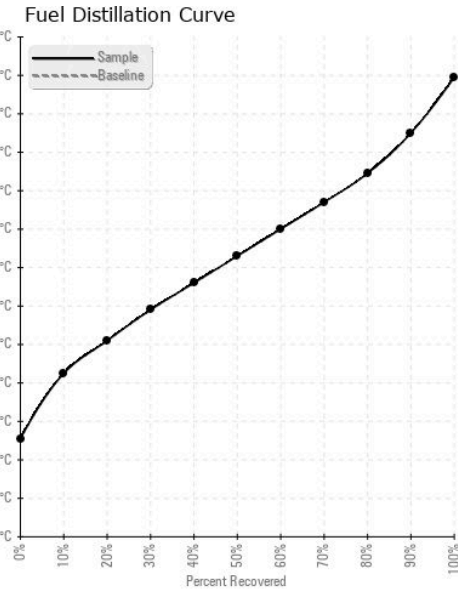


FLUID CLEANLINESS	method	limit/base	current	history1	history2
Particles >4µm	ASTM D7647	>2500	▲ 7600	---	---
Particles >6µm	ASTM D7647	>640	▲ 3614	---	---
Particles >14µm	ASTM D7647	>80	▲ 703	---	---
Particles >21µm	ASTM D7647	>20	▲ 246	---	---
Particles >38µm	ASTM D7647	>4	▲ 11	---	---
Particles >71µm	ASTM D7647	>3	1	---	---
Oil Cleanliness	ISO 4406 (c)	>18/16/13	▲ 20/19/17	---	---

HEAVY METALS	method	limit/base	current	history1	history2
Aluminum	ppm	ASTM D5185m	<0.1	2	---
Nickel	ppm	ASTM D5185m	<0.1	<1	---
Lead	ppm	ASTM D5185m	<0.1	<1	---
Vanadium	ppm	ASTM D5185m	<0.1	<1	---
Iron	ppm	ASTM D5185m	<0.1	<1	---
Calcium	ppm	ASTM D5185m	<0.1	3	---
Magnesium	ppm	ASTM D5185m	<0.1	0	---
Phosphorus	ppm	ASTM D5185m	<0.1	0	---
Zinc	ppm	ASTM D5185m	<0.1	0	---

SAMPLE IMAGES	method	limit/base	current	history1	history2
Color					
Bottom					

GRAPHS



Laboratory : WearCheck USA - 501 Madison Ave., Cary, NC 27513
Sample No. : WC0882482
Lab Number : 06124472
Unique Number : 10938623
Test Package : FUEL (Additional Tests: CldPt, Color-ASTM, Fuel, GC-PercFuel, PourPt, PrtCont, RSQ

NEW ENGLAND GENERATOR
 18 COLUMBIA RD
 PEMBROKE, MA
 US 02359
 Contact: SCOTT MATTHEWS
 scott@neregulator.com
 T: (781)294-8300
 F:

To discuss this sample report, contact Customer Service at 1-800-237-1369.
 * - Denotes test methods that are outside of the ISO 17025 scope of accreditation.
 Statements of conformity to specifications are based on the simple acceptance decision rule (JCGM 106:2012)