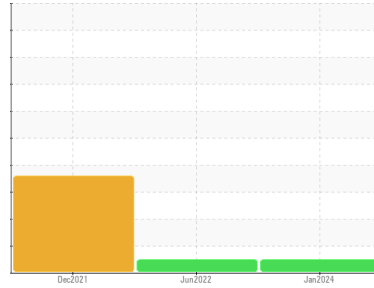




# OIL ANALYSIS REPORT

Sample Rating Trend



**NORMAL**



Area

**[2293]**

Machine Id

**ATLAS COPCO API829957 - ELEVATED INDUSTRIAL SOLUTIONS**

Component

**Compressor**

Fluid

**ATLAS COPCO ROTO XTEND (4 GAL)**

## DIAGNOSIS

### Recommendation

Resample at the next service interval to monitor.

### Wear

All component wear rates are normal.

### Contamination

There is no indication of any contamination in the oil.

### Fluid Condition

The AN level is acceptable for this fluid. The condition of the oil is suitable for further service.

## SAMPLE INFORMATION

	method	limit/base	current	history1	history2
Sample Number	Client Info		<b>WC06124970</b>	WC0679599	WC0601300
Sample Date	Client Info		<b>25 Jan 2024</b>	15 Jun 2022	29 Dec 2021
Machine Age	hrs	Client Info	<b>30984</b>	2070	18128
Oil Age	hrs	Client Info	<b>4000</b>	2942	1385
Oil Changed	Client Info		<b>N/A</b>	Not Changd	Changed
Sample Status			<b>NORMAL</b>	NORMAL	ABNORMAL

## CONTAMINATION

	method	limit/base	current	history1	history2
Water	WC Method	>0.1	<b>NEG</b>	NEG	NEG

## WEAR METALS

	method	limit/base	current	history1	history2
Iron	ppm	ASTM D5185m >50	<b>0</b>	0	<1
Chromium	ppm	ASTM D5185m >5	<b>&lt;1</b>	0	0
Nickel	ppm	ASTM D5185m	<b>0</b>	0	0
Titanium	ppm	ASTM D5185m	<b>0</b>	0	0
Silver	ppm	ASTM D5185m	<b>0</b>	0	0
Aluminum	ppm	ASTM D5185m >15	<b>0</b>	0	0
Lead	ppm	ASTM D5185m >65	<b>0</b>	<1	0
Copper	ppm	ASTM D5185m >65	<b>2</b>	8	5
Tin	ppm	ASTM D5185m >10	<b>0</b>	0	<1
Antimony	ppm	ASTM D5185m	<b>---</b>	---	<1
Vanadium	ppm	ASTM D5185m	<b>0</b>	0	0
Cadmium	ppm	ASTM D5185m	<b>0</b>	0	0

## ADDITIVES

	method	limit/base	current	history1	history2
Boron	ppm	ASTM D5185m	<b>0</b>	0	<1
Barium	ppm	ASTM D5185m	<b>0</b>	2	0
Molybdenum	ppm	ASTM D5185m	<b>&lt;1</b>	0	<1
Manganese	ppm	ASTM D5185m	<b>&lt;1</b>	0	0
Magnesium	ppm	ASTM D5185m	<b>0</b>	<1	0
Calcium	ppm	ASTM D5185m	<b>0</b>	0	<1
Phosphorus	ppm	ASTM D5185m	<b>20</b>	36	46
Zinc	ppm	ASTM D5185m	<b>56</b>	60	92
Sulfur	ppm	ASTM D5185m	<b>16</b>	145	131

## CONTAMINANTS

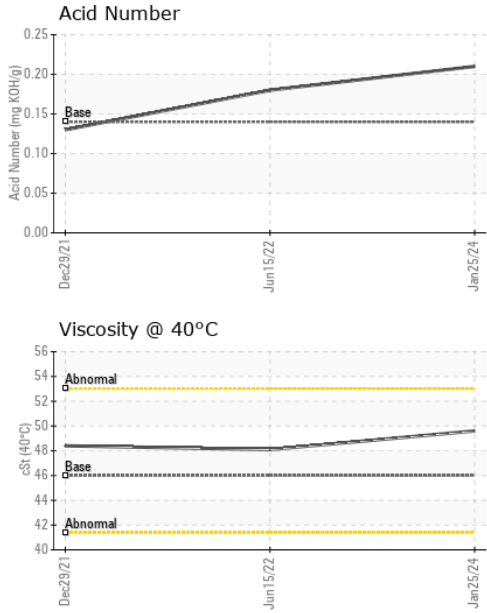
	method	limit/base	current	history1	history2
Silicon	ppm	ASTM D5185m >35	<b>&lt;1</b>	3	2
Sodium	ppm	ASTM D5185m	<b>5</b>	0	2
Potassium	ppm	ASTM D5185m >20	<b>0</b>	1	0

## FLUID DEGRADATION

	method	limit/base	current	history1	history2
Acid Number (AN)	mg KOH/g	ASTM D8045 0.14	<b>0.21</b>	0.18	0.13



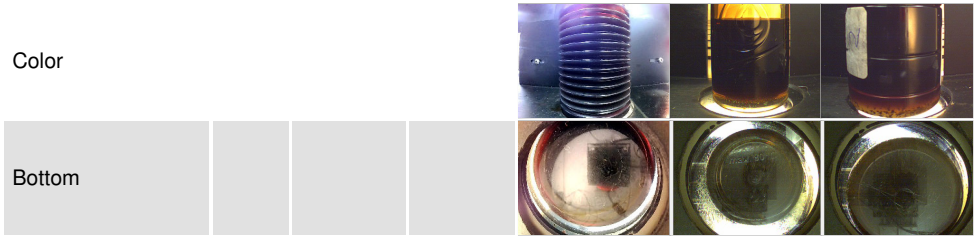
# OIL ANALYSIS REPORT



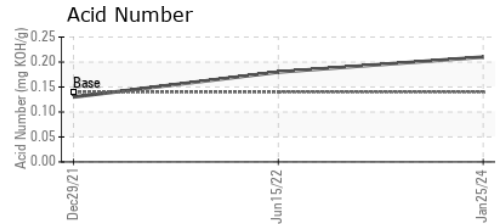
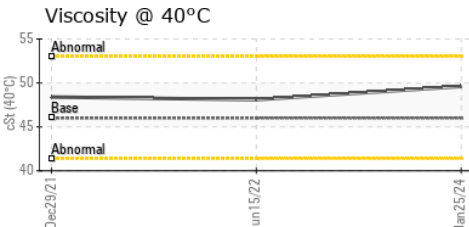
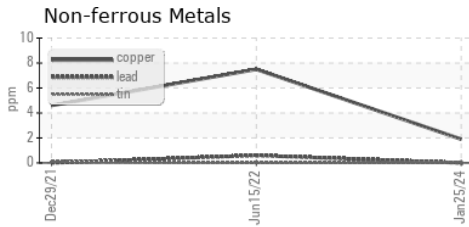
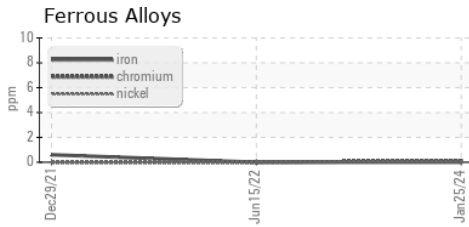
VISUAL	method	limit/base	current	history1	history2	
White Metal	scalar	*Visual	NONE	NONE	NONE	
Yellow Metal	scalar	*Visual	NONE	NONE	NONE	
Precipitate	scalar	*Visual	NONE	NONE	NONE	
Silt	scalar	*Visual	NONE	NONE	NONE	
Debris	scalar	*Visual	NONE	LIGHT	▲ MODER	
Sand/Dirt	scalar	*Visual	NONE	NONE	NONE	
Appearance	scalar	*Visual	NORML	NORML	NORML	
Odor	scalar	*Visual	NORML	NORML	NORML	
Emulsified Water	scalar	*Visual	>0.1	NEG	0.2%	0.2%
Free Water	scalar	*Visual		NEG	▲ 2.0	

FLUID PROPERTIES	method	limit/base	current	history1	history2
Visc @ 40°C	cSt	ASTM D445 46	<b>49.6</b>	48.1	48.4

SAMPLE IMAGES	method	limit/base	current	history1	history2
---------------	--------	------------	---------	----------	----------



## GRAPHS



Certificate L2367

**Laboratory** : WearCheck USA - 501 Madison Ave., Cary, NC 27513  
**Sample No.** : WC06124970  
**Lab Number** : 06124970  
**Unique Number** : 10939121  
**Test Package** : IND 2  
**Received** : 21 Mar 2024  
**Tested** : 22 Mar 2024  
**Diagnosed** : 24 Mar 2024 - Don Baldrige

**ELEVATED INDUSTRIAL SOLUTIONS - EIS**  
 302 HUGHES ST  
 FOUNTAIN INN, SC  
 US 29644  
 Contact: DARRIN WARD  
 dward@elevatedindustrial.com

To discuss this sample report, contact Customer Service at 1-800-237-1369.  
 \* - Denotes test methods that are outside of the ISO 17025 scope of accreditation.  
 Statements of conformity to specifications are based on the simple acceptance decision rule (JCGM 106:2012)