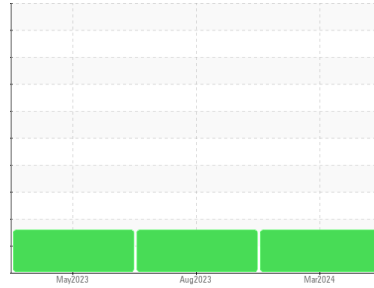


Area
PALASYN 45
Machine Id
SULLIVAN PALATEK 20AE000889 - P66 BAYTOWN
Component
Compressor



DIAGNOSIS

● **Recommendation**

We advise that you follow the water drain-off procedure for this component. The filter change at the time of sampling has been noted. We recommend an early resample to monitor this condition.

Wear

All component wear rates are normal.

● **Contamination**

Moderate concentration of visible dirt/debris present in the oil. There is a moderate amount of visible silt present in the sample. Excessive free water present.

Fluid Condition

The AN level is acceptable for this fluid.

SAMPLE INFORMATION		method	limit/base	current	history1	history2
Sample Number	Client Info			UCS06124986	UCS05940261	UCS05856746
Sample Date	Client Info			13 Mar 2024	15 Aug 2023	16 May 2023
Machine Age	hrs	Client Info		9691	7834	0
Oil Age	hrs	Client Info		0	4193	0
Oil Changed	Client Info			Not Changed	Not Changd	Changed
Sample Status				ATTENTION	ATTENTION	ATTENTION

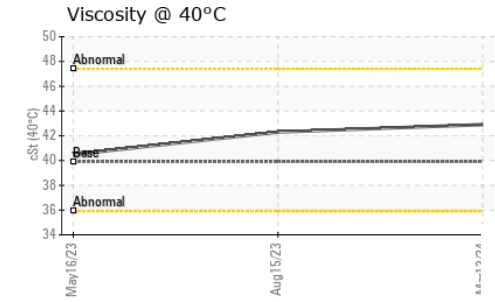
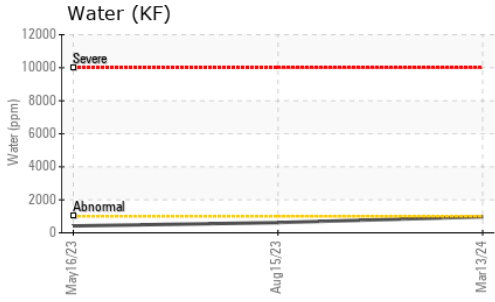
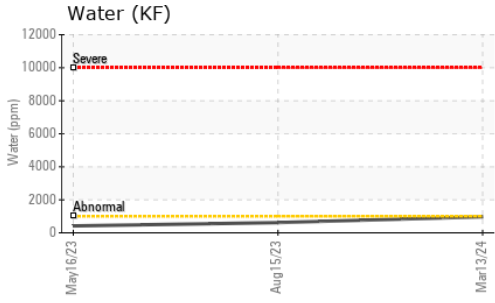
WEAR METALS		method	limit/base	current	history1	history2
Iron	ppm	ASTM D5185m	>50	9	8	2
Chromium	ppm	ASTM D5185m	>10	<1	0	0
Nickel	ppm	ASTM D5185m		0	0	0
Titanium	ppm	ASTM D5185m		<1	0	0
Silver	ppm	ASTM D5185m		0	0	0
Aluminum	ppm	ASTM D5185m	>25	3	<1	<1
Lead	ppm	ASTM D5185m	>25	<1	0	0
Copper	ppm	ASTM D5185m	>50	2	2	<1
Tin	ppm	ASTM D5185m	>15	<1	<1	0
Vanadium	ppm	ASTM D5185m		<1	<1	0
Cadmium	ppm	ASTM D5185m		0	<1	0

ADDITIVES		method	limit/base	current	history1	history2
Boron	ppm	ASTM D5185m	0.0	0	0	0
Barium	ppm	ASTM D5185m	0.0	2	0	0
Molybdenum	ppm	ASTM D5185m	0	<1	0	0
Manganese	ppm	ASTM D5185m	0	0	<1	<1
Magnesium	ppm	ASTM D5185m	0.0	<1	3	0
Calcium	ppm	ASTM D5185m	0.0	4	0	<1
Phosphorus	ppm	ASTM D5185m	966	438	481	528
Zinc	ppm	ASTM D5185m	0	8	<1	3
Sulfur	ppm	ASTM D5185m	1309	1012	1147	302

CONTAMINANTS		method	limit/base	current	history1	history2
Silicon	ppm	ASTM D5185m	>25	4	2	<1
Sodium	ppm	ASTM D5185m		0	<1	2
Potassium	ppm	ASTM D5185m	>20	1	1	0
Water	%	ASTM D6304	>0.1	0.097	0.062	0.042
ppm Water	ppm	ASTM D6304	>1000	970	620	420

FLUID DEGRADATION		method	limit/base	current	history1	history2
Acid Number (AN)	mg KOH/g	ASTM D8045	0.172	0.12	0.11	0.19

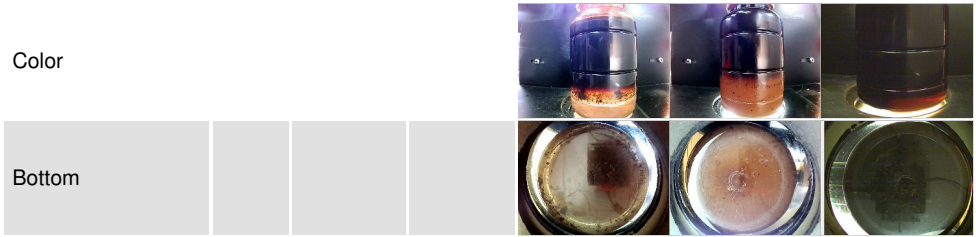
OIL ANALYSIS REPORT



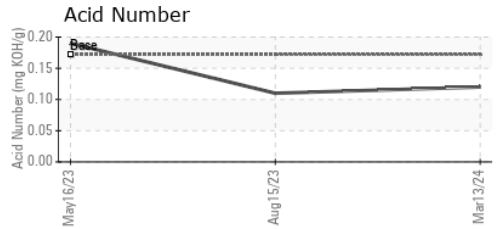
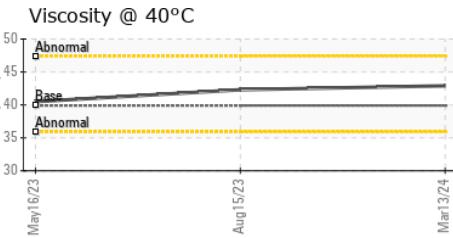
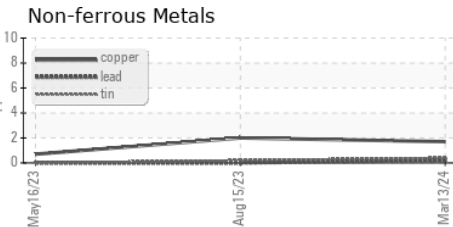
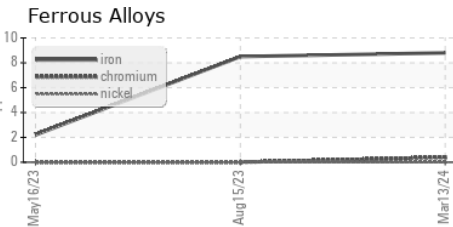
VISUAL	method	limit/base	current	history1	history2
White Metal	scalar	*Visual	NONE	NONE	NONE
Yellow Metal	scalar	*Visual	NONE	NONE	NONE
Precipitate	scalar	*Visual	NONE	NONE	NONE
Silt	scalar	*Visual	NONE	MODER	NONE
Debris	scalar	*Visual	NONE	MODER	MODER
Sand/Dirt	scalar	*Visual	NONE	NONE	NONE
Appearance	scalar	*Visual	NORML	NORML	NORML
Odor	scalar	*Visual	NORML	NORML	NORML
Emulsified Water	scalar	*Visual	>0.1	0.2%	0.2%
Free Water	scalar	*Visual	>10%	>10%	1.0

FLUID PROPERTIES	method	limit/base	current	history1	history2	
Visc @ 40°C	cSt	ASTM D445	39.9	42.9	42.3	40.5

SAMPLE IMAGES	method	limit/base	current	history1	history2
---------------	--------	------------	---------	----------	----------



GRAPHS



Certificate L2367

Laboratory : WearCheck USA - 501 Madison Ave., Cary, NC 27513
Sample No. : UCS06124986 **Received** : 21 Mar 2024
Lab Number : **06124986** **Tested** : 25 Mar 2024
Unique Number : 10939137 **Diagnosed** : 25 Mar 2024 - Don Baldrige
Test Package : IND 2 (Additional Tests: KF)

AIR SPECIALTY & EQUIPMENT COMPANY
 2814 EAST P ST
 DEER PARK, TX
 US 77536
 Contact: AARON RIOS
 oilsamples@airspecialty.com
 T: (281)884-2335
 F:

To discuss this sample report, contact Customer Service at 1-800-237-1369.

* - Denotes test methods that are outside of the ISO 17025 scope of accreditation.

Statements of conformity to specifications are based on the simple acceptance decision rule (JCGM 106:2012)