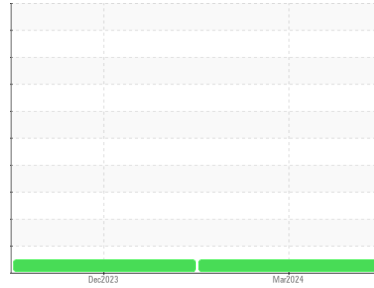


Area
PALEXTRA 44
Machine Id
SULLIVAN PALATEK 19GE000255 - AC205
Component
Compressor



DIAGNOSIS

Recommendation

Resample at the next service interval to monitor.

Wear

All component wear rates are normal.

Contamination

There is no indication of any contamination in the oil.

Fluid Condition

The AN level is acceptable for this fluid. The condition of the oil is suitable for further service.

SAMPLE INFORMATION		method	limit/base	current	history1	history2
Sample Number	Client Info			UCS06130770	UCS06074843	---
Sample Date	Client Info			18 Mar 2024	27 Dec 2023	---
Machine Age	hrs	Client Info		22765	21703	---
Oil Age	hrs	Client Info		1062	7528	---
Oil Changed	Client Info			Not Chngd	Changed	---
Sample Status				NORMAL	NORMAL	---

CONTAMINATION		method	limit/base	current	history1	history2
Water	WC Method		>0.1	NEG	NEG	---

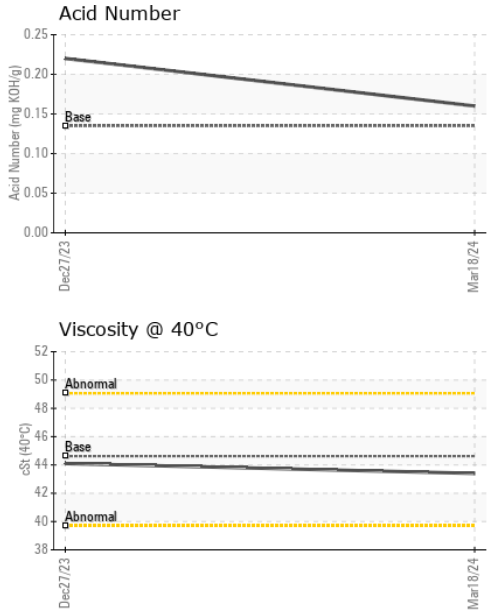
WEAR METALS		method	limit/base	current	history1	history2
Iron	ppm	ASTM D5185m	>50	0	0	---
Chromium	ppm	ASTM D5185m	>10	0	0	---
Nickel	ppm	ASTM D5185m		0	<1	---
Titanium	ppm	ASTM D5185m		0	0	---
Silver	ppm	ASTM D5185m		0	0	---
Aluminum	ppm	ASTM D5185m	>25	1	0	---
Lead	ppm	ASTM D5185m	>25	0	0	---
Copper	ppm	ASTM D5185m	>50	<1	0	---
Tin	ppm	ASTM D5185m	>15	0	0	---
Vanadium	ppm	ASTM D5185m		0	0	---
Cadmium	ppm	ASTM D5185m		0	0	---

ADDITIVES		method	limit/base	current	history1	history2
Boron	ppm	ASTM D5185m	0	0	0	---
Barium	ppm	ASTM D5185m	0.3	0	1	---
Molybdenum	ppm	ASTM D5185m	0	0	0	---
Manganese	ppm	ASTM D5185m	0.3	0	<1	---
Magnesium	ppm	ASTM D5185m	0.4	<1	<1	---
Calcium	ppm	ASTM D5185m	0	3	<1	---
Phosphorus	ppm	ASTM D5185m	689	577	492	---
Zinc	ppm	ASTM D5185m	0	0	0	---
Sulfur	ppm	ASTM D5185m	1237	1052	565	---

CONTAMINANTS		method	limit/base	current	history1	history2
Silicon	ppm	ASTM D5185m	>25	5	9	---
Sodium	ppm	ASTM D5185m		0	<1	---
Potassium	ppm	ASTM D5185m	>20	<1	0	---

FLUID DEGRADATION		method	limit/base	current	history1	history2
Acid Number (AN)	mg KOH/g	ASTM D8045	0.135	0.16	0.22	---

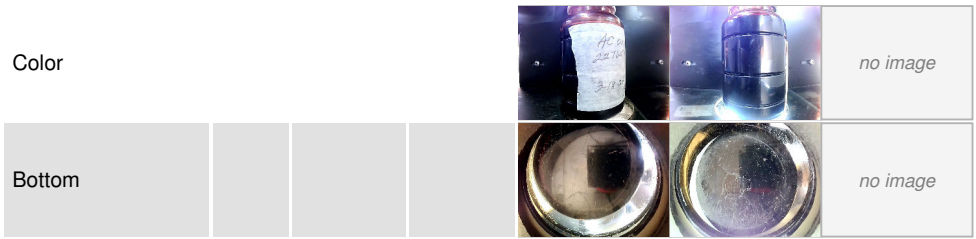
OIL ANALYSIS REPORT



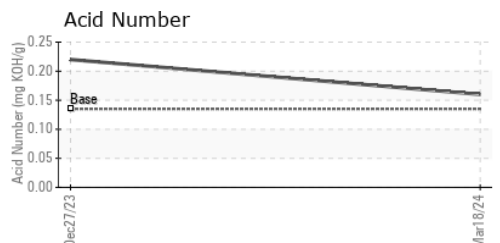
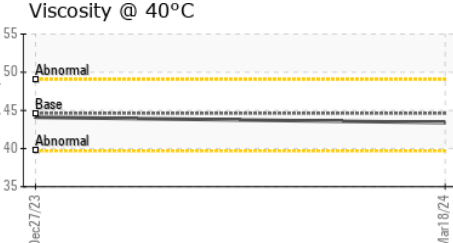
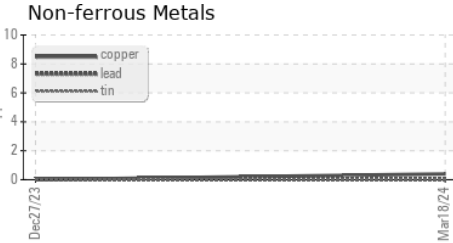
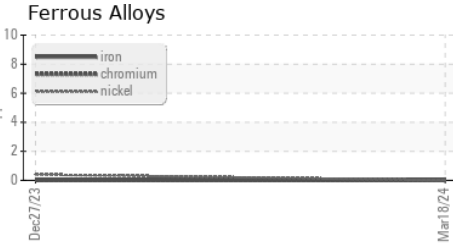
VISUAL	method	limit/base	current	history1	history2
White Metal	scalar	*Visual	NONE	NONE	---
Yellow Metal	scalar	*Visual	NONE	NONE	---
Precipitate	scalar	*Visual	NONE	NONE	---
Silt	scalar	*Visual	NONE	NONE	---
Debris	scalar	*Visual	NONE	LIGHT	MODER
Sand/Dirt	scalar	*Visual	NONE	NONE	---
Appearance	scalar	*Visual	NORML	NORML	NORML
Odor	scalar	*Visual	NORML	NORML	NORML
Emulsified Water	scalar	*Visual	>0.1	NEG	NEG
Free Water	scalar	*Visual		NEG	NEG

FLUID PROPERTIES	method	limit/base	current	history1	history2
Visc @ 40°C	cSt	ASTM D445	44.62	43.4	44.1

SAMPLE IMAGES	method	limit/base	current	history1	history2
---------------	--------	------------	---------	----------	----------



GRAPHS



Laboratory : WearCheck USA - 501 Madison Ave., Cary, NC 27513
Sample No. : UCS06130770 **Received** : 27 Mar 2024
Lab Number : **06130770** **Tested** : 28 Mar 2024
Unique Number : 10950235 **Diagnosed** : 30 Mar 2024 - Don Baldrige
Test Package : IND 2

TRAIL KING INDUSTRIES
 MITCHELL, SD
 US 57301
 Contact: DAN ANDERSON
 DANDERSON@TRAILKING.COM
 T:
 F:

To discuss this sample report, contact Customer Service at 1-800-237-1369.
 * - Denotes test methods that are outside of the ISO 17025 scope of accreditation.
 Statements of conformity to specifications are based on the simple acceptance decision rule (JCGM 106:2012)