



OIL ANALYSIS REPORT

Sample Rating Trend

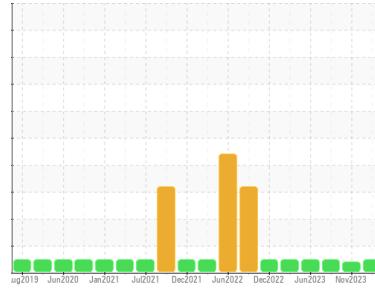
NORMAL



Machine Id
WLLR_U2120 WLLR_U2120_M2120

Component
Drive End Bearing

Fluid
ROYAL PURPLE SYNFILM GT 32 (--- GAL)



DIAGNOSIS

Recommendation

Resample at the next service interval to monitor.

Wear

All component wear rates are normal.

Contamination

The water content is negligible. There is no indication of any contamination in the oil.

Fluid Condition

The AN level is acceptable for this fluid. The condition of the oil is suitable for further service.

SAMPLE INFORMATION

| method | limit/base | current | history1 | history2 |
|---------------|-------------|--------------------|-------------|-------------|
| Sample Number | Client Info | RP0029159 | RP0029189 | RP0029147 |
| Sample Date | Client Info | 22 Mar 2024 | 29 Nov 2023 | 28 Sep 2023 |
| Machine Age | hrs | Client Info | 0 | 0 |
| Oil Age | hrs | Client Info | 0 | 0 |
| Oil Changed | Client Info | N/A | N/A | N/A |
| Sample Status | | NORMAL | ABNORMAL | NORMAL |

WEAR METALS

| method | limit/base | current | history1 | history2 | |
|----------|------------|-----------------|--------------|----------|----|
| Iron | ppm | ASTM D5185m >20 | <1 | 0 | 0 |
| Chromium | ppm | ASTM D5185m >20 | <1 | 0 | 0 |
| Nickel | ppm | ASTM D5185m >20 | 0 | <1 | 0 |
| Titanium | ppm | ASTM D5185m | <1 | 0 | 0 |
| Silver | ppm | ASTM D5185m | <1 | 0 | 0 |
| Aluminum | ppm | ASTM D5185m >20 | 2 | <1 | 2 |
| Lead | ppm | ASTM D5185m >20 | <1 | 0 | 0 |
| Copper | ppm | ASTM D5185m >20 | <1 | <1 | <1 |
| Tin | ppm | ASTM D5185m >20 | 1 | <1 | <1 |
| Vanadium | ppm | ASTM D5185m | <1 | 0 | 0 |
| Cadmium | ppm | ASTM D5185m | <1 | 0 | <1 |

ADDITIVES

| method | limit/base | current | history1 | history2 | |
|------------|------------|-------------|--------------|----------|----|
| Boron | ppm | ASTM D5185m | 0 | 0 | 0 |
| Barium | ppm | ASTM D5185m | 0 | 0 | 0 |
| Molybdenum | ppm | ASTM D5185m | <1 | 0 | 0 |
| Manganese | ppm | ASTM D5185m | <1 | <1 | <1 |
| Magnesium | ppm | ASTM D5185m | 77 | 75 | 41 |
| Calcium | ppm | ASTM D5185m | 4 | 1 | 4 |
| Phosphorus | ppm | ASTM D5185m | <1 | 3 | 4 |
| Zinc | ppm | ASTM D5185m | 0 | 0 | 8 |

CONTAMINANTS

| method | limit/base | current | history1 | history2 | |
|-----------|------------|-----------------|--------------|----------|-------|
| Silicon | ppm | ASTM D5185m >15 | 1 | <1 | <1 |
| Sodium | ppm | ASTM D5185m | 0 | 1 | 1 |
| Potassium | ppm | ASTM D5185m >20 | 1 | 1 | <1 |
| Water | % | ASTM D6304 >2 | 0.029 | 0.073 | 0.126 |
| ppm Water | ppm | ASTM D6304 | 290 | 736 | 1260 |

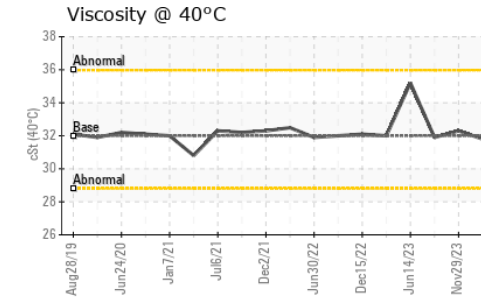
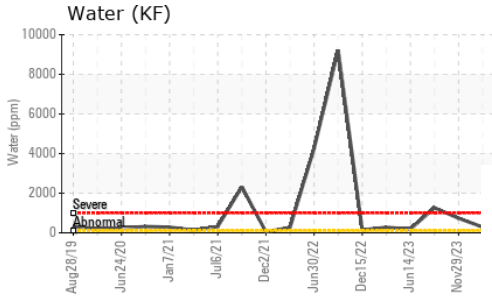
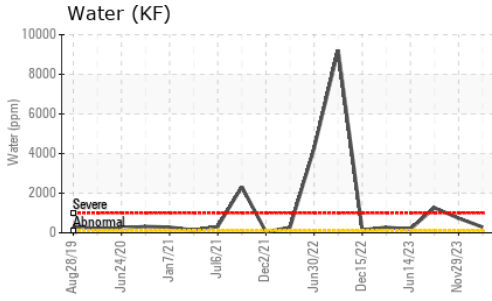
FLUID DEGRADATION

| method | limit/base | current | history1 | history2 | |
|------------------|------------|------------|-------------|----------|------|
| Acid Number (AN) | mg KOH/g | ASTM D8045 | 0.43 | 0.37 | 0.33 |

VISUAL

| method | limit/base | current | history1 | history2 | |
|------------------|------------|---------------|--------------|----------|------------------|
| White Metal | scalar | *Visual NONE | NONE | NONE | NONE |
| Yellow Metal | scalar | *Visual NONE | NONE | NONE | NONE |
| Precipitate | scalar | *Visual NONE | NONE | NONE | NONE |
| Silt | scalar | *Visual NONE | NONE | NONE | NONE |
| Debris | scalar | *Visual NONE | LIGHT | ▲ MODER | NONE |
| Sand/Dirt | scalar | *Visual NONE | NONE | NONE | NONE |
| Appearance | scalar | *Visual NORML | NORML | NORML | NORML |
| Odor | scalar | *Visual NORML | NORML | NORML | NORML |
| Emulsified Water | scalar | *Visual >2 | NEG | 0.2% | 0.2% |
| Free Water | scalar | *Visual | NEG | Submitt | By: EDDIE BIDDLE |

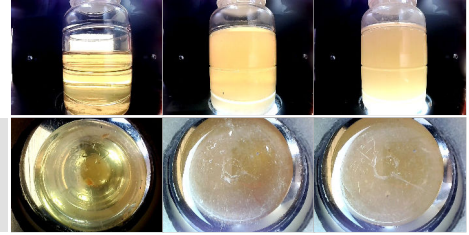
OIL ANALYSIS REPORT



| FLUID PROPERTIES | | method | limit/base | current | history1 | history2 |
|------------------|-----|-----------|------------|-------------|----------|----------|
| Visc @ 40°C | cSt | ASTM D445 | 32 | 31.8 | 32.3 | 31.9 |

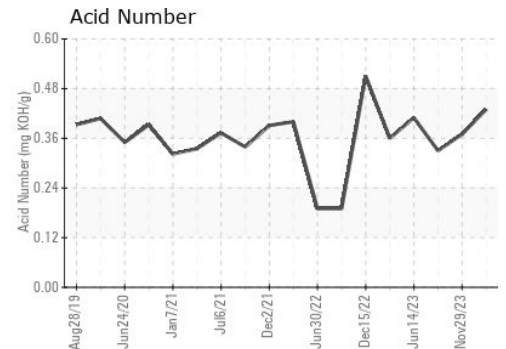
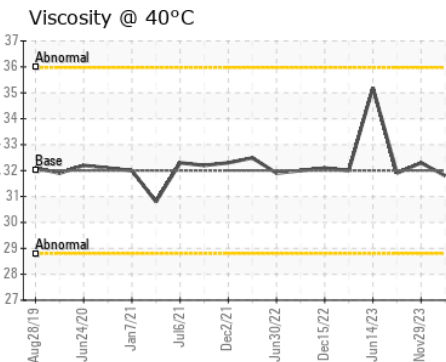
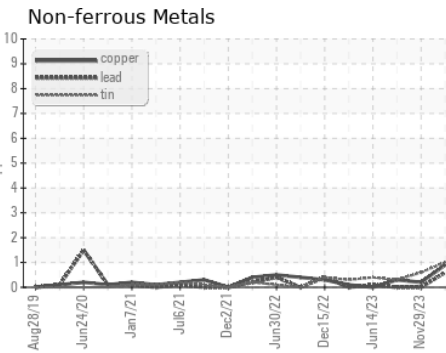
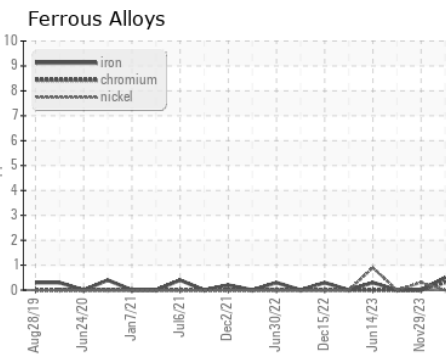
| SAMPLE IMAGES | | method | limit/base | current | history1 | history2 |
|---------------|--|--------|------------|---------|----------|----------|
|---------------|--|--------|------------|---------|----------|----------|

Color



Bottom

GRAPHS



Certificate L2367

Laboratory : WearCheck USA - 501 Madison Ave., Cary, NC 27513
Sample No. : RP0029159
Lab Number : **06131439**
Unique Number : 10950904
Test Package : PLANT
Received : 27 Mar 2024
Tested : 01 Apr 2024
Diagnosed : 01 Apr 2024 - Don Baldrige

ENERGY TRANSFER - WILLARD
 1309 SOUTH CONWELL ST
 WILLARD, OH
 US 44890
 Contact: EDDIE RIDDLE

To discuss this sample report, contact Customer Service at 1-800-237-1369.

* - Denotes test methods that are outside of the ISO 17025 scope of accreditation.

Statements of conformity to specifications are based on the simple acceptance decision rule (JCGM 106:2012)

T: (419)467-7972

F: