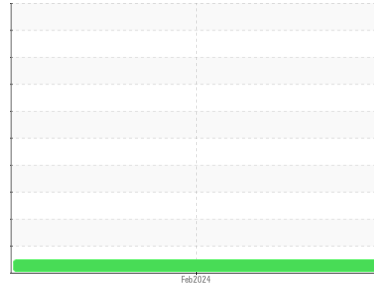


OIL ANALYSIS REPORT

Sample Rating Trend

NORMAL



Area

RAGE SUL 8000

Machine Id

SULLAIR 201710110056 - DUNCAN AVIATION-NEW POINT HANGAR SOUTH

Component

Compressor

DIAGNOSIS

Recommendation

Resample at the next service interval to monitor.

Wear

All component wear rates are normal.

Contamination

There is no indication of any contamination in the oil.

Fluid Condition

The AN level is acceptable for this fluid. The condition of the oil is suitable for further service.

SAMPLE INFORMATION method limit/base current history1 history2

Sample Number	Client Info	UCS06131462	---	---
Sample Date	Client Info	16 Feb 2024	---	---
Machine Age	hrs	Client Info	18357	---
Oil Age	hrs	Client Info	0	---
Oil Changed	Client Info	Not Chngd	---	---
Sample Status		NORMAL	---	---

CONTAMINATION method limit/base current history1 history2

Water	WC Method	>0.1	NEG	---	---
-------	-----------	------	------------	-----	-----

WEAR METALS method limit/base current history1 history2

Iron	ppm	ASTM D5185m	>50	2	---	---
Chromium	ppm	ASTM D5185m	>10	<1	---	---
Nickel	ppm	ASTM D5185m		<1	---	---
Titanium	ppm	ASTM D5185m		<1	---	---
Silver	ppm	ASTM D5185m		<1	---	---
Aluminum	ppm	ASTM D5185m	>25	2	---	---
Lead	ppm	ASTM D5185m	>25	<1	---	---
Copper	ppm	ASTM D5185m	>50	<1	---	---
Tin	ppm	ASTM D5185m	>15	<1	---	---
Vanadium	ppm	ASTM D5185m		<1	---	---
Cadmium	ppm	ASTM D5185m		<1	---	---

ADDITIVES method limit/base current history1 history2

Boron	ppm	ASTM D5185m		0	---	---
Barium	ppm	ASTM D5185m		317	---	---
Molybdenum	ppm	ASTM D5185m		<1	---	---
Manganese	ppm	ASTM D5185m		<1	---	---
Magnesium	ppm	ASTM D5185m		1	---	---
Calcium	ppm	ASTM D5185m		5	---	---
Phosphorus	ppm	ASTM D5185m	314	8	---	---
Zinc	ppm	ASTM D5185m		10	---	---
Sulfur	ppm	ASTM D5185m	1400	138	---	---

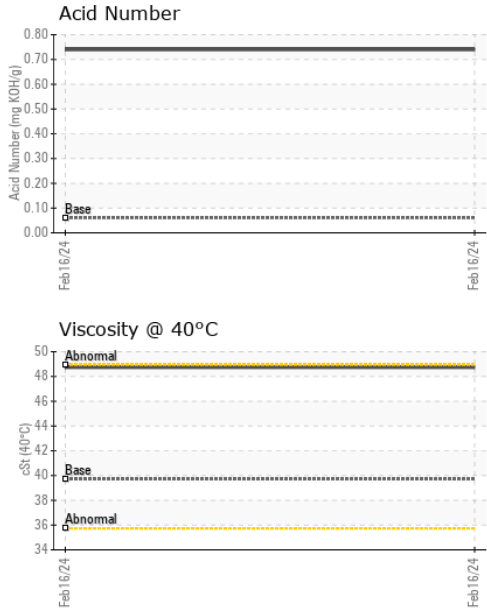
CONTAMINANTS method limit/base current history1 history2

Silicon	ppm	ASTM D5185m	>25	3	---	---
Sodium	ppm	ASTM D5185m		71	---	---
Potassium	ppm	ASTM D5185m	>20	3	---	---

FLUID DEGRADATION method limit/base current history1 history2

Acid Number (AN)	mg KOH/g	ASTM D8045	.06	0.74	---	---
------------------	----------	------------	-----	-------------	-----	-----

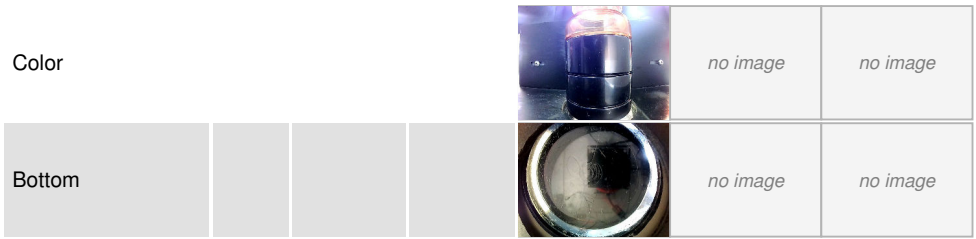
OIL ANALYSIS REPORT



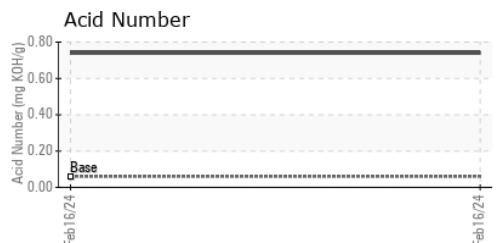
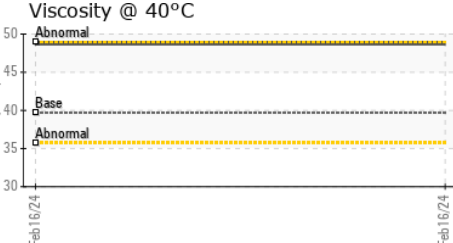
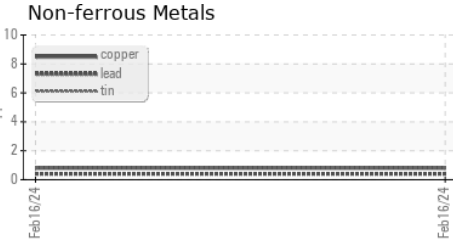
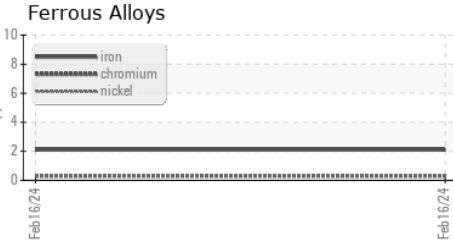
VISUAL	method	limit/base	current	history1	history2	
White Metal	scalar	*Visual	NONE	NONE	---	---
Yellow Metal	scalar	*Visual	NONE	NONE	---	---
Precipitate	scalar	*Visual	NONE	NONE	---	---
Silt	scalar	*Visual	NONE	NONE	---	---
Debris	scalar	*Visual	NONE	NONE	---	---
Sand/Dirt	scalar	*Visual	NONE	NONE	---	---
Appearance	scalar	*Visual	NORML	NORML	---	---
Odor	scalar	*Visual	NORML	NORML	---	---
Emulsified Water	scalar	*Visual	>0.1	NEG	---	---
Free Water	scalar	*Visual		NEG	---	---

FLUID PROPERTIES	method	limit/base	current	history1	history2	
Visc @ 40°C	cSt	ASTM D445	39.7	48.74	---	---

SAMPLE IMAGES	method	limit/base	current	history1	history2
---------------	--------	------------	---------	----------	----------



GRAPHS



Laboratory : WearCheck USA - 501 Madison Ave., Cary, NC 27513
Sample No. : UCS06131462 **Received** : 27 Mar 2024
Lab Number : **06131462** **Tested** : 04 Apr 2024
Unique Number : 10950927 **Diagnosed** : 04 Apr 2024 - Jonathan Hester
Test Package : IND 2

RASMUSSEN AIR & GAS ENERGY
 655 240TH STREET
 WATERLOO, NE
 US 68069
 Contact: CHASE SVOBODA
 chase.svoboda@rage-energy.com
 T: (402)614-9926
 F:

To discuss this sample report, contact Customer Service at 1-800-237-1369.
 * - Denotes test methods that are outside of the ISO 17025 scope of accreditation.
 Statements of conformity to specifications are based on the simple acceptance decision rule (JCGM 106:2012)