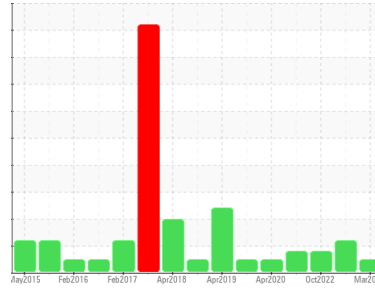




OIL ANALYSIS REPORT

Sample Rating Trend



Machine Id
BLWR-001 DE (S/N 880600)
 Component
Blower
 Fluid
ROYAL PURPLE SYNFILM GT 100 (1 PNT)

DIAGNOSIS

- Recommendation**
Resample at the next service interval to monitor.
- Wear**
All component wear rates are normal.
- Contamination**
There is no indication of any contamination in the oil.
- Fluid Condition**
The AN level is acceptable for this fluid. The condition of the oil is suitable for further service.

SAMPLE INFORMATION

method	limit/base	current	history1	history2
Sample Number	Client Info	RP0033614	RP0021775	RP0028602
Sample Date	Client Info	20 Mar 2024	20 Apr 2023	19 Oct 2022
Machine Age	hrs	0	0	0
Oil Age	hrs	0	0	0
Oil Changed	Client Info	N/A	N/A	N/A
Sample Status		NORMAL	ABNORMAL	ABNORMAL

WEAR METALS

method	limit/base	current	history1	history2
Iron ppm	ASTM D5185m >20	<1	▲ 81	▲ 50
Chromium ppm	ASTM D5185m >20	0	<1	0
Nickel ppm	ASTM D5185m >20	0	0	0
Titanium ppm	ASTM D5185m	0	0	0
Silver ppm	ASTM D5185m	0	0	0
Aluminum ppm	ASTM D5185m >20	<1	<1	4
Lead ppm	ASTM D5185m >20	0	0	0
Copper ppm	ASTM D5185m >20	<1	1	3
Tin ppm	ASTM D5185m >20	0	0	0
Vanadium ppm	ASTM D5185m	0	<1	<1
Cadmium ppm	ASTM D5185m	0	0	0

ADDITIVES

method	limit/base	current	history1	history2
Boron ppm	ASTM D5185m	0	0	0
Barium ppm	ASTM D5185m	0	0	0
Molybdenum ppm	ASTM D5185m	0	0	0
Manganese ppm	ASTM D5185m	0	1	1
Magnesium ppm	ASTM D5185m 90	83	59	58
Calcium ppm	ASTM D5185m	4	3	0
Phosphorus ppm	ASTM D5185m 35	16	1	6
Zinc ppm	ASTM D5185m	0	0	0

CONTAMINANTS

method	limit/base	current	history1	history2
Silicon ppm	ASTM D5185m >15	1	4	3
Sodium ppm	ASTM D5185m	3	15	3
Potassium ppm	ASTM D5185m >20	0	0	0
Water %	ASTM D6304	0.014	0.012	0.009
ppm Water	ASTM D6304	144	121.6	94.3

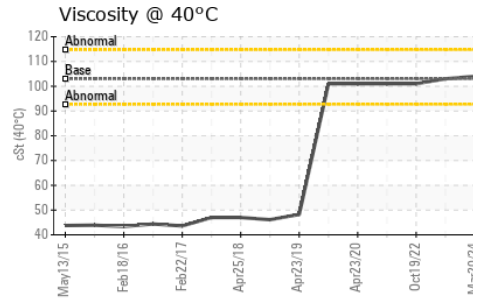
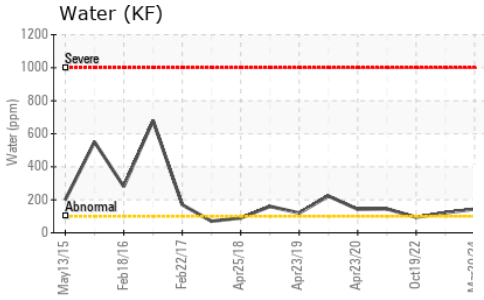
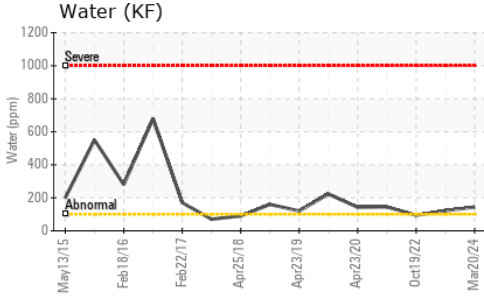
FLUID DEGRADATION

method	limit/base	current	history1	history2
Acid Number (AN) mg KOH/g	ASTM D8045 0.388	0.34	0.30	0.44

VISUAL

method	limit/base	current	history1	history2
White Metal	scalar *Visual NONE	NONE	NONE	LIGHT
Yellow Metal	scalar *Visual NONE	NONE	NONE	NONE
Precipitate	scalar *Visual NONE	NONE	NONE	NONE
Silt	scalar *Visual NONE	NONE	NONE	NONE
Debris	scalar *Visual NONE	NONE	▲ MODER	NONE
Sand/Dirt	scalar *Visual NONE	NONE	NONE	NONE
Appearance	scalar *Visual NORML	NORML	NORML	NORML
Odor	scalar *Visual NORML	NORML	NORML	NORML
Emulsified Water	scalar *Visual	NEG	NEG	NEG
Free Water	scalar *Visual	NEG	NEG	NEG

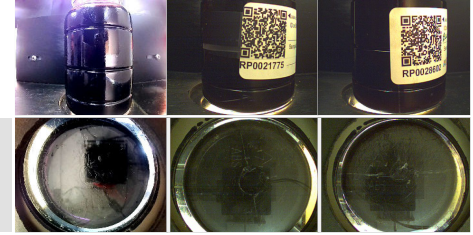
OIL ANALYSIS REPORT



FLUID PROPERTIES	method	limit/base	current	history1	history2
Visc @ 40°C	cSt	ASTM D445	103	103	101

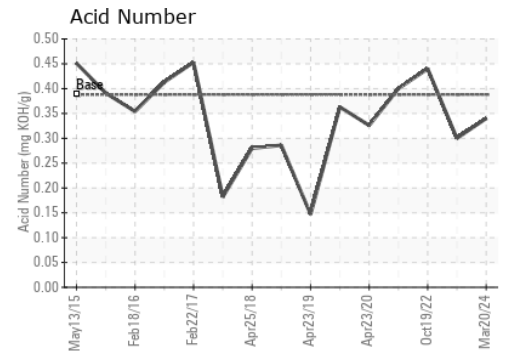
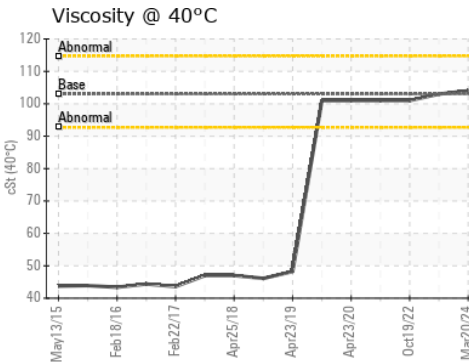
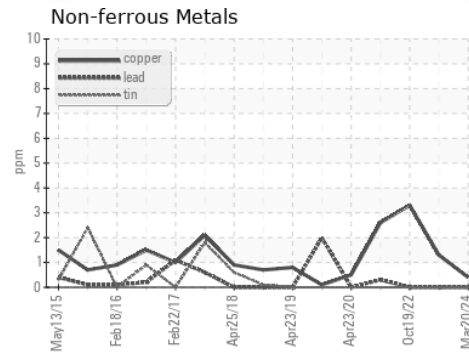
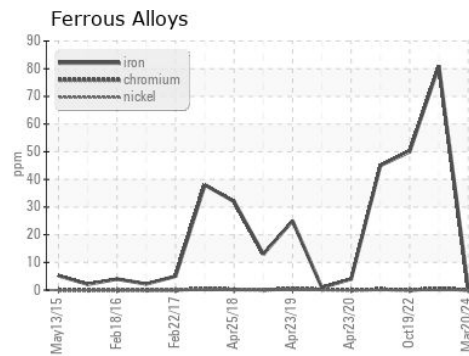
SAMPLE IMAGES	method	limit/base	current	history1	history2
---------------	--------	------------	---------	----------	----------

Color



Bottom

GRAPHS



Certificate L2367

Laboratory : WearCheck USA - 501 Madison Ave., Cary, NC 27513
Sample No. : RP0033614
Lab Number : **06132101**
Unique Number : 10951566
Test Package : IND 2

HOLLINGSWORTH & VOSE CO
 1115 SE CRYSTAL LAKE DR
 CORVALLIS, OR
 US 97333
 Contact: Jon Ayers
 jonathan.ayers@hovo.com
 T: (541)738-5399
 F: x:

To discuss this sample report, contact Customer Service at 1-800-237-1369.

* - Denotes test methods that are outside of the ISO 17025 scope of accreditation.

Statements of conformity to specifications are based on the simple acceptance decision rule (JCGM 106:2012)