



# OIL ANALYSIS REPORT

Sample Rating Trend

VISCOSITY



Area

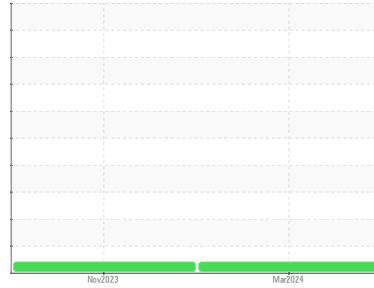
## ULTRA FG

Machine Id

### INGERSOLL RAND F35650U97276 - GILSTER MARY LEE - SHREDDER

Component

### Compressor



#### DIAGNOSIS

##### Recommendation

No corrective action is recommended at this time. Resample at the next service interval to monitor.

##### Wear

All component wear rates are normal.

##### Contamination

There is no indication of any contamination in the oil.

##### Fluid Condition

The oil viscosity is higher than normal. The AN level is acceptable for this fluid.

#### SAMPLE INFORMATION

	method	limit/base	current	history1	history2
Sample Number	Client Info		<b>UCH0000453</b>	UCH06031651	---
Sample Date	Client Info		<b>20 Mar 2024</b>	27 Nov 2023	---
Machine Age	hrs	Client Info	<b>40507</b>	39326	---
Oil Age	hrs	Client Info	<b>2849</b>	1668	---
Oil Changed	Client Info		<b>Oil Added</b>	Not Chngd	---
Sample Status			<b>ATTENTION</b>	ATTENTION	---

#### CONTAMINATION

	method	limit/base	current	history1	history2
Water	WC Method	>0.1	<b>NEG</b>	NEG	---

#### WEAR METALS

	method	limit/base	current	history1	history2
Iron	ppm	ASTM D5185m >50	<b>0</b>	<1	---
Chromium	ppm	ASTM D5185m >10	<b>0</b>	<1	---
Nickel	ppm	ASTM D5185m	<b>0</b>	<1	---
Titanium	ppm	ASTM D5185m	<b>0</b>	<1	---
Silver	ppm	ASTM D5185m	<b>0</b>	0	---
Aluminum	ppm	ASTM D5185m >25	<b>0</b>	1	---
Lead	ppm	ASTM D5185m >25	<b>0</b>	<1	---
Copper	ppm	ASTM D5185m >50	<b>1</b>	2	---
Tin	ppm	ASTM D5185m >15	<b>0</b>	<1	---
Vanadium	ppm	ASTM D5185m	<b>0</b>	0	---
Cadmium	ppm	ASTM D5185m	<b>0</b>	<1	---

#### ADDITIVES

	method	limit/base	current	history1	history2
Boron	ppm	ASTM D5185m	<b>0</b>	0	---
Barium	ppm	ASTM D5185m	<b>7</b>	22	---
Molybdenum	ppm	ASTM D5185m	<b>0</b>	<1	---
Manganese	ppm	ASTM D5185m	<b>0</b>	<1	---
Magnesium	ppm	ASTM D5185m	<b>0</b>	1	---
Calcium	ppm	ASTM D5185m	<b>60</b>	55	---
Phosphorus	ppm	ASTM D5185m	<b>171</b>	206	---
Zinc	ppm	ASTM D5185m	<b>6</b>	17	---
Sulfur	ppm	ASTM D5185m	<b>528</b>	474	---

#### CONTAMINANTS

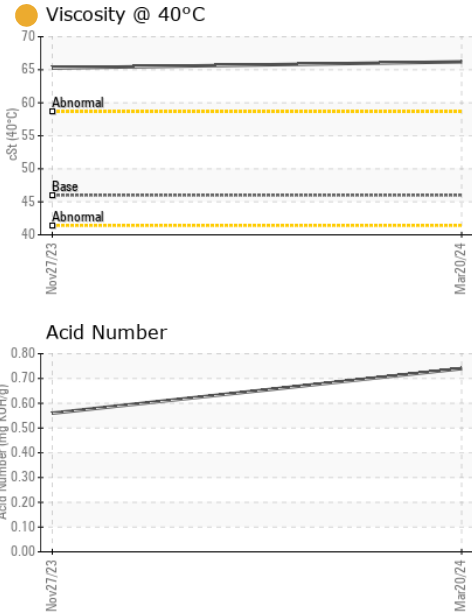
	method	limit/base	current	history1	history2
Silicon	ppm	ASTM D5185m >25	<b>0</b>	<1	---
Sodium	ppm	ASTM D5185m	<b>39</b>	56	---
Potassium	ppm	ASTM D5185m >20	<b>2</b>	6	---

#### FLUID DEGRADATION

	method	limit/base	current	history1	history2
Acid Number (AN)	mg KOH/g	ASTM D8045	<b>0.74</b>	0.56	---



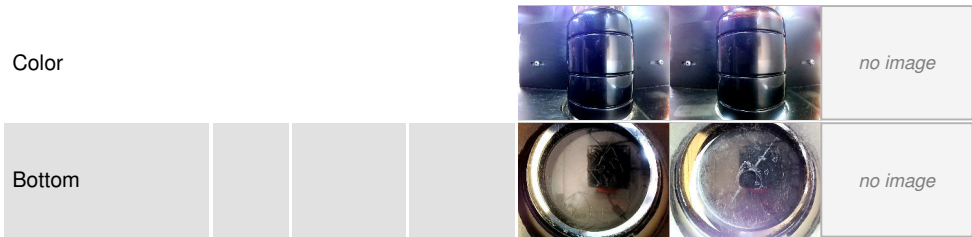
# OIL ANALYSIS REPORT



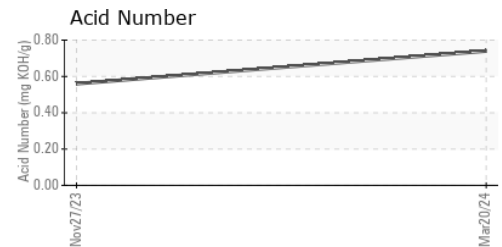
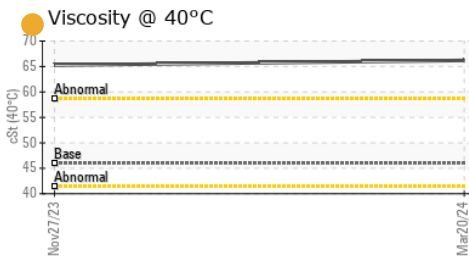
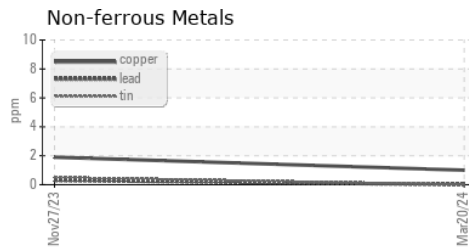
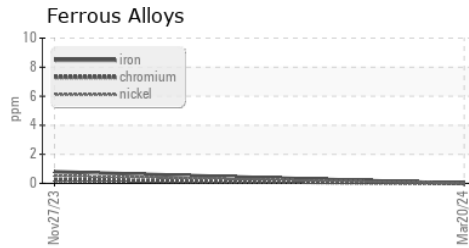
VISUAL	method	limit/base	current	history1	history2
White Metal	scalar	*Visual	NONE	NONE	---
Yellow Metal	scalar	*Visual	NONE	NONE	---
Precipitate	scalar	*Visual	NONE	NONE	---
Silt	scalar	*Visual	NONE	NONE	---
Debris	scalar	*Visual	NONE	NONE	---
Sand/Dirt	scalar	*Visual	NONE	NONE	---
Appearance	scalar	*Visual	NORML	NORML	---
Odor	scalar	*Visual	NORML	NORML	---
Emulsified Water	scalar	*Visual	>0.1	NEG	---
Free Water	scalar	*Visual		NEG	---

FLUID PROPERTIES	method	limit/base	current	history1	history2	
Visc @ 40°C	cSt	ASTM D445	46.0	● 66.2	● 65.26	---

SAMPLE IMAGES	method	limit/base	current	history1	history2
---------------	--------	------------	---------	----------	----------



## GRAPHS



Certificate L2367

**Laboratory** : WearCheck USA - 501 Madison Ave., Cary, NC 27513  
**Sample No.** : UCH0000453      **Received** : 28 Mar 2024  
**Lab Number** : 06132117      **Tested** : 29 Mar 2024  
**Unique Number** : 10951582      **Diagnosed** : 02 Apr 2024 - Angela Borella  
**Test Package** : IND 2

**JOHN HENRY FOSTER COMPANY**  
 4700 LEBOURGET STREET  
 SAINT LOUIS, MO  
 US 63134  
 Contact: RACHEL VON HATTEN  
 rvonhatten@jhfc.com  
 T: (314)593-1267  
 F: (314)874-0965

To discuss this sample report, contact Customer Service at 1-800-237-1369.

\* - Denotes test methods that are outside of the ISO 17025 scope of accreditation.

Statements of conformity to specifications are based on the simple acceptance decision rule (JCGM 106:2012)