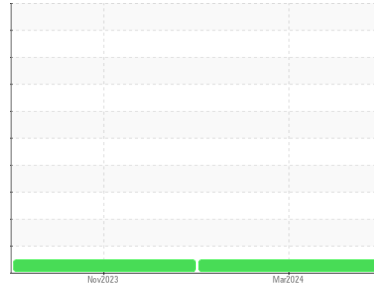




# OIL ANALYSIS REPORT

Sample Rating Trend

**NORMAL**



Area

## IR ULTRA FG

Machine Id

### INGERSOLL RAND F37836U00356 - GILSTER MARY LEE-SHREDDER

Component

#### Compressor

#### DIAGNOSIS

##### Recommendation

Resample at the next service interval to monitor.

##### Wear

All component wear rates are normal.

##### Contamination

There is no indication of any contamination in the oil.

##### Fluid Condition

The AN level is acceptable for this fluid. The condition of the oil is suitable for further service.

#### SAMPLE INFORMATION

	method	limit/base	current	history1	history2
Sample Number	Client Info		<b>UCH0000452</b>	UCH06031656	---
Sample Date	Client Info		<b>20 Mar 2024</b>	27 Nov 2023	---
Machine Age	hrs	Client Info	<b>99518</b>	98570	---
Oil Age	hrs	Client Info	<b>3006</b>	2058	---
Oil Changed	Client Info		<b>Oil Added</b>	Not Chngd	---
Sample Status			<b>NORMAL</b>	NORMAL	---

#### CONTAMINATION

	method	limit/base	current	history1	history2
Water	WC Method	>0.1	<b>NEG</b>	NEG	---

#### WEAR METALS

	method	limit/base	current	history1	history2
Iron	ppm	ASTM D5185m >50	<b>0</b>	<1	---
Chromium	ppm	ASTM D5185m >10	<b>0</b>	<1	---
Nickel	ppm	ASTM D5185m	<b>0</b>	<1	---
Titanium	ppm	ASTM D5185m	<b>0</b>	<1	---
Silver	ppm	ASTM D5185m	<b>0</b>	0	---
Aluminum	ppm	ASTM D5185m >25	<b>0</b>	1	---
Lead	ppm	ASTM D5185m >25	<b>0</b>	<1	---
Copper	ppm	ASTM D5185m >50	<b>&lt;1</b>	<1	---
Tin	ppm	ASTM D5185m >15	<b>0</b>	<1	---
Vanadium	ppm	ASTM D5185m	<b>0</b>	0	---
Cadmium	ppm	ASTM D5185m	<b>0</b>	<1	---

#### ADDITIVES

	method	limit/base	current	history1	history2
Boron	ppm	ASTM D5185m	<b>0</b>	0	---
Barium	ppm	ASTM D5185m	<b>2</b>	19	---
Molybdenum	ppm	ASTM D5185m	<b>0</b>	<1	---
Manganese	ppm	ASTM D5185m	<b>0</b>	<1	---
Magnesium	ppm	ASTM D5185m	<b>0</b>	<1	---
Calcium	ppm	ASTM D5185m	<b>46</b>	53	---
Phosphorus	ppm	ASTM D5185m	<b>326</b>	408	---
Zinc	ppm	ASTM D5185m	<b>1</b>	8	---
Sulfur	ppm	ASTM D5185m	<b>667</b>	691	---

#### CONTAMINANTS

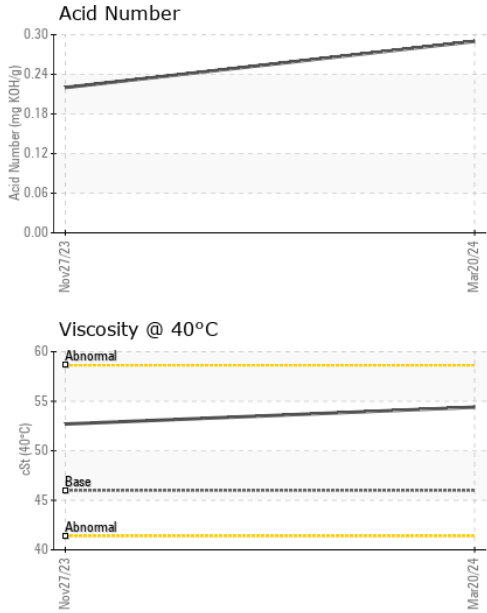
	method	limit/base	current	history1	history2
Silicon	ppm	ASTM D5185m >25	<b>0</b>	<1	---
Sodium	ppm	ASTM D5185m	<b>21</b>	22	---
Potassium	ppm	ASTM D5185m >20	<b>&lt;1</b>	4	---

#### FLUID DEGRADATION

	method	limit/base	current	history1	history2
Acid Number (AN)	mg KOH/g	ASTM D8045	<b>0.29</b>	0.22	---



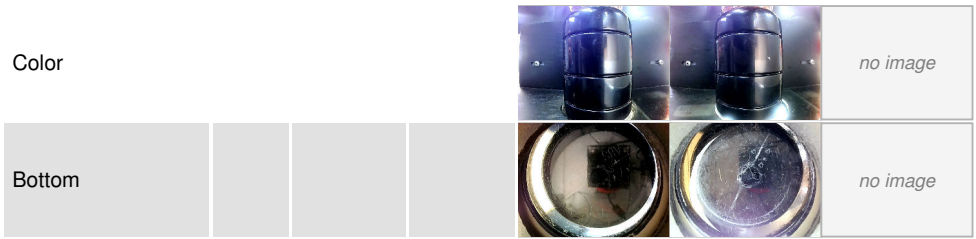
# OIL ANALYSIS REPORT



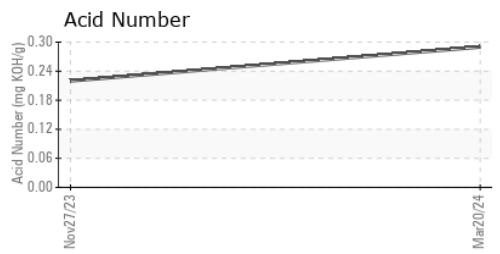
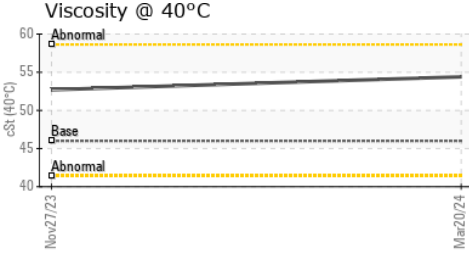
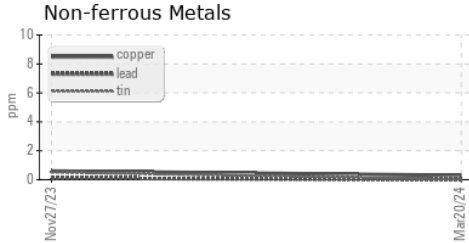
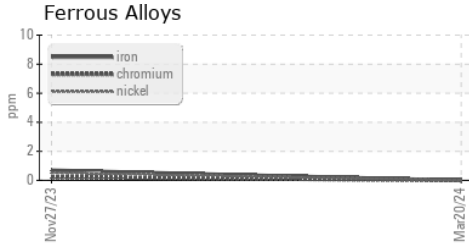
VISUAL	method	limit/base	current	history1	history2
White Metal	scalar	*Visual	NONE	NONE	---
Yellow Metal	scalar	*Visual	NONE	NONE	---
Precipitate	scalar	*Visual	NONE	NONE	---
Silt	scalar	*Visual	NONE	NONE	---
Debris	scalar	*Visual	NONE	NONE	---
Sand/Dirt	scalar	*Visual	NONE	NONE	---
Appearance	scalar	*Visual	NORML	NORML	---
Odor	scalar	*Visual	NORML	NORML	---
Emulsified Water	scalar	*Visual	>0.1	NEG	---
Free Water	scalar	*Visual		NEG	---

FLUID PROPERTIES	method	limit/base	current	history1	history2
Visc @ 40°C	cSt	ASTM D445	46.0	54.4	52.7

SAMPLE IMAGES	method	limit/base	current	history1	history2
---------------	--------	------------	---------	----------	----------



## GRAPHS



**Laboratory** : WearCheck USA - 501 Madison Ave., Cary, NC 27513  
**Sample No.** : UCH0000452 **Received** : 28 Mar 2024  
**Lab Number** : 06132118 **Tested** : 29 Mar 2024  
**Unique Number** : 10951583 **Diagnosed** : 02 Apr 2024 - Angela Borella  
**Test Package** : IND 2

**JOHN HENRY FOSTER COMPANY**  
 4700 LEBOURGET STREET  
 SAINT LOUIS, MO  
 US 63134  
 Contact: RACHEL VON HATTEN  
 rvonhatten@jhfc.com  
 T: (314)593-1267  
 F: (314)874-0965

To discuss this sample report, contact Customer Service at 1-800-237-1369.  
 \* - Denotes test methods that are outside of the ISO 17025 scope of accreditation.  
 Statements of conformity to specifications are based on the simple acceptance decision rule (JCGM 106:2012)