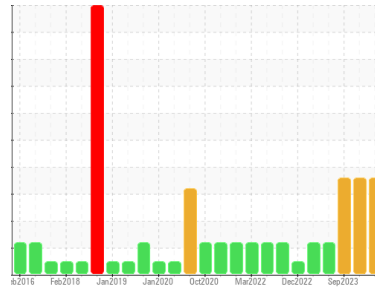




PROBLEM SUMMARY

Sample Rating Trend



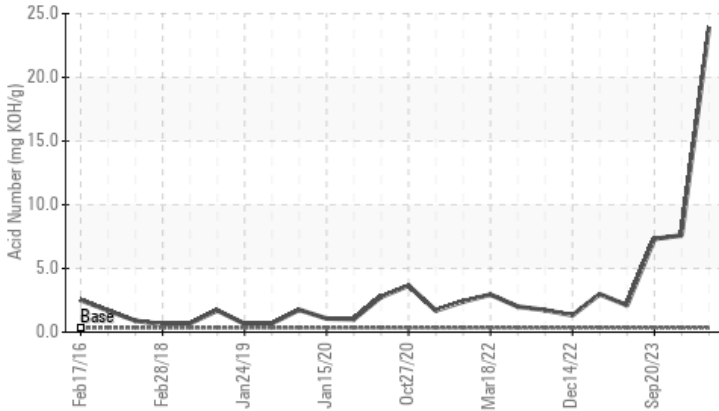
DEGRADATION



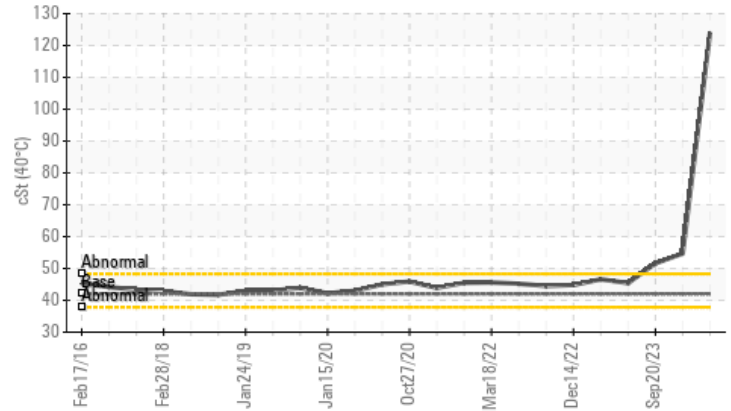
Area
ULTRACHEM 32/46 [59816]
 Machine Id
ATLAS COPCO CAI313522 - OMAHA TRACK
 Component
Compressor

COMPONENT CONDITION SUMMARY

▲ Acid Number



▲ Viscosity @ 40°C



RECOMMENDATION

We advise that you check for a possible overheat condition. Recommend drain oil if not already done and flush with cleaner before refilling with oil. Oil and filter change at the time of sampling has been noted. We recommend an early resample to monitor this condition.

PROBLEMATIC TEST RESULTS

Sample Status				SEVERE	SEVERE	SEVERE
Acid Number (AN)	mg KOH/g	ASTM D8045	0.337	▲ 23.92	▲ 7.601	▲ 7.315
Visc @ 40°C	cSt	ASTM D445	42.0	▲ 124	▲ 54.7	▲ 51.6

Customer Id: UCJOHSAI
 Sample No.: UCH06132145
 Lab Number: 06132145
 Test Package: IND 2



To manage this report scan the QR code

To discuss the diagnosis or test data:
 Jonathan Hester +1 919-379-4092 x4092
jhester@wearcheckusa.com

To change component or sample information:
 Customer Service +1 1-800-237-1369
customerservice@wearcheck.com

RECOMMENDED ACTIONS

Action	Status	Date	Done By	Description
Change Fluid	---	---	?	Oil and filter change at the time of sampling has been noted.
Flush System	---	---	?	Recommend drain oil if not already done and flush with cleaner before refilling with oil.
Change Filter	---	---	?	Oil and filter change at the time of sampling has been noted.
Resample	---	---	?	We recommend an early resample to monitor this condition.
Check For Overheating	---	---	?	We advise that you check for a possible overheat condition.

HISTORICAL DIAGNOSIS

19 Dec 2023 Diag: Jonathan Hester

DEGRADATION



We advise that you check for a possible overheat condition. Recommend drain oil if not already done and flush with cleaner before refilling with oil. We recommend an early resample to monitor this condition. All component wear rates are normal. There is no indication of any contamination in the oil. The AN level is well above the recommended limit. The oil viscosity is higher than normal. The oil is no longer serviceable.

view report



20 Sep 2023 Diag: Jonathan Hester

DEGRADATION



We advise that you check for a possible overheat condition. Oil and filter change at the time of sampling has been noted. We recommend an early resample to monitor this condition. All component wear rates are normal. There is no indication of any contamination in the oil. The AN level is above the recommended limit. The oil viscosity is higher than normal.

view report



20 Jun 2023 Diag: Don Baldrige

DEGRADATION



We recommend that you drain the oil from the component if this has not already been done. Resample at the next service interval to monitor. All component wear rates are normal. There is no indication of any contamination in the oil. The AN level is above the recommended limit. The oil is no longer serviceable.

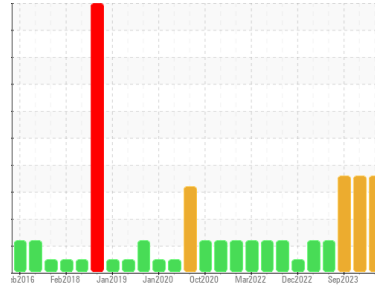
view report





OIL ANALYSIS REPORT

Sample Rating Trend



DEGRADATION



Area
ULTRACHEM 32/46 [59816]
 Machine Id
ATLAS COPCO CAI313522 - OMAHA TRACK
 Component
Compressor

DIAGNOSIS

▲ Recommendation

We advise that you check for a possible overheat condition. Recommend drain oil if not already done and flush with cleaner before refilling with oil. Oil and filter change at the time of sampling has been noted. We recommend an early resample to monitor this condition.

Wear

All component wear rates are normal.

Contamination

There is no indication of any contamination in the oil.

▲ Fluid Condition

The AN level is well above the recommended limit. The oil viscosity is higher than normal. The oil is no longer serviceable.

SAMPLE INFORMATION

	method	limit/base	current	history1	history2
Sample Number	Client Info		UCH06132145	UCH06061320	UCH05978378
Sample Date	Client Info		19 Mar 2024	19 Dec 2023	20 Sep 2023
Machine Age	hrs	Client Info	69278	23323	21488
Oil Age	hrs	Client Info	3997	5567	3732
Oil Changed	Client Info		Changed	Not Changd	Changed
Sample Status			SEVERE	SEVERE	SEVERE

CONTAMINATION

	method	limit/base	current	history1	history2
Water	WC Method	>0.1	NEG	NEG	NEG

WEAR METALS

	method	limit/base	current	history1	history2
Iron	ppm	ASTM D5185m >50	0	2	0
Chromium	ppm	ASTM D5185m >5	0	<1	0
Nickel	ppm	ASTM D5185m	0	0	0
Titanium	ppm	ASTM D5185m	0	<1	<1
Silver	ppm	ASTM D5185m	0	0	0
Aluminum	ppm	ASTM D5185m >15	0	2	0
Lead	ppm	ASTM D5185m >65	0	<1	0
Copper	ppm	ASTM D5185m >65	2	19	0
Tin	ppm	ASTM D5185m >10	0	<1	0
Vanadium	ppm	ASTM D5185m	0	0	0
Cadmium	ppm	ASTM D5185m	0	0	0

ADDITIVES

	method	limit/base	current	history1	history2
Boron	ppm	ASTM D5185m 1	0	0	0
Barium	ppm	ASTM D5185m 0.3	2	0	29
Molybdenum	ppm	ASTM D5185m 0	0	<1	0
Manganese	ppm	ASTM D5185m 0	0	0	0
Magnesium	ppm	ASTM D5185m 0	0	0	3
Calcium	ppm	ASTM D5185m 0.5	0	<1	0
Phosphorus	ppm	ASTM D5185m 536	180	279	310
Zinc	ppm	ASTM D5185m 0.2	<1	80	0
Sulfur	ppm	ASTM D5185m 649	57	207	323

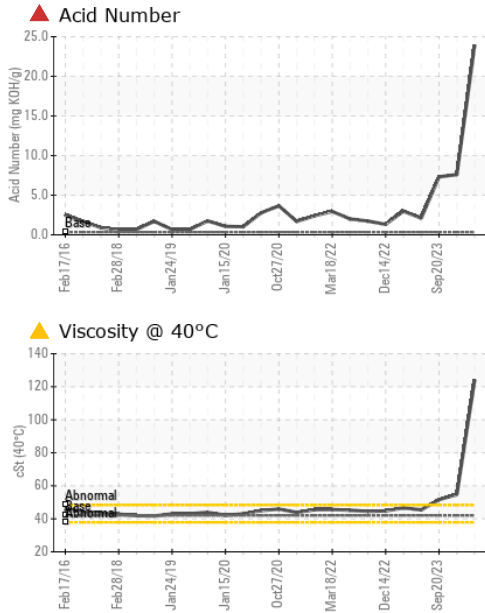
CONTAMINANTS

	method	limit/base	current	history1	history2
Silicon	ppm	ASTM D5185m >35	2	2	2
Sodium	ppm	ASTM D5185m	4	8	5
Potassium	ppm	ASTM D5185m >20	0	2	0

FLUID DEGRADATION

	method	limit/base	current	history1	history2
Acid Number (AN)	mg KOH/g	ASTM D8045 0.337	▲ 23.92	▲ 7.601	▲ 7.315

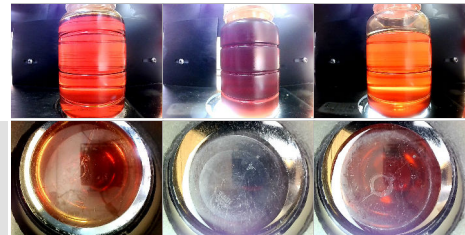
OIL ANALYSIS REPORT



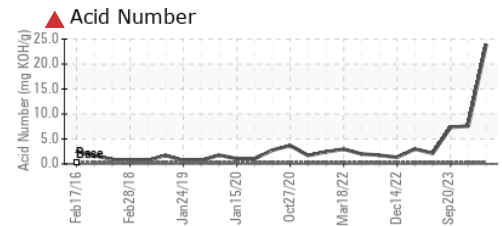
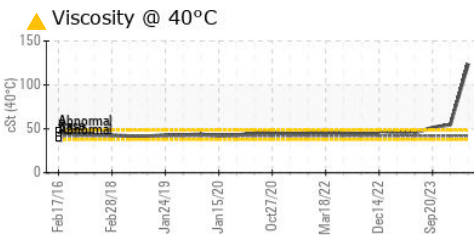
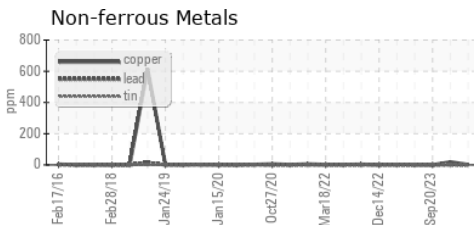
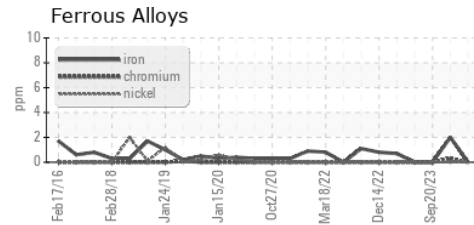
VISUAL	method	limit/base	current	history1	history2
White Metal	scalar	*Visual	NONE	NONE	NONE
Yellow Metal	scalar	*Visual	NONE	NONE	NONE
Precipitate	scalar	*Visual	NONE	NONE	NONE
Silt	scalar	*Visual	NONE	NONE	NONE
Debris	scalar	*Visual	NONE	LIGHT	NONE
Sand/Dirt	scalar	*Visual	NONE	NONE	NONE
Appearance	scalar	*Visual	NORML	NORML	NORML
Odor	scalar	*Visual	NORML	NORML	NORML
Emulsified Water	scalar	*Visual	>0.1	NEG	NEG
Free Water	scalar	*Visual		NEG	NEG

FLUID PROPERTIES	method	limit/base	current	history1	history2	
Visc @ 40°C	cSt	ASTM D445	42.0	▲ 124	▲ 54.7	▲ 51.6

SAMPLE IMAGES	method	limit/base	current	history1	history2
Color					
Bottom					



GRAPHS



Certificate L2367

Laboratory : WearCheck USA - 501 Madison Ave., Cary, NC 27513
Sample No. : UCH06132145
Lab Number : 06132145
Unique Number : 10951610
Test Package : IND 2

Received : 28 Mar 2024
Tested : 29 Mar 2024
Diagnosed : 02 Apr 2024 - Jonathan Hester

JOHN HENRY FOSTER COMPANY
 4700 LEBOURGET STREET
 SAINT LOUIS, MO
 US 63134
 Contact: RACHEL VON HATTEN
 rvonhatten@jhfc.com
 T: (314)593-1267
 F: (314)874-0965

To discuss this sample report, contact Customer Service at 1-800-237-1369.

* - Denotes test methods that are outside of the ISO 17025 scope of accreditation.

Statements of conformity to specifications are based on the simple acceptance decision rule (JCGM 106:2012)