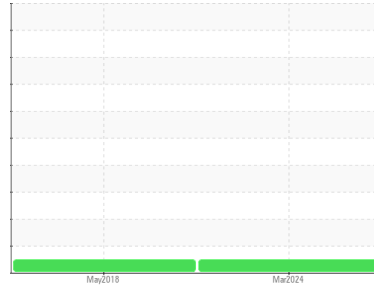




# OIL ANALYSIS REPORT

Sample Rating Trend

**NORMAL**



Area  
**ALL ADVANTAGE**  
 Machine Id  
**M77451**  
 Component  
**Compressor**

## DIAGNOSIS

### Recommendation

Resample at the next service interval to monitor.

### Wear

All component wear rates are normal.

### Contamination

There is no indication of any contamination in the oil.

### Fluid Condition

The AN level is acceptable for this fluid. The condition of the oil is suitable for further service.

SAMPLE INFORMATION		method	limit/base	current	history1	history2
Sample Number	Client Info			<b>UCH06132167</b>	UCH04482515	---
Sample Date	Client Info			<b>19 Mar 2024</b>	21 May 2018	---
Machine Age	hrs	Client Info		<b>45530</b>	13160	---
Oil Age	hrs	Client Info		<b>3504</b>	2400	---
Oil Changed	Client Info			<b>Not Chngd</b>	Not Chngd	---
Sample Status				<b>NORMAL</b>	NORMAL	---

CONTAMINATION		method	limit/base	current	history1	history2
Water	WC Method		>0.1	<b>NEG</b>	NEG	---

WEAR METALS		method	limit/base	current	history1	history2
Iron	ppm	ASTM D5185m	>50	<b>&lt;1</b>	11	---
Chromium	ppm	ASTM D5185m	>10	<b>0</b>	0	---
Nickel	ppm	ASTM D5185m		<b>0</b>	0	---
Titanium	ppm	ASTM D5185m		<b>0</b>	0	---
Silver	ppm	ASTM D5185m		<b>0</b>	<1	---
Aluminum	ppm	ASTM D5185m	>25	<b>0</b>	<1	---
Lead	ppm	ASTM D5185m	>25	<b>0</b>	<1	---
Copper	ppm	ASTM D5185m	>50	<b>&lt;1</b>	<1	---
Tin	ppm	ASTM D5185m	>15	<b>0</b>	<1	---
Antimony	ppm	ASTM D5185m		<b>---</b>	0	---
Vanadium	ppm	ASTM D5185m		<b>0</b>	0	---
Cadmium	ppm	ASTM D5185m		<b>0</b>	0	---

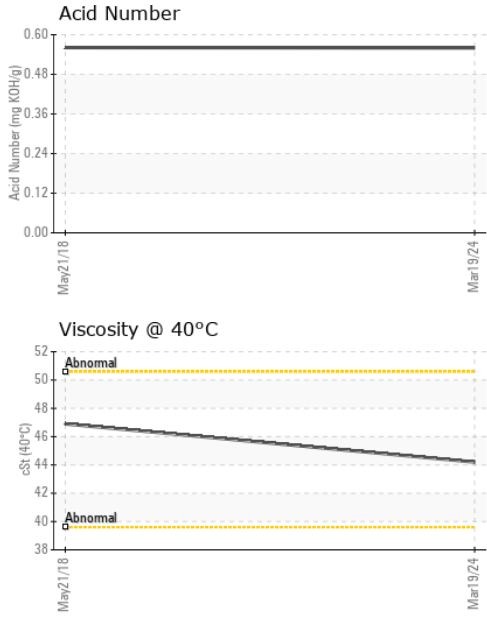
ADDITIVES		method	limit/base	current	history1	history2
Boron	ppm	ASTM D5185m		<b>0</b>	<1	---
Barium	ppm	ASTM D5185m		<b>0</b>	<1	---
Molybdenum	ppm	ASTM D5185m		<b>0</b>	0	---
Manganese	ppm	ASTM D5185m		<b>0</b>	<1	---
Magnesium	ppm	ASTM D5185m		<b>0</b>	<1	---
Calcium	ppm	ASTM D5185m		<b>0</b>	<1	---
Phosphorus	ppm	ASTM D5185m		<b>312</b>	463	---
Zinc	ppm	ASTM D5185m		<b>64</b>	23	---
Sulfur	ppm	ASTM D5185m		<b>775</b>	70	---

CONTAMINANTS		method	limit/base	current	history1	history2
Silicon	ppm	ASTM D5185m	>25	<b>0</b>	<1	---
Sodium	ppm	ASTM D5185m		<b>&lt;1</b>	<1	---
Potassium	ppm	ASTM D5185m	>20	<b>0</b>	<1	---

FLUID DEGRADATION		method	limit/base	current	history1	history2
Acid Number (AN)	mg KOH/g	ASTM D8045		<b>0.56</b>	0.561	---



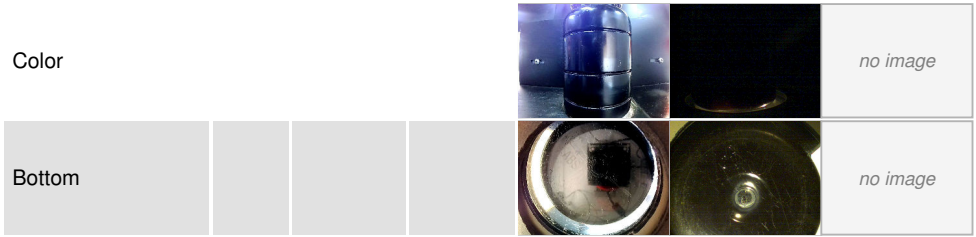
# OIL ANALYSIS REPORT



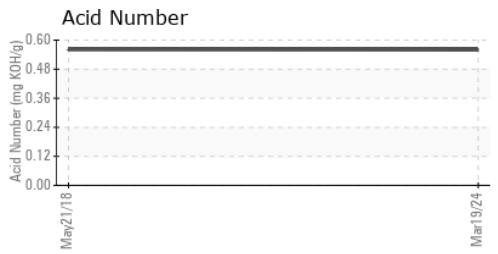
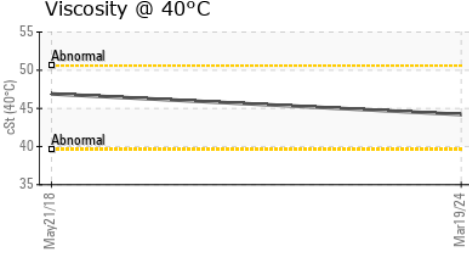
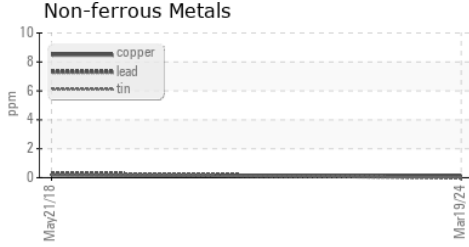
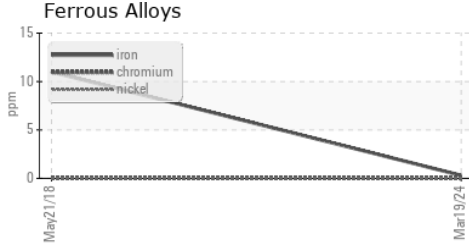
VISUAL	method	limit/base	current	history1	history2
White Metal	scalar	*Visual	NONE	NONE	---
Yellow Metal	scalar	*Visual	NONE	NONE	---
Precipitate	scalar	*Visual	NONE	NONE	---
Silt	scalar	*Visual	NONE	NONE	---
Debris	scalar	*Visual	NONE	NONE	LIGHT
Sand/Dirt	scalar	*Visual	NONE	NONE	---
Appearance	scalar	*Visual	NORML	NORML	---
Odor	scalar	*Visual	NORML	NORML	---
Emulsified Water	scalar	*Visual	>0.1	NEG	0.1%
Free Water	scalar	*Visual		NEG	---

FLUID PROPERTIES	method	limit/base	current	history1	history2
Visc @ 40°C	cSt	ASTM D445	<b>44.2</b>	46.9	---

SAMPLE IMAGES	method	limit/base	current	history1	history2
---------------	--------	------------	---------	----------	----------



## GRAPHS



Certificate L2367

**Laboratory** : WearCheck USA - 501 Madison Ave., Cary, NC 27513  
**Sample No.** : UCH06132167      **Received** : 28 Mar 2024  
**Lab Number** : **06132167**      **Tested** : 29 Mar 2024  
**Unique Number** : 10951632      **Diagnosed** : 02 Apr 2024 - Angela Borella  
**Test Package** : IND 2

**A-L-L EQUIPMENT INC**  
 204 38TH ST  
 MOLINE, IL  
 US 61265  
 Contact: KEVIN DESPOT  
 kevind@a-l-equipment.com  
 T: (815)877-7000  
 F: (309)762-9950

To discuss this sample report, contact Customer Service at 1-800-237-1369.  
 \* - Denotes test methods that are outside of the ISO 17025 scope of accreditation.  
 Statements of conformity to specifications are based on the simple acceptance decision rule (JCGM 106:2012)