



FUEL REPORT

Sample Rating Trend



NORMAL



Area

VA Ann Arbor Healthcare System [8008]

Machine Id

[VA Ann Arbor Healthcare System] TANK 900 KW BLDG 15 UST

Component

Diesel Fuel

Fluid

No.2 DIESEL FUEL (ULTRALOW SULPHUR) (4000 GAL)

DIAGNOSIS

Recommendation

All laboratory tests indicate that this sample meets specifications for No.2 diesel fuel.

Corrosion

All metal levels are normal indicating no corrosion in the system.

Contaminants

There is no bacteria or fungus (yeast and/or mold) indicated in the sample. The water content is negligible. There is no indication of any contamination in the fuel. The amount and size of particulates present in the system are acceptable.

Fuel Condition

Sulfur value derived by ASTM D5453 method for ULSD validation.

SAMPLE INFORMATION		method	limit/base	current	history1	history2
Sample Number	Client Info			WC06132845	---	---
Sample Date	Client Info			14 Mar 2024	---	---
Machine Age	hrs	Client Info		0	---	---
Sample Status				NORMAL	---	---

PHYSICAL PROPERTIES		method	limit/base	current	history1	history2
Specific Gravity		*ASTM D1298	0.839	0.853	---	---
Fuel Color	text	*Visual Screen	Yellow	Red	---	---
ASTM Color	scalar	*ASTM D1500		L4.5	---	---
Visc @ 40°C	cSt	ASTM D445	3.0	2.59	---	---
Pensky-Martens Flash Point	°C	*PMCC Calculated	52	66.4	---	---

SULFUR CONTENT		method	limit/base	current	history1	history2
Sulfur	ppm	ASTM D5185m	10	1584	---	---
Sulfur (UVF)	ppm	ASTM D5453		1377	---	---

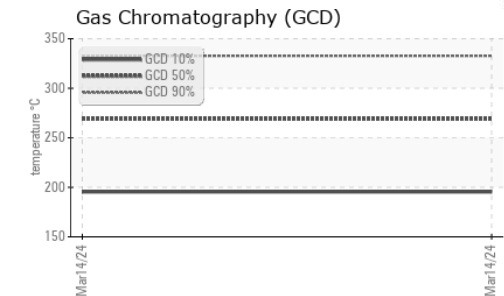
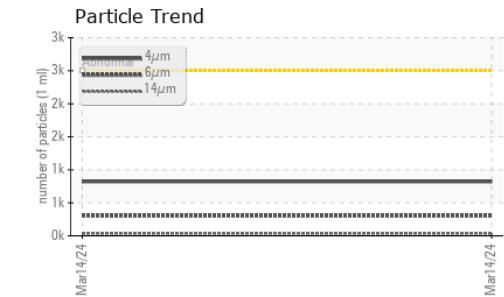
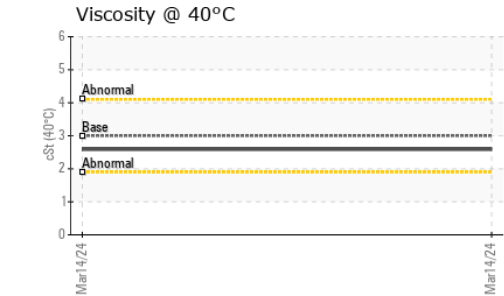
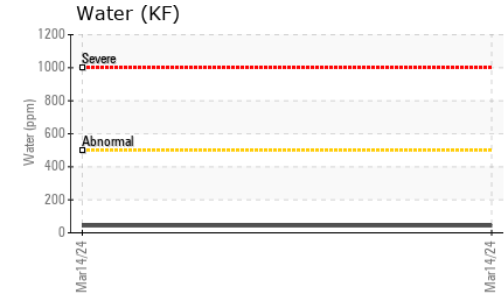
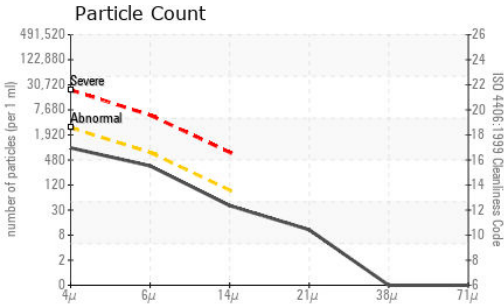
DISTILLATION		method	limit/base	current	history1	history2
Initial Boiling Point	°C	ASTM D86	165	173	---	---
5% Distillation Point	°C	ASTM D86		202	---	---
10% Distill Point	°C	ASTM D86	201	213	---	---
15% Distillation Point	°C	ASTM D86		222	---	---
20% Distill Point	°C	ASTM D86	216	229	---	---
30% Distill Point	°C	ASTM D86	230	241	---	---
40% Distill Point	°C	ASTM D86	243	252	---	---
50% Distill Point	°C	ASTM D86	255	263	---	---
60% Distill Point	°C	ASTM D86	267	273	---	---
70% Distill Point	°C	ASTM D86	280	284	---	---
80% Distill Point	°C	ASTM D86	295	296	---	---
85% Distillation Point	°C	ASTM D86		304	---	---
90% Distill Point	°C	ASTM D86	310	313	---	---
95% Distillation Point	°C	ASTM D86		327	---	---
Final Boiling Point	°C	ASTM D86	341	338	---	---
Distillation Residue	%	ASTM D86	3.0	1.4	---	---
Distillation Loss	%	ASTM D86	3.0	0.3	---	---

IGNITION QUALITY		method	limit/base	current	history1	history2
API Gravity		ASTM D7777	37.7	34.4	---	---
Cetane Index		ASTM D4737	<40.0	42.6	---	---

CONTAMINANTS		method	limit/base	current	history1	history2
Silicon	ppm	ASTM D5185m	<1.0	0	---	---
Sodium	ppm	ASTM D5185m	<0.1	<1	---	---
Potassium	ppm	ASTM D5185m	<0.1	0	---	---
Water	%	ASTM D6304	<0.05	0.004	---	---
ppm Water	ppm	ASTM D6304	<500	43	---	---
% Gasoline	%	*In-House	<0.50	0.0	---	---
% Biodiesel	%	*In-House	<20.0	0.0	---	---



FUEL REPORT

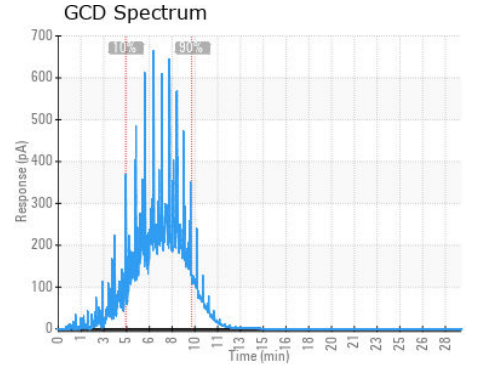
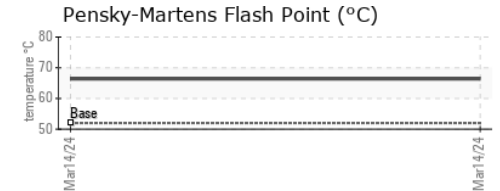
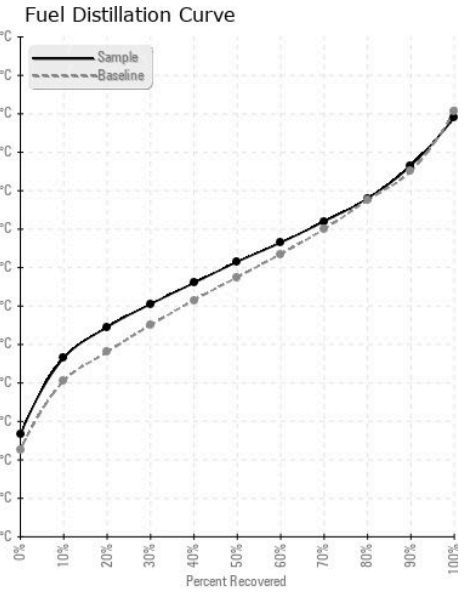


FLUID CLEANLINESS	method	limit/base	current	history1	history2
Particles >4µm	ASTM D7647	>2500	821	---	---
Particles >6µm	ASTM D7647	>640	304	---	---
Particles >14µm	ASTM D7647	>80	34	---	---
Particles >21µm	ASTM D7647	>20	9	---	---
Particles >38µm	ASTM D7647	>4	0	---	---
Particles >71µm	ASTM D7647	>3	0	---	---
Oil Cleanliness	ISO 4406 (c)	>18/16/13	17/15/12	---	---

HEAVY METALS	method	limit/base	current	history1	history2
Aluminum	ppm	ASTM D5185m <0.1	0	---	---
Nickel	ppm	ASTM D5185m <0.1	<1	---	---
Lead	ppm	ASTM D5185m <0.1	0	---	---
Vanadium	ppm	ASTM D5185m <0.1	0	---	---
Iron	ppm	ASTM D5185m <0.1	0	---	---
Calcium	ppm	ASTM D5185m <0.1	0	---	---
Magnesium	ppm	ASTM D5185m <0.1	0	---	---
Phosphorus	ppm	ASTM D5185m <0.1	0	---	---
Zinc	ppm	ASTM D5185m <0.1	0	---	---

SAMPLE IMAGES	method	limit/base	current	history1	history2
Color					
Bottom					

GRAPHS



Laboratory : WearCheck USA - 501 Madison Ave., Cary, NC 27513
Sample No. : WC06132845 **Received** : 28 Mar 2024
Lab Number : **06132845** **Tested** : 10 Apr 2024
Unique Number : 10952310 **Diagnosed** : 10 Apr 2024 - Doug Bogart
Test Package : DF-2 (Additional Tests: Fuel, Screen)

PETROLEUM RECOVERY SERVICES
 210 POWELL DR
 SUMMERVILLE, SC
 US 29483
 Contact: AJAY EL
 Ajay@prsfuel.com
 T: (843)225-1777
 F:

To discuss this sample report, contact Customer Service at 1-800-237-1369.
 * - Denotes test methods that are outside of the ISO 17025 scope of accreditation.
 Statements of conformity to specifications are based on the simple acceptance decision rule (JCGM 106:2012)