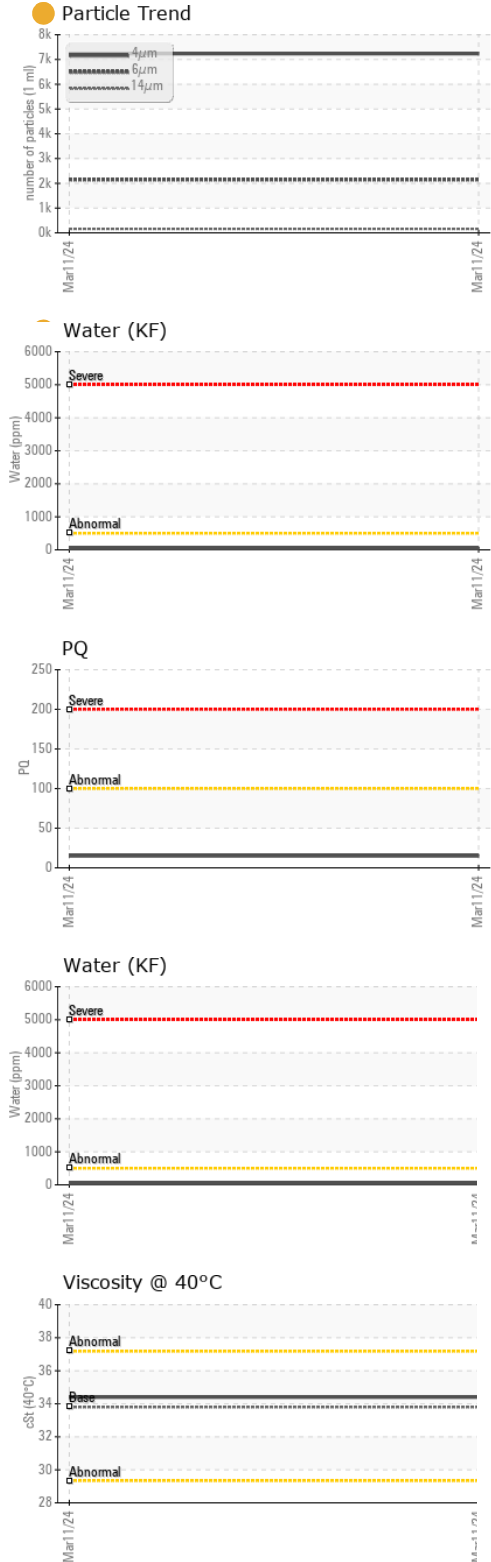




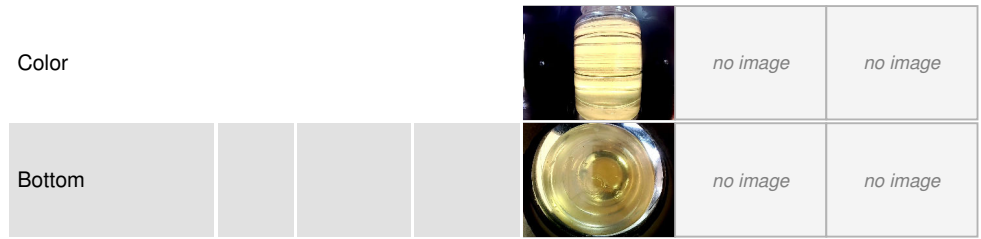
OIL ANALYSIS REPORT



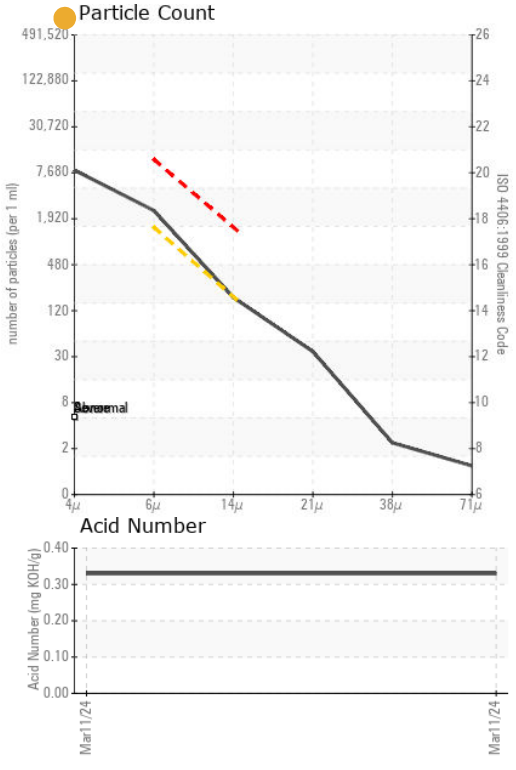
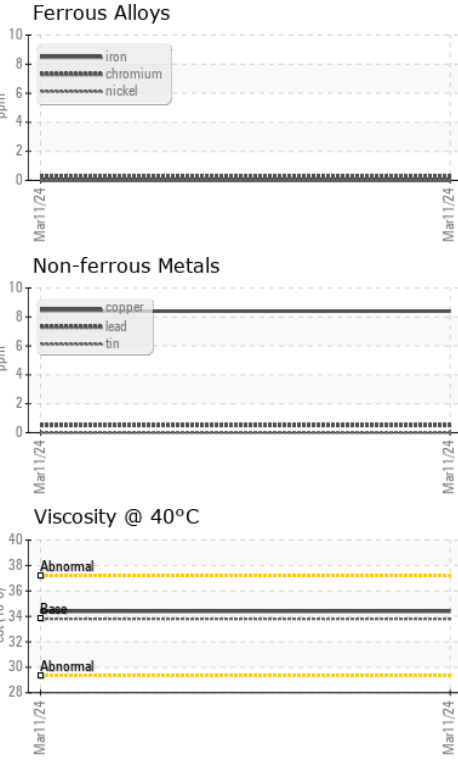
VISUAL	method	limit/base	current	history1	history2
White Metal	scalar	*Visual	NONE	NONE	---
Yellow Metal	scalar	*Visual	NONE	NONE	---
Precipitate	scalar	*Visual	NONE	NONE	---
Silt	scalar	*Visual	NONE	NONE	---
Debris	scalar	*Visual	NONE	NONE	---
Sand/Dirt	scalar	*Visual	NONE	NONE	---
Appearance	scalar	*Visual	NORML	NORML	---
Odor	scalar	*Visual	NORML	NORML	---
Emulsified Water	scalar	*Visual	>0.05	NEG	---
Free Water	scalar	*Visual		NEG	---

FLUID PROPERTIES	method	limit/base	current	history1	history2
Visc @ 40°C	cSt	ASTM D445	33.8	34.4	---

SAMPLE IMAGES	method	limit/base	current	history1	history2
---------------	--------	------------	---------	----------	----------



GRAPHS



Laboratory : WearCheck USA - 501 Madison Ave., Cary, NC 27513
Sample No. : NX012274 **Received** : 29 Mar 2024
Lab Number : **06134016** **Tested** : 03 Apr 2024
Unique Number : 10953481 **Diagnosed** : 03 Apr 2024 - Don Baldrige
Test Package : IND 2 (Additional Tests: KF, PQ)

NORDEX USA - Chicago
 300 SOUTH WACKER DRIVE, SUITE 1500
 CHICAGO, IL
 US 60606
 Contact: DEVIN LINEHAN
 DLinehan@nordex-online.com
 T: (312)386-4124
 F: (312)386-7102

To discuss this sample report, contact Customer Service at 1-800-237-1369.
 * - Denotes test methods that are outside of the ISO 17025 scope of accreditation.
 Statements of conformity to specifications are based on the simple acceptance decision rule (JCGM 106:2012)