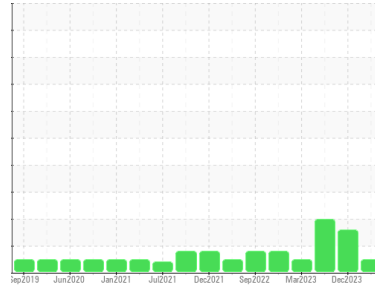




# OIL ANALYSIS REPORT

Sample Rating Trend



**NORMAL**



Machine Id  
**LOWE\_U2120 LOWE\_U2120\_P2120**  
 Component  
**Drive End Pump**  
 Fluid  
**ROYAL PURPLE SYNFILM GT 32 (--- GAL)**

## DIAGNOSIS

### Recommendation

Resample at the next service interval to monitor.

### Wear

All component wear rates are normal.

### Contamination

There is no indication of any contamination in the oil.

### Fluid Condition

The AN level is acceptable for this fluid. The condition of the oil is suitable for further service.

## SAMPLE INFORMATION

method	limit/base	current	history1	history2
Sample Number	Client Info	<b>RP0029179</b>	RP0024049	RP0020844
Sample Date	Client Info	<b>27 Mar 2024</b>	18 Dec 2023	14 Jun 2023
Machine Age	hrs	Client Info	<b>0</b>	0
Oil Age	hrs	Client Info	<b>0</b>	0
Oil Changed	Client Info	<b>N/A</b>	N/A	N/A
Sample Status		<b>NORMAL</b>	ABNORMAL	ABNORMAL

## WEAR METALS

method	limit/base	current	history1	history2	
Iron	ppm	ASTM D5185m >75	<b>0</b>	0	<1
Chromium	ppm	ASTM D5185m >5	<b>&lt;1</b>	0	<1
Nickel	ppm	ASTM D5185m	<b>&lt;1</b>	0	<1
Titanium	ppm	ASTM D5185m	<b>0</b>	0	0
Silver	ppm	ASTM D5185m	<b>0</b>	0	0
Aluminum	ppm	ASTM D5185m >5	<b>&lt;1</b>	<1	1
Lead	ppm	ASTM D5185m >10	<b>0</b>	1	<1
Copper	ppm	ASTM D5185m >15	<b>0</b>	<1	0
Tin	ppm	ASTM D5185m	<b>&lt;1</b>	1	2
Vanadium	ppm	ASTM D5185m	<b>0</b>	0	0
Cadmium	ppm	ASTM D5185m	<b>0</b>	0	0

## ADDITIVES

method	limit/base	current	history1	history2	
Boron	ppm	ASTM D5185m	<b>0</b>	0	0
Barium	ppm	ASTM D5185m	<b>0</b>	0	0
Molybdenum	ppm	ASTM D5185m	<b>0</b>	0	0
Manganese	ppm	ASTM D5185m	<b>&lt;1</b>	<1	<1
Magnesium	ppm	ASTM D5185m	<b>100</b>	100	101
Calcium	ppm	ASTM D5185m	<b>5</b>	6	6
Phosphorus	ppm	ASTM D5185m	<b>&lt;1</b>	3	2
Zinc	ppm	ASTM D5185m	<b>0</b>	0	0

## CONTAMINANTS

method	limit/base	current	history1	history2	
Silicon	ppm	ASTM D5185m >20	<b>2</b>	▲ 22	▲ 27
Sodium	ppm	ASTM D5185m	<b>2</b>	<1	1
Potassium	ppm	ASTM D5185m >20	<b>2</b>	<1	1
Water	%	ASTM D6304 >.1	<b>0.019</b>	0.022	0.021
ppm Water	ppm	ASTM D6304 >1000	<b>196</b>	223	211.7

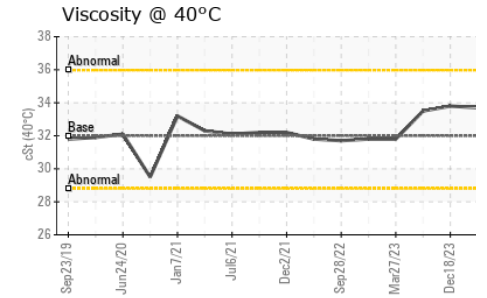
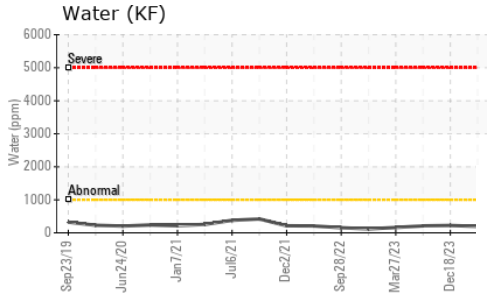
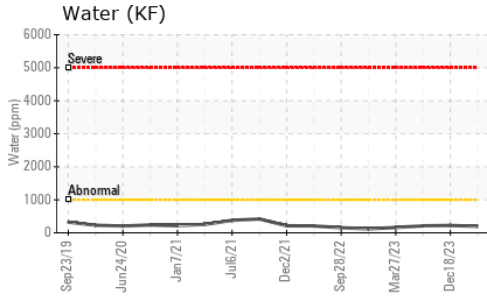
## FLUID DEGRADATION

method	limit/base	current	history1	history2	
Acid Number (AN)	mg KOH/g	ASTM D8045	<b>0.46</b>	0.35	0.42

## VISUAL

method	limit/base	current	history1	history2	
White Metal	scalar	*Visual NONE	<b>NONE</b>	NONE	NONE
Yellow Metal	scalar	*Visual NONE	<b>NONE</b>	NONE	NONE
Precipitate	scalar	*Visual NONE	<b>NONE</b>	NONE	NONE
Silt	scalar	*Visual NONE	<b>NONE</b>	NONE	NONE
Debris	scalar	*Visual NONE	<b>NONE</b>	LIGHT	▲ MODER
Sand/Dirt	scalar	*Visual NONE	<b>NONE</b>	NONE	NONE
Appearance	scalar	*Visual NORML	<b>NORML</b>	NORML	NORML
Odor	scalar	*Visual NORML	<b>NORML</b>	NORML	NORML
Emulsified Water	scalar	*Visual >.1	<b>NEG</b>	NEG	NEG
Free Water	scalar	*Visual	<b>NEG</b>	NEG	NEG

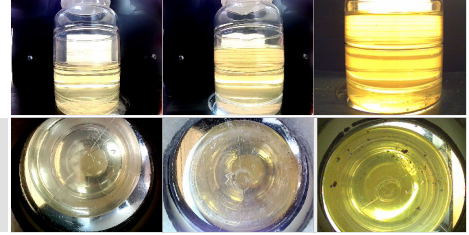
# OIL ANALYSIS REPORT



FLUID PROPERTIES		method	limit/base	current	history1	history2
Visc @ 40°C	cSt	ASTM D445	32	<b>33.7</b>	33.8	33.5

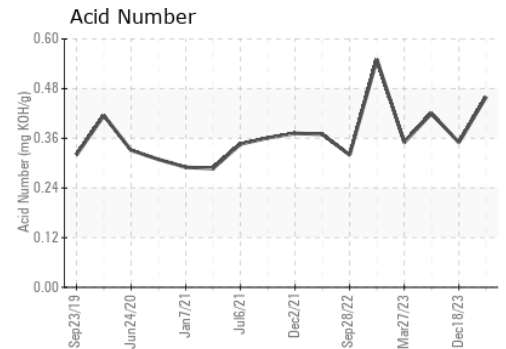
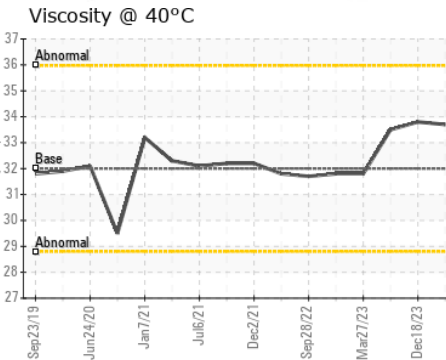
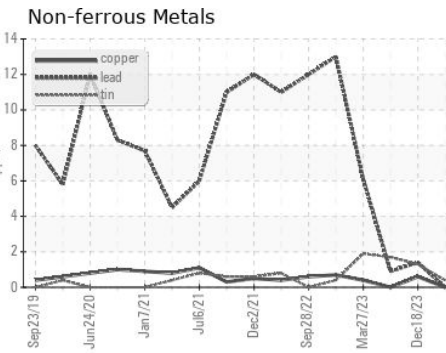
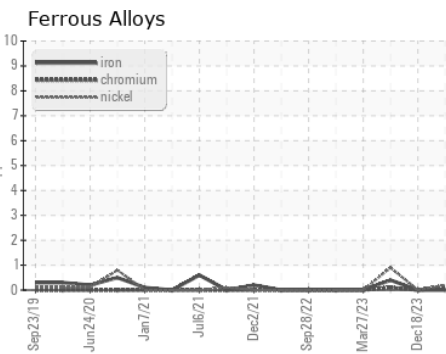
SAMPLE IMAGES		method	limit/base	current	history1	history2
---------------	--	--------	------------	---------	----------	----------

Color



Bottom

## GRAPHS



Certificate L2367

**Laboratory** : WearCheck USA - 501 Madison Ave., Cary, NC 27513  
**Sample No.** : RP0029179  
**Lab Number** : **06135046**  
**Unique Number** : 10954511  
**Test Package** : PLANT  
**Received** : 01 Apr 2024  
**Tested** : 03 Apr 2024  
**Diagnosed** : 03 Apr 2024 - Don Baldrige

**ENERGY TRANSFER - LOWELL**  
 2475 OHIO STATE ROUTE 19  
 REPUBLIC, OH  
 US 44867  
 Contact: EDDIE RIDDLE

To discuss this sample report, contact Customer Service at 1-800-237-1369.

\* - Denotes test methods that are outside of the ISO 17025 scope of accreditation.

Statements of conformity to specifications are based on the simple acceptance decision rule (JCGM 106:2012)

T: (419)467-7972

F: