



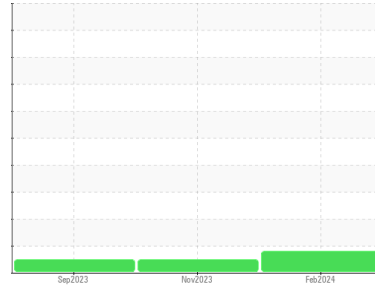
OIL ANALYSIS REPORT

Sample Rating Trend

WEAR



Machine Id
GOULDS CLXT650P003
Component
Pump
Fluid
HYDRAULIC OIL FG ISO 68 (--- GAL)



DIAGNOSIS

Recommendation

No corrective action is recommended at this time. Resample at the next service interval to monitor.

Wear

The copper level is abnormal. All other component wear rates are normal.

Contamination

There is no indication of any contamination in the oil.

Fluid Condition

The AN level is acceptable for this fluid. The condition of the oil is suitable for further service.

SAMPLE INFORMATION

	method	limit/base	current	history1	history2
Sample Number	Client Info		WC0888242	WC0838609	WC0771953
Sample Date	Client Info		16 Feb 2024	30 Nov 2023	07 Sep 2023
Machine Age	yrs	Client Info	0	0	0
Oil Age	yrs	Client Info	0	0	0
Oil Changed	Client Info		N/A	N/A	N/A
Sample Status			ABNORMAL	NORMAL	NORMAL

CONTAMINATION

	method	limit/base	current	history1	history2
Water	WC Method	>.1	NEG	NEG	NEG

WEAR METALS

	method	limit/base	current	history1	history2
Iron	ppm	ASTM D5185m >90	4	<1	10
Chromium	ppm	ASTM D5185m >5	<1	<1	<1
Nickel	ppm	ASTM D5185m >5	1	<1	<1
Titanium	ppm	ASTM D5185m >3	0	<1	0
Silver	ppm	ASTM D5185m >3	0	0	0
Aluminum	ppm	ASTM D5185m >7	0	2	<1
Lead	ppm	ASTM D5185m >12	2	<1	<1
Copper	ppm	ASTM D5185m >30	▲ 38	<1	<1
Tin	ppm	ASTM D5185m >9	2	<1	<1
Vanadium	ppm	ASTM D5185m	0	0	0
Cadmium	ppm	ASTM D5185m	0	<1	<1

ADDITIVES

	method	limit/base	current	history1	history2
Boron	ppm	ASTM D5185m 5	0	0	0
Barium	ppm	ASTM D5185m 5	0	7	<1
Molybdenum	ppm	ASTM D5185m 5	0	<1	<1
Manganese	ppm	ASTM D5185m	<1	<1	<1
Magnesium	ppm	ASTM D5185m 5	1	0	0
Calcium	ppm	ASTM D5185m 12	<1	2	<1
Phosphorus	ppm	ASTM D5185m 400	616	623	599
Zinc	ppm	ASTM D5185m 12	0	2	0
Sulfur	ppm	ASTM D5185m 650	637	557	593

CONTAMINANTS

	method	limit/base	current	history1	history2
Silicon	ppm	ASTM D5185m >60	2	<1	1
Sodium	ppm	ASTM D5185m	1	0	0
Potassium	ppm	ASTM D5185m >20	3	2	2

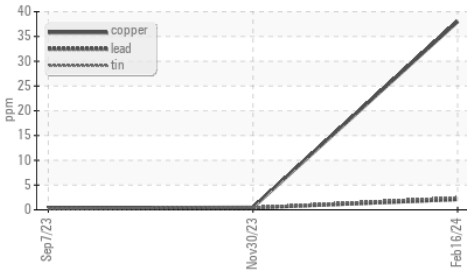
FLUID DEGRADATION

	method	limit/base	current	history1	history2
Acid Number (AN)	mg KOH/g	ASTM D8045 0.50	0.56	0.52	0.54

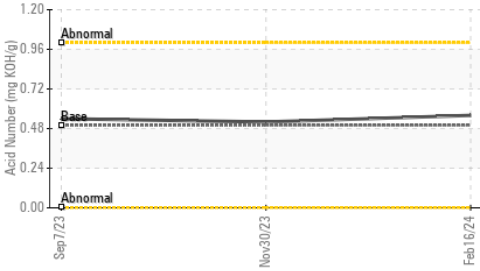


OIL ANALYSIS REPORT

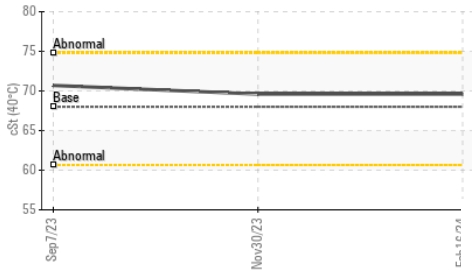
▲ Non-ferrous Metals



Acid Number



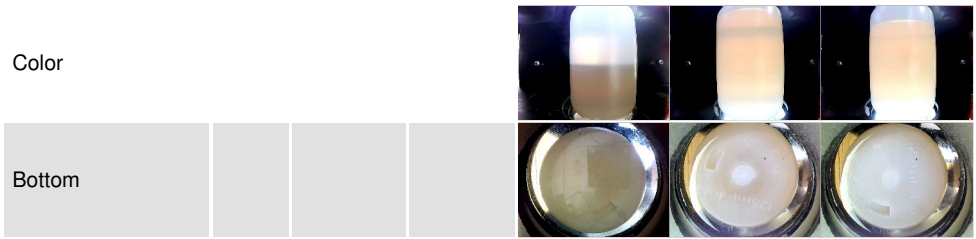
Viscosity @ 40°C



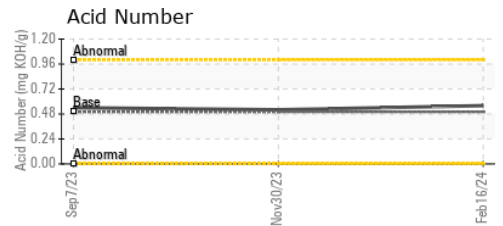
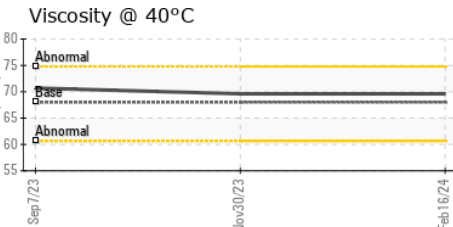
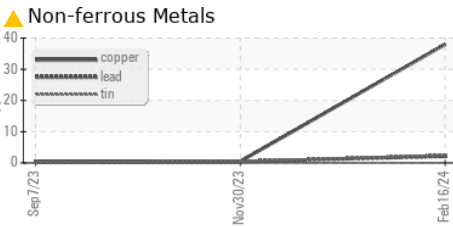
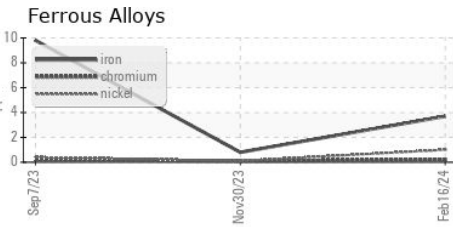
VISUAL	method	limit/base	current	history1	history2
White Metal	scalar	*Visual	NONE	NONE	NONE
Yellow Metal	scalar	*Visual	NONE	NONE	NONE
Precipitate	scalar	*Visual	NONE	NONE	NONE
Silt	scalar	*Visual	NONE	NONE	NONE
Debris	scalar	*Visual	NONE	NONE	NONE
Sand/Dirt	scalar	*Visual	NONE	NONE	NONE
Appearance	scalar	*Visual	NORML	NORML	NORML
Odor	scalar	*Visual	NORML	NORML	NORML
Emulsified Water	scalar	*Visual	>.1	NEG	NEG
Free Water	scalar	*Visual		NEG	NEG

FLUID PROPERTIES	method	limit/base	current	history1	history2
Visc @ 40°C	cSt	ASTM D445 68	69.6	69.6	70.7

SAMPLE IMAGES	method	limit/base	current	history1	history2
---------------	--------	------------	---------	----------	----------



GRAPHS



Certificate L2367

Laboratory : WearCheck USA - 501 Madison Ave., Cary, NC 27513
Sample No. : WC0888242 **Received** : 01 Apr 2024
Lab Number : 06135123 **Tested** : 02 Apr 2024
Unique Number : 10954588 **Diagnosed** : 04 Apr 2024 - Jonathan Hester
Test Package : IND 2

TAKEDA
 305-505 BAXALTA PARKWAY
 SOCIAL CIRCLE, GA
 US 30025
 Contact: BRANDON INMAN
 BRANDON.INMAN@SHIRE.COM

To discuss this sample report, contact Customer Service at 1-800-237-1369.

* - Denotes test methods that are outside of the ISO 17025 scope of accreditation.

Statements of conformity to specifications are based on the simple acceptance decision rule (JCGM 106:2012)

T:
F: