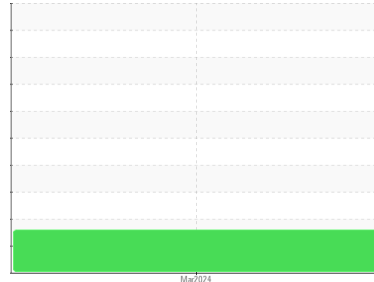




# OIL ANALYSIS REPORT

Sample Rating Trend



ISO



Machine Id  
**991310 (S/N 4953)**  
 Component  
**Hydraulic System**  
 Fluid  
 {not provided} (--- GAL)

## DIAGNOSIS

### Recommendation

No corrective action is recommended at this time. Resample at the next service interval to monitor.

### Wear

All component wear rates are normal.

### Contamination

There is a moderate amount of particulates present in the oil.

### Fluid Condition

The AN level is acceptable for this fluid. The condition of the oil is suitable for further service.

## SAMPLE INFORMATION

|               | method      | limit/base  | current            | history1 | history2 |
|---------------|-------------|-------------|--------------------|----------|----------|
| Sample Number | Client Info |             | <b>PH0002621</b>   | ---      | ---      |
| Sample Date   | Client Info |             | <b>31 Mar 2024</b> | ---      | ---      |
| Machine Age   | days        | Client Info | <b>0</b>           | ---      | ---      |
| Oil Age       | days        | Client Info | <b>0</b>           | ---      | ---      |
| Oil Changed   | Client Info |             | <b>N/A</b>         | ---      | ---      |
| Sample Status |             |             | <b>ATTENTION</b>   | ---      | ---      |

## CONTAMINATION

|       | method    | limit/base | current    | history1 | history2 |
|-------|-----------|------------|------------|----------|----------|
| Water | WC Method | >0.05      | <b>NEG</b> | ---      | ---      |

## WEAR METALS

|          | method | limit/base      | current      | history1 | history2 |
|----------|--------|-----------------|--------------|----------|----------|
| Iron     | ppm    | ASTM D5185m >20 | <b>&lt;1</b> | ---      | ---      |
| Chromium | ppm    | ASTM D5185m >20 | <b>&lt;1</b> | ---      | ---      |
| Nickel   | ppm    | ASTM D5185m >20 | <b>&lt;1</b> | ---      | ---      |
| Titanium | ppm    | ASTM D5185m     | <b>&lt;1</b> | ---      | ---      |
| Silver   | ppm    | ASTM D5185m     | <b>0</b>     | ---      | ---      |
| Aluminum | ppm    | ASTM D5185m >20 | <b>2</b>     | ---      | ---      |
| Lead     | ppm    | ASTM D5185m >20 | <b>1</b>     | ---      | ---      |
| Copper   | ppm    | ASTM D5185m >20 | <b>1</b>     | ---      | ---      |
| Tin      | ppm    | ASTM D5185m >20 | <b>1</b>     | ---      | ---      |
| Vanadium | ppm    | ASTM D5185m     | <b>&lt;1</b> | ---      | ---      |
| Cadmium  | ppm    | ASTM D5185m     | <b>&lt;1</b> | ---      | ---      |

## ADDITIVES

|            | method | limit/base  | current      | history1 | history2 |
|------------|--------|-------------|--------------|----------|----------|
| Boron      | ppm    | ASTM D5185m | <b>1</b>     | ---      | ---      |
| Barium     | ppm    | ASTM D5185m | <b>0</b>     | ---      | ---      |
| Molybdenum | ppm    | ASTM D5185m | <b>2</b>     | ---      | ---      |
| Manganese  | ppm    | ASTM D5185m | <b>&lt;1</b> | ---      | ---      |
| Magnesium  | ppm    | ASTM D5185m | <b>4</b>     | ---      | ---      |
| Calcium    | ppm    | ASTM D5185m | <b>80</b>    | ---      | ---      |
| Phosphorus | ppm    | ASTM D5185m | <b>404</b>   | ---      | ---      |
| Zinc       | ppm    | ASTM D5185m | <b>505</b>   | ---      | ---      |
| Sulfur     | ppm    | ASTM D5185m | <b>1470</b>  | ---      | ---      |

## CONTAMINANTS

|           | method | limit/base      | current      | history1 | history2 |
|-----------|--------|-----------------|--------------|----------|----------|
| Silicon   | ppm    | ASTM D5185m >15 | <b>4</b>     | ---      | ---      |
| Sodium    | ppm    | ASTM D5185m     | <b>&lt;1</b> | ---      | ---      |
| Potassium | ppm    | ASTM D5185m >20 | <b>1</b>     | ---      | ---      |

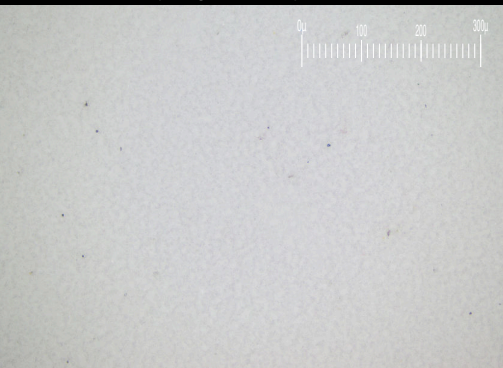
## FLUID CLEANLINESS

|                 | method       | limit/base | current         | history1 | history2 |
|-----------------|--------------|------------|-----------------|----------|----------|
| Particles >4µm  | ASTM D7647   | >10000     | <b>6130</b>     | ---      | ---      |
| Particles >6µm  | ASTM D7647   | >2500      | <b>2243</b>     | ---      | ---      |
| Particles >14µm | ASTM D7647   | >320       | <b>482</b>      | ---      | ---      |
| Particles >21µm | ASTM D7647   | >80        | <b>208</b>      | ---      | ---      |
| Particles >38µm | ASTM D7647   | >20        | <b>24</b>       | ---      | ---      |
| Particles >71µm | ASTM D7647   | >4         | <b>1</b>        | ---      | ---      |
| Oil Cleanliness | ISO 4406 (c) | >20/18/15  | <b>20/18/16</b> | ---      | ---      |

## FLUID DEGRADATION

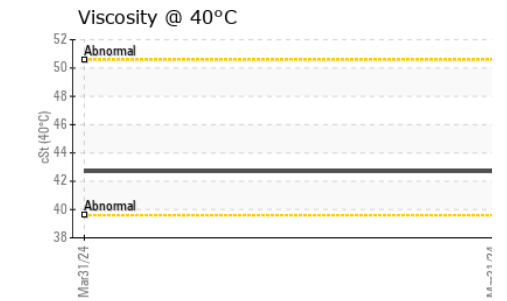
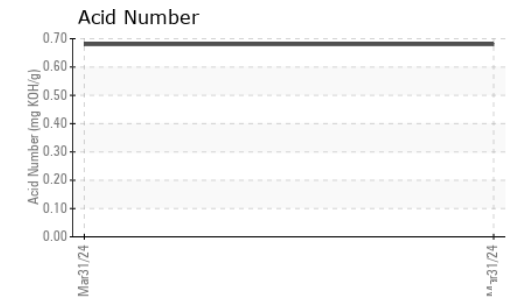
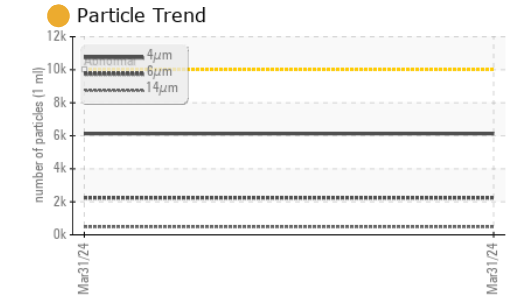
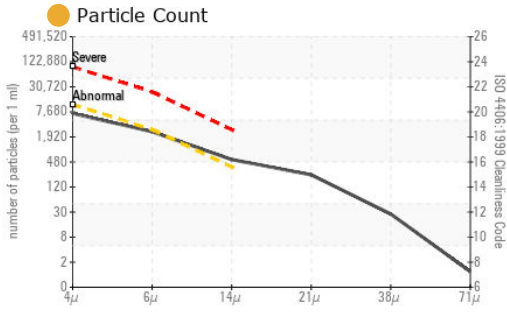
|                  | method   | limit/base | current     | history1 | history2 |
|------------------|----------|------------|-------------|----------|----------|
| Acid Number (AN) | mg KOH/g | ASTM D8045 | <b>0.68</b> | ---      | ---      |

Particle Filter (Magn: 200 x)





# OIL ANALYSIS REPORT



**Laboratory** : WearCheck USA - 501 Madison Ave., Cary, NC 27513  
**Sample No.** : PH0002621 **Received** : 01 Apr 2024  
**Lab Number** : **06135607** **Tested** : 04 Apr 2024  
**Unique Number** : 10955072 **Diagnosed** : 04 Apr 2024 - Jonathan Hester  
**Test Package** : PLANT ( Additional Tests: PrtFilter )

**GULFSTREAM AEROSPACE CORP**  
 500 GULFSTREAM ROAD  
 SAVANNAH, GA  
 US 31408  
 Contact: WILLIAM COIN  
 william.coin@gulfstream.com  
 T: (912)965-8814  
 F: (912)965-5179

To discuss this sample report, contact Customer Service at 1-800-237-1369.

\* - Denotes test methods that are outside of the ISO 17025 scope of accreditation.

Statements of conformity to specifications are based on the simple acceptance decision rule (JCGM 106:2012)

| VISUAL           | method | limit/base | current | history1 | history2 |     |
|------------------|--------|------------|---------|----------|----------|-----|
| White Metal      | scalar | *Visual    | NONE    | NONE     | ---      | --- |
| Yellow Metal     | scalar | *Visual    | NONE    | NONE     | ---      | --- |
| Precipitate      | scalar | *Visual    | NONE    | NONE     | ---      | --- |
| Silt             | scalar | *Visual    | NONE    | NONE     | ---      | --- |
| Debris           | scalar | *Visual    | NONE    | NONE     | ---      | --- |
| Sand/Dirt        | scalar | *Visual    | NONE    | NONE     | ---      | --- |
| Appearance       | scalar | *Visual    | NORML   | NORML    | ---      | --- |
| Odor             | scalar | *Visual    | NORML   | NORML    | ---      | --- |
| Emulsified Water | scalar | *Visual    | >0.05   | NEG      | ---      | --- |
| Free Water       | scalar | *Visual    |         | NEG      | ---      | --- |

| FLUID PROPERTIES | method | limit/base | current | history1 | history2 |
|------------------|--------|------------|---------|----------|----------|
| Visc @ 40°C      | cSt    | ASTM D445  | 42.7    | ---      | ---      |

| SAMPLE IMAGES | method | limit/base | current | history1 | history2 |
|---------------|--------|------------|---------|----------|----------|
|---------------|--------|------------|---------|----------|----------|

|           |  |  |  |          |          |
|-----------|--|--|--|----------|----------|
| Color     |  |  |  | no image | no image |
| Bottom    |  |  |  | no image | no image |
| PrtFilter |  |  |  | no image | no image |

## GRAPHS

