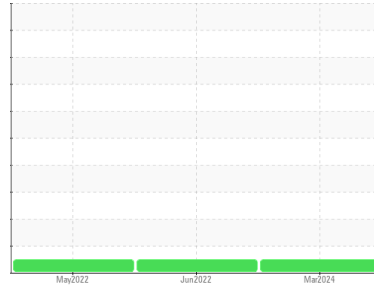




COOLANT REPORT

Sample Rating Trend



NORMAL



Area
THUNDER SPIRIT [200009532]
 Machine Id
03WEA84029 - CONVERTER (S/N 72802187431)
 Component
Coolant
 Fluid
INTERCOOL NEF-65-AA (--- LTR)

DIAGNOSIS

Recommendation

The fluid is suitable for further service.

Corrosion

All metal levels are normal indicating no corrosion in the cooling system.

Contaminants

There is no indication of any contamination in the coolant.

Coolant Condition

Glycol and nitrite levels are acceptable. The pH level of this fluid is within the acceptable limits.

SAMPLE INFORMATION		method	limit/base	current	history1	history2
Sample Number	Client Info			NX014791	NX010555	NX004472
Sample Date	Client Info			11 Mar 2024	30 Jun 2022	06 May 2022
Machine Age	hrs	Client Info		0	44842	0
Oil Age	hrs	Client Info		0	0	0
Oil Changed	Client Info			N/A	N/A	N/A
Sample Status				NORMAL	NORMAL	NORMAL

PHYSICAL TEST RESULTS		method	limit/base	current	history1	history2
Glycol Type	FT-IR			---	---	---
Specific Gravity	*ASTM D1298			1.076	1.076	1.079
pH	Scale 0-14	ASTM D1287		8.20	8.19	7.83
Nitrites	ppm	AP-053:2009		560	412	560
Reserve Alkalinity	Scale 0-20	*ASTM D1121		---	---	---
Percentage Glycol	%	ASTM D3321		56.9	57.3	59.2
Freezing Point	°F	ASTM D3321		-50	-52	-56
Total Dissolved Solids				297.0	283.0	317.5
Carboxylate				n/a	n/a	n/a

CORROSION INHIBITORS		method	limit/base	current	history1	history2
Silicon	ppm	ASTM D6130		21	36	18
Phosphorus	ppm	ASTM D6130		1327	1220	1169
Boron	ppm	ASTM D6130		245	370	443
Molybdenum	ppm	ASTM D6130		51	88	1

CORROSION		method	limit/base	current	history1	history2
Iron	ppm	ASTM D6130	>15	5	<1	0
Aluminum	ppm	ASTM D6130	>10	<1	<1	0
Copper	ppm	ASTM D6130	>10	0	<1	0
Lead	ppm	ASTM D6130	>10	0	0	0
Tin	ppm	ASTM D6130	>10	0	0	0
Zinc	ppm	ASTM D6130		0	<1	0

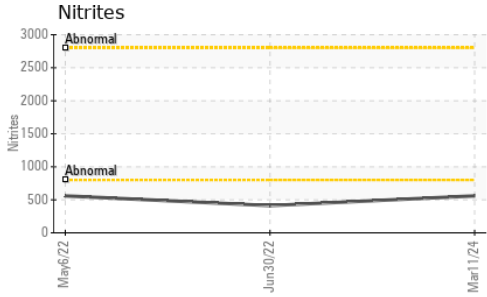
CONTAMINANTS		method	limit/base	current	history1	history2
Chlorine	ppm	ASTM D6130		20	8	0

CARRIER SALTS		method	limit/base	current	history1	history2
Sodium	ppm	ASTM D6130		472	406	352
Potassium	ppm	ASTM D6130		4332	2379	2531

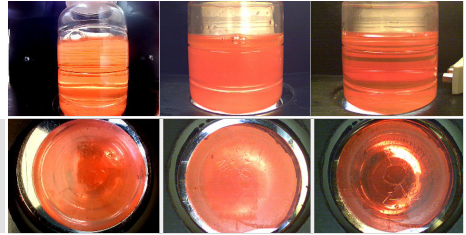
SCALE POTENTIAL		method	limit/base	current	history1	history2
Calcium	ppm	ASTM D6130	>100	0	0	0
Magnesium	ppm	ASTM D6130	>40	0	0	2
Hardness	mg/L CaCO3	*In-house	<75	0	0	---



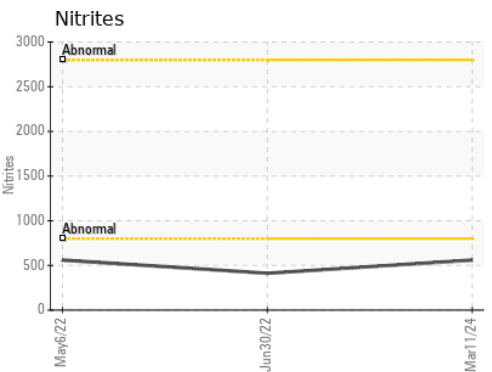
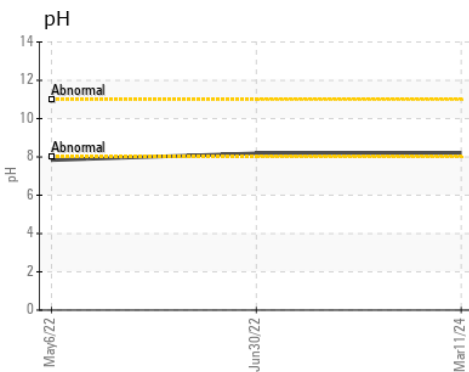
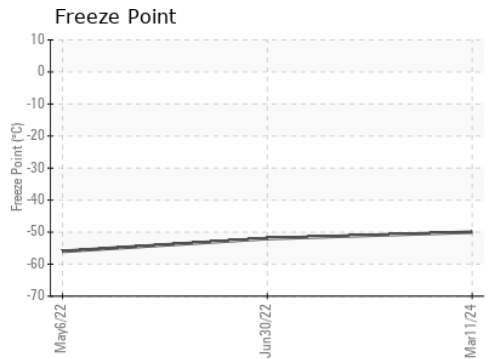
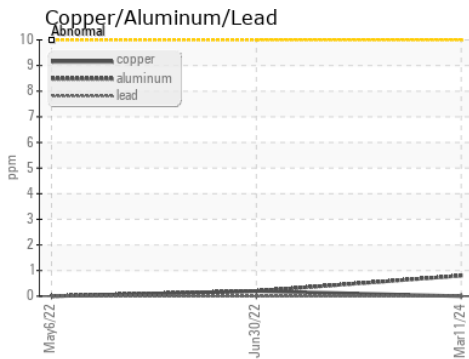
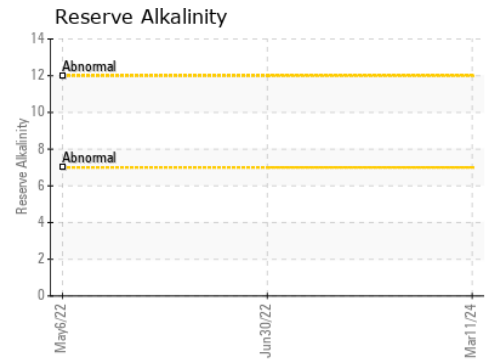
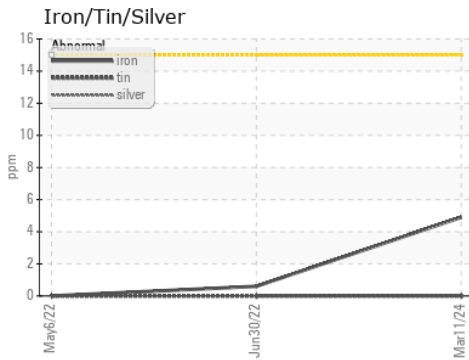
COOLANT REPORT



VISUAL	method	limit/base	current	history1	history2
Coolant Color	*Visual		Orange	Orange	Orange
Coolant Appearance	*Visual	Clear	normal	normal	normal
Color					
Bottom					



GRAPHS



Laboratory : WearCheck USA - 501 Madison Ave., Cary, NC 27513
Sample No. : NX014791 **Received** : 01 Apr 2024
Lab Number : **06135986** **Tested** : 05 Apr 2024
Unique Number : 10955451 **Diagnosed** : 05 Apr 2024 - Jonathan Hester
Test Package : COOL (Additional Tests: GlycolType)

NORDEX USA - Chicago
 300 SOUTH WACKER DRIVE, SUITE 1500
 CHICAGO, IL 60606

To discuss this sample report, contact Customer Service at 1-800-237-1369.
 * - Denotes test methods that are outside of the ISO 17025 scope of accreditation.
 Statements of conformity to specifications are based on the simple acceptance decision rule (JCGM 106:2012)

Contact: DEVIN LINEHAN
 DLinehan@nordex-online.com
 T: (312)386-4124
 F: (312)386-7102