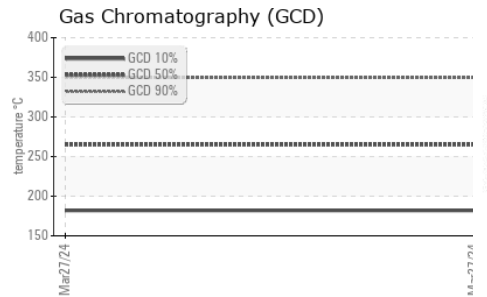
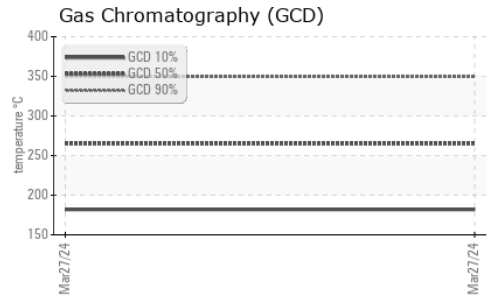
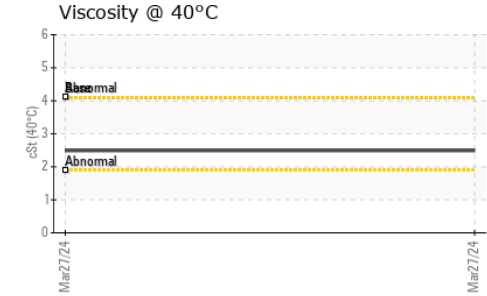
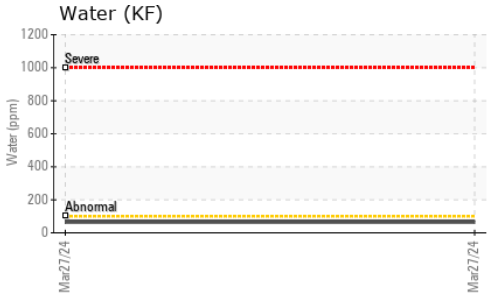



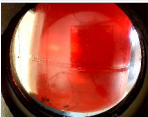




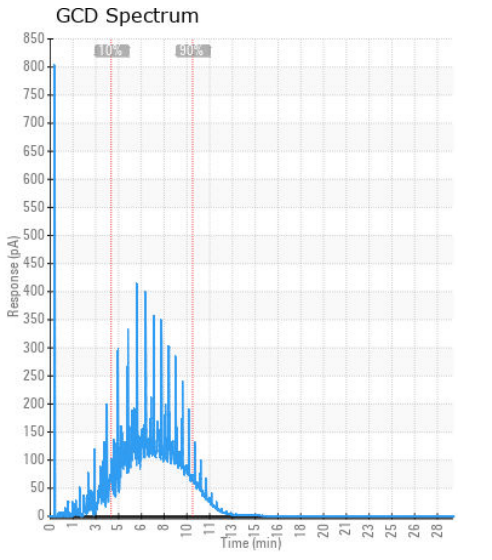
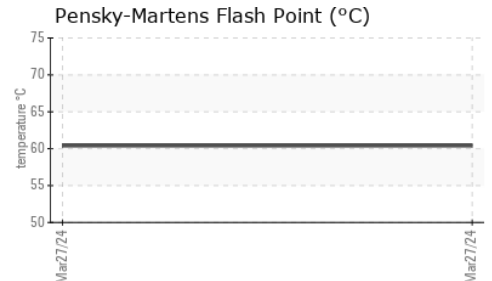
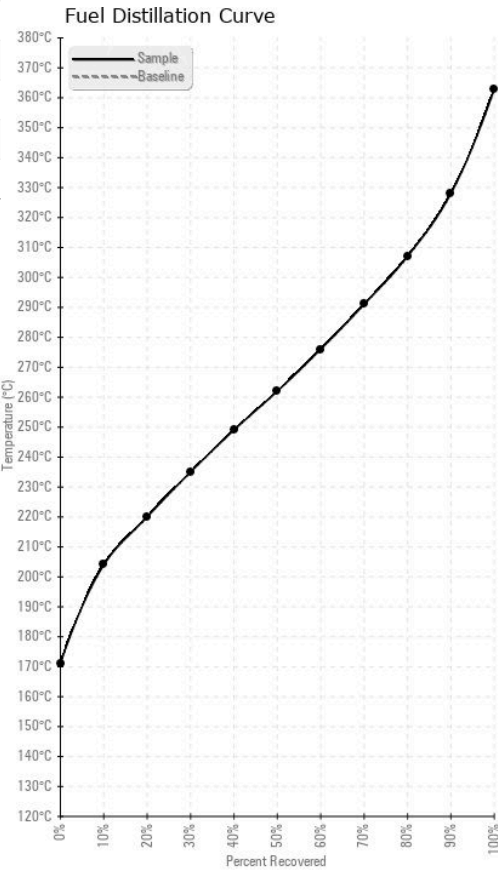
# FUEL REPORT



HEAVY METALS		method	limit/base	current	history1	history2
Aluminum	ppm	ASTM D5185m	<0.1	0	---	---
Nickel	ppm	ASTM D5185m	<0.1	0	---	---
Lead	ppm	ASTM D5185m	<0.1	0	---	---
Vanadium	ppm	ASTM D5185m	<0.1	0	---	---
Iron	ppm	ASTM D5185m	<0.1	0	---	---
Calcium	ppm	ASTM D5185m	<0.1	0	---	---
Magnesium	ppm	ASTM D5185m	<0.1	0	---	---
Phosphorus	ppm	ASTM D5185m	<0.1	0	---	---
Zinc	ppm	ASTM D5185m	<0.1	0	---	---

SAMPLE IMAGES		method	limit/base	current	history1	history2
Color				no image	no image	
Bottom				no image	no image	

## GRAPHS



**Laboratory** : WearCheck USA - 501 Madison Ave., Cary, NC 27513  
**Sample No.** : WC0914191      **Received** : 03 Apr 2024  
**Lab Number** : **06138206**      **Tested** : 15 Apr 2024  
**Unique Number** : 10963014      **Diagnosed** : 15 Apr 2024 - Doug Bogart  
**Test Package** : DF-2 ( Additional Tests: Fuel, Screen )

**VITAL FUEL SYSTEMS**  
 1076 CLASSIC RD  
 APEX, NC  
 US 27539  
 Contact: SERVICE  
 service@vitalfuelsystems.com  
 T: (919)629-8180  
 F: (919)303-7399

To discuss this sample report, contact Customer Service at 1-800-237-1369.

\* - Denotes test methods that are outside of the ISO 17025 scope of accreditation.

Statements of conformity to specifications are based on the simple acceptance decision rule (JCGM 106:2012)