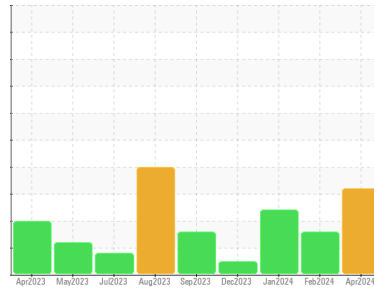




OIL ANALYSIS REPORT

Sample Rating Trend



WATER



Machine Id
LINE 2 STOBER
 Component
Gearbox
 Fluid
Gearbox Oil (--- QTS)

DIAGNOSIS

Recommendation

We advise that you check for the source of water entry. We recommend you service the filters on this component if applicable. We recommend an early resample to monitor this condition. We were unable to perform a particle count due to a high concentration of particles present in this sample.

Wear

Gear wear is indicated.

Contamination

There is a moderate concentration of water present in the oil. There is a moderate amount of visible silt present in the sample.

Fluid Condition

The AN level is acceptable for this fluid.

SAMPLE INFORMATION

method	limit/base	current	history1	history2
Sample Number	Client Info	WC0866767	WC0820512	WC0866803
Sample Date	Client Info	03 Apr 2024	04 Feb 2024	29 Jan 2024
Machine Age	hrs	Client Info	0	0
Oil Age	hrs	Client Info	0	0
Oil Changed	Client Info	N/A	N/A	N/A
Sample Status		ABNORMAL	ABNORMAL	ABNORMAL

WEAR METALS

method	limit/base	current	history1	history2	
Iron	ppm	ASTM D5185m >200	▲ 251	154	149
Chromium	ppm	ASTM D5185m >15	2	<1	<1
Nickel	ppm	ASTM D5185m >15	<1	<1	<1
Titanium	ppm	ASTM D5185m	<1	0	<1
Silver	ppm	ASTM D5185m	0	0	0
Aluminum	ppm	ASTM D5185m >25	2	<1	2
Lead	ppm	ASTM D5185m >100	0	0	0
Copper	ppm	ASTM D5185m >200	<1	0	<1
Tin	ppm	ASTM D5185m >25	<1	0	<1
Vanadium	ppm	ASTM D5185m	<1	0	<1
Cadmium	ppm	ASTM D5185m	0	0	0

ADDITIVES

method	limit/base	current	history1	history2	
Boron	ppm	ASTM D5185m	0	0	0
Barium	ppm	ASTM D5185m	0	0	0
Molybdenum	ppm	ASTM D5185m	0	0	<1
Manganese	ppm	ASTM D5185m	3	2	2
Magnesium	ppm	ASTM D5185m	1	<1	<1
Calcium	ppm	ASTM D5185m	8	<1	4
Phosphorus	ppm	ASTM D5185m	710	519	461
Zinc	ppm	ASTM D5185m	4	5	0
Sulfur	ppm	ASTM D5185m	802	519	509

CONTAMINANTS

method	limit/base	current	history1	history2	
Silicon	ppm	ASTM D5185m >50	11	4	6
Sodium	ppm	ASTM D5185m	6	<1	<1
Potassium	ppm	ASTM D5185m >20	2	0	3
Water	%	ASTM D6304 >0.2	▲ 0.550	▲ 0.364	▲ 0.270
ppm Water	ppm	ASTM D6304 >2000	▲ 5500	▲ 3640	▲ 2700

FLUID CLEANLINESS

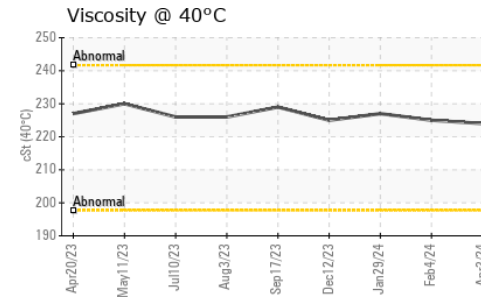
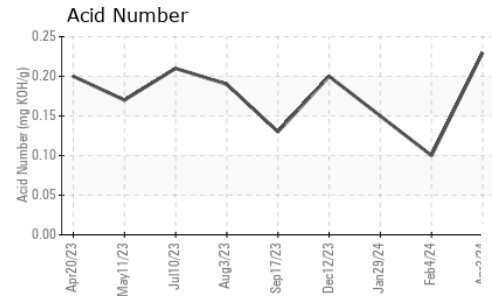
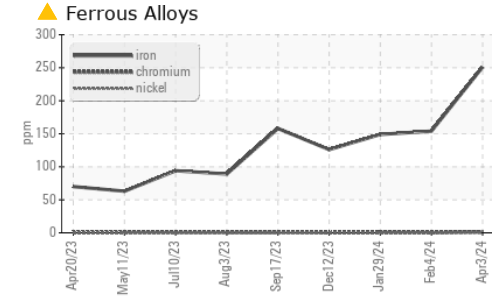
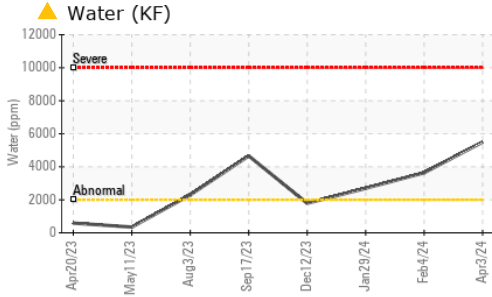
method	limit/base	current	history1	history2
Particles >4µm	ASTM D7647 >20000	---	3384	---
Particles >6µm	ASTM D7647 >5000	---	1844	---
Particles >14µm	ASTM D7647 >640	---	314	---
Particles >21µm	ASTM D7647 >160	---	106	---
Particles >38µm	ASTM D7647 >40	---	16	---
Particles >71µm	ASTM D7647 >10	---	2	---
Oil Cleanliness	ISO 4406 (c) >21/19/16	---	19/18/15	---

FLUID DEGRADATION

method	limit/base	current	history1	history2	
Acid Number (AN)	mg KOH/g	ASTM D8045	0.23	0.10	0.15



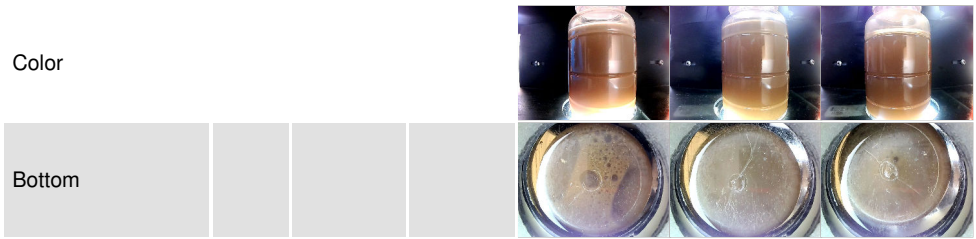
OIL ANALYSIS REPORT



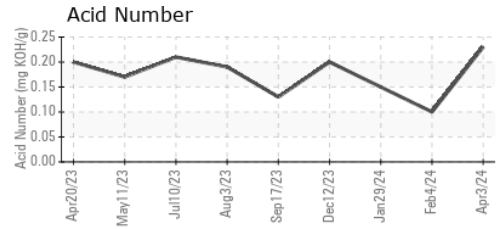
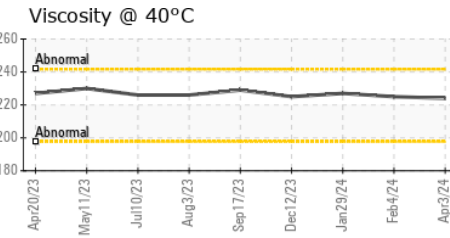
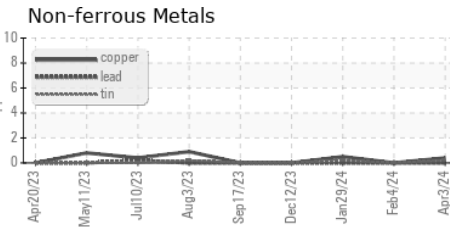
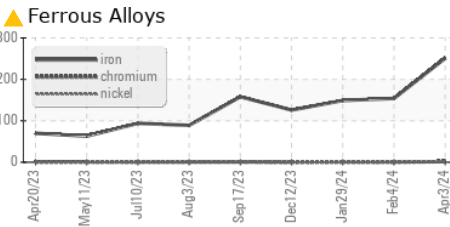
VISUAL	method	limit/base	current	history1	history2
White Metal	scalar	*Visual	NONE	NONE	NONE
Yellow Metal	scalar	*Visual	NONE	NONE	NONE
Precipitate	scalar	*Visual	NONE	NONE	NONE
Silt	scalar	*Visual	▲ MODER	NONE	▲ MODER
Debris	scalar	*Visual	NONE	NONE	NONE
Sand/Dirt	scalar	*Visual	NONE	NONE	NONE
Appearance	scalar	*Visual	NORML	NORML	NORML
Odor	scalar	*Visual	NORML	NORML	NORML
Emulsified Water	scalar	*Visual	>0.2	0.2%	0.2%
Free Water	scalar	*Visual	NEG	NEG	NEG

FLUID PROPERTIES	method	limit/base	current	history1	history2
Visc @ 40°C	cSt	ASTM D445	224	225	227

SAMPLE IMAGES	method	limit/base	current	history1	history2
---------------	--------	------------	---------	----------	----------



GRAPHS



Certificate L2367

Laboratory : WearCheck USA - 501 Madison Ave., Cary, NC 27513
Sample No. : WC0866767
Lab Number : 06138521
Unique Number : 10963329
Test Package : IND 2 (Additional Tests: KF, PrtCount)
Received : 04 Apr 2024
Tested : 09 Apr 2024
Diagnosed : 09 Apr 2024 - Jonathan Hester

To discuss this sample report, contact Customer Service at 1-800-237-1369.

* - Denotes test methods that are outside of the ISO 17025 scope of accreditation.

Statements of conformity to specifications are based on the simple acceptance decision rule (JCGM 106:2012)

HORMEL FOODS KXV
 209 N GODFREY LN
 KNOXVILLE, IA
 US 50138

Contact: MATT WILLIAMS
 MAWILLIAMS@HORMEL.COM

T: (641)842-6841

F: (641)842-3354