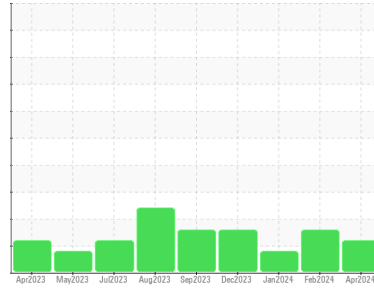




# OIL ANALYSIS REPORT

Sample Rating Trend



ISO



Machine Id  
**LINE 4 STOBER**  
 Component  
**Gearbox**  
 Fluid  
**Gearbox Oil (--- QTS)**

## DIAGNOSIS

### Recommendation

We recommend you service the filters on this component if applicable. Resample at the next service interval to monitor.

### Wear

All component wear rates are normal.

### Contamination

There is a high amount of silt (particulates < 14 microns in size) present in the oil.

### Fluid Condition

The AN level is acceptable for this fluid. The condition of the oil is suitable for further service.

## SAMPLE INFORMATION

	method	limit/base	current	history1	history2
Sample Number	Client Info		<b>WC0866769</b>	WC0866800	WC0866804
Sample Date	Client Info		<b>03 Apr 2024</b>	04 Feb 2024	29 Jan 2024
Machine Age	hrs	Client Info	<b>0</b>	0	0
Oil Age	hrs	Client Info	<b>0</b>	0	0
Oil Changed	Client Info		<b>N/A</b>	N/A	N/A
Sample Status			<b>ABNORMAL</b>	ABNORMAL	ABNORMAL

## CONTAMINATION

	method	limit/base	current	history1	history2
Water	WC Method	>0.2	<b>NEG</b>	NEG	NEG

## WEAR METALS

	method	limit/base	current	history1	history2
Iron	ppm	ASTM D5185m >200	<b>33</b>	194	195
Chromium	ppm	ASTM D5185m >15	<b>&lt;1</b>	<1	<1
Nickel	ppm	ASTM D5185m >15	<b>0</b>	<1	<1
Titanium	ppm	ASTM D5185m	<b>&lt;1</b>	0	<1
Silver	ppm	ASTM D5185m	<b>0</b>	0	0
Aluminum	ppm	ASTM D5185m >25	<b>2</b>	<1	2
Lead	ppm	ASTM D5185m >100	<b>0</b>	0	<1
Copper	ppm	ASTM D5185m >200	<b>&lt;1</b>	0	<1
Tin	ppm	ASTM D5185m >25	<b>&lt;1</b>	0	0
Vanadium	ppm	ASTM D5185m	<b>&lt;1</b>	0	<1
Cadmium	ppm	ASTM D5185m	<b>0</b>	0	0

## ADDITIVES

	method	limit/base	current	history1	history2
Boron	ppm	ASTM D5185m	<b>0</b>	0	0
Barium	ppm	ASTM D5185m	<b>0</b>	0	0
Molybdenum	ppm	ASTM D5185m	<b>0</b>	0	<1
Manganese	ppm	ASTM D5185m	<b>&lt;1</b>	2	2
Magnesium	ppm	ASTM D5185m	<b>&lt;1</b>	<1	<1
Calcium	ppm	ASTM D5185m	<b>7</b>	0	15
Phosphorus	ppm	ASTM D5185m	<b>477</b>	488	649
Zinc	ppm	ASTM D5185m	<b>&lt;1</b>	2	0
Sulfur	ppm	ASTM D5185m	<b>503</b>	513	786

## CONTAMINANTS

	method	limit/base	current	history1	history2
Silicon	ppm	ASTM D5185m >50	<b>9</b>	3	6
Sodium	ppm	ASTM D5185m	<b>2</b>	0	4
Potassium	ppm	ASTM D5185m >20	<b>2</b>	0	3

## FLUID CLEANLINESS

	method	limit/base	current	history1	history2
Particles >4µm	ASTM D7647	>20000	<b>▲ 132794</b>	5063	---
Particles >6µm	ASTM D7647	>5000	<b>▲ 18238</b>	2758	---
Particles >14µm	ASTM D7647	>640	<b>59</b>	469	---
Particles >21µm	ASTM D7647	>160	<b>10</b>	158	---
Particles >38µm	ASTM D7647	>40	<b>0</b>	24	---
Particles >71µm	ASTM D7647	>10	<b>0</b>	2	---
Oil Cleanliness	ISO 4406 (c)	>21/19/16	<b>▲ 24/21/13</b>	20/19/16	---

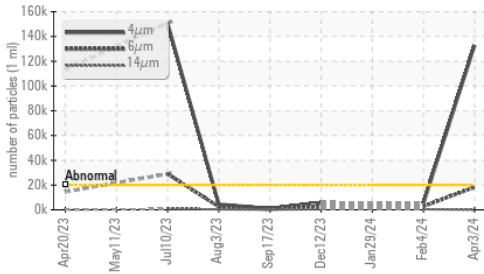
## FLUID DEGRADATION

	method	limit/base	current	history1	history2
Acid Number (AN)	mg KOH/g	ASTM D8045	<b>0.28</b>	0.10	0.18

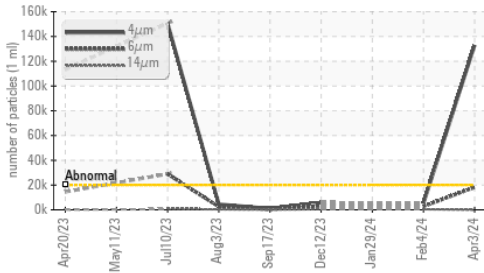


# OIL ANALYSIS REPORT

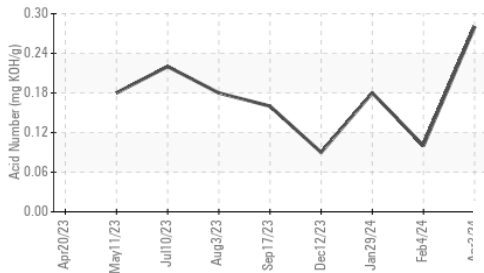
▲ Particle Trend



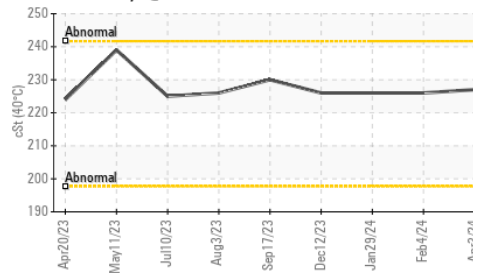
▲ Particle Trend



Acid Number



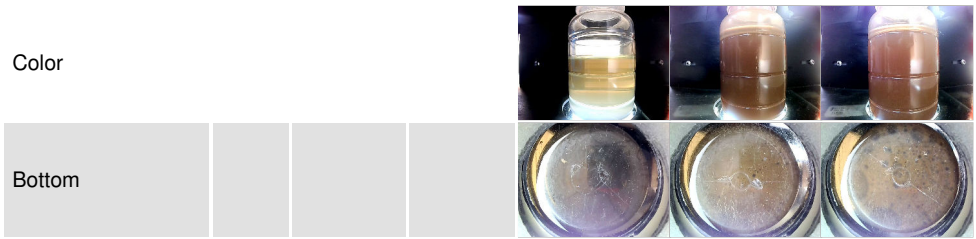
Viscosity @ 40°C



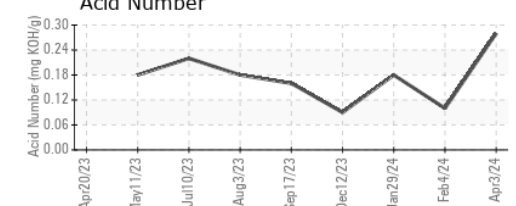
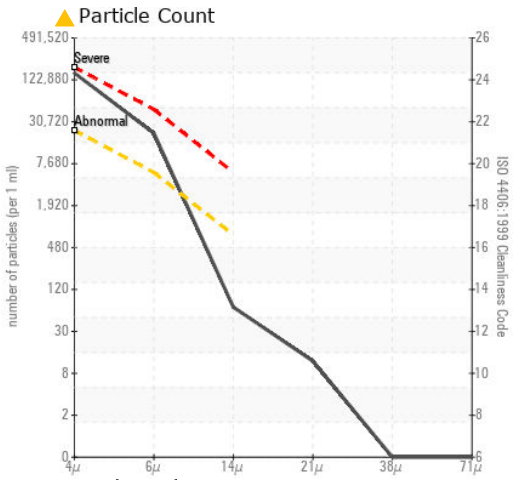
VISUAL	method	limit/base	current	history1	history2
White Metal	scalar	*Visual	NONE	NONE	NONE
Yellow Metal	scalar	*Visual	NONE	NONE	NONE
Precipitate	scalar	*Visual	NONE	NONE	NONE
Silt	scalar	*Visual	NONE	NONE	▲ MODER
Debris	scalar	*Visual	NONE	NONE	NONE
Sand/Dirt	scalar	*Visual	NONE	NONE	NONE
Appearance	scalar	*Visual	NORML	NORML	NORML
Odor	scalar	*Visual	NORML	NORML	NORML
Emulsified Water	scalar	*Visual	>0.2	NEG	0.2%
Free Water	scalar	*Visual		NEG	NEG

FLUID PROPERTIES	method	limit/base	current	history1	history2
Visc @ 40°C	cSt	ASTM D445	227	226	226

SAMPLE IMAGES	method	limit/base	current	history1	history2
---------------	--------	------------	---------	----------	----------



## GRAPHS



**Laboratory** : WearCheck USA - 501 Madison Ave., Cary, NC 27513  
**Sample No.** : WC0866769 **Received** : 04 Apr 2024  
**Lab Number** : 06138522 **Tested** : 05 Apr 2024  
**Unique Number** : 10963330 **Diagnosed** : 06 Apr 2024 - Don Baldrige  
**Test Package** : IND 2 ( Additional Tests: PrtCount )

**HORMEL FOODS KXV**  
 209 N GODFREY LN  
 KNOXVILLE, IA  
 US 50138  
 Contact: MATT WILLIAMS  
 MAWILLIAMS@HORMEL.COM  
 T: (641)842-6841  
 F: (641)842-3354

To discuss this sample report, contact Customer Service at 1-800-237-1369.  
 \* - Denotes test methods that are outside of the ISO 17025 scope of accreditation.  
 Statements of conformity to specifications are based on the simple acceptance decision rule (JCGM 106:2012)