

Area

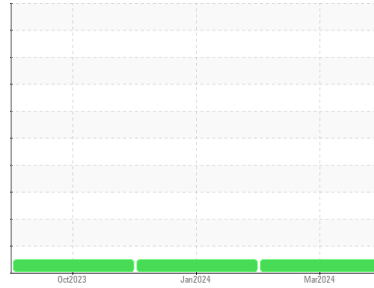
**PLURASAFE CL**

Machine Id

**SULLIVAN PALATEK 1703280006 - WYNNE AR**

Component

**Compressor**



**DIAGNOSIS**

**Recommendation**

Resample at the next service interval to monitor.

**Wear**

All component wear rates are normal.

**Contamination**

There is no indication of any contamination in the oil.

**Fluid Condition**

The AN level is acceptable for this fluid. The condition of the oil is suitable for further service.

**SAMPLE INFORMATION**

	method	limit/base	current	history1	history2
Sample Number	Client Info		<b>UCS06138664</b>	UCS06059393	UCS06009747
Sample Date	Client Info		<b>28 Mar 2024</b>	10 Jan 2024	17 Oct 2023
Machine Age	hrs	Client Info	<b>25459</b>	24885	24211
Oil Age	hrs	Client Info	<b>1248</b>	674	0
Oil Changed		Client Info	<b>Not Chngd</b>	Not Chngd	Changed
Sample Status			<b>NORMAL</b>	NORMAL	NORMAL

**CONTAMINATION**

	method	limit/base	current	history1	history2
Water	WC Method	>0.8	<b>NEG</b>	NEG	NEG

**WEAR METALS**

	method	limit/base	current	history1	history2
Iron	ppm	ASTM D5185m >50	<b>0</b>	0	0
Chromium	ppm	ASTM D5185m >10	<b>0</b>	0	0
Nickel	ppm	ASTM D5185m	<b>0</b>	2	0
Titanium	ppm	ASTM D5185m	<b>0</b>	0	0
Silver	ppm	ASTM D5185m	<b>0</b>	<1	0
Aluminum	ppm	ASTM D5185m >25	<b>0</b>	<1	0
Lead	ppm	ASTM D5185m >25	<b>0</b>	<1	0
Copper	ppm	ASTM D5185m >50	<b>&lt;1</b>	<1	<1
Tin	ppm	ASTM D5185m >15	<b>&lt;1</b>	<1	<1
Vanadium	ppm	ASTM D5185m	<b>&lt;1</b>	<1	<1
Cadmium	ppm	ASTM D5185m	<b>0</b>	0	0

**ADDITIVES**

	method	limit/base	current	history1	history2
Boron	ppm	ASTM D5185m 2	<b>0</b>	0	0
Barium	ppm	ASTM D5185m 525	<b>266</b>	293	491
Molybdenum	ppm	ASTM D5185m 10	<b>0</b>	0	0
Manganese	ppm	ASTM D5185m	<b>0</b>	<1	0
Magnesium	ppm	ASTM D5185m 5	<b>0</b>	2	0
Calcium	ppm	ASTM D5185m 10	<b>&lt;1</b>	2	<1
Phosphorus	ppm	ASTM D5185m 250	<b>105</b>	135	132
Zinc	ppm	ASTM D5185m 100	<b>9</b>	0	2
Sulfur	ppm	ASTM D5185m 400	<b>430</b>	401	393

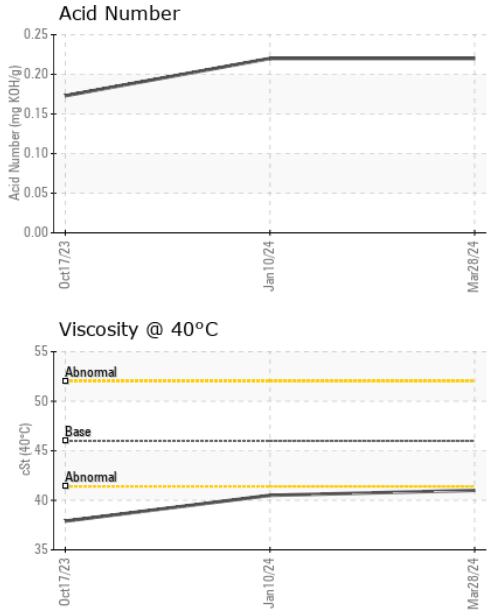
**CONTAMINANTS**

	method	limit/base	current	history1	history2
Silicon	ppm	ASTM D5185m >25	<b>&lt;1</b>	<1	<1
Sodium	ppm	ASTM D5185m	<b>49</b>	36	3
Potassium	ppm	ASTM D5185m >20	<b>&lt;1</b>	<1	<1

**FLUID DEGRADATION**

	method	limit/base	current	history1	history2
Acid Number (AN)	mg KOH/g	ASTM D8045	<b>0.22</b>	0.22	0.173

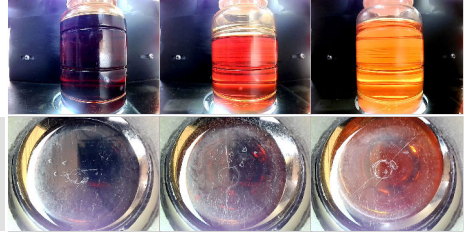
# OIL ANALYSIS REPORT



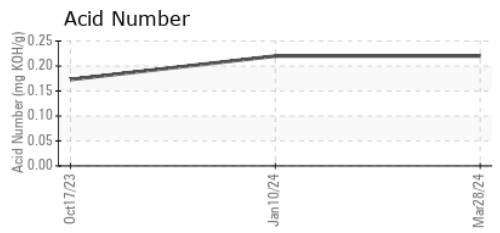
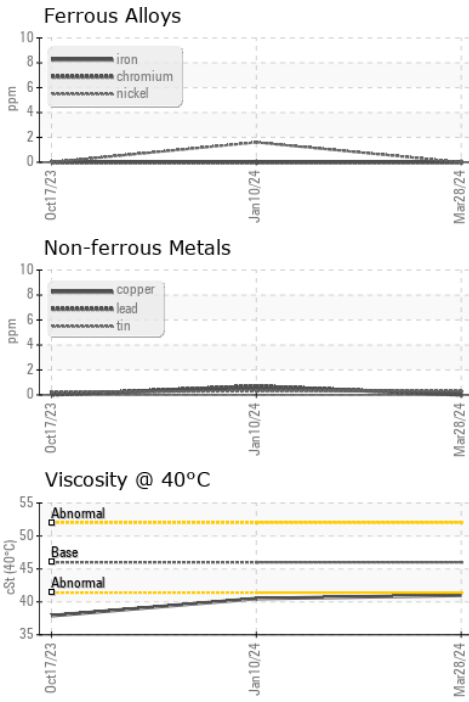
VISUAL	method	limit/base	current	history1	history2
White Metal	scalar	*Visual	NONE	NONE	NONE
Yellow Metal	scalar	*Visual	NONE	NONE	NONE
Precipitate	scalar	*Visual	NONE	NONE	NONE
Silt	scalar	*Visual	NONE	NONE	NONE
Debris	scalar	*Visual	NONE	NONE	NONE
Sand/Dirt	scalar	*Visual	NONE	NONE	NONE
Appearance	scalar	*Visual	NORML	NORML	NORML
Odor	scalar	*Visual	NORML	NORML	NORML
Emulsified Water	scalar	*Visual	>0.8	NEG	NEG
Free Water	scalar	*Visual		NEG	NEG

FLUID PROPERTIES	method	limit/base	current	history1	history2
Visc @ 40°C	cSt	ASTM D445 46	<b>41.0</b>	40.5	37.9

SAMPLE IMAGES	method	limit/base	current	history1	history2
Color					
Bottom					



## GRAPHS



**Laboratory** : WearCheck USA - 501 Madison Ave., Cary, NC 27513  
**Sample No.** : UCS06138664      **Received** : 04 Apr 2024  
**Lab Number** : **06138664**      **Tested** : 05 Apr 2024  
**Unique Number** : 10963472      **Diagnosed** : 06 Apr 2024 - Don Baldrige  
**Test Package** : IND 2

**BLAKE AND PENDLETON**  
 MEMPHIS, TN  
 US 38133  
 Contact: JAY GIANNINI  
 JGIANNINI@BLAKEANDPENDLETON.COM

To discuss this sample report, contact Customer Service at 1-800-237-1369.

\* - Denotes test methods that are outside of the ISO 17025 scope of accreditation.  
 Statements of conformity to specifications are based on the simple acceptance decision rule (JCGM 106:2012)