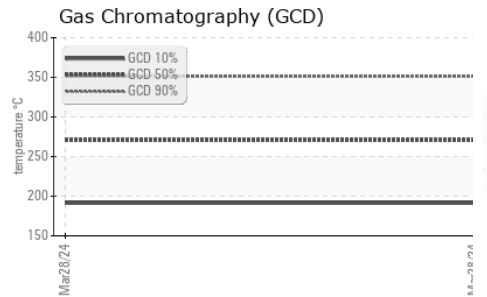
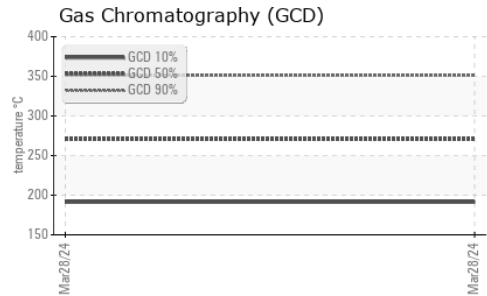
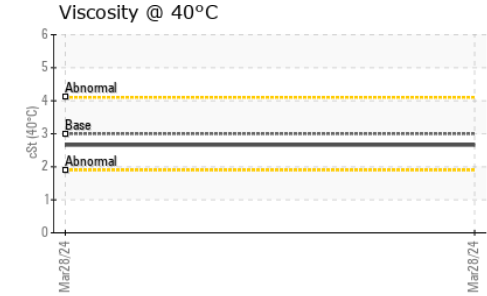
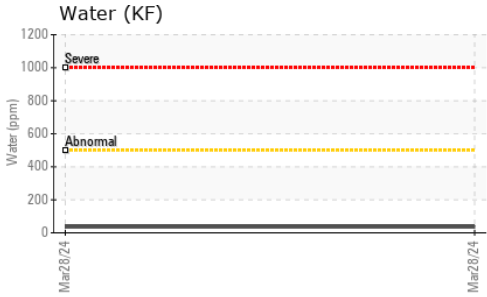






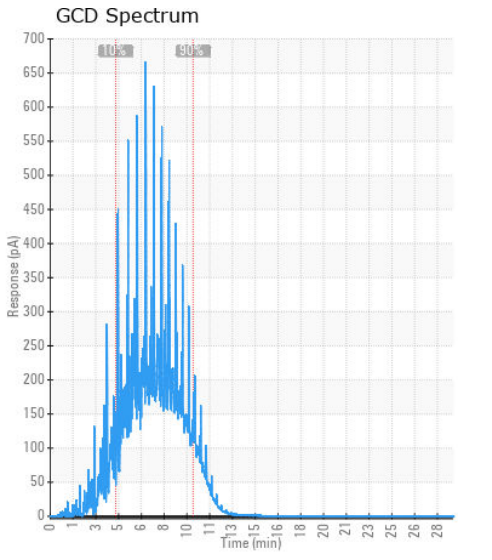
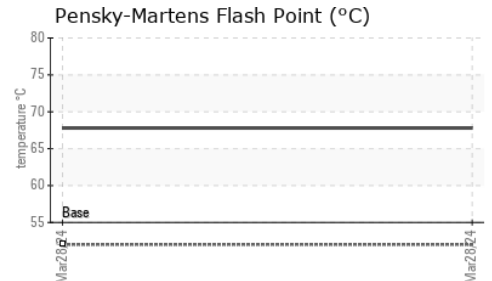
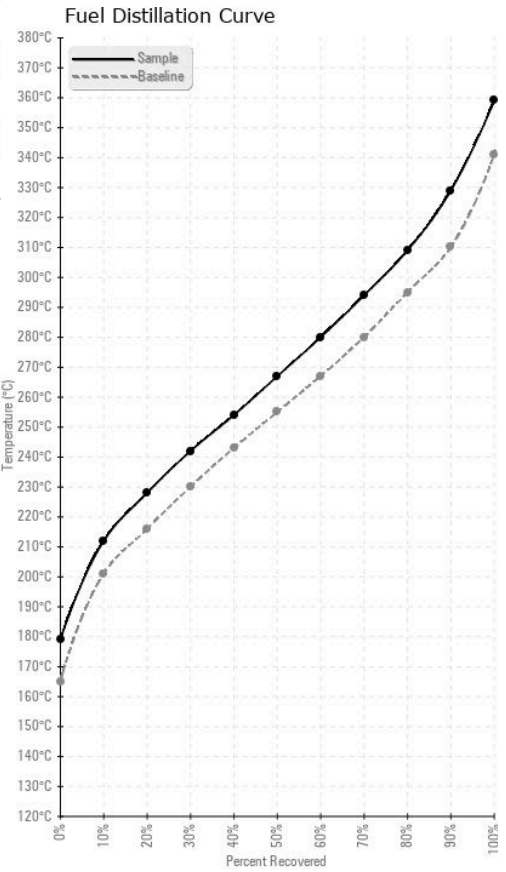
# FUEL REPORT



HEAVY METALS	method	limit/base	current	history1	history2
Aluminum	ppm	ASTM D5185m <0.1	0	---	---
Nickel	ppm	ASTM D5185m <0.1	0	---	---
Lead	ppm	ASTM D5185m <0.1	0	---	---
Vanadium	ppm	ASTM D5185m <0.1	0	---	---
Iron	ppm	ASTM D5185m <0.1	0	---	---
Calcium	ppm	ASTM D5185m <0.1	0	---	---
Magnesium	ppm	ASTM D5185m <0.1	0	---	---
Phosphorus	ppm	ASTM D5185m <0.1	0	---	---
Zinc	ppm	ASTM D5185m <0.1	0	---	---

SAMPLE IMAGES	method	limit/base	current	history1	history2
Color				no image	no image
Bottom				no image	no image

## GRAPHS



**Laboratory** : WearCheck USA - 501 Madison Ave., Cary, NC 27513  
**Sample No.** : WCDF4582      **Received** : 04 Apr 2024  
**Lab Number** : 06139424      **Tested** : 15 Apr 2024  
**Unique Number** : 10964232      **Diagnosed** : 15 Apr 2024 - Doug Bogart  
**Test Package** : DF-2 ( Additional Tests: CldPt, Fuel, Screen )

**TANK WIZARDS**  
 1511 MASTERS RD NW  
 PALM BAY, FL  
 US 32907  
 Contact: WENDALL STRODERD  
 wendall@tankwizards.com

To discuss this sample report, contact Customer Service at 1-800-237-1369.  
 \* - Denotes test methods that are outside of the ISO 17025 scope of accreditation.  
 Statements of conformity to specifications are based on the simple acceptance decision rule (JCGM 106:2012)