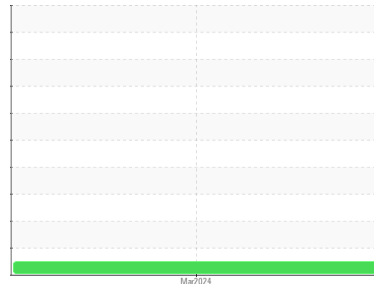




# FUEL REPORT

Sample Rating Trend



**NORMAL**



Machine Id  
**STEWARD HEALTH CARE - MPMC DAY TANK 1**  
 Component  
**Tank Diesel Fuel**  
 Fluid  
**No.2 DIESEL FUEL (ULTRALOW SULPHUR) (275 GAL)**

## DIAGNOSIS

### Recommendation

All laboratory tests indicate that this sample meets specifications for No.2 diesel fuel.

### Corrosion

All metal levels are normal indicating no corrosion in the system.

### Contaminants

There is no bacteria or fungus (yeast and/or mold) indicated in the sample. The water content is negligible. There is no indication of any contamination in the fuel.

### Fuel Condition

Sulfur value derived by ASTM D5453 method for ULSD validation.

SAMPLE INFORMATION		method	limit/base	current	history1	history2
Sample Number	Client Info			<b>WCDF4581</b>	---	---
Sample Date	Client Info			<b>28 Mar 2024</b>	---	---
Machine Age	mls	Client Info		<b>0</b>	---	---
Sample Status				<b>NORMAL</b>	---	---

PHYSICAL PROPERTIES		method	limit/base	current	history1	history2
Fuel Color	text	*Visual Screen	Yellow	<b>Red</b>	---	---
ASTM Color	scalar	*ASTM D1500		<b>L4.5</b>	---	---
Visc @ 40°C	cSt	ASTM D445	3.0	<b>2.73</b>	---	---
Pensky-Martens Flash Point	°C	*PMCC Calculated	52	<b>70.4</b>	---	---
Cloud Point	°C	ASTM D5771		<b>-12</b>	---	---

SULFUR CONTENT		method	limit/base	current	history1	history2
Sulfur	ppm	ASTM D5185m	10	<b>938</b>	---	---
Sulfur (UVF)	ppm	ASTM D5453		<b>795</b>	---	---

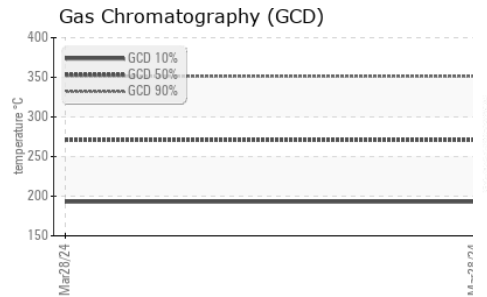
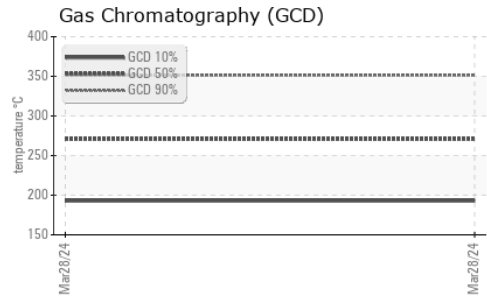
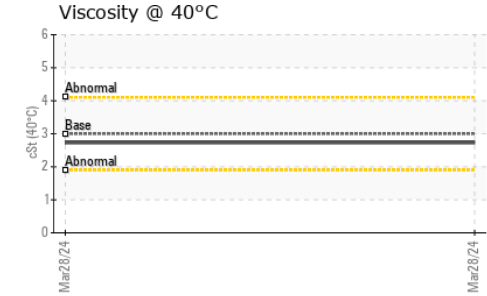
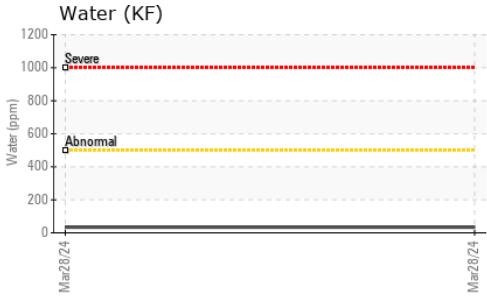
DISTILLATION		method	limit/base	current	history1	history2
Initial Boiling Point	°C	ASTM D86	165	<b>183</b>	---	---
5% Distillation Point	°C	ASTM D86		<b>205</b>	---	---
10% Distill Point	°C	ASTM D86	201	<b>213</b>	---	---
15% Distillation Point	°C	ASTM D86		<b>221</b>	---	---
20% Distill Point	°C	ASTM D86	216	<b>228</b>	---	---
30% Distill Point	°C	ASTM D86	230	<b>242</b>	---	---
40% Distill Point	°C	ASTM D86	243	<b>255</b>	---	---
50% Distill Point	°C	ASTM D86	255	<b>267</b>	---	---
60% Distill Point	°C	ASTM D86	267	<b>281</b>	---	---
70% Distill Point	°C	ASTM D86	280	<b>294</b>	---	---
80% Distill Point	°C	ASTM D86	295	<b>309</b>	---	---
85% Distillation Point	°C	ASTM D86		<b>319</b>	---	---
90% Distill Point	°C	ASTM D86	310	<b>330</b>	---	---
95% Distillation Point	°C	ASTM D86		<b>345</b>	---	---
Final Boiling Point	°C	ASTM D86	341	<b>359</b>	---	---

IGNITION QUALITY		method	limit/base	current	history1	history2
API Gravity		ASTM D7777	37.7	<b>36</b>	---	---
Cetane Index		ASTM D4737	<40.0	<b>48</b>	---	---


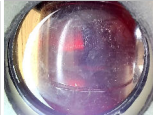
CONTAMINANTS		method	limit/base	current	history1	history2
Silicon	ppm	ASTM D5185m	<1.0	<b>0</b>	---	---
Sodium	ppm	ASTM D5185m	<0.1	<b>&lt;1</b>	---	---
Potassium	ppm	ASTM D5185m	<0.1	<b>0</b>	---	---
Water	%	ASTM D6304	<0.05	<b>0.003</b>	---	---
ppm Water	ppm	ASTM D6304	<500	<b>34</b>	---	---
% Gasoline	%	*In-House	<0.50	<b>0.0</b>	---	---
% Biodiesel	%	*In-House	<20.0	<b>0.0</b>	---	---



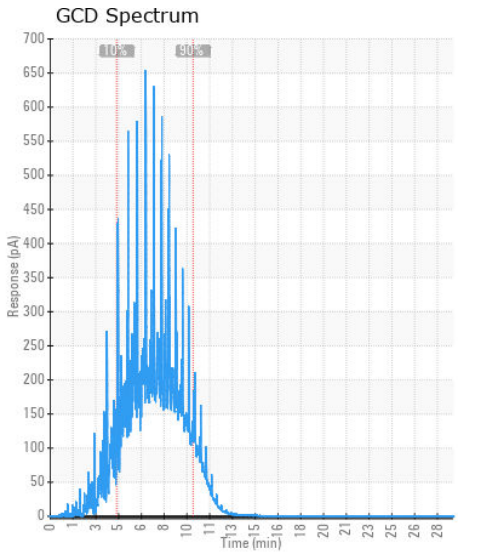
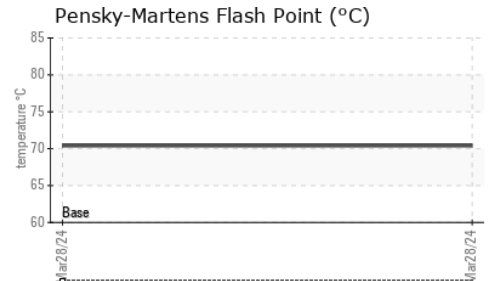
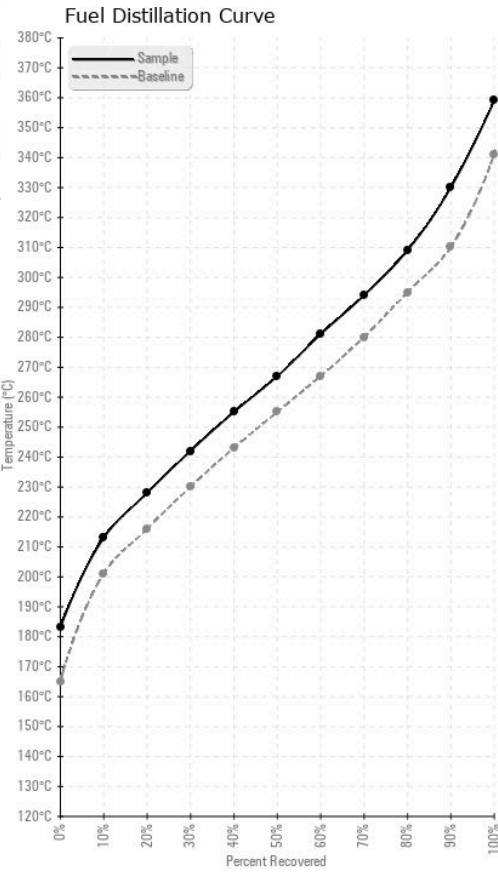
# FUEL REPORT



HEAVY METALS		method	limit/base	current	history1	history2
Aluminum	ppm	ASTM D5185m	<0.1	0	---	---
Nickel	ppm	ASTM D5185m	<0.1	0	---	---
Lead	ppm	ASTM D5185m	<0.1	0	---	---
Vanadium	ppm	ASTM D5185m	<0.1	0	---	---
Iron	ppm	ASTM D5185m	<0.1	0	---	---
Calcium	ppm	ASTM D5185m	<0.1	0	---	---
Magnesium	ppm	ASTM D5185m	<0.1	0	---	---
Phosphorus	ppm	ASTM D5185m	<0.1	0	---	---
Zinc	ppm	ASTM D5185m	<0.1	0	---	---

SAMPLE IMAGES		method	limit/base	current	history1	history2
Color				no image	no image	
Bottom				no image	no image	

## GRAPHS



**Laboratory** : WearCheck USA - 501 Madison Ave., Cary, NC 27513  
**Sample No.** : WCDF4581      **Received** : 04 Apr 2024  
**Lab Number** : 06139425      **Tested** : 15 Apr 2024  
**Unique Number** : 10964233      **Diagnosed** : 15 Apr 2024 - Doug Bogart  
**Test Package** : DF-2 ( Additional Tests: CldPt, Fuel, Screen )

**TANK WIZARDS**  
 1511 MASTERS RD NW  
 PALM BAY, FL  
 US 32907  
 Contact: WENDALL STRODERD  
 wendall@tankwizards.com

To discuss this sample report, contact Customer Service at 1-800-237-1369.

\* - Denotes test methods that are outside of the ISO 17025 scope of accreditation.

Statements of conformity to specifications are based on the simple acceptance decision rule (JCGM 106:2012)

T: (321)427-5149  
F: (321)574-4131