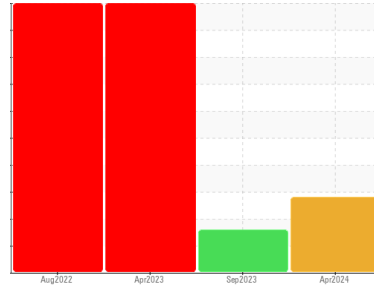




OIL ANALYSIS REPORT

Sample Rating Trend



VISUAL METAL



Area

Building 19

Machine Id

East Pugmill (West GBX)

Component

West Agitator Gearbox

Fluid

MOBIL GLYGOYLE HE ISO 460 (--- GAL)

DIAGNOSIS

Recommendation

We advise that you inspect for the source(s) of wear. We recommend an early resample to monitor this condition.

Wear

Bearing and/or bushing wear is indicated. High concentration of visible yellow metal present.

Contamination

There is no indication of any contamination in the oil.

Fluid Condition

The AN level is acceptable for this fluid.

SAMPLE INFORMATION

	method	limit/base	current	history1	history2
Sample Number	Client Info		WC0901932	WC0853795	WC0782534
Sample Date	Client Info		02 Apr 2024	04 Sep 2023	02 Apr 2023
Machine Age	hrs	Client Info	0	0	0
Oil Age	hrs	Client Info	0	0	0
Oil Changed	Client Info		Not Changed	Not Changed	N/A
Sample Status			ABNORMAL	ABNORMAL	SEVERE

CONTAMINATION

	method	limit/base	current	history1	history2
Water	WC Method	>0.1	NEG	NEG	NEG

WEAR METALS

	method	limit/base	current	history1	history2
Iron	ppm	ASTM D5185m >150	84	36	▲ 437
Chromium	ppm	ASTM D5185m >10	0	<1	3
Nickel	ppm	ASTM D5185m >10	4	2	▲ 144
Titanium	ppm	ASTM D5185m	0	<1	2
Silver	ppm	ASTM D5185m	0	<1	2
Aluminum	ppm	ASTM D5185m >25	2	6	2
Lead	ppm	ASTM D5185m >100	<1	0	6
Copper	ppm	ASTM D5185m >50	▲ 144	▲ 87	▲ 8657
Tin	ppm	ASTM D5185m >10	▲ 21	▲ 13	▲ 987
Vanadium	ppm	ASTM D5185m	0	0	0
Cadmium	ppm	ASTM D5185m	0	0	0

ADDITIVES

	method	limit/base	current	history1	history2
Boron	ppm	ASTM D5185m	0	6	68
Barium	ppm	ASTM D5185m	0	0	0
Molybdenum	ppm	ASTM D5185m	0	0	326
Manganese	ppm	ASTM D5185m	<1	<1	5
Magnesium	ppm	ASTM D5185m	2	5	21
Calcium	ppm	ASTM D5185m	0	11	24
Phosphorus	ppm	ASTM D5185m	426	580	1243
Zinc	ppm	ASTM D5185m	0	0	21
Sulfur	ppm	ASTM D5185m	723	973	25275

CONTAMINANTS

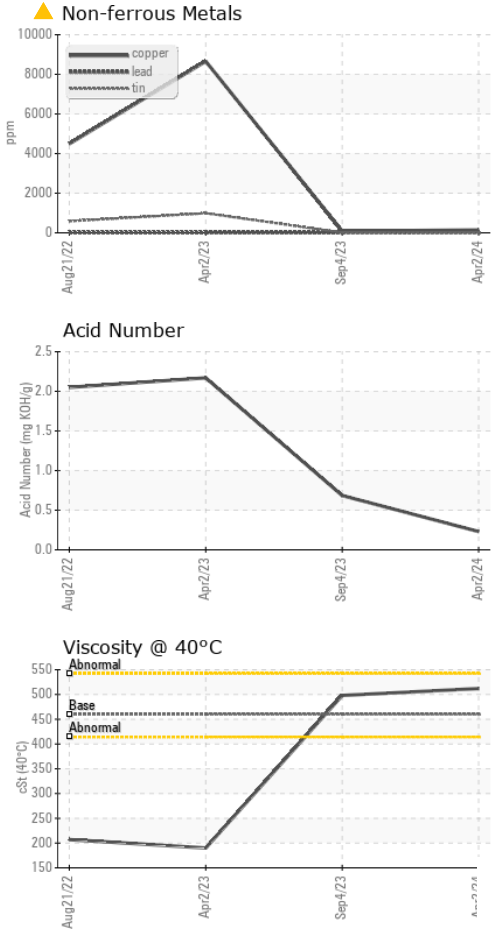
	method	limit/base	current	history1	history2
Silicon	ppm	ASTM D5185m >50	9	10	8
Sodium	ppm	ASTM D5185m	0	0	1
Potassium	ppm	ASTM D5185m >20	5	2	<1

FLUID DEGRADATION

	method	limit/base	current	history1	history2
Acid Number (AN)	mg KOH/g	ASTM D8045	0.23	0.685	2.17



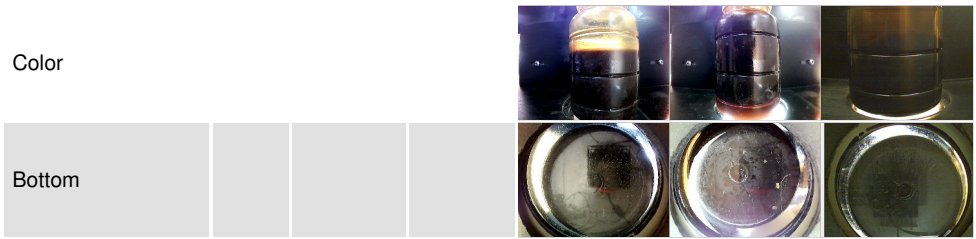
OIL ANALYSIS REPORT



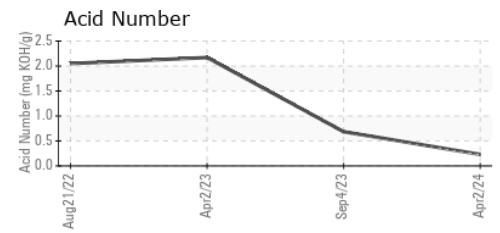
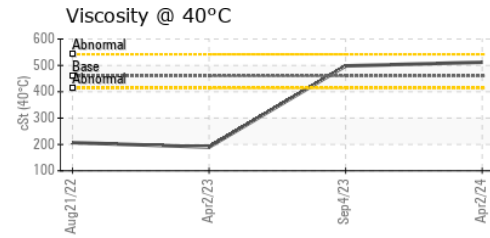
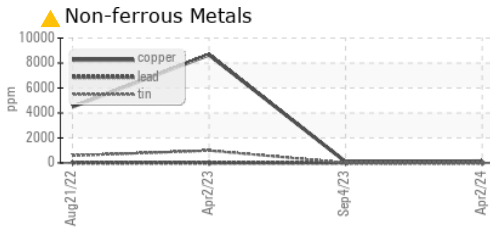
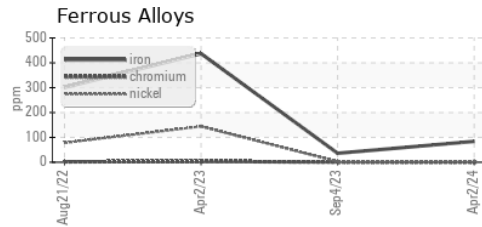
VISUAL	method	limit/base	current	history1	history2
White Metal	scalar	*Visual	NONE	NONE	NONE
Yellow Metal	scalar	*Visual	▲ HEAVY	NONE	NONE
Precipitate	scalar	*Visual	NONE	NONE	NONE
Silt	scalar	*Visual	NONE	NONE	NONE
Debris	scalar	*Visual	NONE	NONE	NONE
Sand/Dirt	scalar	*Visual	NONE	NONE	NONE
Appearance	scalar	*Visual	NORML	NORML	NORML
Odor	scalar	*Visual	NORML	NORML	NORML
Emulsified Water	scalar	*Visual	>0.1	NEG	NEG
Free Water	scalar	*Visual		NEG	NEG

FLUID PROPERTIES	method	limit/base	current	history1	history2
Visc @ 40°C	cSt	ASTM D445 460	512	498	190

SAMPLE IMAGES	method	limit/base	current	history1	history2
---------------	--------	------------	---------	----------	----------



GRAPHS



Laboratory : WearCheck USA - 501 Madison Ave., Cary, NC 27513
Sample No. : WC0901932 **Received** : 05 Apr 2024
Lab Number : **06140058** **Tested** : 08 Apr 2024
Unique Number : 10964866 **Diagnosed** : 08 Apr 2024 - Don Baldrige
Test Package : IND 2

3M - PITTSBORO
 4191 NC 87 S
 MONCURE, NC
 US 27559
 Contact: CHARLES JARRELL
 cjarrell@mmm.com

To discuss this sample report, contact Customer Service at 1-800-237-1369.
 * - Denotes test methods that are outside of the ISO 17025 scope of accreditation.
 Statements of conformity to specifications are based on the simple acceptance decision rule (JCGM 106:2012)