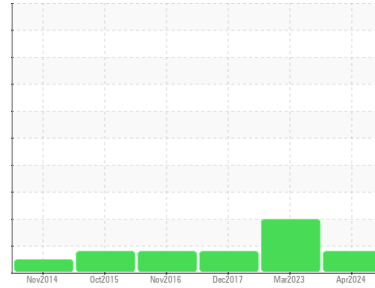




OIL ANALYSIS REPORT

Sample Rating Trend



WEAR



Machine Id

B741

Component

Hydraulic System

Fluid

AW HYDRAULIC OIL ISO 46 (--- QTS)

DIAGNOSIS

Recommendation

No corrective action is recommended at this time. Resample at the next service interval to monitor.

Wear

The copper level is abnormal. All other component wear rates are normal.

Contamination

There is no indication of any contamination in the component.

Fluid Condition

The condition of the oil is acceptable for the time in service.

SAMPLE INFORMATION

| | method | limit/base | current | history1 | history2 |
|---------------|-------------|-------------|--------------------|-------------|-------------|
| Sample Number | Client Info | | WC0848709 | WC0778566 | WCO1108472 |
| Sample Date | Client Info | | 06 Apr 2024 | 17 Mar 2023 | 28 Dec 2017 |
| Machine Age | hrs | Client Info | 0 | 0 | 0 |
| Oil Age | hrs | Client Info | 0 | 0 | 0 |
| Oil Changed | Client Info | | N/A | N/A | N/A |
| Sample Status | | | ABNORMAL | ABNORMAL | ABNORMAL |

CONTAMINATION

| | method | limit/base | current | history1 | history2 |
|-------|-----------|------------|------------|----------|----------|
| Water | WC Method | >0.05 | NEG | NEG | NEG |

WEAR METALS

| | method | limit/base | current | history1 | history2 | |
|----------|--------|-------------|---------|-------------|----------|------|
| Iron | ppm | ASTM D5185m | >20 | 7 | 10 | 4 |
| Chromium | ppm | ASTM D5185m | >20 | 8 | 9 | 7 |
| Nickel | ppm | ASTM D5185m | >20 | 0 | 0 | <1 |
| Titanium | ppm | ASTM D5185m | | 0 | 0 | 0 |
| Silver | ppm | ASTM D5185m | | 0 | 0 | 0 |
| Aluminum | ppm | ASTM D5185m | >20 | 0 | 0 | <1 |
| Lead | ppm | ASTM D5185m | >20 | 0 | <1 | <1 |
| Copper | ppm | ASTM D5185m | >20 | ▲ 22 | ▲ 23 | ▲ 32 |
| Tin | ppm | ASTM D5185m | >20 | 0 | <1 | 5 |
| Antimony | ppm | ASTM D5185m | | --- | --- | 0 |
| Vanadium | ppm | ASTM D5185m | | 0 | 0 | 0 |
| Cadmium | ppm | ASTM D5185m | | 0 | 0 | 0 |

ADDITIVES

| | method | limit/base | current | history1 | history2 | |
|------------|--------|-------------|---------|--------------|----------|------|
| Boron | ppm | ASTM D5185m | 5 | 0 | 0 | 1 |
| Barium | ppm | ASTM D5185m | 5 | 0 | 0 | 0 |
| Molybdenum | ppm | ASTM D5185m | 5 | 0 | <1 | <1 |
| Manganese | ppm | ASTM D5185m | | 0 | <1 | <1 |
| Magnesium | ppm | ASTM D5185m | 25 | <1 | 2 | 0 |
| Calcium | ppm | ASTM D5185m | 200 | 44 | 45 | 40 |
| Phosphorus | ppm | ASTM D5185m | 300 | 335 | 285 | 267 |
| Zinc | ppm | ASTM D5185m | 370 | 324 | 306 | 283 |
| Sulfur | ppm | ASTM D5185m | 2500 | 1170 | 1026 | 1074 |

CONTAMINANTS

| | method | limit/base | current | history1 | history2 | |
|-----------|--------|-------------|---------|--------------|----------|---|
| Silicon | ppm | ASTM D5185m | >15 | <1 | 2 | 1 |
| Sodium | ppm | ASTM D5185m | | <1 | <1 | 0 |
| Potassium | ppm | ASTM D5185m | >20 | 0 | <1 | 2 |

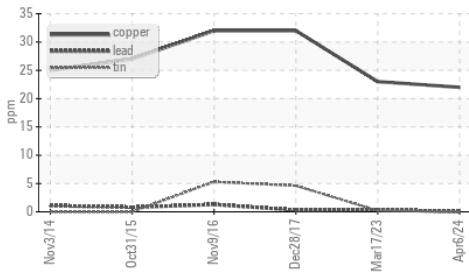
VISUAL

| | method | limit/base | current | history1 | history2 | |
|------------------|--------|------------|---------|--------------|----------|-------|
| White Metal | scalar | *Visual | NONE | NONE | ▲ MODER | NONE |
| Yellow Metal | scalar | *Visual | NONE | NONE | NONE | NONE |
| Precipitate | scalar | *Visual | NONE | NONE | NONE | NONE |
| Silt | scalar | *Visual | NONE | NONE | NONE | NONE |
| Debris | scalar | *Visual | NONE | NONE | NONE | NONE |
| Sand/Dirt | scalar | *Visual | NONE | NONE | NONE | NONE |
| Appearance | scalar | *Visual | NORML | NORML | NORML | NORML |
| Odor | scalar | *Visual | NORML | NORML | NORML | NORML |
| Emulsified Water | scalar | *Visual | >0.05 | NEG | NEG | NEG |
| Free Water | scalar | *Visual | | NEG | NEG | NEG |

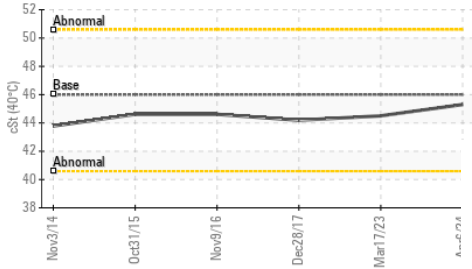


OIL ANALYSIS REPORT

▲ Non-ferrous Metals



Viscosity @ 40°C



FLUID PROPERTIES

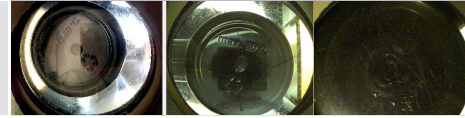
| method | limit/base | current | history1 | history2 | | |
|-------------|------------|-----------|----------|-------------|------|-------|
| Visc @ 40°C | cSt | ASTM D445 | 46 | 45.3 | 44.5 | 44.19 |

SAMPLE IMAGES

Color

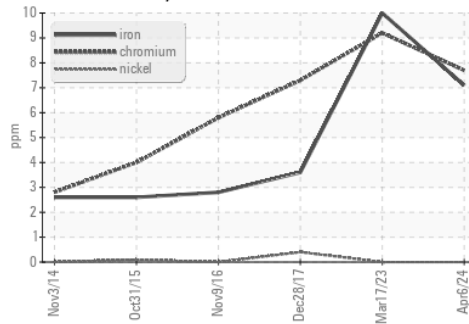


Bottom

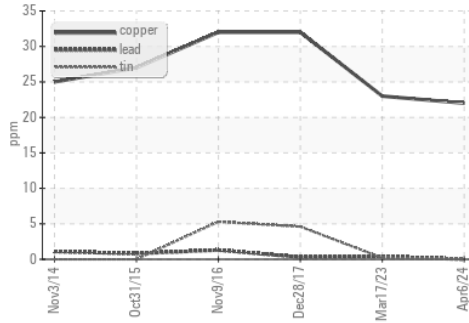


GRAPHS

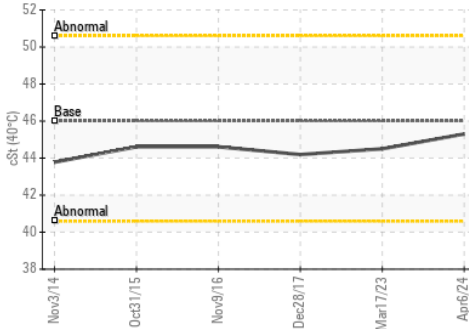
Ferrous Alloys



▲ Non-ferrous Metals



Viscosity @ 40°C



Certificate L2367

Laboratory : WearCheck USA - 501 Madison Ave., Cary, NC 27513
Sample No. : WC0848709
Lab Number : **06140350**
Unique Number : 10965158
Test Package : IND 1
Received : 05 Apr 2024
Tested : 08 Apr 2024
Diagnosed : 09 Apr 2024 - Don Baldrige

SUMIRIKO TENNESSEE INC
 150 HESTER LN
 TAZEWELL, TN
 US 37879
 Contact: JEREMY COLLINS
 jcollins@us.sumiriko.com
 T: (423)626-8805
 F: (423)626-2065

To discuss this sample report, contact Customer Service at 1-800-237-1369.

* - Denotes test methods that are outside of the ISO 17025 scope of accreditation.

Statements of conformity to specifications are based on the simple acceptance decision rule (JCGM 106:2012)