

Area

[X48793]

Machine Id

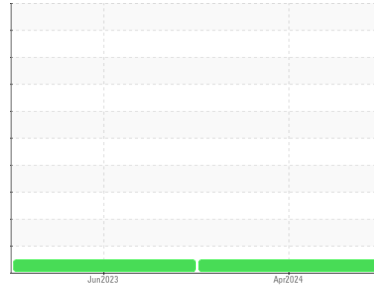
TADANO GTC-700 600-130

Component

Diesel Fuel

Fluid

No.2 DIESEL FUEL (ULTRALOW SULPHUR) (--- GAL)



DIAGNOSIS

Recommendation

No corrective action is recommended at this time.

Corrosion

All metal levels are normal indicating no corrosion in the system.

Contaminants

The water content is negligible. There is no indication of any contamination in the fuel.

Fuel Condition

The condition of the fuel is acceptable for the time in service.

SAMPLE INFORMATION		method	limit/base	current	history1	history2
Sample Number	Client Info			VCP442866	VCP407875	---
Sample Date	Client Info			01 Apr 2024	05 Jun 2023	---
Machine Age	hrs	Client Info		2179	1880	---
Sample Status				NORMAL	NORMAL	---

PHYSICAL PROPERTIES

method	limit/base	current	history1	history2		
Visc @ 40°C	cSt	ASTM D445	3.0	2.42	2.91	---

SULFUR CONTENT

method	limit/base	current	history1	history2		
Sulfur	ppm	ASTM D5185m	10	0	0	---

CONTAMINANTS

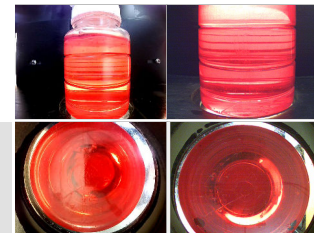
method	limit/base	current	history1	history2		
Silicon	ppm	ASTM D5185m	<1.0	0	0	---
Sodium	ppm	ASTM D5185m	<0.1	<1	<1	---
Potassium	ppm	ASTM D5185m	<0.1	0	0	---
Water	%	ASTM D6304	<0.05	0.002	0.002	---
ppm Water	ppm	ASTM D6304	<500	20	22.9	---

HEAVY METALS

method	limit/base	current	history1	history2		
Aluminum	ppm	ASTM D5185m	<0.1	0	0	---
Nickel	ppm	ASTM D5185m	<0.1	0	0	---
Lead	ppm	ASTM D5185m	<0.1	0	0	---
Vanadium	ppm	ASTM D5185m	<0.1	0	0	---
Iron	ppm	ASTM D5185m	<0.1	0	0	---
Calcium	ppm	ASTM D5185m	<0.1	0	0	---
Magnesium	ppm	ASTM D5185m	<0.1	<1	<1	---
Phosphorus	ppm	ASTM D5185m	<0.1	0	4	---
Zinc	ppm	ASTM D5185m	<0.1	0	0	---

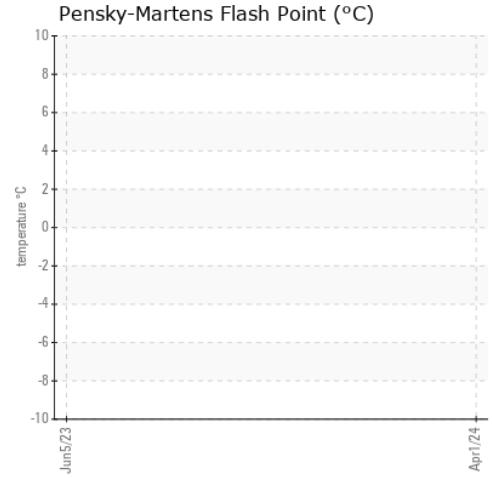
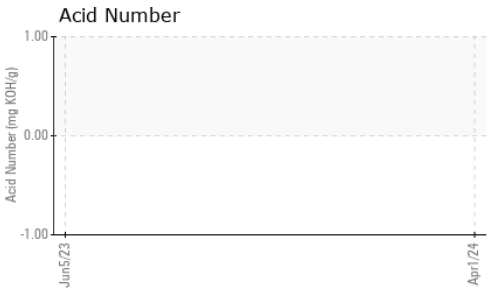
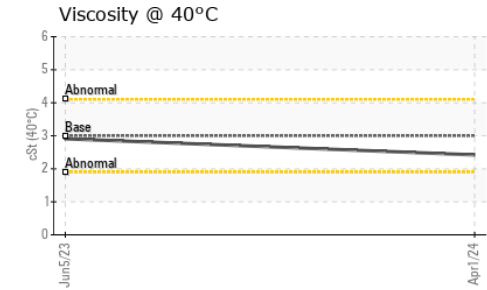
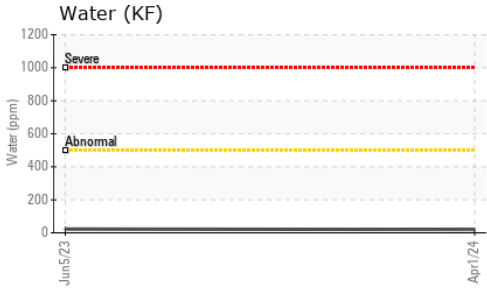
SAMPLE IMAGES

method	limit/base	current	history1	history2
Color				<i>no image</i>
Bottom				<i>no image</i>



FUEL REPORT

GRAPHS



Certificate L2367

To discuss this sample report, contact Customer Service at 1-800-237-1369.

* - Denotes test methods that are outside of the ISO 17025 scope of accreditation.

Statements of conformity to specifications are based on the simple acceptance decision rule (JCGM 106:2012)

Laboratory : WearCheck USA - 501 Madison Ave., Cary, NC 27513
Sample No. : VCP442866
Lab Number : 06140405
Unique Number : 10965213
Test Package : MOB 1 (Additional Tests: KF)

Received : 05 Apr 2024
Tested : 10 Apr 2024
Diagnosed : 10 Apr 2024 - Jonathan Hester

SCOTT EQUIPMENT COMPANY LLC - Lake Charles
 PO BOX 16955
 LAKE CHARLES, LA
 US 70616

Contact: SAMANTHA SOILEAU
 ssoileau@scottcompanies.com

T: (337)433-9811

F: (318)433-6623