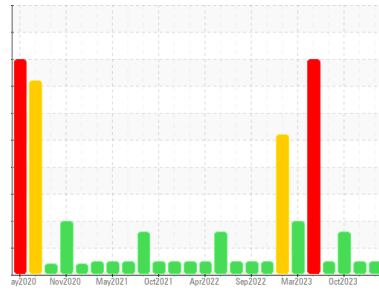




# OIL ANALYSIS REPORT

Sample Rating Trend



**NORMAL**



Machine Id  
**PRESS ROLL 1**  
 Component  
**Gearbox**  
 Fluid  
**GEAR OIL ISO 460 (90 GAL)**

## DIAGNOSIS

### Recommendation

Resample at the next service interval to monitor.

### Wear

All component wear rates are normal.

### Contamination

There is no indication of any contamination in the oil.

### Fluid Condition

The AN level is acceptable for this fluid. The condition of the oil is suitable for further service.

## SAMPLE INFORMATION

|               | method      | limit/base  | current            | history1    | history2    |
|---------------|-------------|-------------|--------------------|-------------|-------------|
| Sample Number | Client Info |             | <b>WC0873117</b>   | WC0819728   | WC0845566   |
| Sample Date   | Client Info |             | <b>04 Apr 2024</b> | 24 Jan 2024 | 16 Oct 2023 |
| Machine Age   | hrs         | Client Info | <b>0</b>           | 0           | 0           |
| Oil Age       | hrs         | Client Info | <b>0</b>           | 0           | 0           |
| Oil Changed   | Client Info |             | <b>N/A</b>         | N/A         | N/A         |
| Sample Status |             |             | <b>NORMAL</b>      | NORMAL      | ABNORMAL    |

## CONTAMINATION

|       | method    | limit/base | current    | history1 | history2 |
|-------|-----------|------------|------------|----------|----------|
| Water | WC Method | >0.2       | <b>NEG</b> | NEG      | NEG      |

## WEAR METALS

|          | method | limit/base       | current   | history1 | history2 |
|----------|--------|------------------|-----------|----------|----------|
| Iron     | ppm    | ASTM D5185m >200 | <b>8</b>  | 4        | 103      |
| Chromium | ppm    | ASTM D5185m >15  | <b>0</b>  | 0        | <1       |
| Nickel   | ppm    | ASTM D5185m >15  | <b>1</b>  | <1       | <1       |
| Titanium | ppm    | ASTM D5185m      | <b>0</b>  | 0        | 0        |
| Silver   | ppm    | ASTM D5185m      | <b>0</b>  | 0        | 0        |
| Aluminum | ppm    | ASTM D5185m >25  | <b>0</b>  | 0        | 1        |
| Lead     | ppm    | ASTM D5185m >100 | <b>5</b>  | 2        | 6        |
| Copper   | ppm    | ASTM D5185m >200 | <b>82</b> | 63       | ▲ 318    |
| Tin      | ppm    | ASTM D5185m >25  | <b>9</b>  | 6        | ▲ 38     |
| Vanadium | ppm    | ASTM D5185m      | <b>0</b>  | 0        | 0        |
| Cadmium  | ppm    | ASTM D5185m      | <b>0</b>  | 0        | 0        |

## ADDITIVES

|            | method | limit/base        | current      | history1 | history2 |
|------------|--------|-------------------|--------------|----------|----------|
| Boron      | ppm    | ASTM D5185m 50    | <b>6</b>     | 5        | 9        |
| Barium     | ppm    | ASTM D5185m 15    | <b>0</b>     | <1       | 0        |
| Molybdenum | ppm    | ASTM D5185m 15    | <b>&lt;1</b> | 0        | 1        |
| Manganese  | ppm    | ASTM D5185m       | <b>0</b>     | <1       | 1        |
| Magnesium  | ppm    | ASTM D5185m 50    | <b>0</b>     | 4        | 3        |
| Calcium    | ppm    | ASTM D5185m 50    | <b>27</b>    | 34       | 57       |
| Phosphorus | ppm    | ASTM D5185m 350   | <b>143</b>   | 153      | 202      |
| Zinc       | ppm    | ASTM D5185m 100   | <b>25</b>    | 34       | 53       |
| Sulfur     | ppm    | ASTM D5185m 12500 | <b>19472</b> | 15895    | 16735    |

## CONTAMINANTS

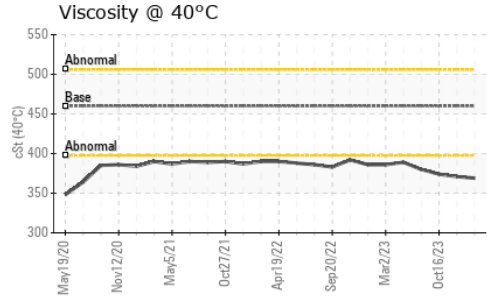
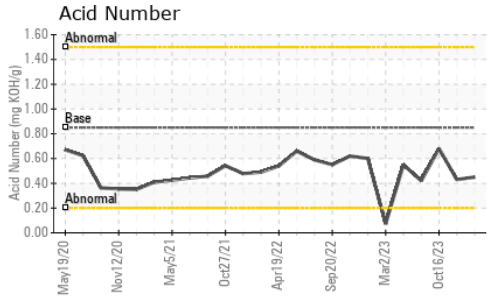
|           | method | limit/base      | current      | history1 | history2 |
|-----------|--------|-----------------|--------------|----------|----------|
| Silicon   | ppm    | ASTM D5185m >50 | <b>&lt;1</b> | <1       | 4        |
| Sodium    | ppm    | ASTM D5185m     | <b>&lt;1</b> | <1       | 4        |
| Potassium | ppm    | ASTM D5185m >20 | <b>0</b>     | <1       | 2        |

## FLUID DEGRADATION

|                  | method   | limit/base      | current     | history1 | history2 |
|------------------|----------|-----------------|-------------|----------|----------|
| Acid Number (AN) | mg KOH/g | ASTM D8045 0.85 | <b>0.45</b> | 0.43     | 0.68     |



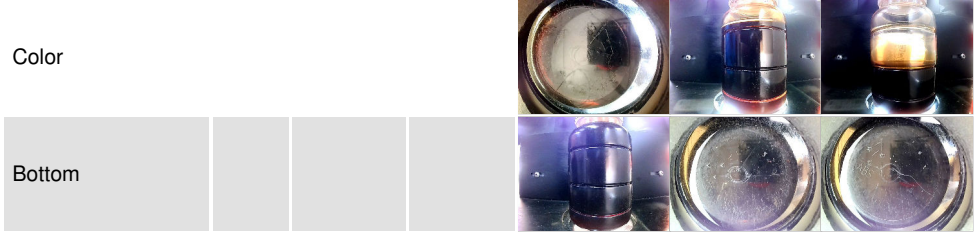
# OIL ANALYSIS REPORT



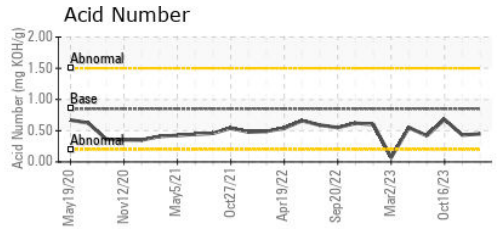
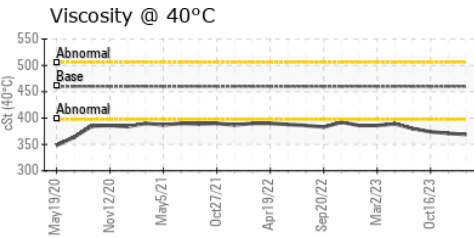
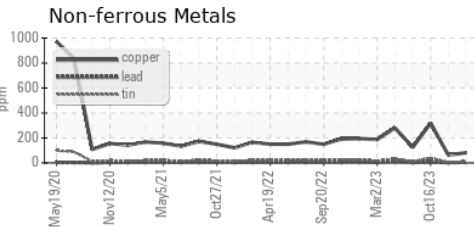
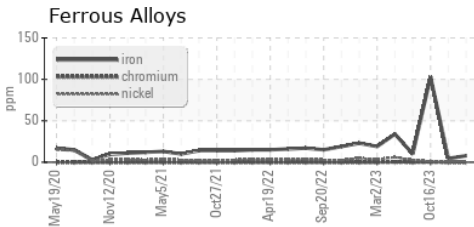
| VISUAL           | method | limit/base | current | history1 | history2 |
|------------------|--------|------------|---------|----------|----------|
| White Metal      | scalar | *Visual    | NONE    | NONE     | NONE     |
| Yellow Metal     | scalar | *Visual    | NONE    | NONE     | NONE     |
| Precipitate      | scalar | *Visual    | NONE    | NONE     | NONE     |
| Silt             | scalar | *Visual    | NONE    | NONE     | NONE     |
| Debris           | scalar | *Visual    | NONE    | NONE     | NONE     |
| Sand/Dirt        | scalar | *Visual    | NONE    | NONE     | NONE     |
| Appearance       | scalar | *Visual    | NORML   | NORML    | NORML    |
| Odor             | scalar | *Visual    | NORML   | NORML    | NORML    |
| Emulsified Water | scalar | *Visual    | >0.2    | NEG      | NEG      |
| Free Water       | scalar | *Visual    |         | NEG      | NEG      |

| FLUID PROPERTIES | method | limit/base    | current    | history1 | history2 |
|------------------|--------|---------------|------------|----------|----------|
| Visc @ 40°C      | cSt    | ASTM D445 460 | <b>369</b> | 371      | 374      |

| SAMPLE IMAGES | method | limit/base | current | history1 | history2 |
|---------------|--------|------------|---------|----------|----------|
|---------------|--------|------------|---------|----------|----------|



## GRAPHS



**Laboratory** : WearCheck USA - 501 Madison Ave., Cary, NC 27513  
**Sample No.** : WC0873117  
**Lab Number** : **06141505**  
**Unique Number** : 10966313  
**Test Package** : IND 2  
**Received** : 08 Apr 2024  
**Tested** : 09 Apr 2024  
**Diagnosed** : 10 Apr 2024 - Angela Borella

**BLUE RIDGE FIBERBOARD**  
 250 KNIGHT CELOTEX DR  
 DANVILLE, VA  
 US 24541  
 Contact: Jerald Caldwell  
 JCaldwell@blueridgefiberboard.com

To discuss this sample report, contact Customer Service at 1-800-237-1369.

\* - Denotes test methods that are outside of the ISO 17025 scope of accreditation.

Statements of conformity to specifications are based on the simple acceptance decision rule (JCGM 106:2012)