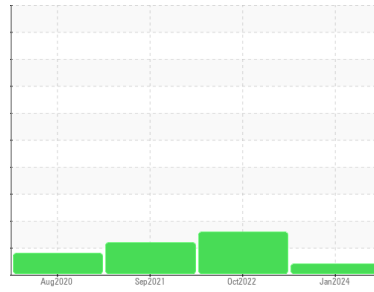




OIL ANALYSIS REPORT

Sample Rating Trend



VIS DEBRIS



Machine Id
6994210 (S/N 1039)
 Component
Compressor
 Fluid
KAESER SIGMA (OEM) M-460 (--- GAL)

DIAGNOSIS

▲ Recommendation

No corrective action is recommended at this time. The filter change at the time of sampling has been noted. Resample at the next service interval to monitor. We were unable to perform a particle count due to a high concentration of particles present in this sample.

Wear

All component wear rates are normal.

▲ Contamination

Moderate concentration of visible dirt/debris present in the oil.

Fluid Condition

The AN level is acceptable for this fluid. The condition of the oil is suitable for further service.

SAMPLE INFORMATION		method	limit/base	current	history1	history2
Sample Number	Client Info			KCPA011042	KCP46676	KCP37802
Sample Date	Client Info			19 Jan 2024	07 Oct 2022	03 Sep 2021
Machine Age	hrs	Client Info		14936	9511	5578
Oil Age	hrs	Client Info		0	3067	2400
Oil Changed	Client Info			N/A	Changed	Changed
Sample Status				ABNORMAL	ABNORMAL	ABNORMAL

WEAR METALS		method	limit/base	current	history1	history2
Iron	ppm	ASTM D5185m	>50	<1	0	<1
Chromium	ppm	ASTM D5185m	>10	<1	0	0
Nickel	ppm	ASTM D5185m	>3	0	0	<1
Titanium	ppm	ASTM D5185m	>3	<1	<1	0
Silver	ppm	ASTM D5185m	>2	<1	0	0
Aluminum	ppm	ASTM D5185m	>10	2	1	<1
Lead	ppm	ASTM D5185m	>10	0	2	1
Copper	ppm	ASTM D5185m	>50	2	1	1
Tin	ppm	ASTM D5185m	>10	<1	<1	<1
Antimony	ppm	ASTM D5185m		---	---	0
Vanadium	ppm	ASTM D5185m		<1	<1	0
Cadmium	ppm	ASTM D5185m		0	0	0

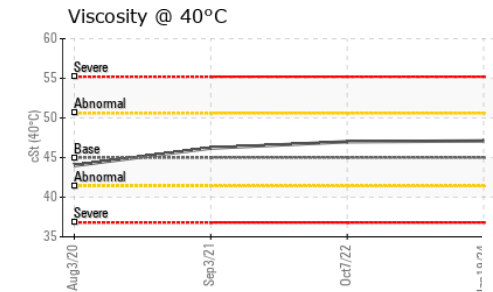
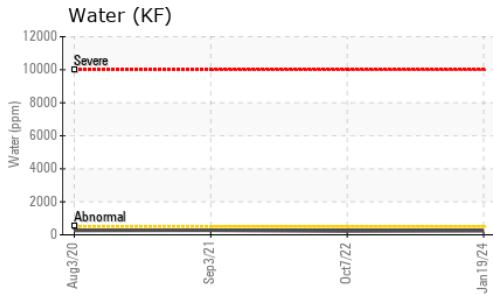
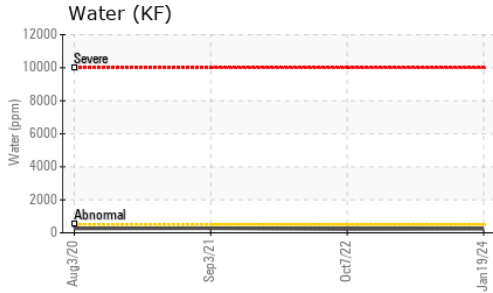
ADDITIVES		method	limit/base	current	history1	history2
Boron	ppm	ASTM D5185m	0	0	0	0
Barium	ppm	ASTM D5185m	90	2	0	0
Molybdenum	ppm	ASTM D5185m	0	0	0	0
Manganese	ppm	ASTM D5185m		0	<1	<1
Magnesium	ppm	ASTM D5185m	100	66	74	78
Calcium	ppm	ASTM D5185m	0	9	0	3
Phosphorus	ppm	ASTM D5185m	0	1	25	3
Zinc	ppm	ASTM D5185m	0	6	2	2
Sulfur	ppm	ASTM D5185m	23500	23587	23656	17584

CONTAMINANTS		method	limit/base	current	history1	history2
Silicon	ppm	ASTM D5185m	>25	0	<1	<1
Sodium	ppm	ASTM D5185m		23	21	18
Potassium	ppm	ASTM D5185m	>20	9	15	9
Water	%	ASTM D6304	>0.05	0.023	0.021	0.027
ppm Water	ppm	ASTM D6304	>500	237	216.5	271.3

FLUID CLEANLINESS		method	limit/base	current	history1	history2
Particles >4µm		ASTM D7647		---	26906	24075
Particles >6µm		ASTM D7647	>1300	---	▲ 7241	▲ 5737
Particles >14µm		ASTM D7647	>80	---	▲ 223	▲ 182
Particles >21µm		ASTM D7647	>20	---	▲ 32	▲ 26
Particles >38µm		ASTM D7647	>4	---	0	1
Particles >71µm		ASTM D7647	>3	---	0	0
Oil Cleanliness		ISO 4406 (c)	>--/17/13	---	▲ 22/20/15	▲ 20/15

FLUID DEGRADATION		method	limit/base	current	history1	history2
Acid Number (AN)	mg KOH/g	ASTM D8045	1.0	0.36	0.35	0.374

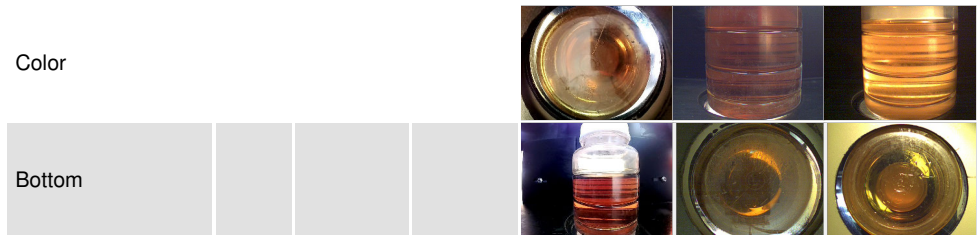
OIL ANALYSIS REPORT



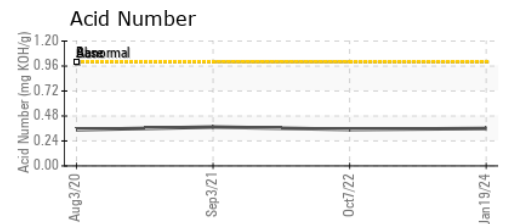
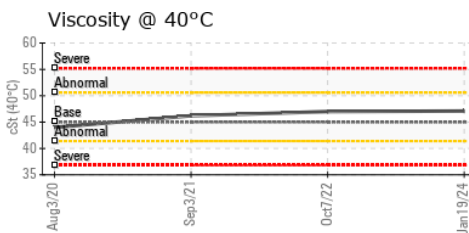
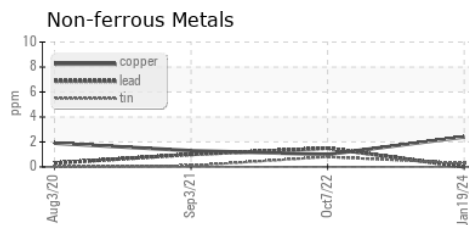
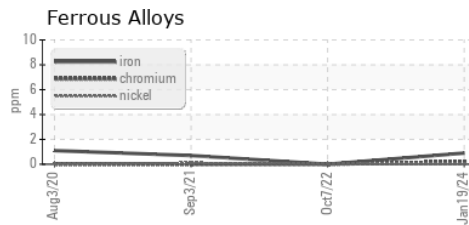
VISUAL	method	limit/base	current	history1	history2
White Metal	scalar	*Visual	NONE	NONE	VLITE
Yellow Metal	scalar	*Visual	NONE	NONE	NONE
Precipitate	scalar	*Visual	NONE	NONE	NONE
Silt	scalar	*Visual	NONE	NONE	NONE
Debris	scalar	*Visual	▲ MODER	NONE	NONE
Sand/Dirt	scalar	*Visual	NONE	NONE	NONE
Appearance	scalar	*Visual	NORML	NORML	NORML
Odor	scalar	*Visual	NORML	NORML	NORML
Emulsified Water	scalar	*Visual	>0.05	NEG	NEG
Free Water	scalar	*Visual		NEG	NEG

FLUID PROPERTIES	method	limit/base	current	history1	history2
Visc @ 40°C	cSt	ASTM D445	45	47.1	47.0

SAMPLE IMAGES	method	limit/base	current	history1	history2
---------------	--------	------------	---------	----------	----------



GRAPHS



Certificate L2367

Laboratory : WearCheck USA - 501 Madison Ave., Cary, NC 27513
Sample No. : KCPA011042 **Received** : 08 Apr 2024
Lab Number : 06142226 **Tested** : 11 Apr 2024
Unique Number : 10967034 **Diagnosed** : 11 Apr 2024 - Don Baldrige
Test Package : IND 2 (Additional Tests: KF, PrtCount)

To discuss this sample report, contact Customer Service at 1-800-237-1369.

* - Denotes test methods that are outside of the ISO 17025 scope of accreditation.

Statements of conformity to specifications are based on the simple acceptance decision rule (JCGM 106:2012)

ROYAL WHITE CEMENT
 1633 BLAIRS BRIDGE RD
 LITHIA SPRINGS, GA
 US 30122

Contact: CHRISTOPHER
 christopher@royalwhitecement.com

T:
 F: