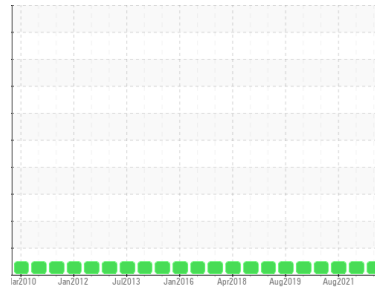




# OIL ANALYSIS REPORT

Sample Rating Trend



**NORMAL**



Area  
**ACS-46-5 [417448]**  
 Machine Id  
**ATLAS COPCO AII257080H - VERIZON FREEHOLD**  
 Component  
**Compressor**

## DIAGNOSIS

### Recommendation

Resample at the next service interval to monitor.

### Wear

All component wear rates are normal.

### Contamination

There is no indication of any contamination in the oil.

### Fluid Condition

The AN level is acceptable for this fluid. The condition of the oil is suitable for further service.

## SAMPLE INFORMATION

|               | method      | limit/base  | current            | history1    | history2    |
|---------------|-------------|-------------|--------------------|-------------|-------------|
| Sample Number | Client Info |             | <b>UCH06142345</b> | UCH05468914 | UCH05328614 |
| Sample Date   | Client Info |             | <b>07 Mar 2024</b> | 31 Jan 2022 | 16 Aug 2021 |
| Machine Age   | hrs         | Client Info | <b>195615</b>      | 179758      | 175860      |
| Oil Age       | hrs         | Client Info | <b>8824</b>        | 2217        | 4600        |
| Oil Changed   | Client Info |             | <b>Changed</b>     | Changed     | N/A         |
| Sample Status |             |             | <b>NORMAL</b>      | NORMAL      | NORMAL      |

## CONTAMINATION

|       | method    | limit/base | current    | history1 | history2 |
|-------|-----------|------------|------------|----------|----------|
| Water | WC Method | >0.1       | <b>NEG</b> | NEG      | NEG      |

## WEAR METALS

|          | method | limit/base      | current      | history1 | history2 |
|----------|--------|-----------------|--------------|----------|----------|
| Iron     | ppm    | ASTM D5185m >50 | <b>0</b>     | <1       | <1       |
| Chromium | ppm    | ASTM D5185m >10 | <b>&lt;1</b> | 0        | 0        |
| Nickel   | ppm    | ASTM D5185m     | <b>0</b>     | 0        | 0        |
| Titanium | ppm    | ASTM D5185m     | <b>&lt;1</b> | 0        | 0        |
| Silver   | ppm    | ASTM D5185m     | <b>&lt;1</b> | 0        | <1       |
| Aluminum | ppm    | ASTM D5185m >25 | <b>2</b>     | <1       | 0        |
| Lead     | ppm    | ASTM D5185m >25 | <b>0</b>     | <1       | <1       |
| Copper   | ppm    | ASTM D5185m >50 | <b>&lt;1</b> | 0        | <1       |
| Tin      | ppm    | ASTM D5185m >15 | <b>&lt;1</b> | 0        | 0        |
| Antimony | ppm    | ASTM D5185m     | <b>---</b>   | 0        | 0        |
| Vanadium | ppm    | ASTM D5185m     | <b>&lt;1</b> | 0        | 0        |
| Cadmium  | ppm    | ASTM D5185m     | <b>0</b>     | 0        | 0        |

## ADDITIVES

|            | method | limit/base       | current      | history1 | history2 |
|------------|--------|------------------|--------------|----------|----------|
| Boron      | ppm    | ASTM D5185m 1.5  | <b>0</b>     | <1       | <1       |
| Barium     | ppm    | ASTM D5185m 0    | <b>&lt;1</b> | 4        | 0        |
| Molybdenum | ppm    | ASTM D5185m 0    | <b>0</b>     | 0        | 0        |
| Manganese  | ppm    | ASTM D5185m 0.3  | <b>0</b>     | 0        | 0        |
| Magnesium  | ppm    | ASTM D5185m 0    | <b>&lt;1</b> | 0        | 0        |
| Calcium    | ppm    | ASTM D5185m 0    | <b>3</b>     | 0        | 0        |
| Phosphorus | ppm    | ASTM D5185m 406  | <b>194</b>   | 177      | 171      |
| Zinc       | ppm    | ASTM D5185m 0    | <b>0</b>     | 0        | 0        |
| Sulfur     | ppm    | ASTM D5185m 1283 | <b>1689</b>  | 235      | 222      |

## CONTAMINANTS

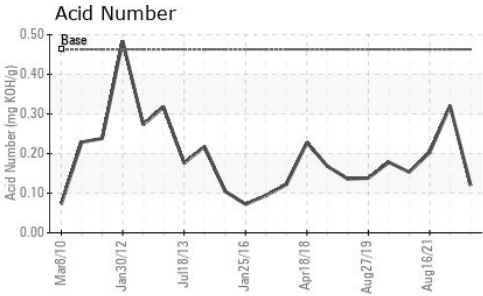
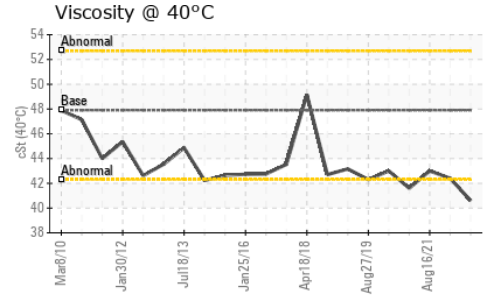
|           | method | limit/base      | current  | history1 | history2 |
|-----------|--------|-----------------|----------|----------|----------|
| Silicon   | ppm    | ASTM D5185m >25 | <b>0</b> | 1        | 1        |
| Sodium    | ppm    | ASTM D5185m     | <b>0</b> | 0        | <1       |
| Potassium | ppm    | ASTM D5185m >20 | <b>1</b> | <1       | 0        |

## FLUID DEGRADATION

|                  | method   | limit/base       | current     | history1 | history2 |
|------------------|----------|------------------|-------------|----------|----------|
| Acid Number (AN) | mg KOH/g | ASTM D8045 0.463 | <b>0.12</b> | 0.32     | 0.203    |



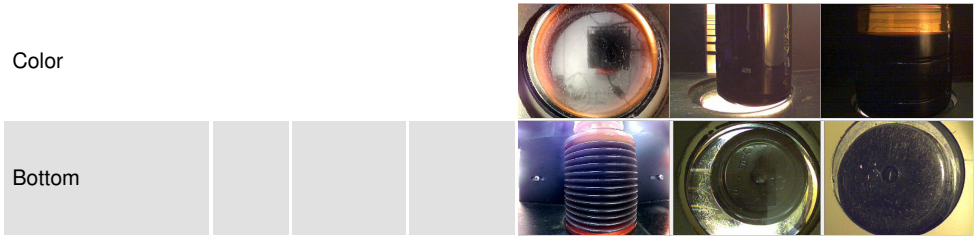
# OIL ANALYSIS REPORT



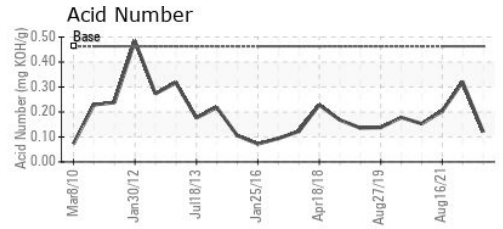
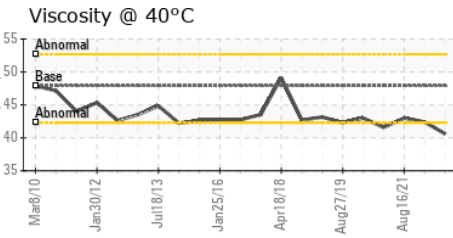
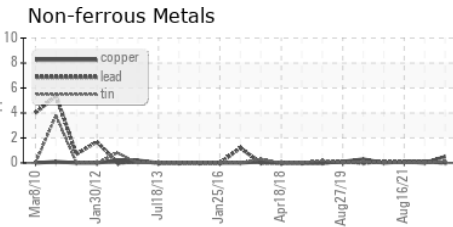
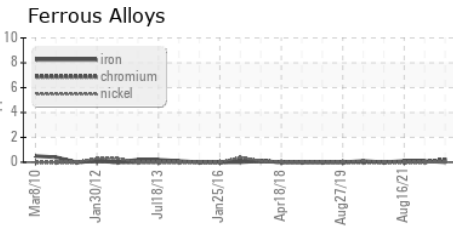
| VISUAL           | method | limit/base | current | history1 | history2 |
|------------------|--------|------------|---------|----------|----------|
| White Metal      | scalar | *Visual    | NONE    | NONE     | NONE     |
| Yellow Metal     | scalar | *Visual    | NONE    | NONE     | NONE     |
| Precipitate      | scalar | *Visual    | NONE    | NONE     | NONE     |
| Silt             | scalar | *Visual    | NONE    | NONE     | NONE     |
| Debris           | scalar | *Visual    | NONE    | NONE     | NONE     |
| Sand/Dirt        | scalar | *Visual    | NONE    | NONE     | NONE     |
| Appearance       | scalar | *Visual    | NORML   | NORML    | NORML    |
| Odor             | scalar | *Visual    | NORML   | NORML    | NORML    |
| Emulsified Water | scalar | *Visual    | >0.1    | NEG      | NEG      |
| Free Water       | scalar | *Visual    |         | NEG      | NEG      |

| FLUID PROPERTIES | method | limit/base | current | history1    | history2 |      |
|------------------|--------|------------|---------|-------------|----------|------|
| Visc @ 40°C      | cSt    | ASTM D445  | 47.9    | <b>40.6</b> | 42.4     | 43.0 |

| SAMPLE IMAGES | method | limit/base | current | history1 | history2 |
|---------------|--------|------------|---------|----------|----------|
|---------------|--------|------------|---------|----------|----------|



## GRAPHS



**Laboratory** : WearCheck USA - 501 Madison Ave., Cary, NC 27513  
**Sample No.** : UCH06142345      **Received** : 08 Apr 2024  
**Lab Number** : **06142345**      **Tested** : 09 Apr 2024  
**Unique Number** : 10967153      **Diagnosed** : 11 Apr 2024 - Don Baldrige  
**Test Package** : IND 2

**AIRMATIC COMPRESSOR SYSTEMS**  
 700 WASHINGTON AVE  
 CARLSTADT, NJ  
 US 07072  
 Contact: ELVIN DIAZ  
 ediaz@airmaticcompressor.com; canastasio@wearcheckusa.com  
 T: (800)864-7621  
 F: (201)342-6241

To discuss this sample report, contact Customer Service at 1-800-237-1369.

\* - Denotes test methods that are outside of the ISO 17025 scope of accreditation.

Statements of conformity to specifications are based on the simple acceptance decision rule (JCGM 106:2012)