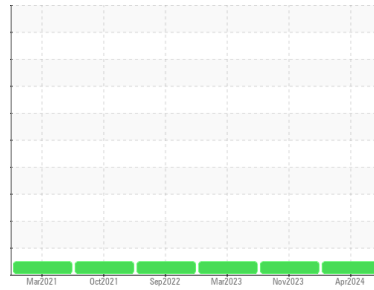




# COOLANT REPORT

### Sample Rating Trend



**NORMAL**



Area  
**COLORADO/443/EG - TRUCK-OFF-HWY-HEAVY HAUL**  
 Machine Id  
**69.101L [COLORADO^443^EG - TRUCK-OFF-HWY-HEAVY HAUL]**  
 Component  
**Coolant**  
 Fluid  
**EXTENDED LIFE COOLANT (21 GAL)**

### DIAGNOSIS

#### Recommendation

No corrective action is recommended at this time. The fluid is suitable for further service.

#### Corrosion

All metal levels are normal indicating no corrosion in the cooling system.

#### Contaminants

There is no indication of any contamination in the coolant.

#### Coolant Condition

Carboxylate test failed. Glycol and nitrite levels are acceptable. The pH level of this fluid is within the acceptable limits.

SAMPLE INFORMATION		method	limit/base	current	history1	history2
Sample Number	Client Info			<b>WC0883935</b>	WC0859619	WC0766161
Sample Date	Client Info			<b>03 Apr 2024</b>	27 Nov 2023	15 Mar 2023
Machine Age	hrs	Client Info		<b>7707</b>	7570	7192
Oil Age	hrs	Client Info		<b>7707</b>	7570	7192
Oil Changed	Client Info			<b>Not Changed</b>	Not Changed	Not Changed
Sample Status				<b>NORMAL</b>	NORMAL	NORMAL

PHYSICAL TEST RESULTS		method	limit/base	current	history1	history2
Glycol Type	FT-IR			---	---	---
Specific Gravity	*ASTM D1298			<b>1.069</b>	1.069	1.069
pH	Scale 0-14	ASTM D1287		<b>7.78</b>	7.71	7.81
Nitrites	ppm	AP-053:2009		<b>636</b>	600	560
Reserve Alkalinity	Scale 0-20	*ASTM D1121		---	---	---
Percentage Glycol	%	ASTM D3321		<b>51.6</b>	51.8	51.4
Freezing Point	°F	ASTM D3321		<b>-38</b>	-38	-38
Total Dissolved Solids				<b>332.5</b>	408.5	387.5
Carboxylate				<b>fail</b>	fail	pass

CORROSION INHIBITORS		method	limit/base	current	history1	history2
Silicon	ppm	ASTM D6130		<b>20</b>	19	55
Phosphorus	ppm	ASTM D6130		<b>0</b>	12	0
Boron	ppm	ASTM D6130		<b>0</b>	<1	0
Molybdenum	ppm	ASTM D6130		<b>679</b>	679	1200

CORROSION		method	limit/base	current	history1	history2
Iron	ppm	ASTM D6130	>15	<b>0</b>	0	0
Aluminum	ppm	ASTM D6130	>10	<b>1</b>	<1	<1
Copper	ppm	ASTM D6130	>10	<b>&lt;1</b>	<1	<1
Lead	ppm	ASTM D6130	>10	<b>&lt;1</b>	<1	0
Tin	ppm	ASTM D6130	>10	<b>&lt;1</b>	1	<1
Zinc	ppm	ASTM D6130		<b>0</b>	<1	<1

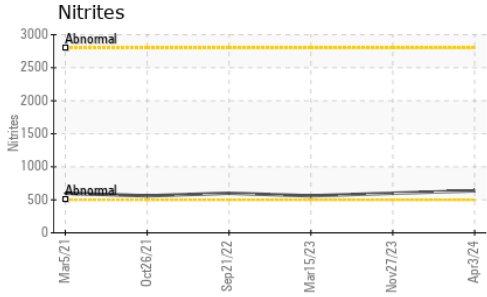
CONTAMINANTS		method	limit/base	current	history1	history2
Chlorine	ppm	ASTM D6130		<b>14</b>	12	13

CARRIER SALTS		method	limit/base	current	history1	history2
Sodium	ppm	ASTM D6130		<b>4176</b>	3791	6344
Potassium	ppm	ASTM D6130		<b>15</b>	53	15

SCALE POTENTIAL		method	limit/base	current	history1	history2
Calcium	ppm	ASTM D6130		<b>&lt;1</b>	3	2
Magnesium	ppm	ASTM D6130		<b>1</b>	2	2

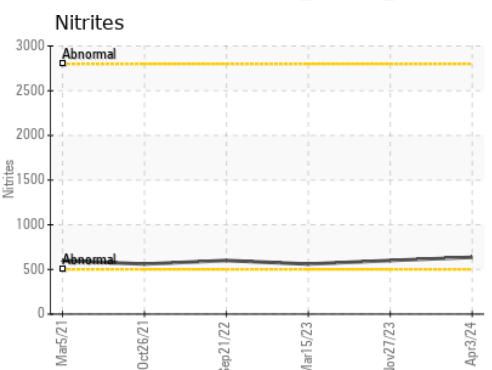
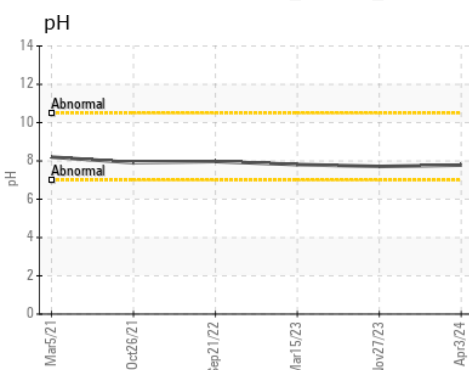
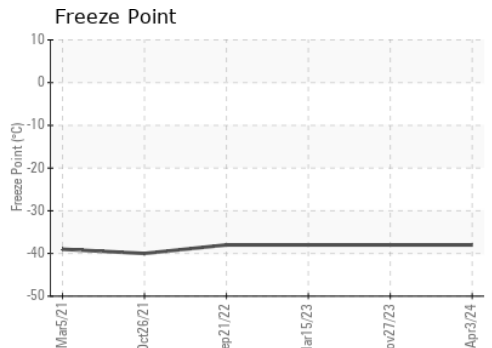
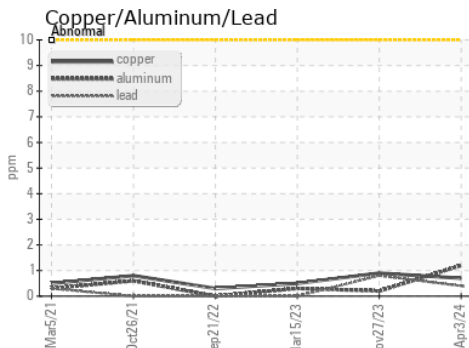
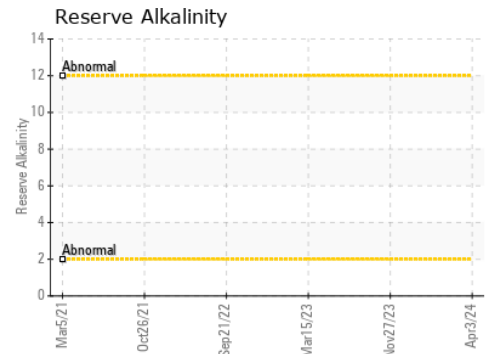
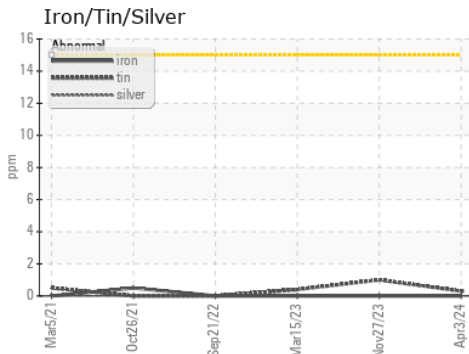


# COOLANT REPORT



VISUAL	method	limit/base	current	history1	history2
Coolant Color	*Visual		Red	Red	Red
Coolant Appearance	*Visual	Clear	normal	normal	normal
Color					
Bottom					

## GRAPHS



Certificate L2367

**Laboratory** : WearCheck USA - 501 Madison Ave., Cary, NC 27513  
**Sample No.** : WC0883935      **Received** : 08 Apr 2024  
**Lab Number** : 06142673      **Tested** : 11 Apr 2024  
**Unique Number** : 10967481      **Diagnosed** : 11 Apr 2024 - Jonathan Hester  
**Test Package** : COOL- ( Additional Tests: BoilingPoint, COOL, GlycolType, ICP )

**SHERWOOD CONSTRUCTION CO INC**  
 3219 WEST MAY ST  
 WICHITA, KS  
 US 67213  
 Contact: DOUG KING  
 doug.king@sherwood.net  
 T: (316)617-3161  
 F: x:

To discuss this sample report, contact Customer Service at 1-800-237-1369.

\* - Denotes test methods that are outside of the ISO 17025 scope of accreditation.

Statements of conformity to specifications are based on the simple acceptance decision rule (JCGM 106:2012)