

WATER



Machine Id
AUTOCANE 1B
 Component
Gearbox
 Fluid
CHEVRON MEROPA 220 (10 GAL)

DIAGNOSIS

Recommendation

We advise that you follow the water drain-off procedure for this component, and use off-line filtration to improve the cleanliness of the system fluid. We recommend an early resample to monitor this condition. We were unable to perform a particle count due to a high concentration of particles present in this sample. Due to an abnormal test result it is recommended to contact Stauff Corp at (201)-444-7800 for help resolving the issue.

Wear

All component wear rates are normal.

Contamination

Appearance is hazy. There is a light concentration of water present in the oil. Moderate concentration of visible dirt/debris present in the oil.

Fluid Condition

The AN level is acceptable for this fluid.

SAMPLE INFORMATION		method	limit/base	current	history1	history2
Sample Number	Client Info			ST44620	ST44636	ST44307
Sample Date	Client Info			02 Apr 2024	13 Apr 2023	20 Apr 2022
Machine Age	mths	Client Info		0	0	0
Oil Age	mths	Client Info		0	0	0
Oil Changed	Client Info			N/A	N/A	N/A
Sample Status				ABNORMAL	ABNORMAL	ABNORMAL

WEAR METALS		method	limit/base	current	history1	history2
Iron	ppm	ASTM D5185m	>200	77	56	65
Chromium	ppm	ASTM D5185m	>15	<1	<1	<1
Nickel	ppm	ASTM D5185m	>15	0	0	0
Titanium	ppm	ASTM D5185m		<1	0	<1
Silver	ppm	ASTM D5185m		0	0	<1
Aluminum	ppm	ASTM D5185m	>25	0	<1	1
Lead	ppm	ASTM D5185m	>100	0	0	0
Copper	ppm	ASTM D5185m	>200	2	<1	1
Tin	ppm	ASTM D5185m	>25	<1	0	0
Antimony	ppm	ASTM D5185m	>5	---	---	---
Vanadium	ppm	ASTM D5185m		<1	0	0
Cadmium	ppm	ASTM D5185m		0	0	0

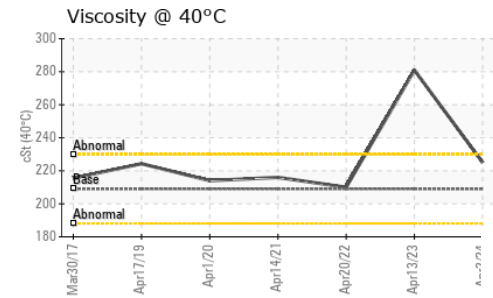
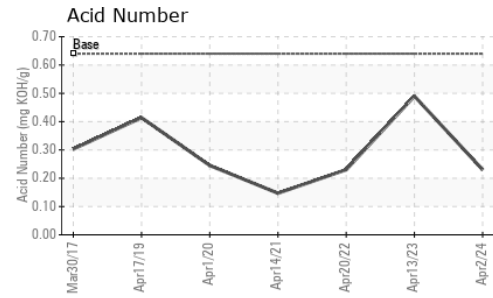
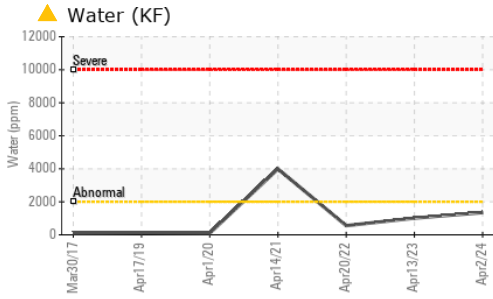
ADDITIVES		method	limit/base	current	history1	history2
Boron	ppm	ASTM D5185m	40	0	0	1
Barium	ppm	ASTM D5185m		0	0	0
Molybdenum	ppm	ASTM D5185m		0	0	<1
Manganese	ppm	ASTM D5185m		1	<1	<1
Magnesium	ppm	ASTM D5185m		1	4	7
Calcium	ppm	ASTM D5185m		10	9	6
Phosphorus	ppm	ASTM D5185m	270	140	176	137
Zinc	ppm	ASTM D5185m		1	8	4
Sulfur	ppm	ASTM D5185m	8600	10419	6822	4589

CONTAMINANTS		method	limit/base	current	history1	history2
Silicon	ppm	ASTM D5185m	>50	14	6	16
Sodium	ppm	ASTM D5185m		2	<1	0
Potassium	ppm	ASTM D5185m	>20	0	0	2
Water	%	ASTM D6304	>0.2	▲ 0.135	0.101	0.055
ppm Water	ppm	ASTM D6304	>2000	▲ 1350	1010	554.8

FLUID CLEANLINESS		method	limit/base	current	history1	history2
Particles >4µm		ASTM D7647	>1300	---	▲ 187023	▲ 183195
Particles >6µm		ASTM D7647	>320	---	▲ 61845	▲ 51254
Particles >14µm		ASTM D7647	>80	---	▲ 981	▲ 639
Particles >21µm		ASTM D7647	>20	---	▲ 101	▲ 71
Particles >38µm		ASTM D7647	>4	---	▲ 6	2
Particles >71µm		ASTM D7647	>3	---	0	1
Oil Cleanliness		ISO 4406 (c)	>17/15/13	---	▲ 25/23/17	▲ 25/23/16

FLUID DEGRADATION		method	limit/base	current	history1	history2
Acid Number (AN)	mg KOH/g	ASTM D8045	0.64	0.23	0.49	0.23

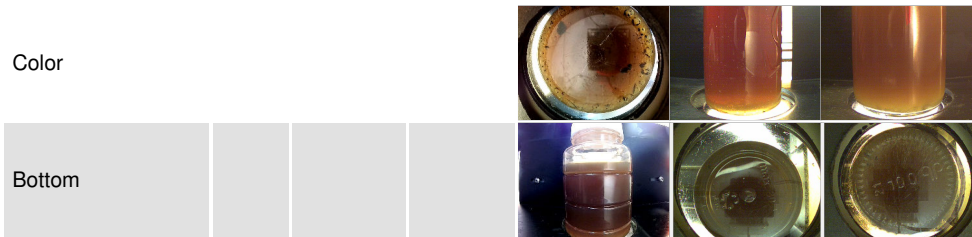
OIL ANALYSIS REPORT



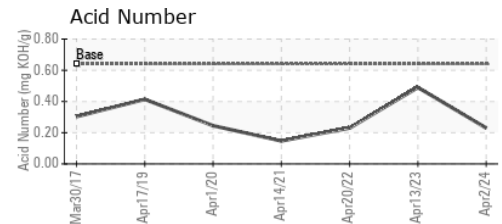
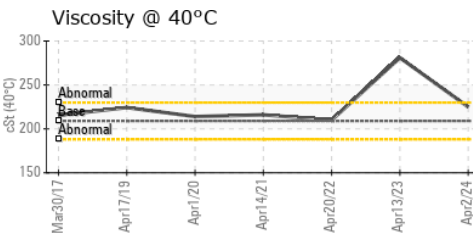
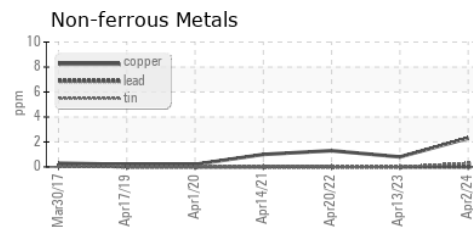
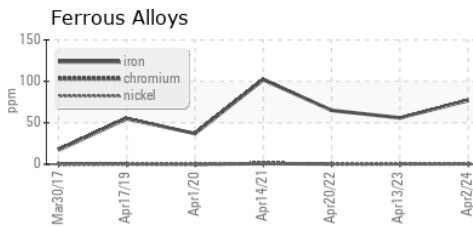
VISUAL	method	limit/base	current	history1	history2	
White Metal	scalar	*Visual	NONE	NONE	NONE	LIGHT
Yellow Metal	scalar	*Visual	NONE	NONE	NONE	NONE
Precipitate	scalar	*Visual	NONE	NONE	NONE	NONE
Silt	scalar	*Visual	NONE	NONE	NONE	NONE
Debris	scalar	*Visual	NONE	▲ MODER	LIGHT	VLITE
Sand/Dirt	scalar	*Visual	NONE	NONE	NONE	NONE
Appearance	scalar	*Visual	NORML	● HAZY	NORML	NORML
Odor	scalar	*Visual	NORML	NORML	NORML	NORML
Emulsified Water	scalar	*Visual	>0.2	▲ 0.2%	0.2%	NEG
Free Water	scalar	*Visual		NEG	NEG	NEG

FLUID PROPERTIES	method	limit/base	current	history1	history2
Visc @ 40°C	cSt	ASTM D445 209	225	▲ 281	210

SAMPLE IMAGES	method	limit/base	current	history1	history2
---------------	--------	------------	---------	----------	----------



GRAPHS



Certificate L2367

Laboratory : WearCheck USA - 501 Madison Ave., Cary, NC 27513
Sample No. : ST44620
Lab Number : **06143045**
Unique Number : 10967853
Test Package : IND 2 (Additional Tests: KF, PrtCount)

HYDRAULIC SUPPLY COMPANY
 326 SE 1ST ST
 BELLE GLADE, FL
 US 33430

Contact: ROBERT RETALEATO
 r.retaeato@hydraulic-supply.com; rsr@hydraulic-supply.com

To discuss this sample report, contact Customer Service at 1-800-237-1369.

* - Denotes test methods that are outside of the ISO 17025 scope of accreditation.

Statements of conformity to specifications are based on the simple acceptance decision rule (JCGM 106:2012)

T: (561)996-4431

F: (561)996-8531