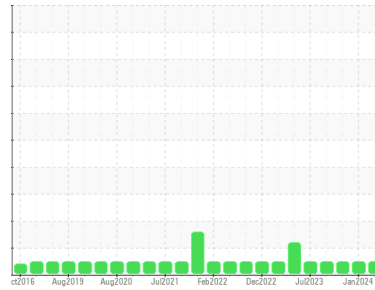




OIL ANALYSIS REPORT

Sample Rating Trend



NORMAL



Area

MELT SHOP - BAGHOUSE FANS

Machine Id

M/S BAGHOUSE FAN 151B B/S (S/N 15-6400-2000-1010)

Component

Outboard Journal Bearing

Fluid

AW HYDRAULIC OIL ISO 100 (3 LTR)

DIAGNOSIS

Recommendation

Resample at the next service interval to monitor.

Wear

All component wear rates are normal.

Contamination

The water content is negligible. There is no indication of any contamination in the oil.

Fluid Condition

The AN level is acceptable for this fluid. The condition of the oil is suitable for further service.

SAMPLE INFORMATION		method	limit/base	current	history1	history2
Sample Number	Client Info			RP0038011	RP0039314	RP0035336
Sample Date	Client Info			08 Apr 2024	16 Jan 2024	07 Dec 2023
Machine Age	hrs	Client Info		0	0	0
Oil Age	hrs	Client Info		0	0	0
Oil Changed	Client Info			N/A	N/A	N/A
Sample Status				NORMAL	NORMAL	NORMAL

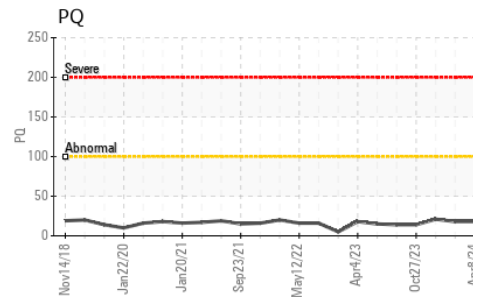
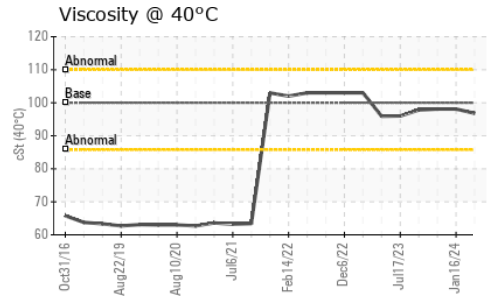
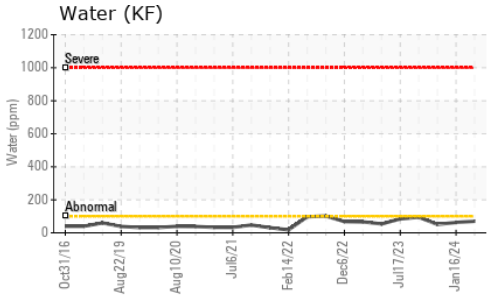
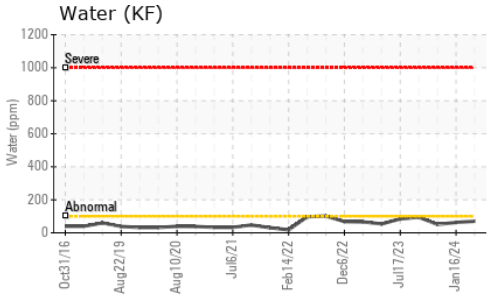
WEAR METALS		method	limit/base	current	history1	history2
PQ		ASTM D8184		18	18	21
Iron	ppm	ASTM D5185m	>60	44	59	51
Chromium	ppm	ASTM D5185m	>20	0	<1	0
Nickel	ppm	ASTM D5185m	>20	0	0	0
Titanium	ppm	ASTM D5185m		0	0	0
Silver	ppm	ASTM D5185m		0	0	0
Aluminum	ppm	ASTM D5185m	>4	2	2	1
Lead	ppm	ASTM D5185m	>250	0	0	0
Copper	ppm	ASTM D5185m	>125	0	<1	<1
Tin	ppm	ASTM D5185m	>80	<1	0	0
Vanadium	ppm	ASTM D5185m		0	0	0
Cadmium	ppm	ASTM D5185m		0	0	0

ADDITIVES		method	limit/base	current	history1	history2
Boron	ppm	ASTM D5185m	5	4	0	0
Barium	ppm	ASTM D5185m	5	0	3	0
Molybdenum	ppm	ASTM D5185m	5	189	155	156
Manganese	ppm	ASTM D5185m		2	1	<1
Magnesium	ppm	ASTM D5185m	25	4	4	6
Calcium	ppm	ASTM D5185m	200	<1	10	10
Phosphorus	ppm	ASTM D5185m	300	516	549	509
Zinc	ppm	ASTM D5185m	370	8	0	11

CONTAMINANTS		method	limit/base	current	history1	history2
Silicon	ppm	ASTM D5185m	>50	<1	2	2
Sodium	ppm	ASTM D5185m		3	0	2
Potassium	ppm	ASTM D5185m	>20	<1	1	2
Water	%	ASTM D6304	>2	0.007	0.006	0.005
ppm Water	ppm	ASTM D6304		70	63	51

FLUID DEGRADATION		method	limit/base	current	history1	history2
Acid Number (AN)	mg KOH/g	ASTM D8045	0.57	0.98	0.79	0.73

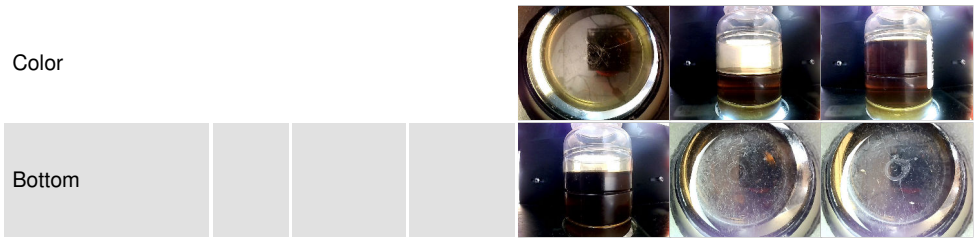
OIL ANALYSIS REPORT



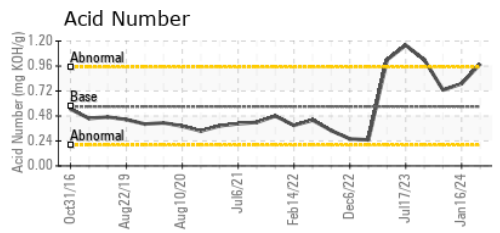
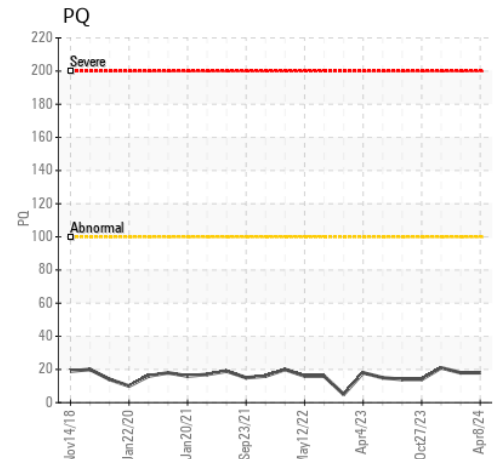
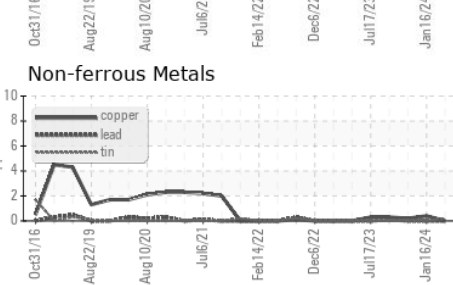
VISUAL	method	limit/base	current	history1	history2
White Metal	scalar	*Visual	NONE	NONE	NONE
Yellow Metal	scalar	*Visual	NONE	NONE	NONE
Precipitate	scalar	*Visual	NONE	NONE	NONE
Silt	scalar	*Visual	NONE	NONE	NONE
Debris	scalar	*Visual	NONE	NONE	NONE
Sand/Dirt	scalar	*Visual	NONE	NONE	NONE
Appearance	scalar	*Visual	NORML	NORML	NORML
Odor	scalar	*Visual	NORML	NORML	NORML
Emulsified Water	scalar	*Visual	>2	NEG	NEG
Free Water	scalar	*Visual		NEG	NEG

FLUID PROPERTIES	method	limit/base	current	history1	history2
Visc @ 40°C	cSt	ASTM D445	100	96.8	98.1

SAMPLE IMAGES	method	limit/base	current	history1	history2
---------------	--------	------------	---------	----------	----------



GRAPHS



Laboratory : WearCheck USA - 501 Madison Ave., Cary, NC 27513
Sample No. : RP0038011 **Received** : 09 Apr 2024
Lab Number : 06143139 **Tested** : 10 Apr 2024
Unique Number : 10967947 **Diagnosed** : 11 Apr 2024 - Angela Borella
Test Package : IND 2 (Additional Tests: PQ)

OUTOKUMPU STAINLESS USA
 HWY 43 N
 CALVERT, AL
 US 36513
 Contact: MARIO JOHNSON
 Mario.johnson@outokumpu.com
 T: (251)321-4105
 F: x:

To discuss this sample report, contact Customer Service at 1-800-237-1369.
 * - Denotes test methods that are outside of the ISO 17025 scope of accreditation.
 Statements of conformity to specifications are based on the simple acceptance decision rule (JCGM 106:2012)